

# PINEHURST PRESERVES

Embracing 40,000 Acres and Offering  
**VARIED ATTRACTIONS FOR SPORTSMEN AND SPORTSWOMEN**

The climate is unsurpassed, cover excellent, and easy to traverse. Here one may enjoy

### Sport without "Roughing-it"

New England comforts in Southern territory—a rare combination.

### GOOD QUAIL AND DOVE SHOOTING

A few turkeys for those who care to hunt them, woodcock, fox and rabbit hunting.

In connection with the Preserves are maintained

### KENNELS

among the most complete in the country, at which a string of perfectly broken setters and pointers are kept for the use of the guests

Reliable guides, saddle horses, shooting wagons, automobiles, and, in fact, every requirement for long or short trips. Dogs boarded and looked after with intelligent care.

### TERMS

Guides \$3 per day, without dogs; \$4 per day with dogs; these charges including shooting privilege. Those shooting without guide are charged \$1 per day for the privilege of hunting on the Preserves.

For further information address  
**PINEHURST GENERAL OFFICE**

### "Queen of Sea Routes"

## Merchants & Miners Trans. Co.

Steamship Lines  
BETWEEN

**Boston, Providence and Norfolk**

Most Delightful Route Between

## ALL NEW ENGLAND POINTS AND PINEHURST

Florida Service between Boston, Providence, Philadelphia, Baltimore and Jacksonville

Fine Steamers Low Fares Best Service  
AUTOMOBILES CARRIED

Marconi Wireless Telegraph  
Send For Booklet

E. C. LOHR, Agt., Norfolk, Va.  
C. H. MAYNARD, Agt., Boston, Mass.  
JAMES BARRY, Agt., Providence, R. I.  
W. P. TURNER, G. P. A., Baltimore, Md.

"Finest Coastwise Trips in the World"

## Pinehurst Farms Dairy and Market Garden

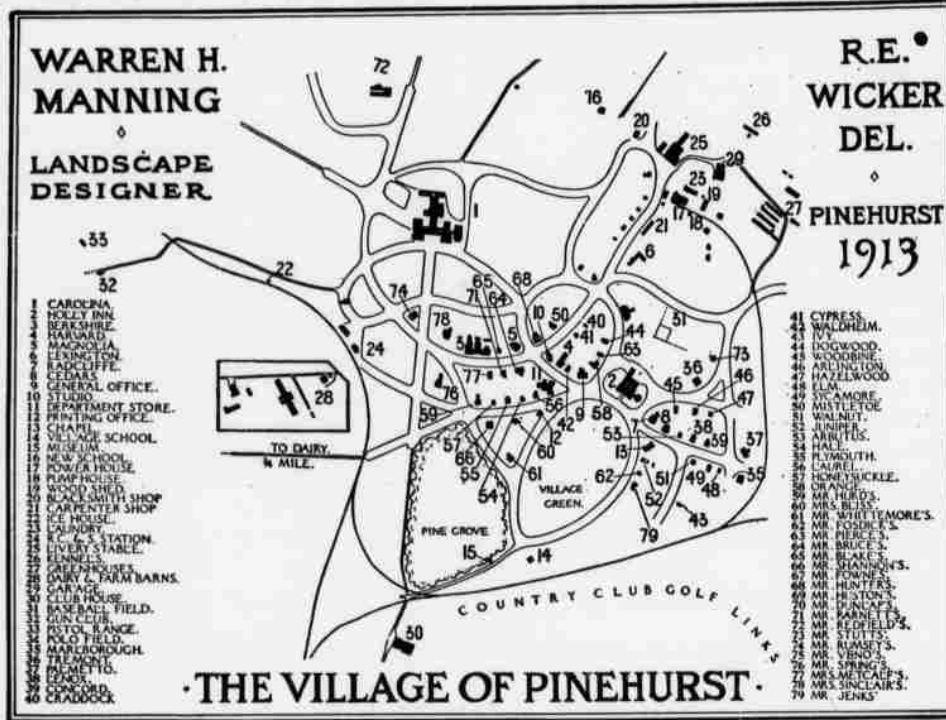
Supplying the Entire Village in their Respective Departments.

Village Guests are Cordially Invited to Visit These Modern Plants.

Address Correspondence to  
**PINEHURST GENERAL OFFICE**

DR. RICHARD T. TAYLOR  
**DENTIST**  
The Harvard  
CONSULTATION HOURS: 12 TO 1

# The Village of Pinehurst



## Unique in the Southland

**P**INEHURST is, to be brief, the most complete and perfectly equipped Fall, Winter and Spring Resort in the world; an Ideal Village created by the late James W. Tufts. Possessing exceptional opportunities for outdoor life, it also offers right conditions for living in every sense of the words; its unsurpassed location in the far famed long-leaf pine thermal belt or Sand Hill region, responsible for a winter climate generally acknowledged to possess few equals in the rare purity of its air, and the subtle tonic of its sunshine.

As the winter Golf centre of the two hemispheres, Pinehurst is now thoroughly established, its unequalled equipment embracing three distinct six-thousand-yard eighteen-hole courses and an additional nine-hole course. Perfectly maintained and laid out in accordance with modern standards, they rank with the world-famous courses, and the special holes are "quoted" wherever the game is known. Here are held annually four contests of international importance beginning with the Midwinter tournament in January, and concluding with the United North and South Amateur Championship in April. A fireproof locker room, shower baths and observation and lunch rooms, add to the attractions of the conveniently located Country Club house.

Closely seconding Golf in importance, are Trap Shooting and Tennis, the annual Mid-winter Handicap and Tennis Championship held annually in January, classic events which attract the country's best, a significant indication of the excellence of the superb equipment for these sports. As the Hub of Southern good roads, the Village offers special attractions to motorists and those who ride and drive; the Livery is of the best and the Garage the largest in the state. Auto service runs between the Country Club, Station and various points in the Village.

Forty thousand acres are maintained as Shooting Preserves for Village guests with good quail and dove shooting and an occasional turkey or woodcock. In connection are Kennels of high excellence and equipment necessary to meet the demands of the most exacting sportsmen. Rifle and pistol shooting, polo, fox hunting, equestrian sports, baseball, billiards and pool, are among the attractions which combine happily with social pleasures. The hotel orchestras are of high standard and dancing is enjoyed by the entire colony.

The Hotels, four in number, include The Carolina, the largest in the state and one of the best appointed in the south, which with its new seventy-room addition, provides for over five hundred guests in accordance with the high standard of modern requirements. The Holly Inn, accommodating two hundred guests, enjoys general popularity, while The Berkshire and Harvard, caring for one hundred guests each, are suited to those desiring a more moderate rate. The Pine Crest Inn and Lexington are the smaller houses. In addition to twenty attractive family cottages, well furnished and provided with modern conveniences, are a rapidly increasing number of private homes; evidence of the permanent place the Village holds in the affections of its admirers.

Various utility plants, a Dairy, Creamery and Market Garden, models of excellence and the only plants maintained on the same large scale for a similar purpose, play an important part in supplying the needs of the Village in the way of milk, cream and vegetables. There are also a department store, pharmacy, meat market, jewelry store, novelty shop, photographic studio, chapel, schools, library, central power plant furnishing electric light and steam heat, laundry, refrigerating plant, general office, post, telegraph and telephone offices, railway station, resident physician, resident minister, abundant pure water supply, and sanitary sewerage system. In fact, the Village supplies every modern need offering unequalled and diversified attractions for people of refinement at a wide range of price. CONSUMPTIVES ARE EXCLUDED.

Pinehurst is seventeen hours from New York and through Pullmans run throughout the season direct to the Village over the Seaboard Air Line Railroad. The western service is excellent. Stopover privileges are granted to tourists going either north or south.

For illustrated general booklet, information or reservations, address:

**PINEHURST GENERAL OFFICE, PINEHURST, N. C.,**  
Or LEONARD TUFTS Owner, BOSTON, MASS.

# PINEHURST SCHOOL

College Preparatory  
Grammar and Intermediate  
and Primary Departments  
FOR BOYS AND GIRLS

THE scheme of work is individual, the aim being to enable pupils to continue in the same studies which they have been pursuing in their own home schools. If they bring the books they have used and a plan from their teachers of the ground to be covered during their absence, they will be so instructed that they may rejoin their classes without loss, after a long or short stay in an ideal climate, surrounded by right conditions for healthy outdoor life. Pupils may enter at any time and for any length of time.

### TERMS

Primary: season, \$75.00; week, \$4.00.  
Intermediate and Grammar: season, \$125.00; week, \$7.00.  
College Preparatory: season, \$200.00; week, \$12.00.

### SPECIAL FEATURES

Private tutoring at reasonable rates.  
Music lessons may be obtained from skilled musicians of the Hotel Orchestras.

Mr. Lightbourn, the master in charge, may be consulted as follows:

At The Carolina, Monday, Wednesday, and Friday evenings.

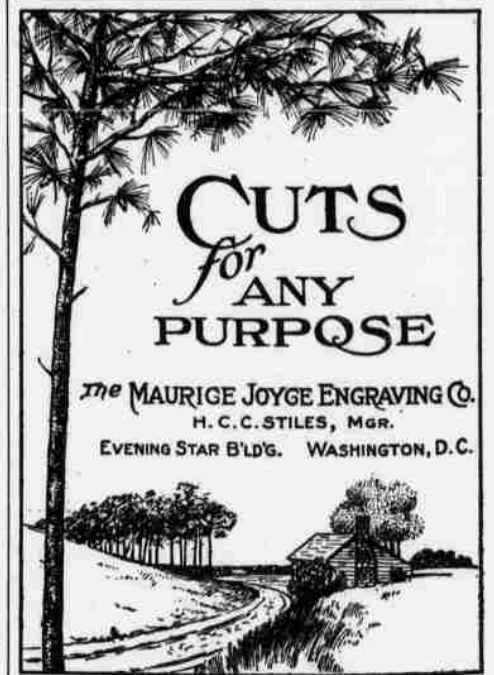
At The Holly Inn, Monday, Tuesday, and Thursday evenings.

At The Berkshire, Tuesday and Thursday evenings.

At other times by appointment.

For information address

**PHILIP L. LIGHTBOURN or**  
**PINEHURST GENERAL OFFICE**



**Batchelder & Snyder Company**  
Packers, Poultry Dressers, Butter Makers  
7, 49, 51, 53, 55, 57, 61, 63 Blackstone Street  
62, 64, 66, 68, 70, 72, 74, 76 North St.  
BOSTON, MASS.

## PINEHURST STEAM LAUNDRY

First Class Work in all  
Departments

Done with Neatness and Dispatch

MYRON W. MARR, M. D.  
**RESIDENT PHYSICIAN FOR PINEHURST**  
Office at The Carolina  
Hours: 10 to 11 A. M., or by appointment.