

ALMOST BUT NOT QUITE!*(Concluded from page five)*

R. Davidson, 2 and 1; J. L. Weller beat W. L. Milliken, 3 and 1; C. S. McDonald beat T. C. Vogel, 2 and 1; C. H. Lay beat J. D. C. Rumsey, 4 and 3; G. F. Brown beat G. C. Code, 8 and 7.

SECOND ROUND—Howard beat Brennan, 5 and 4; McSweeney beat Kelley, by default; McDonald beat Weller, 1 up (21 holes); Brown beat Lay, 5 and 4.

SEMI-FINAL—McSweeney beat Howard, 1 up (19 holes); McDonald beat Brown, 1 up.

FINAL—McDonald beat McSweeney, 2 and 1.

CONSOLATION

FIRST ROUND—Maxwell beat Hayward, 5 and 4; Stratton beat Davidson, by default; Vogel beat Milliken, 3 and 1; Rumsey beat Code, 4 and 2.

SEMI-FINAL—Maxwell beat Stratton, 1 up (19 holes); Vogel beat Rumsey, 1 up.

FINAL—Maxwell beat Vogel, 2 up.

FIFTH DIVISION—CAPTAIN'S TROPHY

FIRST ROUND—F. G. Morse beat W. W. Shedden, 4 and 3; F. P. Lee beat J. B. McMurrich, 4 and 3; H. B. Smithers beat M. B. Johnson, by default; E. E. Franks beat I. B. Roberts, 2 and 1; Philip Barnum beat W. G. Fisher, 2 up; N. D. Clark beat J. D. Arnold, 3 and 2; H. W. Smith beat E. B. Pratt 7 and 6.

SECOND ROUND—Lee beat Morse, 1 up (20 holes); Franks beat Smithers, 8 and 7; Clark beat Barnum, by default; Derrick beat Smith, 3 and 2.

SEMI-FINAL—Lee beat Franks, 1 up (19 holes); Derrick beat Clark, by default.

FINAL—Lee beat Derrick, 1 up (21 holes).

CONSOLATION

FIRST ROUND—Shedden beat McMurrich, 4 and 3; Roberts beat Johnson, by default; Arnold beat Fisher, 3 and 1; Blancke beat Pratt, 4 and 3.

SEMI-FINAL—Shedden beat Roberts, 6 and 4; Arnold beat Blancke, 3 and 2.

FINAL—Shedden beat Arnold, 5 and 4.

THE CAROLINA

PINEHURST'S PREMIERE HOTEL

Season: November 20 to April 10



THE NEW ADDITION CONTAINS SIXTY-TWO BED ROOMS, EACH WITH PRIVATE BATH, AND SIXTEEN SLEEPING PORCHES

Every modern comfort and convenience, including elevator, telephone in every room, sun rooms, steam heat night and day, electric lights, pure water, and a perfect sanitary system of sewerage and plumbing.

The interior is a model of elegance, with appointments calculated to suit the most luxurious tastes.

The cuisine and table service are unsurpassed. Music hall and excellent orchestra. Capacity 500.

H. W. PRIEST, Manager, Pinehurst, N. C.



GARDINER WHITE—PHILIP CARTER

FOURTH DIVISION—TREASURER'S TROPHY

FIRST ROUND—C. W. Middleton beat A. Byron Alley, 1 up; J. G. Nicholson beat H. J. Kelley, 5 and 4; Alfred Lucking beat L. R. Porteous, 6 and 4; J. M. Scott beat J. T. Newton, 3 and 2; F. A. Potts beat C. S. Stephenson, 7 and 5; F. C. Goodwin beat J. R. Towle, 6 and 4; G. T. Dunlap beat E. E. White, 2 up; H. G. Streat beat H. H. Rackham, 3 and 2.

SECOND ROUND—Nicholson beat Middleton, 1 up; Scott beat Lucking, 2 and 1; Potts beat Goodwin, 3 and 1; Streat beat Dunlap, 5 and 4.

SEMI-FINAL—Scott beat Nicholson, 3 and 2; Potts beat Streat, 7 and 6.

FINAL—Scott beat Potts, by default.

CONSOLATION

FIRST ROUND—Kelly beat Alley, 4 and 3; Porteous beat Newton, 2 up; Towle beat Stephenson, 5 and 4; White beat Rackham, 4 and 2.

SEMI-FINAL—Kelley beat Porteous, 3 and 1; Towle beat White, 6 and 4.

FINAL—Kelley beat Towle, 1 up.

SIXTH DIVISION—CLUB TROPHY

FIRST ROUND—H. C. Morse beat I. H. Ingersoll, 1 up; R. R. Scott beat W. L. O'Connor, 1 up (19 holes); W. H. Weller beat H. S. Houston, 4 and 2; S. F. Scattergood beat J. F. Fanning, 2 up; J. H. Johnson beat H. T. McClearn, Jr., 9 and 8; J. V. Beekman beat F. T. Ellison, 5 and 4; George Motley beat R. A. Swigert, by default; Michael Sullivan beat J. J. Evans, 1 up (19 holes).

SECOND ROUND—Scott beat Morse, by default; Scattergood beat Weller, 1 up; Johnson beat Beekman, 1 up; Motley beat Sullivan, 7 and 6.

SEMI-FINAL—Scattergood beat Scott, 4 and 2; Johnson beat Motley, 1 up (19 holes).

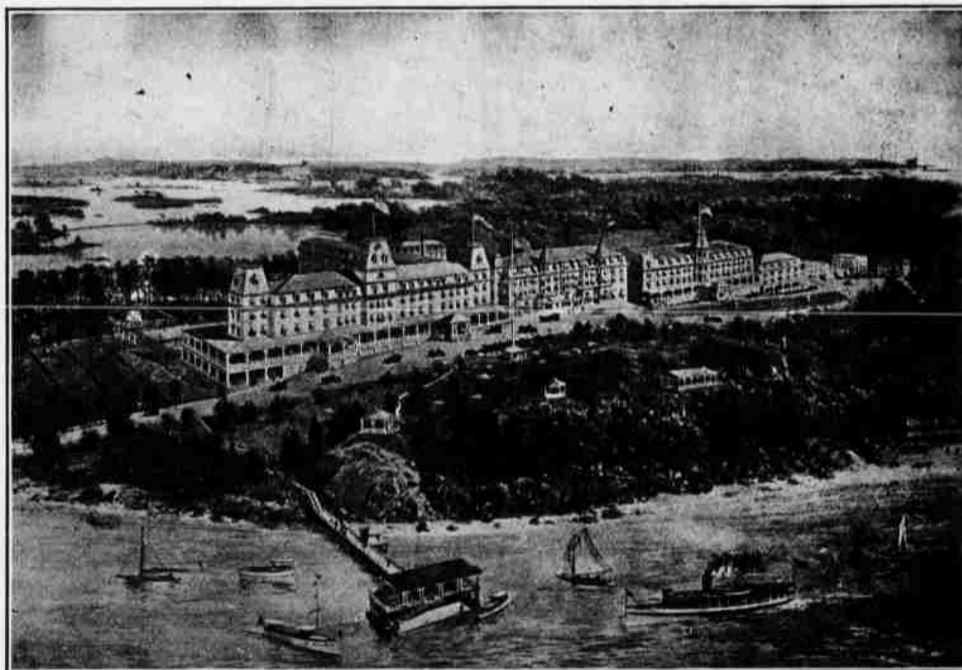
FINAL—Johnson beat Scattergood, by default.

CONSOLATION

FIRST ROUND—Ingersoll beat O'Connor, 2 and 1; Fanning beat Houston, by default; Ellison beat McClearn, Jr., 6 and 5; Evans beat Swigert, by default.

SEMI-FINAL—Fanning beat Ingersoll, 3 and 1; Evans beat Ellison, 1 up (19 holes).

FINAL—Fanning beat Evans, 3 and 1.

**HOTEL WENTWORTH**

NEW CASTLE PORTSMOUTH N. H.

The Leading New England Coast Summer Resort.

Every facility for sport and recreation: Golf, tennis, riding, driving, yachting, fishing, bathing and well equipped garage under competent supervision. Fine livery. Music by symphony players. Accommodates 500. Local and long distance telephone in every room.

Send today for illustrated booklet.

WENTWORTH HOTEL CO., H. W. Priest, Manager

Address Until May 1, The Carolina, Pinehurst, N. C.

BRETTON WOODS

IN THE HEART OF THE WHITE MOUNTAINS OF NEW HAMPSHIRE

Improved Golf Course Full 6,450 yards

THE MOUNT PLEASANT
Ralph J. HERKIMER

THE MOUNT WASHINGTON
D. J. TRUDEAU

Winter: Hotel Ormond
ORMOND BEACH, FLA.

Information at 243 Fifth Ave., New York, and all of Mr. Foster's offices

22-BRETTON WOODS SADDLE AND DRIVING HORSES AT ORMOND THIS WINTER