

**THE SUIT CASE GUN CLUB****Du Pont Hand Trap Reduces Trap Shooting to Simplicity**

The reduction of Gun Club equipment to dress suit case capacity in the form of the Du Pont hand trap, is just the impetuous trap shooting has needed to make enjoyment of the "sport alluring" general. Briefly this little machine brings the sport always within your reach where before the time required to go to and from it often corresponded exactly with the time at your disposal. Further this new device introduces the individual element with its never ceasing fascination in any and all conceivable combinations, and it comes as near to actual brush shooting conditions as it is possible to bring an artificial target. The rising flight of the woodcock, the swift get-away of the quail, the ripping quarter of the grouse, the down-the-wind cross-cut of the duck, or the flashing overhead of the pigeon, not to mention upside-down twisters and incomers. ¶ Your "Gun Club" is, indeed, now a part of your outfit, and all outdoors is opportunity!

**The Samoan Island Group**

The part played by the German islands of the Samoan group, in the international relations of the Orient is told in a statement prepared by the National Geographic Society: ¶ "The islands of the Samoan group, acquired some years ago by Germany, occupy a position in the South Seas which would make their permanent loss a serious blow to the Germans. These islands lie in the direct line of mail steamers between American ports, Hawaii and Australasia. Upolu and Savaii are the German islands, while Tutuila, and its adjacent small splotches of green are possessions of the United States. The German possessions have been, temporarily, at least, wrested from her. The soils of this island group are luxuriantly fertile, and copra—dried coconut—is produced here in large quantities. Tropical fruits, yams, arrowroot and other agricultural products are brought forth in abundance. ¶ "It is, however, as a strategic port of call, an advanced harbor in the Orient, that Germany set her highest value upon these South Sea possessions. For a time the Samoan Islands were under the control of

**THE CAROLINA**

PINEHURST'S PREMIERE HOTEL

Season: November 20 to April 14



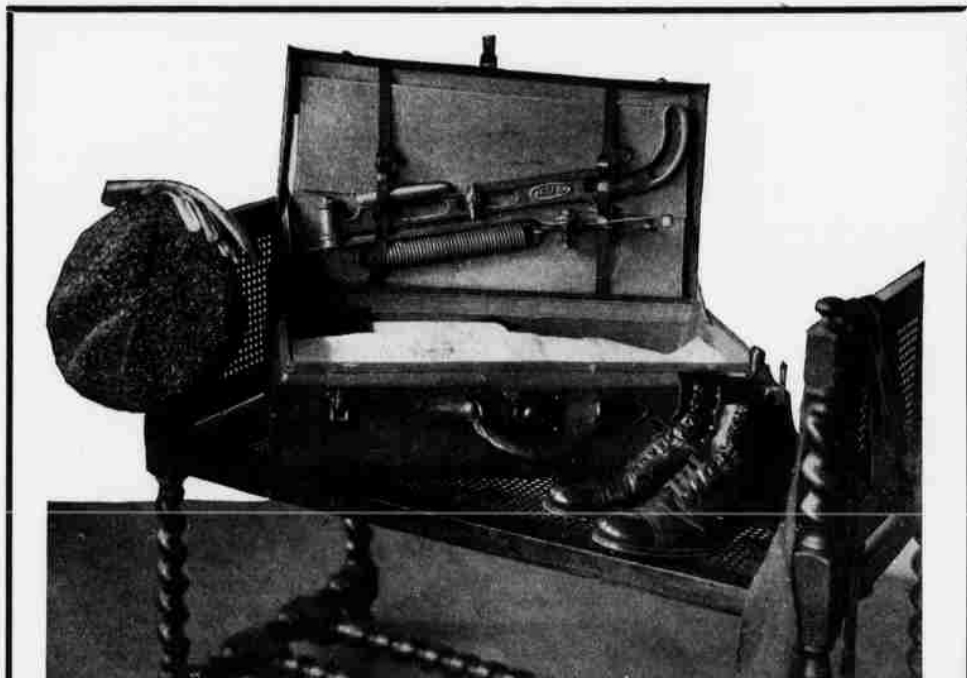
THE NEW ADDITION CONTAINS SIXTY-TWO BED ROOMS, EACH WITH PRIVATE BATH, AND SIXTEEN SLEEPING PORCHES

Every modern comfort and convenience, including elevator, telephone in every room, sun rooms, steam heat night and day, electric lights, pure water, and a perfect sanitary system of sewerage and plumbing.

The interior is a model of elegance, with appointments calculated to suit the most luxurious tastes.

The cuisine and table service are unsurpassed. Music hall and excellent orchestra. Capacity 500.

H. W. PRIEST, Manager, Pinehurst, N. C.



THE SUIT CASE GUN CLUB

"Just the impetuous trap shooting has needed to make enjoyment of the 'sport alluring' general"

**SEVENTY-FOUR IS GOOD****Mrs. H. R. Stockton's Card Best in Selected Score Competition**

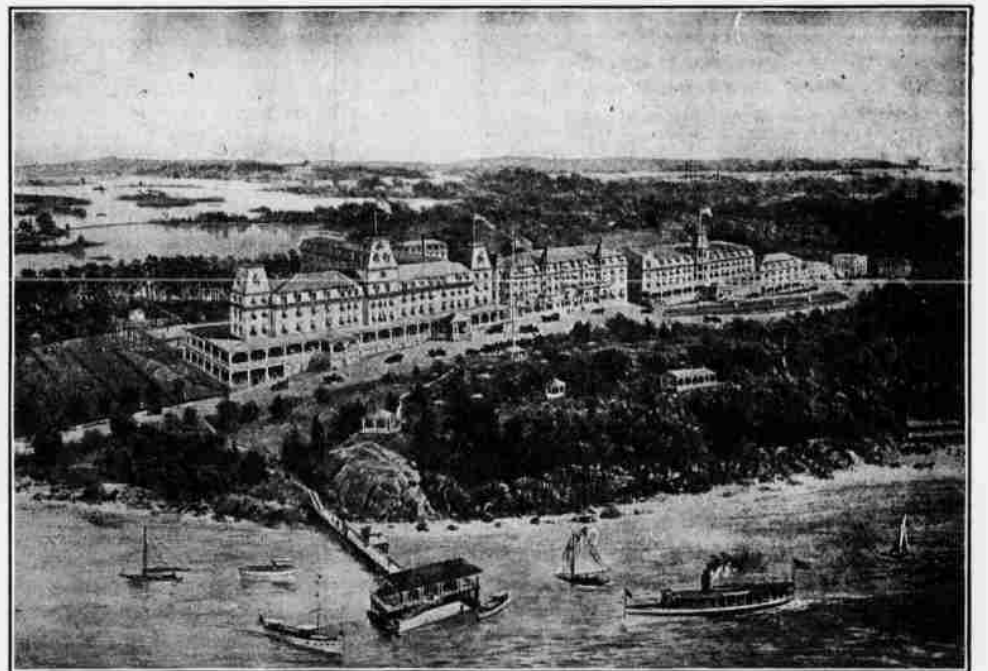
Mrs. H. R. Stockton and Mrs. J. V. Hurd divide honors in the all-season selected score competition of the Silver Foils with cards of 74 and 75:

|      |                         |
|------|-------------------------|
|      | MRS. STOCKTON           |
| OUT— | 4 5 4 4 5 4 3 4 4—37    |
| IN — | 5 3 3 4 5 4 5 3 5—37—74 |
|      | MRS. HURD               |
| OUT— | 4 4 5 5 5 3 3 4 4—37    |
| IN — | 4 3 4 4 5 4 6 3 5—38—75 |

**Piazza Luncheon at The Rose**

Happily in keeping with Spring days was a piazza luncheon tendered by Mrs. George F. Blake at The Rose on Tuesday for the dancing class of which she is a member. The guests were Miss Foster and Miss Blanche Foster, Miss Holmgren, Miss Moore and Miss Ross and Mesdames McDonald, Langdon, Dow, Ormsbee, Ellison and Houston.

the British government and German consuls. The control of the islands which existed before the war was affected by a treaty made in 1899. The total area of of group is about 1750 square miles of which the German share is 1610 square miles. There are eight inhabited islands in the group, with a total population of 37,000 of which 33,478 live within the confines of the German islands. These figures include only the native population. The number of European settlers is negligible. ¶ "The climate of Samoa is found by some to border upon perfection as far as climates go, and by others it is dismissed with a vague notation that it is supportable. Perhaps the delightful descriptions by Robert Louis Stevenson, who, on account of lung trouble, took up his permanent residence there in 1866, and who lived and worked eight years after the doctors had given him up, can best be trusted among all others. Germany found it difficult to persuade her sons to settle in the group."

**HOTEL WENTWORTH**

NEW CASTLE PORTSMOUTH N. H.

The Leading New England Coast Summer Resort.

Every facility for sport and recreation: Golf, tennis, riding, driving, yachting, fishing, bathing and well equipped garage under competent supervision. Fine livery. Music by symphony players. Accommodates 500. Local and long distance telephone in every room.

Send today for illustrated booklet.

WENTWORTH HOTEL CO., H. W. Priest, Manager

Address Until May 1, The Carolina, Pinehurst, N. C.

**THE COLUMBUS**

BETHLEHEM

WHITE MOUNTAINS, N. H.

An attractive hotel with several bath suites, adjoining the Country Club and centrally located. Accommodates 80.

JUNE TO OCTOBER

H. A. LEWIS, Owner

Address EDWARD FITZGERALD, Mgr. The Lexington, PINEHURST, N. C.