

THE PINEHURST OUTLOOK

VOL. XIX, NO. 3

SATURDAY MORNING, DECEMBER 18, 1915

FIVE CENTS

WINTER GOLF LEAGUE

Fraternity of Advertisers and Plan of Week of Golf and Vacation

Which Includes One of the Most
Remarkable Programs Ever Seen
On the Country Club Links



WE ARE in receipt of a letter from our good friend Mr. William C. Freeman which leads us to believe that the advertising men in this country are not only prosperous, but full of the joy of living and capable of the utmost appreciation of the royal game of Golf.

Time out of mind this genial company has brought a week of diversion and interest to the village, and determined for themselves the driving and putting capacity of every member thereof. This year they plan to break the record, as the letter and program shows.

Mr. Freeman says:

"I enclose copy of program for the advertising tournament at Pinehurst, January 10-15, 1916, inclusive.

Pinehurst has never had such a tournament as this one since it became a golf mecca. It is all medal play and instead of there only being one champion representing the advertising interests, there will be three champions each representing a

different class.

Sixty-two prizes in all will be distributed. The events as scheduled will permit of a more general distribution of prizes than in any previous tournament held by the Association.

W. C. Freeman."

MONDAY, JANUARY 10

18-hole medal round for men.

9-hole medal round for women.

Class "A" men, with handicap of 10 or less, will play on No. 3 course, first pair starting at 9 o'clock—other pairs to follow at intervals of five minutes.

Class "B" men, with handicaps from 11 to 20 inclusive, will play on No. 2 course, first pair starting at 9 o'clock—other pairs to follow at intervals of five minutes.

Class "C" men, with handicaps from 21 upwards, will play on No. 1 course, first pair starting at 9 o'clock—other pairs to follow at intervals of five minutes.

Women will play on No. 3 course, first pair starting at 10.30—other pairs to follow at intervals of five minutes.

PRIZES:—Best Gross and Best Net, in each class, men and women—8 prizes in all.

TUESDAY, JANUARY 11

18-hole medal round for men.

9-hole medal round for women.

Same starting time in all classes, men and women, as on Monday.

Class "A" men will play on No. 2 course, Class "B" men will play on No. 1 course, Class "C" men will play on No. 3 course.

Women will play on No. 2 course.

PRIZES—Best Gross and Best Net, in each class, men and women—8 prizes in all.

NOTE—Those winning prizes on Monday are not eligible to win a prize on Tuesday.

WEDNESDAY, JANUARY 12

18-hole medal round for men.

9-hole medal round for women.

Same starting time in all classes, men and women, as on Tuesday.

Class "A" men will play on No. 1 course, Class "B" men will play on No. 3 course, Class "C" men will play on No. 2 course.

Women will play on No. 1 course.

PRIZES—Best Gross and Best Net in each class, men and women—8 prizes in all.

NOTE—Those winning prizes on Monday and Tuesday are not eligible to win a prize on Wednesday.

THURSDAY, JANUARY 13

18-hole medal round for men.

9-hole medal round for women.

Same starting time in all classes, men and women, as on Monday.

All classes, men and women, will play over the same course as they played on Monday.

PRIZES—Best Gross and Best Net in each class, men and women—8 prizes in all.

NOTE—Those winning prizes on Monday, Tuesday and Wednesday are not eligible to win a prize on Thursday.

32 prizes in all will have been won up to Thursday night, by 32 separate individuals, which means that a prize will go to one out of every three or four players, depending upon the total number taking part in the tournament.

In addition eight prizes will be distributed as follows:

(Continued on page three)

PARSON AND ABBE WIN

Tin Whistles Medal Play Results In Tie

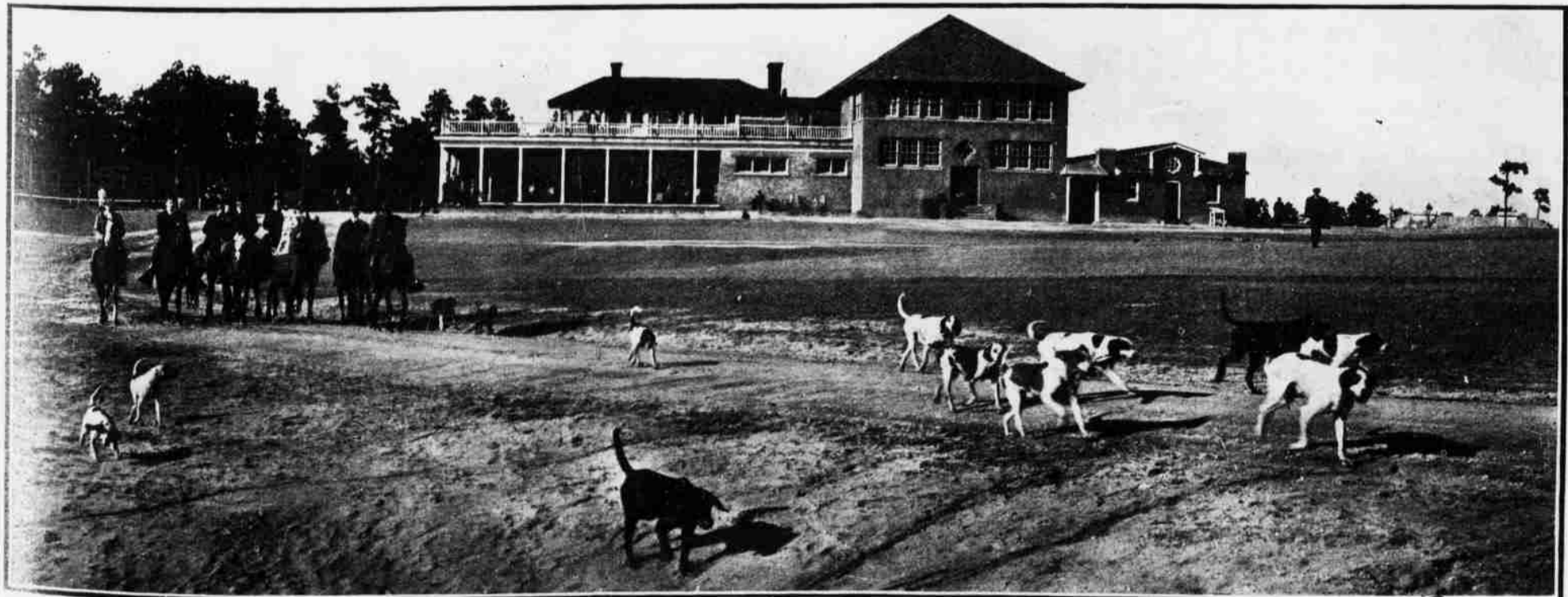
Kelly of Southern Pines Loses
After Game Fight for
First Honors



THE Tin Whistles Club Tournament medal play for trophies donated by Mr. E. H. Behrend and Mr. C. Z. Eddy, played on number one course Monday, December 13th, resulted in the closest possible contest between Donald Parson of Youngstown and Tom Kelly, the Southern Pines champion. They both brought in a net score of 75, Parson playing with a handicap of 11 and Kelly playing with a handicap of eleven and Kelly with ten. T. A. Kelly surely plays in hard luck. Last week he was within an ace of the coveted prize in the medal play best selected twelve holes. He lost the tie for second honors with R. H. Hunt of Worcester in that case. And now here he comes in with one of the best two cards of the day, and loses sight of the prize on the toss up. C. E. Becker of woodland was a close second in 76.

F. C. Abbe, who donated the prizes to the club last week, came in for one himself, heading the list of Class B with 76, the low net score of the day, defeating

(Continued on page two)



ON THE TRAIL OF THE BIG GREY FOX