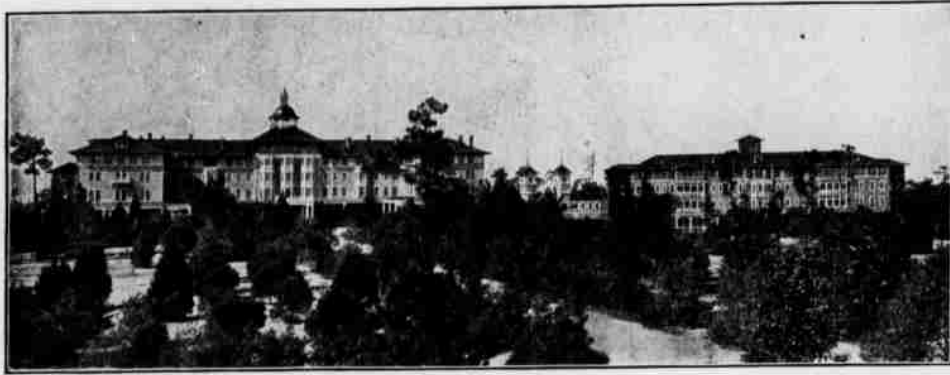


THE CAROLINA



The Largest and Best Appointed Hotel in the Carolinas
Private baths, telephones in all rooms, elevators, sleeping porches,
every possible convenience.

Open November 10th to Middle of April

H. W. PRIEST, Manager

Pinehurst N. C.

THE HOLLY INN



SEASON: JANUARY TO APRIL 30

The Holly Inn is one of the most comfortable, attractive and popular hotels in the South, caring for, with its annexes, 200 guests. The lobby has been enlarged since last season, contributing greatly to the comfort of the guests.

F. C. ABBE, Manager, Pinehurst, N. C.

The Berkshire



The Berkshire is a modern hotel, delightfully located, with all conveniences for health and comfort; bath rooms, steam heat, open fires, electric lights and sanitary plumbing.

J. M. ROBINSON, Manager.

PINEHURST, N. C.

✻ Pine Bluff ✻

The Highland House Tea Room

is located on New England Avenue and the Capital Highway, in the cottage adjacent to the main house.

CAPE COD WINDMILL

A serviceable model of the old Cape Cod windmills for a weather vane—mill eight inches high, about 15 inches long—made on Cape Cod.

\$1.25, transportation paid east of the Mississippi
Further West, \$1.50

CAPE COD PRODUCTS CO.
North Truro, Cape Cod, Mass.

The Mark
of
Excellence



The Candy
of
Excellence

Boston's Famous Candy

PAGE & SHAW

Packed in Boxes

A.T.

ONE DOLLAR PER POUND

Sold in All
Principal Cities
and at Our
Retail Stores

BOSTON, MASS.9 WEST STREET
LYNN, MASS.50 CENTRAL SQUARE
SALEM, MASS.254 ESSEX STREET
NEW YORK, N. Y. { ...362 FIFTH AVENUE
 ...553 FIFTH AVENUE
 71 BROADWAY
 ...BILTMORE HOTEL
 .VANDERBILT HOTEL
PHILADELPHIA, PA.
 1228 CHESTNUT STREET
CHICAGO, ILL. { 120 SO. MICHIGAN AVENUE
 8 LA SALLE STREET

Health Inspector Johnson, of Cambridge, Mass., says: "The Page & Shaw candy manufacturing plant, Ames Street, Cambridge, is one of the finest plants for sanitary conditions and purity of output that I have ever seen."

ON SALE AT THE CAROLINA
AND COUNTRY CLUB