

tice of electrical utility. It will be the post graduate in everything in which electricity and electrical energy pertains. It will be so modern and complete that we cannot foretell what it will be, for it will introduce a lot of things that are not invented yet. That new town will be an experimental laboratory for electrical research and test. It will be a mecca for electrical men from all over the world.

The Yadkin River is picturesque throughout its entire distance from the mountains to the sea. It is significant of big things, of things of the first magnitude, and I am of the opinion that over in the Yadkin Valley is destined in a short time to be a remarkably lively industrial community, reaching from up about Salisbury on the Southern Railroad down to Rockingham on the Seaboard Air Line. In that distance there are many opportunities for water power development of big power, from twenty-five thousand horse power up to more than that, and power of such vastness indicates a future.

#### THE BIGGEST DAM IN THE WORLD

The work going on over on the Yadkin is prophetic of what is ahead for North Carolina. This State is making surprising progress in manufacturing. Last Summer the North Carolina Department of Labor reported an increase in manufactured products of from about eighty million dollars fourteen years ago to two hundred and forty-five million dollars last year. The cotton manufacturing a year ago exceeded in value all the products of all the factories in the State fourteen years ago. The rate of increase is one of the most pronounced factors in the industrial advancement of the United States.

From 1900 to 1913 the cotton mills of the State multiplied at this same phenomenal rate. The power used in the cotton mills increased in that period from fifty-three thousand horse power to almost a hundred and forty thousand horse power, and the power used in other manufacturing industries increased in the same proportion. Another thing that is astonishing is the diversification of factory product. A wide variety of things is made now in the State by shops and factories that are daily increasing in size and volume of product. The electric wires of the power plants gridiron North Carolina more completely than is the case any other place on the globe, and they represent more electrical power more widely and completely distributed to all the towns and communities than can be found any place else. This big affair on the Yadkin is of such a nature, and is located on a stream of such character that the development of power in quantity can be duplicated in several places. The real limit of the power of the Yadkin cannot be told until the whole stream has been carefully measured from mouth to the mountains and a careful and accurate estimate made of the fall, rainfall and the area of the watershed in all sections of the valley. It is known that the Yadkin would supply sufficient energy to turn all the wheels in any one of a large number of States. That is how that one valley rates among the industrial possibilities of the world, and what the development over at the Narrows is forecasting at the present.

Naturally the vast amount of power that is coming into reach in the Yadkin Valley encourages the people to look forward to nearly every conceivable thing that power stands for. A number of towns are already prospering with their adjacent cotton mills and the thrifty farms that surround the factory towns and find at the towns a convenient market for their cotton and other products.

#### PASSING PINEHURST

In the older towns is all the newness that comes from the genesis of progress. New life has outlasted the old indifference in all of them, and in each particular community the bustle and activity are in strange contrast with the old village quiet. From Pinehurst westward to the Yadkin is a continuation of development. The first community of consequence out of Pinehurst is West End. There has sprung up a village among the farms that are making, and apparently a considerable center of farm making has commenced. Northward from West End goes the extension which takes in Eagle Springs, Samarcand, Candor, and the new life along the main line of the Norfolk Southern road, which has within a year or so opened the country all the way across the Yadkin to Charlotte. Or, proceeding westward from West End, which is not west of very much, the Jackson Springs country is encountered, and after it the new development out through Montgomery County directly toward the river. The railroad will carry passengers over to the river from Pinehurst. Or, the man who likes to travel in his own vehicle, may take his car out over most of the territory between Pinehurst and the Yadkin by making inquiry as to the condition of the roads. Many miles of good roads have been built out that way in the last two or three years, so that almost any place is accessible, except at certain rainy periods, and even by this time the uncertain spots may be in good repair, as the work of road building is progressing all the time. Montgomery County is different from Moore. The Piedmont commences with Montgomery. The hills begin to rise higher, and rocks to take the place of sand. Montgomery is not so typically of the South as Moore. Montgomery County has long had a reputation for yellow legged spring pullets. There is a legend current in the hungry belt of the State that somewhere down around Mt. Gilead the people have located a poultry mine, and along in the Spring when the gall berries begin to blossom down in the low country the railroads begin to haul out of Montgomery County crates of friers until you would figure that Montgomery County must be on the Delectable Mountain, and living with the heads of the people in the clouds. At certain seasons the baggage car of the trains coming out of Montgomery County would incline you to think that a conference is in session down the road a short distance, or that the general assembly is convening tomorrow not far away. However, it is not the preachers that the chickens are going out to greet. But everybody. Without such names as Plymouth Rocks, Rhode Island Reds, Wyandotte, etc., Mt. Gilead would hardly be able to talk the English language, for those words con-

(Concluded on page ten)

# A Bright Outlook

For Your 1916 Game

## COLONEL

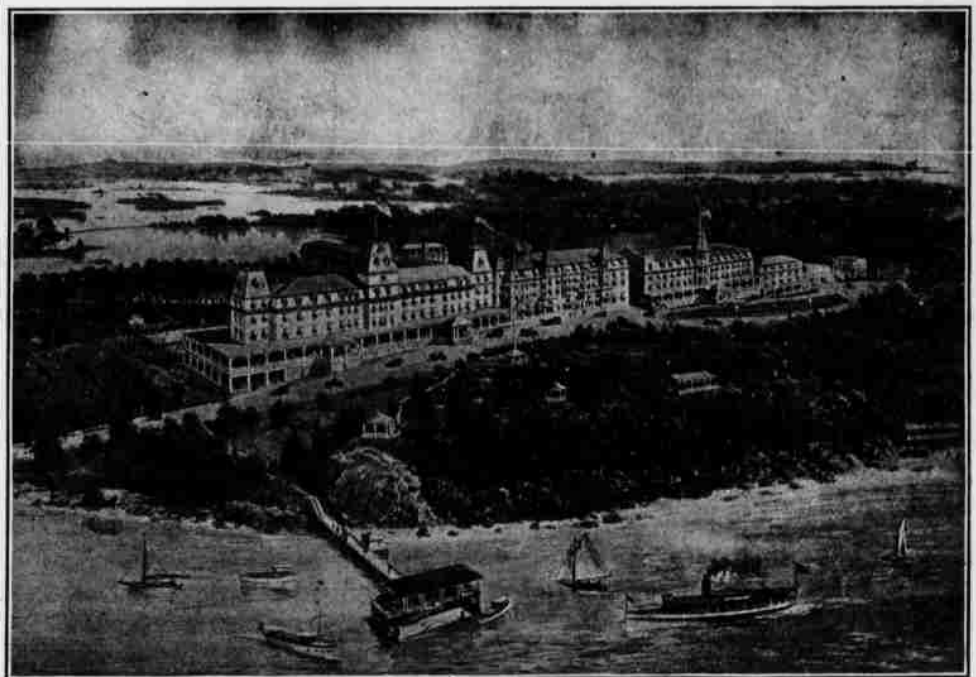
"27" "29" "31"



Colonel "27" Full size, floater } \$9.00  
Colonel "29" Medium size, sinker } Everywhere  
Colonel "31" Small size, sinker }

St. Mungo Manufacturing Co. of America  
121-123 Sylvan Ave., Newark, N. J.

New York, 36 Warren St. Chicago, 36 So. State St.  
Boston, 143 Federal St. San Francisco, 417 Market St.



## HOTEL WENTWORTH

NEW CASTLE PORTSMOUTH N. H.

The Leading New England Coast Summer Resort.

Every facility for sport and recreation: Golf, tennis, riding, driving, yachting, fishing, bathing and well equipped garage under competent supervision. Fine livery. Music by symphony players. Accommodates 500. Local and long distance telephone in every room.

Send today for illustrated booklet.

WENTWORTH HOTEL CO., H. W. Priest, Manager

Address Until May 1, The Carolina, Pinehurst, N. C.