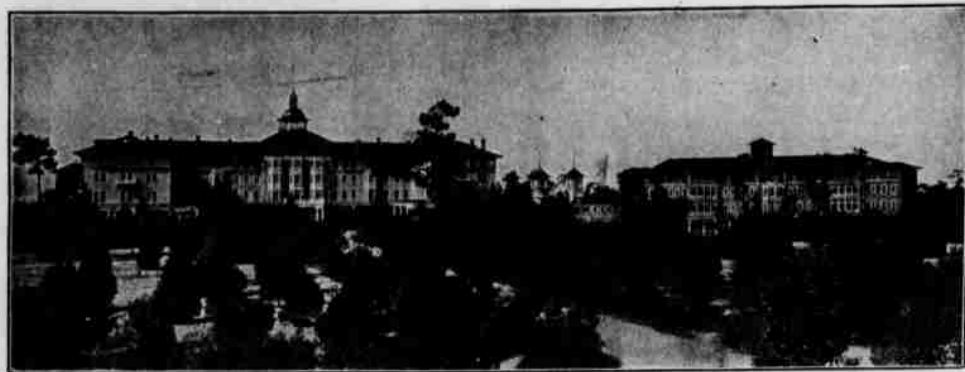


THE CAROLINA



The Largest and Best Appointed Hotel in the Carolinas
Private baths, telephones in all rooms, elevators, sleeping porches.
every possible convenience.

Open November 10th to Middle of April

H. W. PRIEST, Manager

Pinehurst N. C.

THE HOLLY INN



SEASON: JANUARY TO APRIL 30

The Holly Inn is one of the most comfortable, attractive and popular hotels in the South, caring for, with its annexes, 200 guests. The lobby has been enlarged since last season, contributing greatly to the comfort of the guests.

F. C. ABBE, Manager, Pinehurst, N. C.

The Berkshire



The Berkshire is a modern hotel, delightfully located, with all conveniences for health and comfort; bath rooms, steam heat, open fires, electric lights and sanitary plumbing.

J. M. ROBINSON, Manager.

PINEHURST, N. C.



For You—
Who Are Particular—
THIS CANDY!

As soon as you taste the wonderfully different flavors of the Page & Shaw chocolate coating—with its indescribable flavor, which only the manufacturers of these sweets know how to produce—you will experience the candy revelation of your lifetime. You will understand why Page & Shaw's is called "The Candy of Excellence."

Page & Shaw Candy once tasted, is never forgotten; its rich, individual flavor lingers as a happy memory!

To afford our clientele an opportunity of obtaining the very first quality in all lines, we have taken the agency for these candies and now represent Page & Shaw in this community.

Page & Shaw Candy (chocolates and bon-bons) may be had in 1, 2 and 5-lb. boxes—and in specialty form, in boxes of less than a pound.

Pinehurst Country Club

The Carolina

PINEHURST,

NO. CAROLINA