

Seggerman's Medal

(Concluded from page three)

last year; a powerful contingent of the old guard on the links, veterans of the Tin Whistle campaigns, familiar with every whisker and trickle on the course, such steady champions as Danforth, who can almost tell you within a yard of where his drive will land and the kind of lie it will have; as Dixon and Howard, who play by the clock and spend their time figuring birdies over the familiar landscape; Lancaster and McDonald, old hands at the game, scouts who discovered the course and who have a well devised offense for every cunningly planned defense invented by Donald Ross, winners without end in swatfest and local tourney, armed and ready for all comers in the familiar lists; H. L. Bond of Baltimore whose 86 is a warning of power in reserve and experience with buffer and spoon; George Small, the Baltimore player whose name we spend our life in writing, in connection with victory in loco golfitis, and Bond who makes 86 on demand.

When you consider that these constitute the first division and that Norman Maxwell, and Merriman, runner-up to Carter in this same battle last year, and Franklin Gates winner of the Carolina, and Becker the dean of them all, and Tom Kelley of the magic and inevitable brassie are in the second division, and such powerful players as Shannon and Phillips in the third, you can see that a hard contest is in progress.

As in every tournament this year the entries constitute a record that is astonishing. Over 200 entries qualified in this game, a figure that reminds us of Spring Tournaments in days gone by.

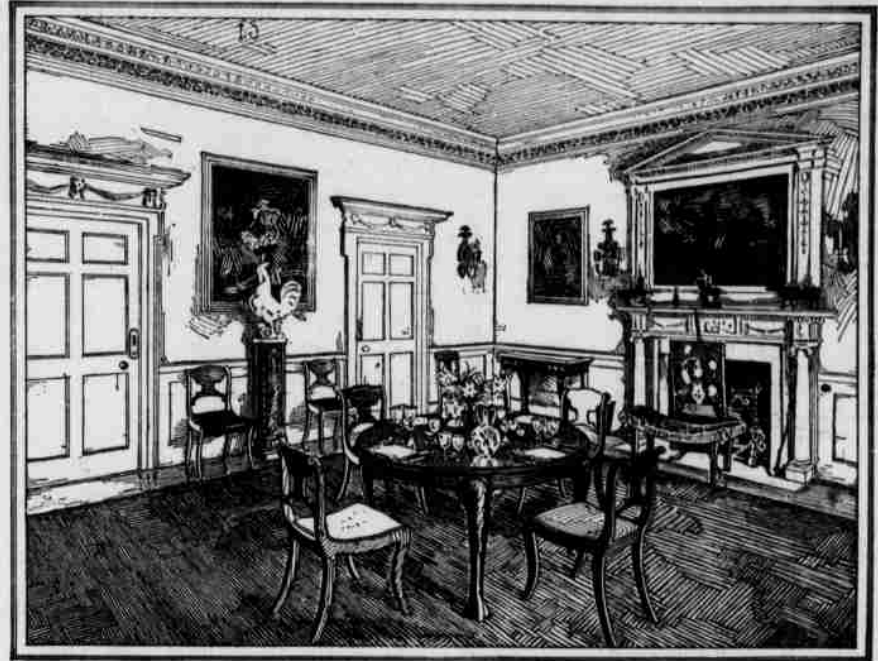
The summary shows the medal score and the outs and ins of everyone finishing.

SUMMARY

Qualifying Round	Course No. 2
H. V. Seggerman, Englewood	38-40-78
Robert Hunter, Wee Burn	39-41-80
E. C. Beall, Uniontown	40-43-83
J. D. Chapman, Greenwich	41-42-83
G. W. White, Flushing	38-45-83
W. E. Truesdell, Fox Hills	40-43-83
L.W.Maxwell, Sleepy Hollow	38-46-84
H. L. Bond, Baltimore	43-43-86
F. S. Danforth, North Fork	42-44-86
Grantland Rice, Englewood	43-43-86
George Small, Baltimore	42-44-86
C. G. Dixon, Philadelphia	43-44-87
G. M. Howard, Halifax	48-39-87

C. F. Lancaster, Woodland	43-44-87
W.J.MacDonald, South Shore	44-43-87
A. E. Ronney, Greenwich	43-44-87
T. A. Kelley, So. Pines	45-43-88
Norman Maxwell, Aronimink	40-48-88
Donald Parson, Youngstown	43-45-88
C. L. Becker, Woodland	45-44-89
F. H. Gates, Montclair	44-45-89
N. S. Hurd, Pittsburgh	45-44-89
B. P. Merriman, Waterbury	44-45-89
Pierce A. Proal, Red Bank	46-43-89
H.A.Waldron, Agawam Hunt	45-44-89
J. T. Bishop, Chevy Chase	45-45-90
W. S. Van Clief, Richmond	45-45-90
S. A. Hennessee, Cooperstown	39-51-90
C. S. McDonald, Lambton	42-48-90
S. O. Miller, Englewood	44-46-90
Austin Sands, Newport	44-46-90
T. H. Sullivan, Worcester	46-44-90
W. M. Weaver, Huntingdon	44-46-90
James W. Daly, New York	46-45-91
Kenneth McCabe, Brooklyn	50-41-91
H. G. Phillips, Moore Co.	44-47-91
A. C. Aborn, Montclair	45-47-92
A. R. Gardner, Dunwoodie	42-50-92
H. B. Keep, Tonwensia	45-47-92
F. H. Mahan, St. Davids	46-46-92
H. W. Ormsbee, South Shore	46-46-92
C. S. Ransom, Albany	47-45-92
F.A.Rhodes, Stanton Heights	47-45-92
R. C. Shannon II, Brockport	45-47-92
G. W. Statzell, Aronimink	45-47-92
S. C. Brennan, Worcester	51-42-93
G. T. Dunlap, Canoe Brook	43-50-93
E. P. Edwards, Mohawk	49-44-93
M. S. Morgan, Altoona	46-47-93
J. L. Weller, St. Katherines	45-48-93
J. D. Armstrong Shenecossett	42-52-94
D. F. McMahan, Dunwoodie	47-47-94
I. R. Prentiss, Mohawk	42-52-94
C. B. Hudson, North Fork	44-51-95
S. H. Patterson, Plainfield	45-50-95
Spencer Waters, Apawamis	47-48-95
R. H. Hunt, Worcester	44-52-96
J.G.Nicholson, New Bedford	45-51-96
C. W. Billings, Deal	46-51-97
H. E. Bradford, Waterbury	47-50-97
J. S. Brown, Jr., Montclair	44-53-97
Edward E. Franks, Worcester	51-46-97
S. P. Hayward, Glen Ridge	49-48-97
Royal R. Scott, Toledo	48-49-97
W. W. Sheldon, Great Neck	45-52-97
John A. Bryant, Detroit	50-48-98
H.H.Burgess, Shaker Heights	50-48-98
H. Fleming, Blue Hills	48-50-98
E.S.Montgomery,Stanton Hts.	44-54-98
J. K. Pearson, Greenwich	49-49-98
T. A. Cheatham, Pinehurst	49-50-99
Edward Doerkin, Arcola	47-52-99
S. H. Fields, Baltusrol	51-48-99
H. J. Frost, Glen Ridge	48-51-99
J. D. Meehan, Huntingdon	50-49-99
J. D. Musser, Portage	50-49-99
Walter Smedley,Atlantic City	49-50-99
W.T.Barr, Marine and Field	46-54-100
R.L.Chamberlain, Englewood,	49-51-100
C. B. Keen, Pine Valley	52-48-100
H. R. McKenzie, St. Andrews	48-52-100
C. H. Stenick, Flushing	53-47-100
J.P. Williamson, Wilkesbarre	50-50-100
Garrett A. Hobart, Arcola	52-49-101
P. B. O'Brien, Detroit	49-52-101
Isaac Adler, Irondequoit	54-47-101
Frank V. Long, New York	50-52-102
R. A. Balfe, South Shore	53-49-102
A. S. Higgins, St. Andrews	46 56-102
H. Moraff, Fox Hills	51-51-102
Col. R. A. Swigert, Palmetto	51-51-102
Max A. Adler, Genesee	53-50-103
E. J. Barber, Knickerbocker	50-53-103
C. P. Mason, Moore Co.	54-49-103
J. I. Williamson, Tedesco	50-53-103
J.W.Souther, Dyker Meadow	48-55-103

Community Plate



From a photograph by permission

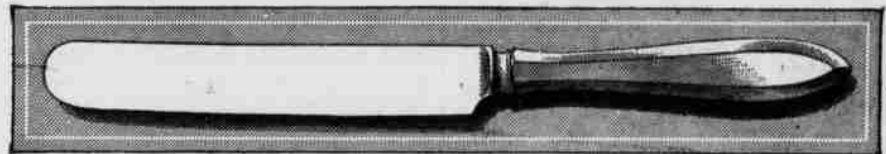
DINING ROOM of the LADY RANDOLPH CHURCHILL

Lady Randolph Churchill, mother of the English Statesman, Winston Churchill, is one of the distinguished patrons of Community Plate, among whom may be mentioned:

- | | | |
|-----------------------------------------------------------------------------------------------|------------------------------------------------------------------------------------------|-----------------------------------------------------------------------------------------------|
| Mrs. O. H. P. Belmont
Lady Randolph Churchill
Baroness de Meyer
Mrs. James B. Haggia | Mrs. Oliver Harriman
Duchess of Rutland
Mrs. F. C. Havemeyer
Mrs. Robert Jordan | Mrs. Honoré Palmer
Princess Troubetzkoy
Countess Cadogan
Mrs. Reginald C. Vanderbilt |
|-----------------------------------------------------------------------------------------------|------------------------------------------------------------------------------------------|-----------------------------------------------------------------------------------------------|

A Chest containing a complete outfit for the table can be bought at prices ranging from \$25.00 to \$250.00. Or sold in individual sets; for instance, six teaspoons \$2.50.

ONEIDA COMMUNITY, Ltd., Oneida, N. Y.



**AT THE
Carolina Theatre**

MONDAY, FEB. 5. 8.15 P. M.
The return of the old favorite,
HOUSE PETERS
in a fascinating Society Drama,
"THE HAPPINESS OF THREE WOMEN."
Black Diamond Comedy. Pictograph.

WEDNESDAY, FEB. 7. 8.15 P. M.
The Teddy Roosevelt of the Screen,
DOUGLASS FAIRBANKS,
In another rapid fire laugh producer,
"THE MATRIMANIAC."
Keystone Comedy.

FRIDAY, FEB. 9. 8.15 P. M.
The Charming Screen Star,
FANNIE WARD,
In a Gripping Story of the California
Mines
"BETTY TO THE RESCUE."
Keystone Comedy.

