

NEWCOMB HIGH GUN

(Concluded from page one)

put him in the money and the leading place in the Fourth Division.

MORGAN MAKES THE MAPLEWOOD

Even the far-famed Handicap hardly eclipsed the interest taken in the 100 targets scratch 16 yard shoot Thursday morning. This was not only the Critical turn into the stretch, the 4th hundred of the General Average event, but it was the "Maplewood Hundred." The winner of those five frames was to be granted the coveted privilege of shooting with those select champions in the rarified atmosphere of Maplewood.

The Big Guns, so to speak, were out for blood on this hundred. And a fellow might spend an hour or two with the fastest squads without the satisfaction of seeing a target hit the ground intact. There is some shooting going on when Newcomb and Powers and Yule and Morson don't even get a look in. When the smoke cleared away there were no less than four champions tied at 98—George N. Fish, W. H. Patterson, C. L. Richards and R. D. Morgan.

The shoot off drew the gallery, and worked the Gun Club busses over time, reminiscent of the days when Newcomb and Jahn shot even and perfect scores until the fame thereof had spread into the countryside and collected a multitude.

So these four lined up again. Morgan stepped up casually and dropped twenty dead. Patterson followed suit, and everyone settled back for a week or suspense when Fish did the same. Richards, who had the long run of the week—109 straight—and who eventually led the whole corps with a 99 on Saturday—missed the 18th bird, and fell from the race with a total of 19.

The second frame broke the charm. Morgan continued his stretch with another perfect score. But Patterson missed one, and Fish two. This gave Morgan his place on the highly exclusive firing line, and Patterson the chance of alternate.

THE SCORE OF THE PRELIMINARY HANDICAP

J. T. Vase (19)	18	20	19	20	17	—94
G. F. Marden (19)	15	20	19	19	19	—92
F. G. Fye (20)	19	18	18	19	18	—92
G. H. Martin (20)	20	18	16	18	20	—92
F. S. Wright (23)	19	17	18	18	19	—91
C. C. Hedstrom (17)	19	19	20	19	14	—91
F. D. Kelsey (16)	18	20	20	19	14	—91
N. R. Gooderham (20)	17	19	20	16	18	—90
D. J. Dalton (18)	17	19	18	17	19	—90
William Wettleaf (21)	17	17	18	18	19	—89
B. V. Covert (19)	20	16	18	16	19	—89
R. F. Willis (18)	16	18	20	17	18	—89
G. H. Hunt (16)	20	16	17	19	17	—89
George Gray (16)	17	18	18	19	17	—89
T. T. Todd (19)	15	19	19	17	19	—89
J. D. Allen (19)	17	19	17	16	19	—88
A. E. Atherton (18)	15	20	17	18	18	—88
H. W. Jeffrey (18)	18	17	19	18	16	—88
F. E. Watkins (18)	18	16	19	17	18	—88
M. S. Hootman (21)	14	19	17	19	19	—88
W. L. Egner (17)	17	16	20	16	19	—88
C. B. Platt (22)	15	18	16	19	19	—87
C. F. Seeley (18)	15	17	20	18	17	—87
S. Sheftall (18)	16	17	18	17	18	—87
C. L. Richards (21)	18	17	16	18	18	—87
W. H. Yule (20)	18	17	16	19	17	—87
J. B. Pennington (20)	17	16	19	19	16	—87
H. H. Morson (21)	17	16	19	17	17	—86
C. B. Stickley (20)	18	18	15	15	20	—86

W. W. Vanderhoof (20)	17	17	16	19	17	—86
A. G. Healey (19)	16	18	17	19	16	—86
P. S. Craig (17)	17	13	20	19	17	—86
Jay Hall (17)	17	14	19	19	17	—86
S. G. Vance (21)	17	18	16	17	17	—85
H. W. Cooley (20)	16	14	17	19	19	—85
F. V. Rosebery (20)	16	18	17	17	17	—85
P. W. Whittemore (20)	15	17	18	19	16	—85
W. G. Allen (18)	15	18	19	18	15	—85
F. B. Leland (19)	17	15	17	17	19	—85
J. R. Cothran (18)	18	15	17	16	19	—85
J. B. Fontaine (18)	18	16	19	16	16	—85
D. K. Dickinson (18)	17	17	17	18	16	—85
C. J. Jessop (17)	18	16	20	13	18	—85
C. M. Powers (22)	17	14	16	19	18	—84
J. E. Jennings (21)	16	17	17	16	18	—84
R. W. Smoote (21)	18	16	18	17	15	—84
R. A. Hall (20)	16	18	20	17	13	—84
J. H. Cox (19)	17	17	17	15	18	—84
M. McVoy, Jr. (19)	14	16	18	19	17	—84
W. H. Gooderham (18)	14	19	18	15	18	—84
W. W. Posey (18)	14	15	18	18	19	—84
J. H. Trumbull (17)	16	17	17	17	17	—84
G. S. Dickey (16)	17	15	19	15	17	—83
H. E. Dickerman (20)	17	15	16	17	18	—83
C. W. Billings (19)	18	18	16	15	16	—83
E. V. Kirby (19)	16	16	16	17	18	—83
Ed. Morse (19)	17	15	19	20	12	—83
C. H. Parker (19)	16	15	16	18	18	—83
W. G. Ramsey (19)	16	19	17	13	18	—83
I. Andrews (18)	18	17	18	15	15	—83
C. H. Newcomb (23)	15	17	16	17	17	—82
W. H. Patterson (21)	17	16	17	16	16	—82
J. I. Chipley (21)	17	14	18	19	14	—82
H. Atkinson (18)	16	17	16	15	18	—82
H. Almerst (16)	16	16	17	17	16	—82
W. L. Foster (16)	17	14	15	19	17	—82
R. D. Margan (21)	17	18	14	18	14	—81
E. E. Ellis (20)	18	15	16	16	16	—81

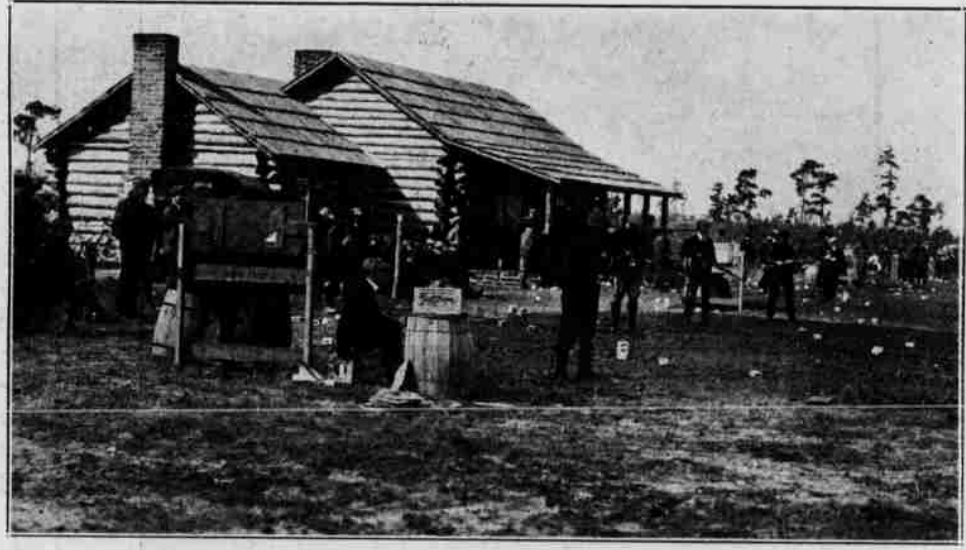
In addition to the many trips taken during the week, a party composed of Mrs. Morrill, Mrs. H. B. Lewis, Mrs. E. P. Spencer, Annie Oakley, Mr. W. C. Bradley and Mrs. H. Winchester took to horse for an outing last Sunday afternoon. Pine Bluff was finally selected as the destination and upon arriving there the brigade were joined by Miss Marion Abbe and Mr. H. W. Moore who had motored over. Tea was enjoyed at the Pine Bluff Inn and soon after the journey home was begun and ended in the darkening hours of twilight.

PATTERSON SOLE SURVIVOR

Outlasts Tin Whistles In Swatfest Vardell Wins the Second Class

There is one soul satisfying thing about a foot race or a steeple chase that is lacking in the usual round of golf. The winner has the joy of not only beating his rivals by card and by record, he actually leaves them behind, in ignominious graphic demonstration of their inferiority.

Perhaps it was to provide the satisfaction of demonstrated and isolated



HIGH TIDE IN THE MIDWINTER.

F. Remy (19)	16	14	15	18	18	—81
C. F. Lambert (18)	13	14	19	18	17	—81
V. A. Vanderwood (18)	18	16	17	15	15	—81
W. E. Beers (17)	15	12	18	19	17	—81
S. E. Clark (17)	16	13	20	16	16	—81
Geo. McCutcheon (16)	17	14	17	17	16	—81
C. D. Coburn (22)	15	19	16	18	12	—80
D. F. McMahon (21)	13	15	18	17	17	—80
F. B. Hatfield (20)	18	14	16	17	15	—80
J. M. Morehead (19)	16	17	14	16	17	—80
Jas. McVicar (19)	13	17	17	19	14	—80
F. J. Ham, Jr. (18)	18	12	15	19	16	—80
H. Hensler (18)	17	15	19	15	14	—80
W. J. Stoddard (17)	18	12	17	17	16	—80
F. A. Seibert (17)	16	17	15	17	15	—80
F. Billmeyer (20)	17	14	17	17	14	—79
E. H. Castle (20)	17	16	14	16	16	—79
C. D. McGary (20)	16	14	14	18	17	—79
Mrs. J. D. Dalton (16)	18	14	17	16	14	—79
Geo. Burns (19)	16	14	16	15	17	—78
F. A. Baker (18)	15	13	18	17	15	—78
J. L. Humper (18)	16	12	16	16	18	—78
J. P. Breneman (17)	17	17	18	14	12	—78
Edw. Shaffer (16)	17	15	17	14	14	—77
R. C. Smith (21)	11	18	16	16	16	—77
G. N. Fish (23)	14	13	16	18	16	—77
J. K. Herr (19)	15	14	15	15	18	—77
J. H. Andrews (16)	17	14	15	14	16	—76
Jno. Ebberts (18)	12	18	14	15	17	—76
Chas. Nichols (20)	15	14	16	16	14	—75
J. B. Lallance (20)	15	16	15	16	12	—74
H. H. Duden (17)	14	15	14	15	16	—74
J. P. Sousa (18)	11	13	18	14	17	—73
F. E. Herr (16)	16	13	17	13	13	—72
Jas. Craig (17)	16	17	14	11	14	—72

splendor to the victor that the swatfest was invented, inaugurated, and once again played last Tuesday by the full cry of the Tin Whistle Club on the championship number two course of the Pinehurst Country Club.

This is the way it goes. Handicapped in such wise as to be even to within a fraction of a putt, by the infallible system of discounting innumerable previous performances, the game proceeds on medal play rules. Nineteen players, no more, no less, constitute a division. And at the first hole the high man is canned. He drops out. He is beaten on the spot, and left nursing a fall. On the second hole another unfortunate is dropped to the tune of derisive laughter. And so one is selected—or selects himself—for downfall at every cup, until at the eighteenth green but one remains, the undisputed champion.

In the first class this unquestioned leader proved to be S. H. Patterson of Plainfield. His triumphant progress was strewn with the remains of many famous players. Howard Phillips, he so often bringing home the bays, fell at the first

barrier. M. B. Johnson was served up next. Barr went down at the turn, Chick Fownes was left at the water hole, and only Statzell, Becker and Patterson survived at the 17th. Here Statzell met his fate, and was left in anguish by the Woodland veteran and the hardy Patterson. On the eighteenth the pace got a grain too fast for Becker, and Patterson held the palm alone.

J. R. Towle, whose net card for the round was 79, pushed Fred Vardell all the way in the Second Division, only to drop at last, even as Becker had done. Vardell's net was 77, and with this he grasped the prize.

Summary. Played on Nnumber Two. CLASS A

S. H. Patterson	47	44	91	16	75	Won Contest
C. L. Becker	46	42	88	8	80	Dropped at 18th
Geo. W. Statzell	47	51	98	12	86	17th
G. T. Dunlap	47	48	95	14	81	16th
H. G. Waring	48	50	98	15	83	15th
W. E. Truesdell	44	45	89	7	82	14th
H. C. Fownes	43	43	86	9	77	13th
R. C. Shannon, II	46	44	90	7	83	12th
W. H. Gregg, Jr.	51	49	100	14	86	11th
C. B. Fownes	41	44	85	8	77	10th
W. T. Barr	49	46	95	15	80	9th
H. W. Ormsbee	52	50	102	16	86	8th
L. D. Pierce	46	45	91	9	82	7th
P. S. MacLaughlin	50	46	96	12	84	6th
J. R. Bowker	46	46	92	12	80	5th
C. F. Lancaster	55	48	103	13	90	4th
T. A. Kelley	53	54	107	6	101	3rd
M. B. Johnson	52	53	105	14	91	2nd
H. G. Phillips	51	45	96	7	89	1st

CLASS B

Fred Vardell	51	43	94	17	77	Dropped at
J. R. Towle	54	48	102	23	79	18th
T. J. Check	55	52	107	18	89	17th
J. V. Hall	53	52	105	17	88	16th
J. D. Gallagher	58	57	115	27	88	15th
N. D. Clark	54	53	107	20	87	14th
R. C. Blanche	55	56	111	25	86	13th
Geo. A. Magoon	59	54	113	19	94	12th
H. P. Hotchkiss	53	51	104	16	88	11th
C. C. Swaney	52	50	102	22	80	10th
P. B. O'Brien	55	48	103	17	86	9th
H. H. Treadwell	59	55	114	24	90	8th
W. A. Sandford	58	52	110	26	84	7th
F. C. Abbe	58	57	115	25	90	6th
Jas. Barber	58	57	115	23	92	5th
J. D. C. Rumsey	59	49	108	20	88	4th
J. M. Robinson	58	51	109	25	84	3rd
G. W. Watts	63	54	117	22	96	2nd

FIELD TRIAL OPENS MONDAY

Dan Morgan's French Griffons and Kirkover's String Enhance Field

The drawings for the First Annual Field Trials of the Pinehurst Kennel Club will take place next Monday morning, February 4th. The drawings will be made on Saturday and posted in all the hotels.

The course is being laid out to cover two five mile runs, one in the morning and one in the afternoon. It is being so planned that the noon hour will find the whole party—handlers, judges, owners, spectators, the following company on horseback and the buggy riders and wagon trailers all assembled for lunch in an attractive pine grove overlooking the valley of Horse's Creek.

The committee have announced the following prizes:

For the Membership stakes, the shooting dog class, \$25 in cash or silver to

(Continued on page eleven)