

HIGHLAND PINES INN

(Weymouth Heights)

SOUTHERN PINES, - NORTH CAROLINA

(On main line of Seaboard Air Line Railway, and on Capital Highway, five miles from Pinehurst)

OVERLOOKING THE
GOLF COURSE;
AND
COUNTRY CLUB



OPEN
DECEMBER
TO
MAY

Golf Tennis Shooting Fox Hunting Racing Canoeing

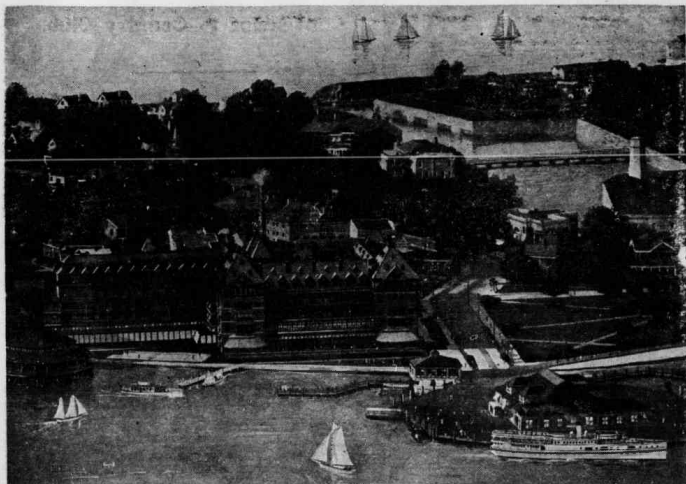
MOTORING--HUNDREDS OF MILES OF THE BEST ROADS IN THE SOUTH RADIATE FROM

SOUTHERN PINES COMPLETELY EQUIPPED GARAGE WELL STOCKED STABLE

GOOD MOTOR BUSS SERVICE TO PINEHURST AND NEIGHBORING RESORTS

Creamer & Turner, Proprietors

✍ Write for Illustrated Booklet ✍



AEROPLANE VIEW OF OLD POINT COMFORT

Taken by one of the Royal Italian Flying Corps, from a great Caproni Bi-plane.

Hotel Chamberlin directly faces Hampton Roads, the constant scene of every phase of Marine Activity.

Immediately in front is the Naval Training Base and Aviation School. Langley Field, the Army Aviation Experiment Station, is the "Show Place for Aviation in America."

THE EIGHTEEN HOLE GOLF COURSE is six minutes away by trolley. The Course is in excellent shape. GOLF EVERY DAY IN THE YEAR is almost a certainty.

A colored Aeroplane Map of the Course, the only one of this kind ever made in America, as well as our booklet "GOLF" will be sent you, if you wish.

MEDICINAL BATH DEPARTMENT, COMPLETE IN EVERY DETAIL.

Every Bath and Treatment, as given at European Spas, with the additional advantages of sea-breezes and sea-bathing.

For further particulars, booklets, etc., address,
GEO. F. ADAMS, MGR., - FORTRESS MONROE, VIRGINIA.

"WESTERN" Steel-Locked Shells

Always the Choice of the Man
who Knows

The sensational performances of "Western Field" Shells at the traps have opened the eyes of thousands of shooters who never shot at a target thrown from a trap. And the same exceptional shooting qualities which placed them at the head in trapshooting are making a big hit with the man who hunts. Besides the higher velocity and closer pattern, which makes longer kills possible, "Western" Shells never "hang up" in magazine guns the Steel-Locked construction and the hard, tight crimp being responsible for a smoothness of action and reliability in function that is impossible in shells having weak heads and mushy crimps. And in wettest wether "Western" Shells will continue to work well for, to begin with, they contain paper made from a special and superior pulp, added to which is a water-proofing material which, for effectiveness, has never been equalled by any other manufacturer in the world. Sold by progressive dealers in all gauges and in all popular loads, in smokeless and black. "Field" and "Record" loaded with all Standard Smokeless Powders. "Perfect from Primer to Crimp."

WESTERN CARTRIDGE CO., EAST ALTON, ILL.