

**BRETTON WOODS**

IN THE HEART OF THE WHITE MOUNTAINS OF NEW HAMPSHIRE  
New nine hole course completed so can play first 9 on present 18 and new nine.

**THE MOUNT PLEASANT**

C. J. Dunphy, Manager  
Winter: The Copley Plaza  
BOSTON, MASS.

**THE MOUNT WASHINGTON**

C. J. Root  
Winter: Hotel Clarendon  
SEABREEZE, FLA.

Information at 243 Fifth Ave., New York, and all of Mr. Foster's offices



**Bank of Pinehurst**  
CHECKING AND SAVING ACCOUNTS  
SAFE DEPOSIT BOXES TO LET  
We Sell New York Exchange and A. B. A. Travelers' Cheques

**SPECIALTY SHOP**

OF

**Ladies' Apparel**

Skirts, Coats, Suits, Dresses, Waists, Neckwear, Hosiery, Hats and Underwear  
MRS. HAYES, Opposite P. O. OPEN DEC. 1st.

**Glenburnie Club and Cottages**

LAKE GEORGE, N. Y.  
In Adirondacks

AN IDEAL SUMMER RESORT  
Charming in Location and Refinement  
GOLF, TENNIS, BATHING, BOATING  
MUSIC and DANCING  
Recreation Leader for Children

W. B. FOSHAY, Manager  
Winter Address, DELAND, FLA.

IN THE WHITE MOUNTAINS  
**Bethlehem Country Club**

Bethlehem, New Hampshire

Golf under Ideal Conditions. 18 Hole Course—6026 yards. Modern Club House. Steel Lockers—Showers. Two Clay Tennis Courts. Clock Golf and Putting Greens.

**Bethlehem has 30 Hotels**

Their guests have the privileges of the Club.

**J. Franklin Meehan & Son**

Landscape Architects

Mount Airy, Philadelphia, Pa.

This concern goes just one step further than the ordinary Landscape Architect. It not only gives professional advice and prepares planting and construction plans but actually executes them. A complete establishment for the conception and execution of all Landscape work together with a permanent force of experts for all maintenance purposes.

**TOP DRESSING PUTTING GREENS**

The old time compost pile made with manure, sand and soil is becoming obsolete and is being discarded by the majority of Golf Clubs in favor of Prepared Top Dressing which comes ready to apply. It takes two years before a compost pile is fit for use. It is costly, even when all the ingredients are at hand, and absolutely impracticable if they must be purchased. The labor of turning and screening is also expensive. The automobile has reduced the quantity and increased the price of manure. Manure is a carrier of disease germs and weed seeds. Shavings for bedding and strong disinfectants in stables, mean death to grass.

The Alphano Humus Company's corps of experts have made an intense study of this problem for many years. The result is, their Prepared Top Dressing for Putting Greens—a scientifically balanced grass food, inoculated with billions of Nitrogen gathering bacteria. It is delivered in the right condition for top dressing greens, just as unloaded from car. The finest Putting Greens in America today owe their perfection to Prepared Top Dressing periodically applied with no interference with the play.

To be always positive that the grass seeds best adapted to the locality and climatic conditions are sown in connection with Prepared Top Dressing, to insure results certain of satisfaction, The Alphano Humus Company has effected selling arrangements with the largest grass seed exporters and importers of the world and can furnish grass seeds of the proper variety, of guaranteed purity and highest germination tests.

If you will write The Alphano Humus Company, 17 Battery Place, New York City for Circular "K," it will give you full particulars regarding their Golf Course Service, without obligation.



GENUINE  
**HILDEBRANDT  
SPINNERS**

CATCH ALL KINDS OF GAME FISH.  
See them at your Dealers.  
THE JOHN J. HILDEBRANDT CO.,  
LOGANSPOUT, IND.

**COUNTRY CLUB ANNUALS****GOLF**

The dates, composition and prizes of the principal tournaments to be held during the season on the Pinehurst links are as follows:

FEBRUARY 8, 9, 10, 11.—SIXTEENTH ANNUAL ST. VALENTINE'S TOURNAMENT FOR WOMEN.—Qualifying round and finals, eighteen holes on the morning of each day. One or more eights to qualify. Gold medal for best qualification score; sterling trophies for winners and runners-up in each eight. Special trophies for additional divisions.

FEBRUARY 21.—SEVENTEENTH ANNUAL TIN WHISTLE ANNIVERSARY TOURNAMENT.—Note.—According to the privilege granted seven years ago by the Board of Governors of the Pinehurst Country Club the right of way on number two course is given to the Tin Whistle Club for two hours on this day.

MARCH 7, 8, 9, 10, 11, 12.—SEVENTEENTH ANNUAL SPRING TOURNAMENT.—Qualifying round, thirty-six holes; finals, eighteen holes in all divisions. Gold medal for best qualification score; President's Trophy to winner of first sixteen; Governors' Trophy to winner of second sixteen; Secretary's Trophy to winner of third sixteen; Treasurer's Trophy to winner of fourth sixteen; Captain's Trophy to winner of fifth sixteen; Club Trophy to winner of sixth sixteen; trophies to winner of seventh, eighth, ninth, tenth, eleventh, twelfth, thirteenth and fourteenth divisions; sterling trophies to first, second, third, fourth, fifth, sixth, seventh, eighth, ninth, tenth and eleventh division runners-up and consolation division winners; silver medals to division runners-up and consolation division winners in the twelfth, thirteenth and fourteenth divisions. Special trophies for additional divisions.

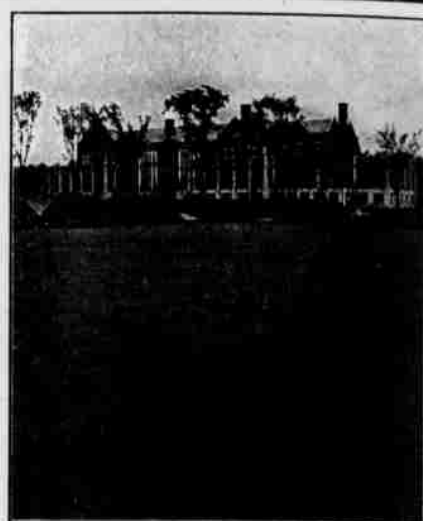
This tournament will be conducted on the Pinehurst System, explained in connection with the Midwinter Tournament. There will also be a Consolation Tournament as in the Midwinter.

MARCH 25, 26, 28, 29, 30.—NINETEENTH ANNUAL UNITED NORTH AND SOUTH AMATEUR CHAMPIONSHIP FOR WOMEN.—Qualifying round and finals, eighteen holes to be played on the morning of each day, four divisions to qualify, first division of sixteen, other three divisions of eight. Gold medal for best qualification score. Championship Trophy to winner of first division; Governors' Trophy to winner of second division; Secretary's Trophy to winner of third division, and Treasurer's Trophy to winner of fourth division, and sterling trophies to runners-up and consolation division winners in each division. Special trophies for additional divisions.

APRIL 1, 2.—NINETEENTH ANNUAL UNITED NORTH AND SOUTH OPEN CHAMPIONSHIP.—Seventy-two holes medal play; amateur winning first prize to receive a trophy. First prize for professionals, \$300; second prize, \$200; third, \$150; fourth, \$100; fifth, \$75; sixth, \$60; seventh, \$50; eighth, \$40; ninth, \$30; tenth, \$25. Player making best score receives championship gold medal.

(Continued from Page Three)

H. N. Marshall	140 202 213—555
G. W. Carroll	out 213 217
J. D. Chapman	206 226 out



The Nassau Country Club  
One of the many golf courses where  
Grass Seed is supplied by the  
Stump & Walter Co.

For the GOLF COURSE,  
TENNIS COURT or LAWN

## Grass Seed

of Known Quality

TESTED for PURITY  
and GERMINATION

REMEMBER—All our seed is of the highest quality, purchased direct from the most reliable sources of supply and is carefully examined as to purity and growth, including tests made for us by leading Seed Testing Stations. We furnish on request the percentage of purity and growth.

We are always glad to suggest formulas, suited to soil and climate, and tell you the exact percentage of each of the varieties in the formula, or, we furnish seed by named varieties.

Write for Prices and Samples.

**Stump & Walter Co.**

30 Barclay St.,

New York

**SPECIAL SALE**

AT

**MERROW'S STUDIO**

Georgette Blouses, Millinery,  
Silk Dresses, Silk and Muslin  
Underwear, Sweaters, Silk  
Stockings, Fancy Work.

**ALL BELOW COST**

Tarpon Springs, Fla.

**TARPON INN**

Golf—Grass Greens

HOWARD V. DALTON, Mgr.

Formerly The Bellevue,  
Belleair, Fla.

Phone 66-R

Southern Pines Garage  
FOR

**DODGE BROS. MOTOR CARS**

WILLARD STORAGE BATTERIES

**Dr. J. Ernest Judd**  
SURGEON DENTIST

Formerly of Southern Pines and Pinehurst, now located 140 West 34th Street, (Phone Fitz Roy 5436) New York City. All branches of Dentistry guaranteed. Pyorrhea, Alveolaris successfully treated.

**Packard and Sally**  
Builders

PINEHURST,

N. C.