

The PINEHURST OUTLOOK

Vol. XXVII

FEBRUARY 23, 1924

Number 10

Entered as second class matter at the post office at RICHMOND, VA. Subscription, \$2.00 per year.

St. Valentine's Tournament for Women

MRS. RONALD H. BARLOW, of Merion Cricket Club, Philadelphia, one of the most remarkable golfers for her years in all the long history of the game, made a bold attempt to repeat her 1923 success in the 19th annual St. Valentine tournament which was conducted on the No. 1 course from February 11th to 14th. After tying at 84 with Mrs. John D. Chapman, of Greenwich, Conn., in the medal round, Mrs. Barlow went through the match play stages until she was beaten on the 19th hole of the final by Miss Dorothy Richards, of the Mayfield Country Club, Cleveland.

That final match will linger long in the memory of those who were fortunate enough to be in on it as galleryites. Mrs. Barlow got an early lead of two holes but poor putting proved costly and at the seventh Miss Richards had evened matters. Then followed the longest continuous run of divided holes in all Pinehurst golfing history. At hole after hole one or the other appeared to have a commanding advantage, only to have the other slip in a good recovery or a ticklish putt and gain a half.

At the short 11th hole Miss Richards drove to within six feet of the hole but she missed fire and Mrs. Barlow, whose drive was short and whose second left her a 12-footer, got it down for the half. A remarkable run-up shot out of a bad lie in loose sand saved the Philadelphia veteran at the 12th. At the 13th she ran down a 20-footer for a 3 and then Miss Richards rammed in her 15-footer.

No stymies appeared in the

entire match except at the 15th and it was fitting here that, after Miss Richards thus barred the way, Mrs. Barlow sliced her ball enough so that she in turn stymied the Cleveland young lady.

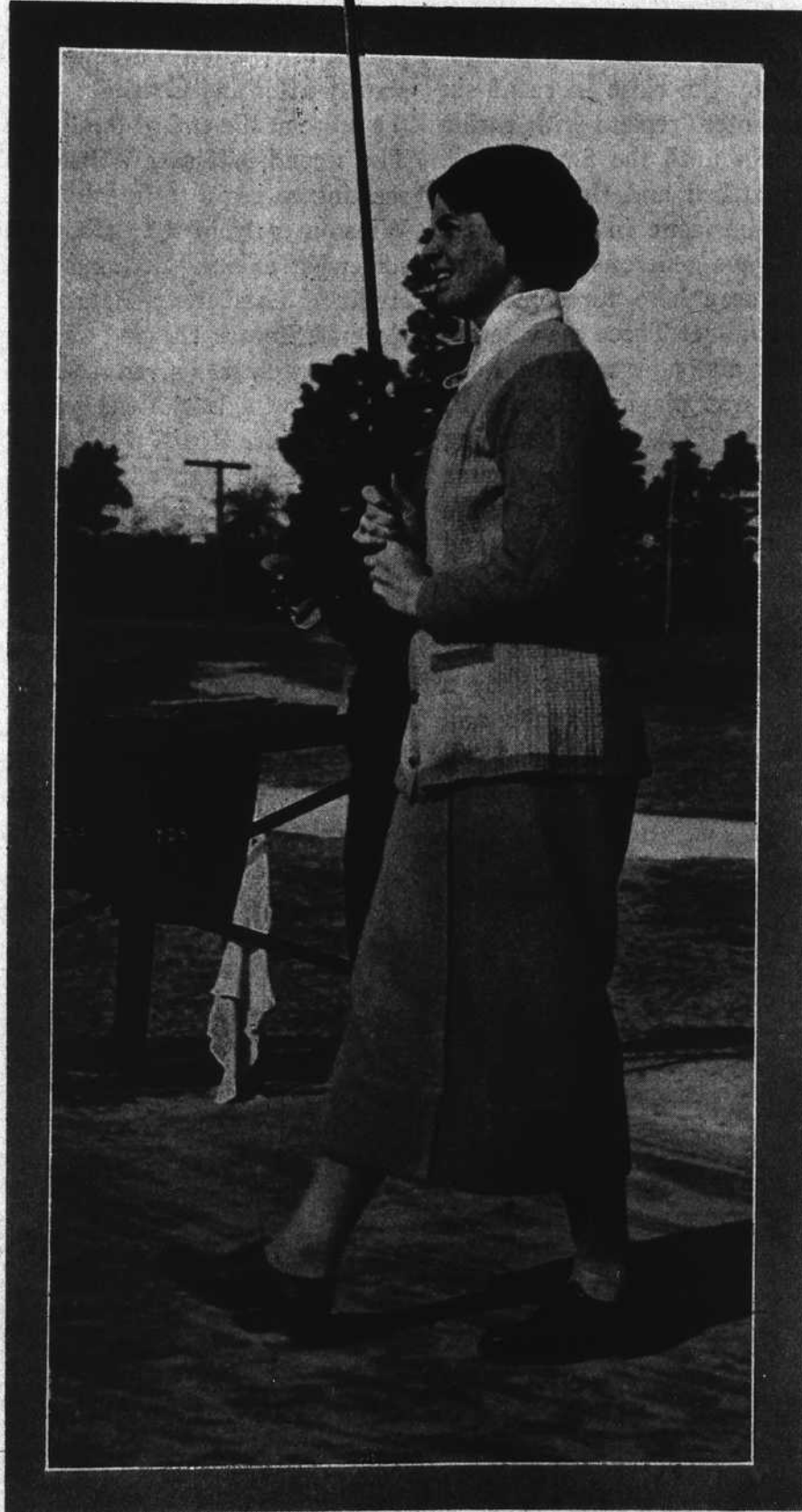
Much of the way after the fifth hole it was Mrs. Barlow who was struggling to save the match. On the last three holes the issue was put squarely up to the younger lady and she there showed her fighting qualities. At the 16th she followed a beautiful drive by topping her iron into the road, from a bad lie in which she played a beautiful shot to the green. Mrs. Barlow hit her first two shots none too cleanly and her third too much so, and she was well over the green near the pine grove, but she appeared to be winning the hole and perhaps the match, for it was a crucial stage, when she ran her ball in for a 4 from at least 50 feet away. But Miss Richards gamely holed from 20 feet.

The early advantage was with Miss Richards at the long 17th, where her second was well up the slope, but Mrs. Barlow used her head by placing her third safely to the left of the cross trap and then, out of a grassy hollow 50 yards from the green, ran her ball a foot from the cup. Again Miss Richards had to drop a hard putt for the half in 5.

Neither got to the green against the wind at the 18th and they were left, Miss Richards with a 15-footer and Mrs. Barlow with a 10-footer. Both missed and then Miss Richards had to sneak her ball past the other ball, which was on the very lip. That yard putt was one of the toughest to negotiate of the entire match.

In the end it was too long a drive on the extra hole that beat

(Continued on page 11)



Miss Dorothy Richards, who defeated Mrs. Barlow in an extra hole final match in the St. Valentine's tournament this week