



*Air Glimpse of Sedgefield Inn*

**GOLF AMID IDEAL  
CONDITIONS AT  
Sedgefield**

Sedgefield Inn overlooks the famous Valley Brook golf course, a course with a touch of magic and irresistible to the golfer once playing it. Grass Greens, large and undulating and with a putting surface smooth as velvet.

*"Air like wine - keep your head down - Carolina sunshine - go back slowly - gay companions - follow through - all the world a thrill - let the club do it - That's golf - That's Sedgefield."*

*For Reservations Address*

**Sedgefield Inn**

*Sedgefield—GREENSBORO, N. C.*

*The*  
**PINEHURST  
OUTLOOK**

Vol. XXXI      JANUARY 31, 1928      Number 9



**CONTENTS**

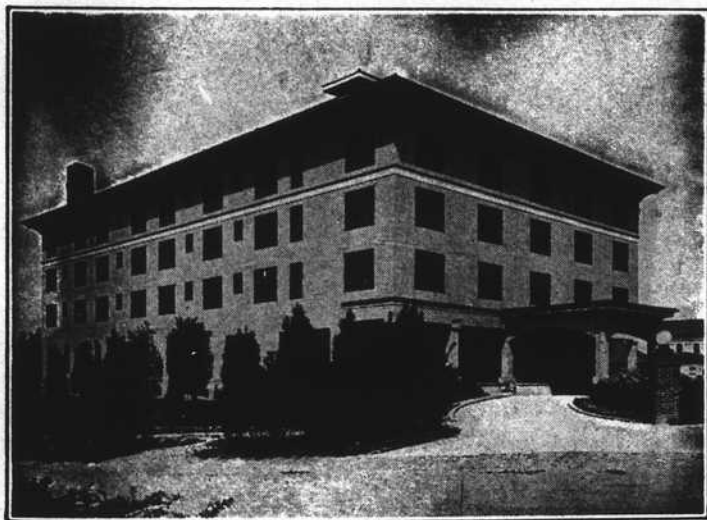
	Page
PHOTOS . . . . .	2
PINEHURST PERSONALITIES . . . . .	3
MARK ARIE LEADS FIELD IN PINEHURST TRAPSHOOTING TOURNAMENT . . . . .	4
PINE NEEDLES INN OPENING USHERS IN NEW ERA IN SANDHILLS . . . . .	6
LINKINGS . . . . .	8
PINEHURST HOTEL NOTES . . . . .	11
PINEHURST TIN WHISTLE & SILVER FOILS TOURNAMENTS . . . . .	14
SEASON'S SPORTS PROGRAM . . . . .	15-16

**Razook's**  
Importers

Theatre Building  
Pinehurst, N. C.

*Distinctive Sports  
Apparel  
for Women*

**Gowns Wraps  
Hats  
Hosiery  
and Lingerie**



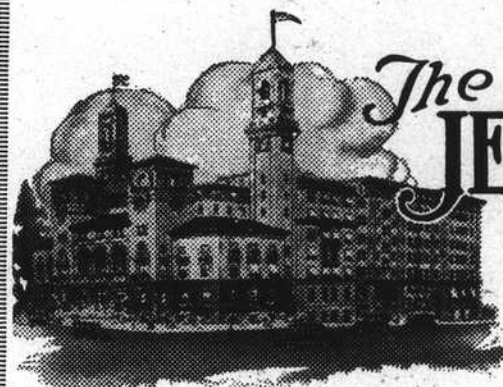
ERECTED IN 1923

**The Manor**  
PINEHURST, NORTH CAROLINA  
*Open November to May*

A new hotel, luxuriously furnished and catering to an exclusive clientele. All rooms with bath. Unexcelled cuisine. Elevator service. Telephone in all rooms.

*Pinehurst Country Club Privileges  
Apply for Rates and Reservations*

**MRS. E. C. BLISS**  
OWNER AND MANAGER



*The*  
**JEFFERSON**  
*Richmond  
Virginia*

**A** PPEALS to an excellent clientele who appreciates its unusual appointments - its splendor - its cuisine and its atmosphere of refinement.

Excellent Food      Efficient Service  
whether you dine

In the Golden Room  
In the Palm Court  
or

In your own apartment

Rooms at The Jefferson are moderately priced and may be had single or en suite.

**THE JEFFERSON**

*The Hotel of the South  
with an appealing atmosphere*

Franklin at Jefferson and Adams Streets  
**WALLINGTON HARDY, Manager**

Owning and Operating also  
The Belvedere, at Baltimore - The Monticello, at Norfolk