



Air Glimpse of Sedgefield Inn

**Embowered Bridle Paths
Invite You to
Sedgefield**

An Old English hostelry is a central feature of the extensive country estate, where miles of enticing bridle paths winding through virgin forests of pine and hardwood extend a constant invitation to the lover of equitation.

A spirited horse - an exhilarating morning - a canter over the dew-diamonded bridle trails - the sunshine of the rolling Piedmont hills - and at the end of the ride the comfort and coziness of Sedgefield Inn.

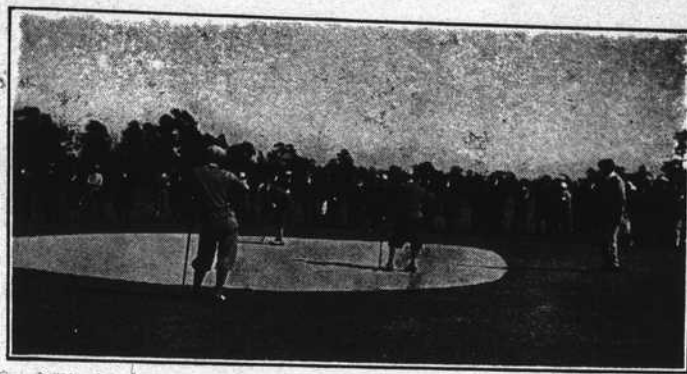
For Reservations Address

Sedgefield Inn

Sedgefield—GREENSBORO, N. C.

The
**PINEHURST
OUTLOOK**

Vol. XXXI FEBRUARY 7, 1928 Number 10



CONTENTS

	Page
PHOTOS	2
PINEHURST PERSONALITIES	3
MISS VAN WIE TRIUMPHS IN PINE NEEDLES GOLF TOURNAMENT	4
WINTRINGER WINS SECOND PINEHURST LINKS TITLE IN ST. VALENTINE COMPETITION	5
PINEHURST HOTEL NOTES	6
FIELD TRIALS DRAW LARGE NUMBER OF DOG FANS ..	7
SOUTHERN PINES GLIMPSES	8
THE TRANSFORMATION OF A DESERT	9
LINKINGS	10
SEASON'S SPORTS SCHEDULE	11-12

Razook's
Importers

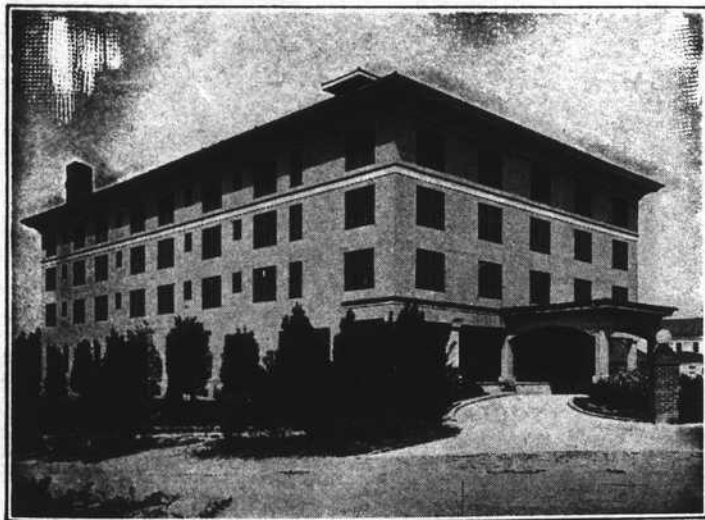
Theatre Building
Pinehurst, N. C.

*Distinctive Sports
Apparel
for Women*

Gowns Wraps

Hats

**Hosiery
and Lingerie**



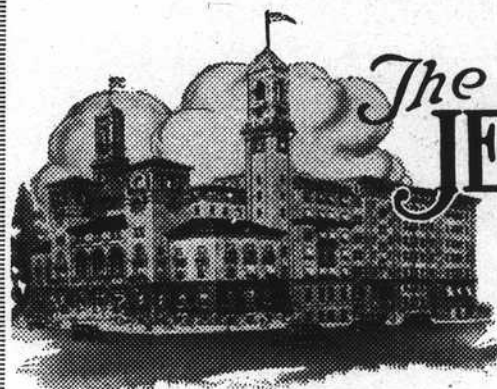
ERECTED IN 1923

The Manor
PINEHURST, NORTH CAROLINA
Open November to May

A new hotel, luxuriously furnished and catering to an exclusive clientele. All rooms with bath. Unexcelled cuisine. Elevator service. Telephone in all rooms.

*Pinehurst Country Club Privileges
Apply for Rates and Reservations*

MRS. E. C. BLISS
OWNER AND MANAGER



The
JEFFERSON
*Richmond
Virginia*

A PPEALS to an excellent clientele who appreciate its unusual appointments - its splendor - its cuisine and its atmosphere of refinement.

Excellent Food Efficient Service
whether you dine

In the Golden Room
In the Palm Court
or

In your own apartment

Rooms at The Jefferson are moderately priced and may be had single or en suite.

THE JEFFERSON

*The Hotel of the South
with an appealing atmosphere*

Franklin at Jefferson and Adams Streets
WALLINGTON HARDY, Manager

Owning and Operating also
The Belvedere, at Baltimore - The Monticello, at Norfolk