



Air Glimpse of Sedgefield Inn

**Embowered Bridle Paths
Invite You to**

Sedgefield

An Old English hostelry is a central feature of the extensive country estate, where miles of enticing bridle paths winding through virgin forests of pine and hardwood extend a constant invitation to the lover of equitation.

A spirited horse - an exhilarating morning - a canter over the dew-diamonded bridle trails - the sunshine of the rolling Piedmont hills - and at the end of the ride the comfort and coziness of Sedgefield Inn.

For Reservations Address

Sedgefield Inn

Sedgefield—GREENSBORO, N. C.

The PINEHURST OUTLOOK

Vol. XXXI FEBRUARY 21, 1928 Number 12



CONTENTS

	Page
PHOTOS	2
PINEHURST PERSONALITIES	3
JAMES WELLS BARBER, PIONEER OF SANDHILLS, PASSES	4
SOUTHERN PINES GLIMPSES	5
PINEHURST HOTEL NOTES	6
WHAT THE FUTURE HOLDS FOR THE SANDHILLS	9
SEASON'S SPORTS PROGRAM	11-12



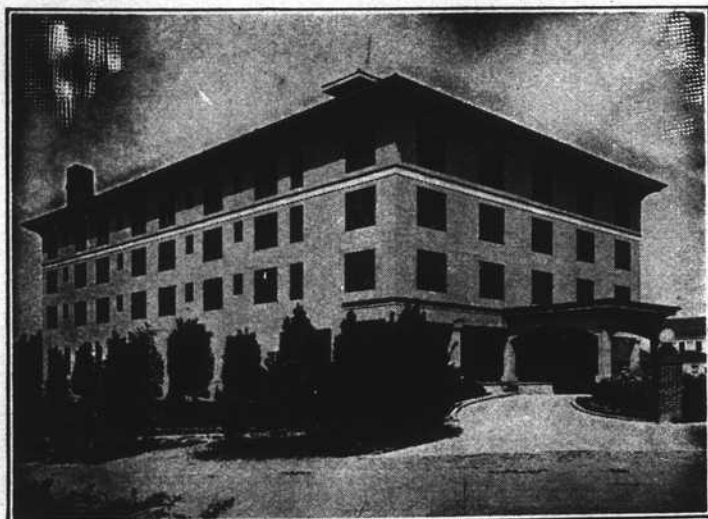
Communicate With

Charles P. Mason

MASON & GARDNER CO.

Sales Agents for

PINEHURST, Inc.



ERECTED IN 1923

The Manor

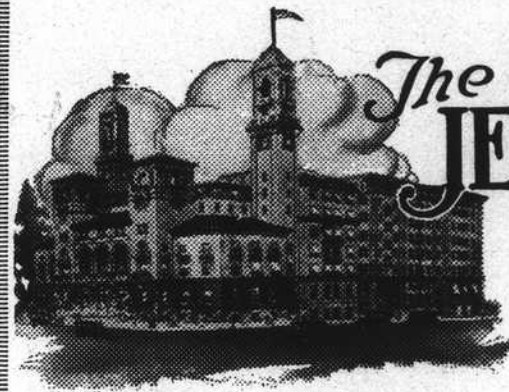
PINEHURST, NORTH CAROLINA

Open November to May

A new hotel, luxuriously furnished and catering to an exclusive clientele. All rooms with bath. Unexcelled cuisine. Elevator service. Telephone in all rooms.

*Pinehurst Country Club Privileges
Apply for Rates and Reservations*

MRS. E. C. BLISS
OWNER AND MANAGER



The JEFFERSON Richmond Virginia

A PPEALS to an excellent clientele who appreciates its unusual appointments - its splendor - its cuisine and its atmosphere of refinement.

Excellent Food Efficient Service
whether you dine

In the Golden Room
In the Palm Court
or

In your own apartment

Rooms at The Jefferson are moderately priced and may be had single or en suite.

THE JEFFERSON

*The Hotel of the South
with an appealing atmosphere*

Franklin at Jefferson and Adams Streets
WALLINGTON HARDY, Manager

Owning and Operating also
The Belvedere, at Baltimore - The Monticello, at Norfolk