

*Air Glimpse of Sedgefield Inn*

**Embowered Bridle Paths  
Invite You to**

## Sedgefield

An Old English hostelry is a central feature of the extensive country estate, where miles of enticing bridle paths winding through virgin forests of pine and hardwood extend a constant invitation to the lover of equitation.

A spirited horse - an exhilarating morning - a canter over the dew-diamonded bridle trails - the sunshine of the rolling Piedmont hills - and at the end of the ride the comfort and coziness of Sedgefield Inn.

*For Reservations Address*

## Sedgefield Inn

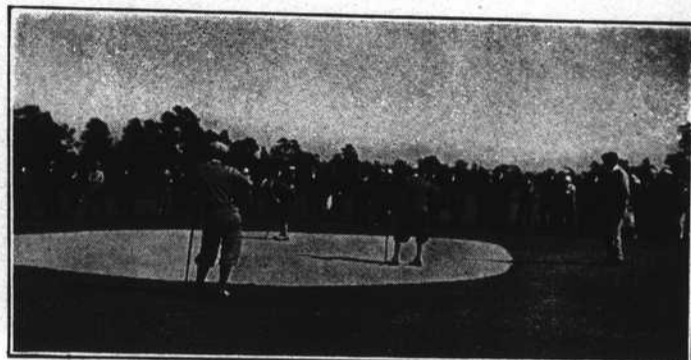
*Sedgefield—GREENSBORO, N. C.*

# The PINEHURST OUTLOOK

Vol. XXXI

March 20, 1928

Number 16



### CONTENTS

	Page
PHOTOS .....	2
PINEHURST PERSONALITIES .....	3
EDWIN SCOFIELD IS NEW TIN WHISTLES CHAMPION .....	4
SOUTHERN PINES—GLIMPSES .....	5
PINEHURST HOTEL NOTES .....	6
SOME CENSUS FIGURES .....	8
LINKINGS .....	9
MAGNOLIA GARDENS A SCENE OF BEAUTY .....	10
SEASON'S SPORTS PROGRAM .....	11-12



*Sales Agents for Following Property*

PINEHURST  
KNOLLWOOD

PINE NEEDLES

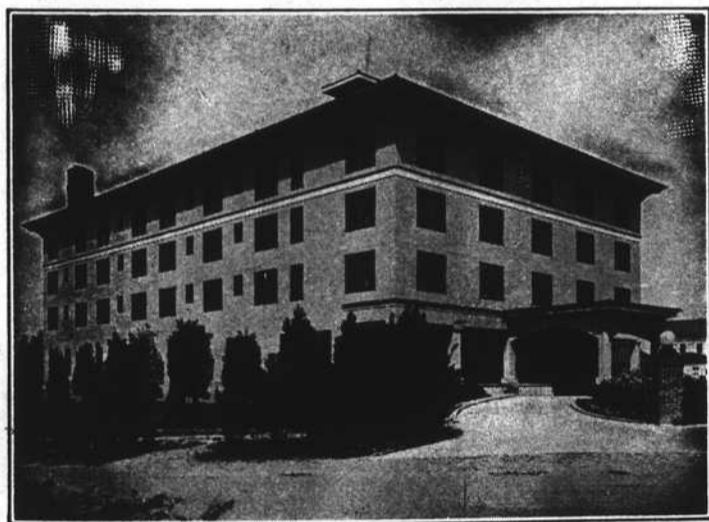
PINEHURST, INC.  
(Leonard Tufts)

JAMES BARBER ESTATE

JUDGE W. A. WAY  
AT  
KNOLLWOOD

See

**CHARLES P. MASON**  
at  
**Mason & Gardner Bldg.**  
**Pinehurst, N. C.**



ERECTED IN 1923

## The Manor

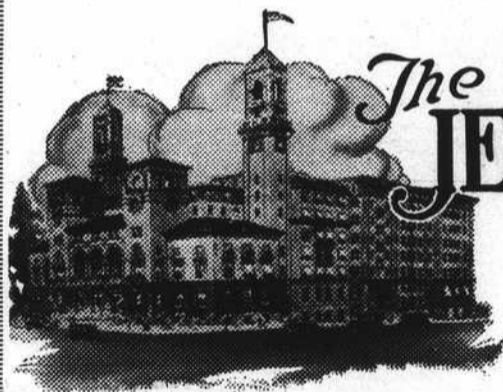
PINEHURST, NORTH CAROLINA

*Open November to May*

A new hotel, luxuriously furnished and catering to an exclusive clientele. All rooms with bath. Unexcelled cuisine. Elevator service. Telephone in all rooms.

*Pinehurst Country Club Privileges  
Apply for Rates and Reservations*

**MRS. E. C. BLISS**  
OWNER AND MANAGER



## The JEFFERSON Richmond Virginia

**A** PPEALS to an excellent clientele who appreciates its unusual appointments - its splendor - its cuisine and its atmosphere of refinement.

Excellent Food    Efficient Service  
whether you dine

In the Golden Room  
In the Palm Court  
or

In your own apartment

Rooms at The Jefferson are moderately priced and may be had single or en suite.

### THE JEFFERSON

*The Hotel of the South  
with an appealing atmosphere*

Franklin at Jefferson and Adams Streets  
WALLINGTON HARDY, Manager

Owning and Operating also  
The Belvedere, at Baltimore - The Monticello, at Norfolk