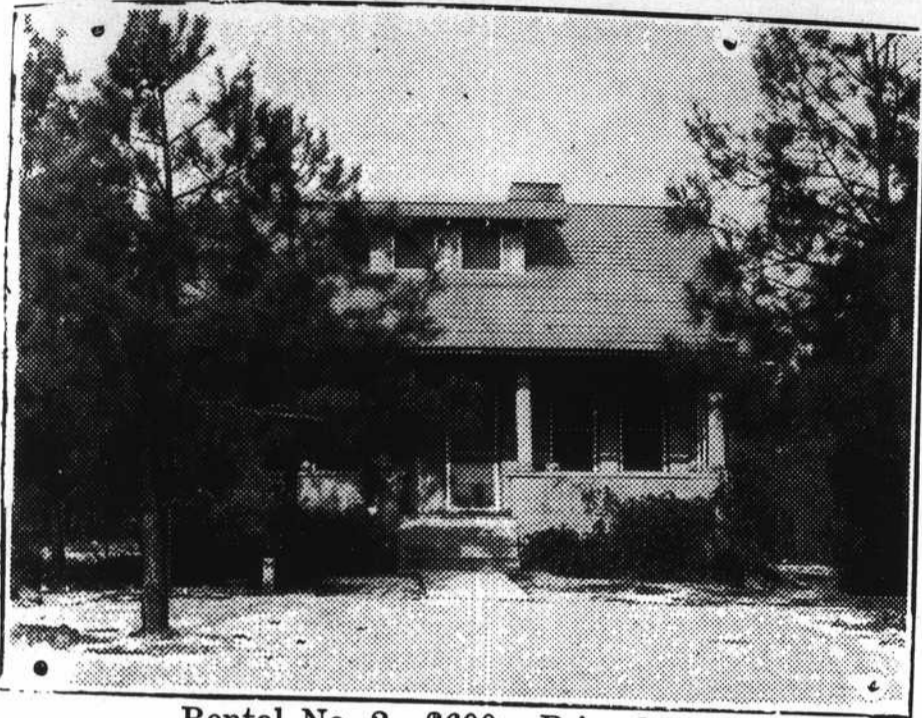


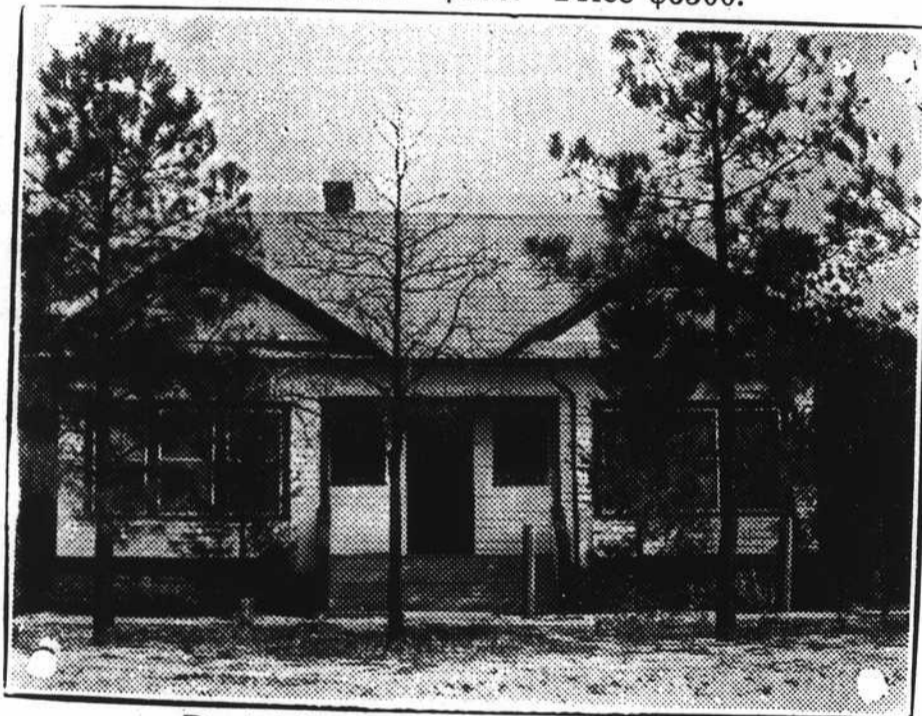
LOOK AND COMPARE

these houses and prices for next season.

Rental No. 2 and No. 4 \$600. Price \$6500. Rental No. 5, \$750. Price \$10000. Easy terms. Newly furnished and fine order.



Rental No. 2—\$600. Price \$6500.



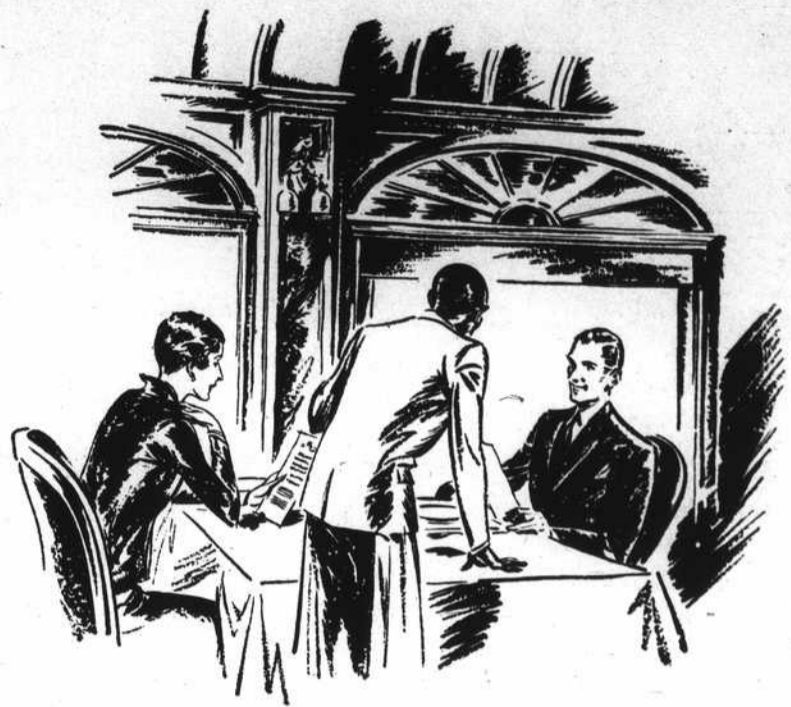
Rental No. 4—\$600. Price \$6500.



Rental No. 5—\$750. Price \$10000.

Building plots at low prices for discriminating people who love nature and a bird sanctuary.

CHARLES P. HEYWARD Piney Woods Estates
Southern Pines, N. C.



In dining-cars it's a demand
waiters often hear

There's a thrill to travel . . . a stimulation . . . a gaiety . . . new scenes and new faces . . . which you can heighten by drinking "Canada Dry." For within this emerald bottle sparkles a better, finer, purer beverage.

Its keen flavor brings more zest to your appetite before a meal in the dining-car. Its mellowness and its mildness go well with food. Its delicate and uniform carbonation tingles with goodness. This distinctive ginger ale is served on the famous crack trains everywhere.

Absolutely pure ingredients, expertly blended and balanced, give "Canada Dry" its marvelous flavor. High-quality Jamaica ginger makes it a real ginger ale. Order "Canada Dry" the next time you eat in a dining-car.

66 CANADA DRY 99

The Champagne of Ginger Ales

(c) 1929