

RESORT SECTION



ERECTED IN 1923

The Manor

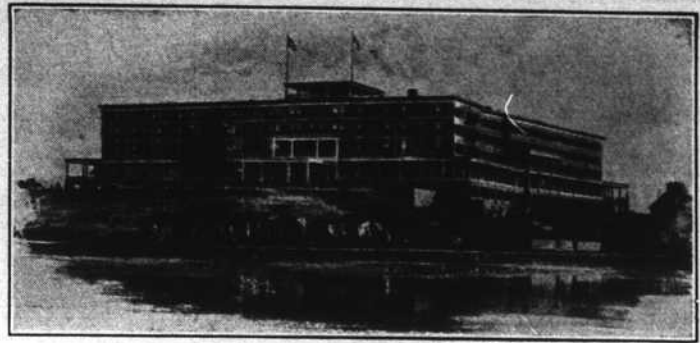
PINEHURST, NORTH CAROLINA

Open November to May

A luxuriously furnished hotel, catering to an exclusive clientele. All rooms with bath. Unexcelled cuisine. Elevator service. Telephone in all rooms. Grinnell Sprinkler System.

*Pinehurst Country Club Privileges
Apply for Rates and Reservations*

MRS. E. C. BLISS
OWNER AND MANAGER



THE MARSHALL HOUSE

YORK HARBOR, MAINE

70 miles from Boston—45 miles from Portland on the Atlantic Highway. Established 1870. New House erected 1917. Large summer resort hotel of brick, cement, fireproof constructions. Opens June 25.

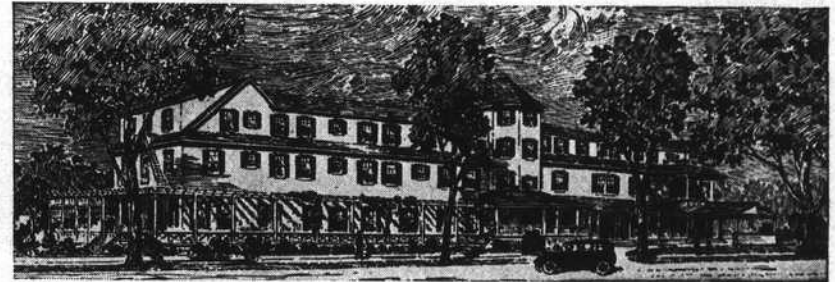
Sea Bathing Canoeing Boating
Golf Privileges at York Country Club, 27 holes
10 Tennis Courts

Concerts by Symphony Philharmonic, also special orchestra for dancing.

THE EMERSON and COTTAGES

Attractively Located, Shaded by Elms.
Near Bathing Beach, Ocean and River

Open June 1st into October Under Marshall House Management



**HIGHLAND PINES INN
AND COTTAGES**

ACCOMMODATIONS FOR 300 GUESTS
ALL OUTDOOR AMUSEMENTS
SIX MILES FROM PINEHURST
BEST OF EVERYTHING

Beautifully Illustrated Booklet by Request

CREAMER & TURNER
Proprietors

SOUTHERN PINES
North Carolina

**A Cottage for the Remainder
of the Season**

A Permanent Home in Which You
May Live all the Time

Building Sites in the Village
Rural Lands outside on big or
smaller scale

For information in this line, it
is worth while to consult with

H. B. EMERY
GENERAL OFFICE BUILDING
PINEHURST, N. C.

Mr. Emery has been in touch with the Sandhills from the early days and is familiar with locations, values, and everything you will be interested in knowing.