

Subscription Rates

One Year \$2.00
 Six Months \$1.00
 Three Months .75
 Single Copies 5c each

ROCKINGHAM Post-Dispatch

Rockingham
 Center of Mill Activity.
 Richmond County
 Agriculture & Peach Culture

VOL. 21 NO. 34

ROCKINGHAM, N. C., THURSDAY AFTERNOON, JULY 7, 1938

ISAAC S. LONDON, Editor and Proprietor

Comparison of the Estimated and Actual Majorities in July 2, 1938, Primary

The Sun Does Rise as Usual. Anyway, a Reading of the Estimated Majorities and the Actual is Interesting.

Much was said in the primary about the eight counties of the lower half of the district sticking together. Let's see how those eight counties voted: Union, Anson, Richmond, Scotland, Hoke, Lee, Moore and Montgomery gave Deane 16,584, to 9,373 for Burgin, or a majority in these eight counties of 7,211 for Deane.

The four upper counties—Davidson, Wilkes, Yadkin and Davie—gave Burgin 9,968 to 2,683 for Deane, or a majority of 7,285 for Burgin.

The Deane majority in the eight lower counties of 7,211 subtracted from the Burgin majority of 7,285 obtained in the four upper counties left Deane trailing by 74 votes. And it is the huge Democratic majorities of these lower eight counties that elects a Democratic Congressman in the November elections.

Well, just how badly did we come out in our pre-primary estimates; let's see. To begin with, Deane did not get 5000 majority. He did not get any majority, insofar as the first and present count shows. In fact, it seems that the majority is on the other foot—that Burgin has it.

But study our original figures. Give us credit for this much—we at least correctly gauged the counties each man would carry. We said Deane would carry eight, and he did. We said Burgin would carry four, and he did just that very thing.

But where we slipped up grievously was in the Davidson and Richmond votes. We estimated Davidson would cast about the same number of votes as was cast in the first primary—around 6700, and that Deane would get 1025; he got 962. But that county rolled up a huge vote—7900, and while Deane received about what we estimated, on the other hand Burgin got 6938 instead of our estimate of 5838.

In Richmond county we erred badly. We estimated there would be only 6400 cast and Deane would get 5575. As a matter of fact, 7121 were cast, and Deane received 5440. We missed Deane's vote only 135! But in the increased vote, Burgin got a total of 1681 instead of the 825 we estimated he would get.

Now for the brighter side of the picture. We predicted Deane would carry Lee county by 300 majority. He carried it by 306. We said he would carry Union by 100; he carried it by 130. We said Burgin would carry Yadkin by 100 majority—and Burgin did exactly that, to the letter, an even 100.

What is that Shakespeare, Solomon or Omar et cetera said about "casting the first stone?" No alibi is offered, but after all, how much closer could YOU have estimated than we did as regards Lee, Union and Yadkin?

We give here the prediction as to the majorities, then in next row is given the actual majority. Also is given our estimate as to how many votes would be cast, and on the last column is the actual number cast. Now read and digest these figures:

	Estimated total	Actual total
Anson	2500 estimated Deane majority	4100 actual Deane majority
Davidson	4600 estimated Burgin majority	6650 actual Burgin majority
Davie	350 estimated Burgin majority	800 actual Burgin majority
Hoke	100 estimated Deane majority	1500 actual Deane majority
Lee	300 estimated Deane majority	2950 actual Deane majority
Montgomery	700 estimated Deane majority	2500 actual Deane majority
Moore	700 estimated Deane majority	3300 actual Deane majority
Richmond	4800 estimated Deane majority	6400 actual Deane majority
Scotland	1200 estimated Deane majority	2800 actual Deane majority
Union	100 estimated Deane majority	5700 actual Deane majority
Wilkes	300 estimated Burgin majority	1900 actual Burgin majority
Yadkin	100 estimated Burgin majority	1100 actual Burgin majority
	40,000	38,609

LIST OF TEACHERS FOR CITY SCHOOL

One More Teacher Than Was Used Last Year. And There Are Five Replacements.

The following is the list of teachers for the Rockingham school district. There is one more teacher than was had last year. There are five replacements.

The fall term will open Sept. 5th. The schools operate on a nine months, 12th grade basis.

L. J. Bell is supt. of the city schools and of the county schools. Miss Kate Finley is principal of the High school, and Misses Bessie Terry and Frances O'Daniel are principals of the Elementary schools.

The following is the list:

Rockingham High School:

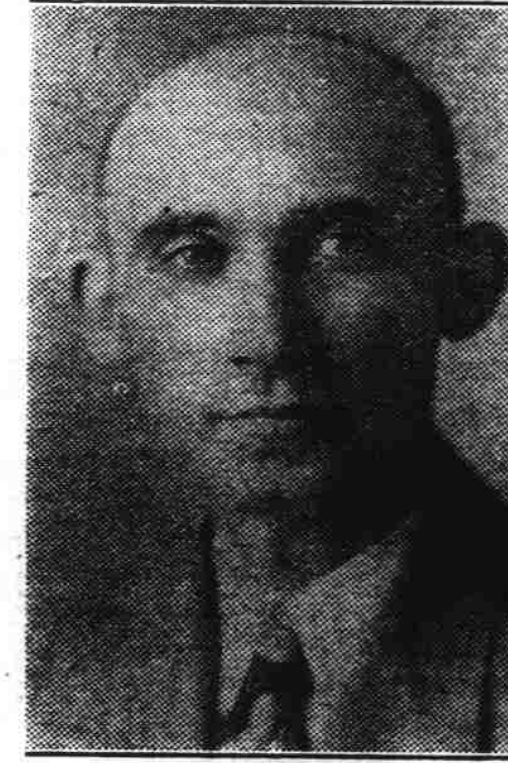
- Kate Finley, Principal
- Nita Andrews
- Alice Adams
- Mrs. Margaret O. Garrett
- Geraldine M. Fletcher
- Warren B. Beanson
- Rose Smith
- Mrs. John B. LeGwin
- Virginia G. Allen
- Sarah E. Boger
- John D. Farmer
- M. Hazel Meacham
- Edith L. Ivey
- Peggy Nickels
- Mrs. Lambe
- Wm. Foy Martin
- Mrs. Gertrude H. Pruitt
- R. T. Grant
- Ruby Tolbert
- Mrs. Sara J. McDaniel
- Helen Long
- Annie Howard Sisk
- Margaret J. Owen

Elementary Teachers:

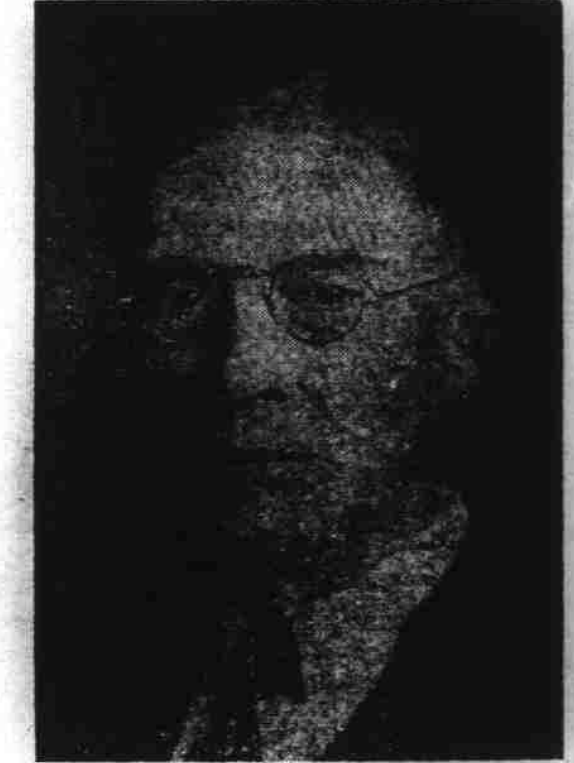
- Bessie Terry, Principal
- Alice Huckabee
- Mrs. Thelma B. Wheeler
- Beulah M. Welch

(Continued on page Four)

IN CLOSE BATTLE FOR CONGRESS



C. B. DEANE



W. O. BURGIN

Out of 38,608 votes cast in the July 2, 1938, Congressional primary for the 12 counties of this 8th district, W. O. Burgin received 19,341 to 19,267 for C. B. Deane of Richmond county—a majority for Burgin of just 74 votes. Both candidates have filed applications for recounts—in Richmond, Davidson, Montgomery and Union counties. The Richmond recount starts Friday morning, July 8th at Rockingham.

BURGIN LED DEANE IN SECOND PRIMARY BY 74 MAJORITY. RECOUNT DEMANDED IN DAVIDSON AND RICHMOND COUNTIES

Recount Starts at Courthouse Friday Morning for Congressional County Ballots, and for Senatorial in at Least Two Precincts.

In the July 2nd primary, a total of 7,121 votes were cast in Richmond county—the largest vote in the history of the county. And the various races were so close that only the final official canvass, and recount in certain instances, may determine the

winner.

The Board of Elections consisting of Isaac London, chairman, Carl McLean and Jesse Leigh, met at the Courthouse at 11 o'clock Tuesday, July 5th to tabulate the returns. Just before the Board was called to order, a written protest was handed the Chairman by Atty. A. A. Reaves on behalf of J. G. Jewell, candidate for the Senate, who apparently trails W. E. Harrison by 16 votes. This protest concerned the counting of certain absentees in Hamlet No. 1 and Rockingham No. 2 precincts, and demand was made for a recount as it affected the Senatorial vote. At noon a telegram was received by the Board from W. O. Burgin, from Lexington, demanding a recount of the entire county vote for Congress, and "especially requested and demanded that all votes cast for the respective candidates for Congress whether in the ballot box labeled as the Congressional ballot box or any tabulated, counted and included other box adjacent thereto, be in the returns." When this wire was read, a letter was presented the Board, written by C. B. Deane on July 4th, stating that in event Mr. Burgin asked for a recount, he (Deane) would offer no objections—would waive the required affidavits for special instances. Thereupon the Board ordered a recount of the Congressional boxes, this to begin Friday, July 8th, at 8:30 a. m. The candidates affected, or their authorized representatives and attorneys, were notified to be present for the recount.

Willie Diggs, who was apparently beaten by Ruben Pierce for Constable by just two votes, filed a demand July 6th for a recount of the Rockingham Nos. 1 and 2 boxes. This demand will be passed upon by the Board when it meets Friday morning. The Board granted the Jewell request for a recount for Hamlet No. 1 and Rockingham No. 2. The Board then adjourned to meet Friday morning to take up the deferred matters. Mr. Lee, member, left for Hamlet, and Messrs. London and McLean remained after adjournment and added up the totals for each candidate, as checked from the official returns from each precinct registrar, and publicly announced the result of that tabulation. The final official canvass will be made, and the returns certified to the State Board and to the Clerk of Court, upon completion (Continued on page Eight)

CONGRESSIONAL VOTE BY COUNTIES

Deane Carried 8 Counties, Burgin Had 4.

	Actual Vote		Majority	
	DEANE	BURGIN	DEANE	BURGIN
Anson	2274	1274	1000	
Davidson	962	6938		5976
Davie	386	889		503
Hoke	571	334	237	
Lee	1445	1139	306	
Montgomery	1005	738	267	
Moore	2094	1110	984	
Richmond	5440	1681	3759	
Scotland	1198	670	528	
Union	2557	2427	130	
Wilkes	835	1541		706
Yadkin	500	600		100
	19,267	19,341	7211	7285
			Burgin majority	74

Comparison of Votes in Both Primaries:

FIRST PRIMARY VOTE JUNE 4, 1938.	SECOND PRIMARY VOTE July 2, 1938
For Congress:	For Congress:
C. B. Deane 4502	C. B. Deane 5440
W. O. Burgin 213	W. O. Burgin 1681
State Senate:	State Senate:
J. G. Jewell 2414	J. G. Jewell 3441
W. E. Harrison 2220	W. E. Harrison 3457
House:	House:
R. T. McNair 3174	R. T. McNair 3515
Thomas H. Leath 2458	Thomas H. Leath 3481
Recorder:	Recorder:
W. H. Covington 2402	W. H. Covington 2623
H. F. Brown 1746	H. F. Brown 2924
Solicitor:	Solicitor:
Ammie A. Webb 2393	Ammie A. Webb 2707
Thomas L. Parsons 1706	Thomas L. Parsons 2812
Sheriff:	Sheriff:
W. E. McNair 2998	W. E. McNair 3346
E. B. Morse 2313	E. B. Morse 3765
County Commissioner:	County Commissioner:
James W. Hamer 2393	James W. Hamer 3720
L. F. McCaskill 1837	L. F. McCaskill 2904
Constable:	Constable:
Wolf Pit Township:	Wolf Pit Township:
Mack Wallace 799	Mack Wallace 1394
Clifford Dutton 334	Clifford Dutton 824
Rockingham Township:	Rockingham Township:
Ruben Pierce 705	Ruben Pierce 1158
Willie Diggs 531	Willie Diggs 1156

SOFT BALL LEAGUE

The Baptists are now in the lead in the town four-team league, as well as having won the first half of the split season. The Independents are second, the Civitans and Presbyterians tied for the cellar.

Standing through July 6th:

	won	lost
Baptists	5	2
Independents	4	3
Presbyterians	2	4
Civitans	2	4

The schedule of games is:

- July 7—Indep. vs Baptists
- July 8—Presby. vs Civitans
- July 11—Civitans vs Indep.
- July 12—Presby. vs Baptists
- July 14—Civitans vs Baptists
- July 15—Presby. vs Indep.
- July 18—Indep. vs Civitans
- July 19—Baptists vs Presby.
- July 21—Baptists vs Indep.
- July 22—Civitans vs Indep.

BANK STATEMENT

The Statement of the Farmers Bank is in this issue.

TOBACCO INFORMATION

O. O. Dukes, County Agent, states that all Richmond County tobacco growers who did not furnish tobacco information to the Committee at Rockingham on Tuesday or at Ellerbe on Wednesday of this week, should furnish this to the County Agent's office AT ONCE.

Marketing cards cannot be issued until certain information is received from each tobacco grower.

UNEMPLOYMENT COMPENSATION EXPLAINED HERE TONIGHT

Courthouse at 8 o'clock.

Chas. U. Harris, chief field examiner for the Unemployment Compensation department, will speak at the Courthouse tonight, July 7th, at 8 o'clock, in explanation of the work and its administration. The public is cordially invited.

Renew that subscrip't

POSTAL RECEIPTS

Receipts at the Rockingham postoffice for the first six months of this year totaled \$11,779.83 as compared with \$11,592.89 for the first six months of 1937. This is a gain of \$186.69.

Business for this past quarter showed a bigger gain—\$6,432.03 from April 1st to July 1st as compared with \$5,803.52 for the same three months of last year—a gain of \$628.51.

SAW SHIRLEY TEMPLE

Mr. and Mrs. Dan Wicker, Mrs. O. W. McMillan and Grace Farlow of Hamlet, and Lois Brown of Star, returned July 3rd from a ten days' auto trip to northern points. While in Washington they happened to be on the White House lawn when little Shirley Temple came to see the President, and they "glimpsed" her.

CIVITAN MEETING TONIGHT

Regular meeting of the Civitan Club tonight, July 7th, at 7:30.