

THE FOUNTAIN AT THE PANAMA-PACIFIC INTERNATIONAL EXPOSITION THAT SYMBOLIZES THE BUILDING OF THE PANAMA CANAL



The labor that went into the building of the Panama canal is symbolized in the Fountain of Energy, by A. Stirling Calder. This heroic sculpture stands in the center lagoon of the three lagoons of the South Gardens and faces the main entrance gates. The waters were first released on opening day, February 20, coincidentally with the opening of the portals of the exhibit palace and by the same means, the electric spark transmitted across the continent when President Woodrow Wilson opened the great exposition at San Francisco by wireless.

GLORIOUS INAUGURATION OF WORLD'S GREATEST INTERNATIONAL CELEBRATION ASSURES CONTINUED SUCCESS

WITH an attendance for the first week greater than the combined attendance for the same period of the world's expositions at Chicago and St. Louis, the Panama-Pacific International exposition at San Francisco has started on a career that the most conservative judgments predict will break all records for exposition success.

The exposition opened on February 20, 1915, per cent complete simultaneously, and opened in an attendance of one quarter of a million people. From every state of the United States and from the nations of the world came critical visitors to pass on the merits of the celebration and have been so widely lauded. They found nothing to criticize. Every claim made by San Francisco and the exposition was justified. It is safe to say that not a single visitor went away disappointed. The result has been that the government by word of mouth, and by letters home and to friends—the most powerful form of advertisement—has been given the exposition. In consequence the transportation companies report a constantly increasing booking for travel to San Francisco both by land and water.

Exceptionally low rates have been given by the transportation companies from all points within the United States to San Francisco, offering many people an opportunity that could not otherwise be taken of combining a pleasure journey to the exposition with a sightseeing tour through California and the West.

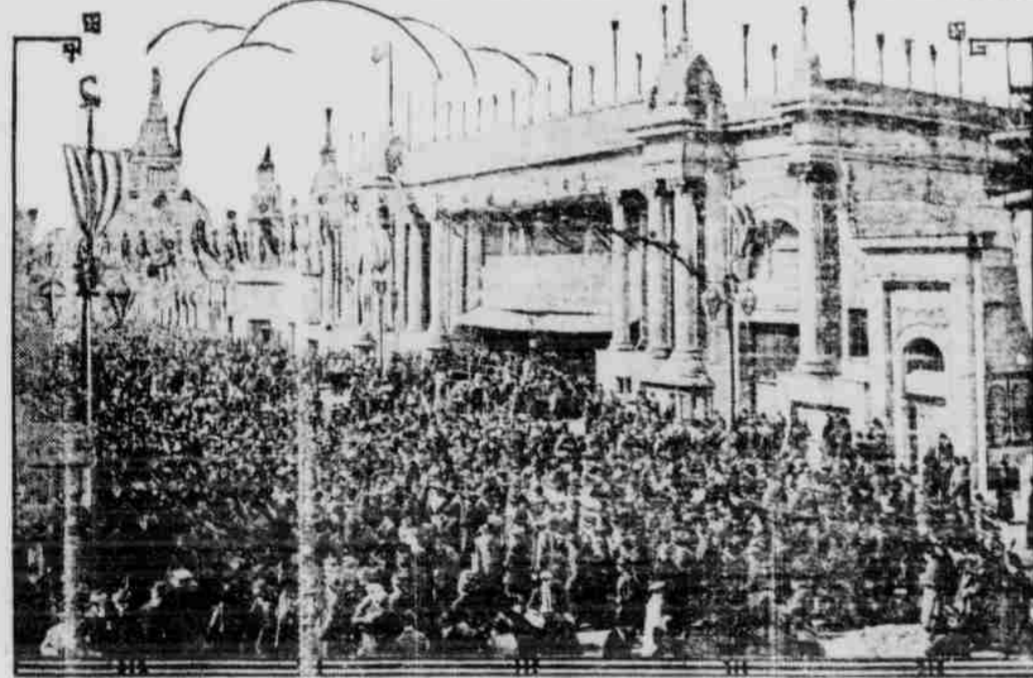
A feature of the exposition that has called for universal comment is the fact that every exhibit, every exhibit capable of operation by steam or electricity being shown in motion.

A flood of inquiries concerning rates and hotel accommodations has been received by the information bureau of the exposition since the news of its successful opening was flashed around the world, all such inquiries being given prompt attention. San Francisco and California are fulfilling their best duties and living up to the reputation the West has always had for hospitable treatment for the stranger.

HANDSOME SIXTY-PAGE BOOK ON THE PANAMA-PACIFIC INTERNATIONAL EXPOSITION SENT FREE OF CHARGE TO ANY ADDRESS.

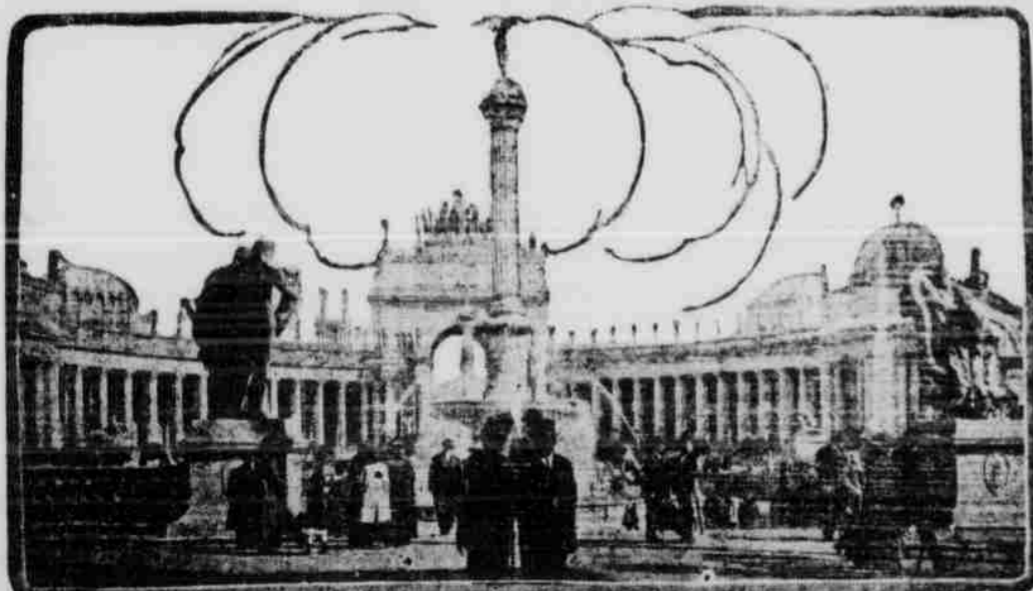
Those who are interested in this great exposition may obtain free of charge a handsomely illustrated book of sixty pages, reproducing the exhibit palaces in their natural colors and giving essential data about the exposition, San Francisco, California and the Panama canal. To obtain this book send a letter to the Manager, Bureau of Publication, Panama-Pacific International Exposition Grounds, San Francisco, Calif.

THE "ZONE," THE PLAYGROUND OF THE PEOPLE OF THE WORLD AT THE PANAMA-PACIFIC INTERNATIONAL EXPOSITION



Through the center of the Zone, the amusement section at the Panama-Pacific International exposition at San Francisco, runs a broad avenue three thousand feet in length. It is not unusual for this entire avenue to be jammed with entertainment seekers who are busy patronizing the one hundred concessions on the Zone. An exact reproduction of the Panama canal is one of the popular and instructive features, there being a constant line both day and night of people eager to see the workings of the miniature canal. The premier showmen of America have assembled here their finest offerings of amusement, education and instruction.

THE MIGHTY COURT OF THE UNIVERSE, THE HUB OF THE ARCHITECTURAL SCHEME AT THE PANAMA-PACIFIC INTERNATIONAL EXPOSITION



All visitors to the Panama-Pacific International exposition at San Francisco at some time during their stay at the exposition make their pilgrimage through the Court of the Universe. This is the largest court on the grounds and is the central radiating unit of the architectural and ground plans. Noble sculptured groups embellish it, the two Homeric groups—the Nations of the East and the Nations of the West—surmounting the giant arches at the east and west portals. By night the beauty of the court is enhanced by the flood lighting effects.

Afternoon Gown of Blue Taffeta



RATHER difficult to picture is this pretty gown for afternoon wear, which is cut on distinctly original lines. It is for the young and slender wearer, and flows about her figure in loose-hanging and ever-changing folds. It is a bright blue, something deeper than turquoise, and is made in two pieces. There is a short underskirt, only moderately wide, which is cut to flare at the bottom and is ankle length. A full, flaring tunic is attached to a short jacket; together they achieve a coat effect in which the waist line is entirely neglected. The bodice fastens at one side with round covered buttons made of the taffeta.

There is a moderately high rolling collar of the silk, with a collar of dainty hemstitched batiste overlaid at the back. The silk cuffs are almost covered with hemstitched cuffs of batiste. Although the skirt and overgarment are two distinctly separate pieces they are both attached to the same plain under-odico so that the dress is put on all together. The neck is finished with a covered silk cord terminating in small silk-covered balls.

One of the larger hats with wide, flat, transparent brims and flower trimmed, would be a better choice in millinery to be worn with this afternoon gown than the small tailored turban shown in the picture. This is a season of beautiful colors in flower and fruit-trimmed hats to correspond with the daintiness and sprightliness of taffeta gowns, or those of colored

net or the likewise gowns of midsummer. Plain or somber or severe hats do not fit in with the scheme of things, except when the gown is tailored, and it is the semitailored gown which is holding the close attention, just now, of those who have learned to be discriminating.

JULIA BOTTOMLEY.

Japanese Parasols.

From present indications the flat Japanese types of parasols will play an unusually strong part in this season's parasol demand. Many novelties of this character are being offered. Some of the richest have dark borders, with bars and there a delicate bit of hand-embroidery in gold. Acute, odd-looking velvet birds are applied over the inside surface of the parasol. This idea is effective when developed in orange and blue tones, says Dry Goods Economist. Handles are extremely long and in most instances harmonize in color and design with the ferrule end.

Fanciful Names.

Some of the new silk novelties resemble chamoise and have fanciful names. These were all made in America. There is a very attractive sand-colored shade that is named "Palm Beach sand," others are "Delaware peach," "Arizona silver," a lovely shade of gray, "Oregon green," an olive shade, "Rocky mountain blue," "Newport tan," "Gettysburg gray," and "Piping rock," a very delicate gray.

The HOME BEAUTIFUL
Flowers and Shrubbery
Their Care and Cultivation



Field Daisies Can Be Grown in the Garden and by Cultivation Become Much More Beautiful Than in Their Native State.

DAISIES ALL YEAR ROUND

In the mild climate of California and some of the southern states, daisies bloom all the year around. In California these flowers grow very much larger than those of the East, as do all Pacific coast flowers; but they seem to lack brilliancy, and to many persons are not as satisfactory.

In the cooler climates, of course, it is impossible to keep daisies blooming every month; but by planting different varieties some of them may be kept blooming the entire summer. The daisy is really not a domesticated flower,

as a great many low-growing wild flowers are called daisies. Many varieties are classed as weeds.

In fact, the ox-eyed daisy which is plentiful all through New England and some of the northern states, is called white-weed.

The chrysanthemum and wild asters are called daisies and really belong to the same family.

While it would not be possible perhaps to have a daisy hedge in bloom all the year, still by planting the various species of daisies, chrysanthemums and asters, some bloom could be had from April to November in all except the extreme northern states.

Possible Good in Accident.

A young man who, having run up a bill of \$100, which were considerably beyond his means to pay, was much pursued by collectors. He, however, had the direction of a true Miraculous and did not allow himself to be put out by their attentions. One day a collector came to his house, and in mounting the front steps slipped and broke his arm. The young spendthrift, who was looking out of the window at the time, remarked calmly: "Well, I hope that will be a lesson to them to keep away from me for a while."

What About Your Renewal?

500 Cedar Posts FOR SALE
In the next 10 Days. Apply to
W. F. Horner
Rosemary, N. C.

NOTICE
SIX ROOM HOUSE and Lot on Hamilton Street for Sale or Rent. Small Cash Payment Down and long Credit. Apply to
W. R. DeLOATCH
Roanoke Rapids, N. C.

Some Reasons Why You Can Save Money on That

EASTER SUIT

We sell only for cash. That means you pay for your suit without paying some of the cost of the suit the other fellow bought and did not pay for.

You save the money we do not pay the book-keeper we haven't got.

You get the benefit of the sacrifices in prices we are making to get our clothing introduced.

The proof of the pudding is in the eating. Call at our store and let us show you the hundreds of beautiful fabrics we can sell you at prices ranging from \$8.00 to \$30.00.

Every garment is custom tailor-made. Every garment is guaranteed.

Rose & Hill Tailoring Co.

Nothing But Men's Clothing
Moore & King Bldg. ROSEMARY, N. C.

New Store For Rent

Located on Roanoke Avenue, Second Door from First National Bank Building -- one of the Best Locations in Roanoke Rapids. New Building, Modern Show Windows, Ample Room. Apply to

W. F. HORNER
Rosemary, N. C.

Roanoke Rapids Power Company

Roanoke Rapids, N. C.
Save Your Money by Buying a Building Lot on EASY PAYMENTS
Electrical Power for all Purposes at Low Rates
Do You Use an ELECTRICAL IRON? Try One and be Convinced.

Get Those

Easter "Glad Rags"

From Us

Just Received

The Latest Thing in Oxfords

For Men and Women

Men's Straw and Panama Hats

Dress Goods

The prettiest line in Town
Anything for the Easter dresses
Any material - any shade.

Special Cash Discount of 10 per cent on all High Top Shoes in Stock

The Patterson Store Co.
The Leading Department Store