

Collars and Combs and Other Accessories



HERE is a collar, made of sheer batiste and a very narrow fancy edging, that will interest every woman who appreciates the value of such dainty and easily made accessories. Aside from their becomingness they protect the bodice at the neck, and they cost next to nothing. This one is merely a graduated flounce of the batiste, to which three rows of braid have been stitched, mounted to a straight band. This band is basted into the neck of the bodice. At the front the collar is sewed to the band without fullness, but it is gathered at the sides and back and stays of with small wires which are almost entirely concealed by the gathering of the batiste. Collars of the sheerest laces are made in the same way. They are somewhat narrower and are gathered along their entire length into a narrow band. The small staywires hold them in the right pose about the neck. One of those long shell combs brightened with rhinestones set in rows that follow and outline its nat-

ural, is shown in the picture. These are very popular, thrust in the collar at any position or angle that becomes the wearer.

A pretty tie of narrow ribbon set with lot ornaments is another little accessory that gives finish to the plainest of toilets. Imitation grosgrain or velvet ribbons are used for these ties, and they are fastened with snap fasteners under an ornament in lieu of a bow.

JULIA BOTTOMLEY.

Pope's Vault

The body of Pope Pius X, who died last summer, has been placed in the crypt beneath St. Peter's, in Rome, one of the most celebrated burial vaults in the world.

A portion of the crypt was in existence long before the erection of the present cathedral, having formed part of an ancient church. The flooring in the passages, some of which are little more than six feet in height, has been worn by the feet of thousands of persons who yearly visit the place.

The HOME BEAUTIFUL  
Flowers and Shrubbery—  
Their Care and Cultivation.



Before the work of spring commences, look over the grounds and make some beauty spots—Dead trees can be cut partially down and made to form artistic and substantial trellises for either rose bushes or vines.

BEAUTIFYING THE HOME

Every country home may be beautiful, but in order to have it so there must be cooperation by the whole family. From the "gude mon" down to the tiniest tot, there should be responsibilities shouldered, and none should be allowed to shirk their part of the program. Stock must be fenced off the yard

grass plot, chickens should not be allowed about the house; walks of some kind—boards, stones, rocks—should define the pathways, and the lawn should be raked and scraped until level, when blue grass should be encouraged to grow. Shrubbery, if only the native bushes, and herbaceous perennials should be set out along the lines and edges. Care should be exercised to keep them growing.

Learn to Forget.

Caesar was so ready to forget that even Cleopatra, who was by no means a constant friend to him, relates, as singular proof of his noble heart, that he never used to forget anything except the wrong done to him. Indeed, in pardon is a most beautiful revenge; but to forget is still more beautiful—Petraarch.

Too Short an Acquaintance.

"Of course, I don't wish to put any obstacle in the way of your getting married," a mistress said to her servant, "but I wish it were possible for you to postpone it until I get another maid." "Well, ma'am," Mary Ann replied, "I hardly think I know 'im well enough to ask 'im to put it off."—London Standard.

Roanoke Rapids Power Company

Roanoke Rapids, N. C.

Save Your Money by Buying a Building Lot on EASY PAYMENTS

Electrical Power for all Purposes at Low Rates

Do You Use an ELECTRICAL IRON? Try One and be Convinced.

Rules and Regulations Governing the Roanoke Valley League for the Season of 1915.

Eligibility

Any white male resident of Roanoke Rapids Township is eligible to participate in the championship games of the League, provided:

First: He has been a bona fide resident of the community for at least thirty days previous to playing in any championship game, and shall maintain a continuous residence in the community in good faith thereafter, or as long as he shall participate in such championship games; but exception is hereby made from this rule in the case of bona fide residents of the community who may now be away at school and who may spend the summer here with their parents. Players covered under this clause are eligible to participate on arrival and registration.

Second: He has submitted an application in writing on form provided for that purpose, requesting registration in the league. This form must be legibly filled out in ink and must give age of player, residence, occupation, by whom employed, length of residence, and must be signed by player, endorsed by the Governor of the team for which he makes application and approved by the President of the League, or in his absence by the Vice President. This application must be submitted to the President in proper form before Saturday noon in order to render the player eligible to participate in the game on that day.

Remuneration

After every three playing days, or after six games have been played, twenty five per cent of the net earnings of the league shall be divided among the four teams and handed to each of the four governors to be given to their respective teams; such moneys to be expended subject to the orders of the captains of the teams.

Direct remuneration will not be given to players and the governors of the league have resolved that no player shall participate in the league games for remuneration.

Change of Team

No player shall change from one team to another without having been released by the governor of his team in writing to the President and the President may, or may not, at his discretion, assign such released player to another team upon application by the Governor of such team for such release of player.

Number of Players

No team shall have registered more than eighteen men at one time. Vacancies may be filled at any time by the registration in manner described of available eligible men.

By-Laws

Spaulding's Official League Rules for this year constitute the by-laws of the league, with the provision that no money in the way of fines shall be exacted from the players by the umpire.

Power of Umpire

The umpire is to have full charge of the games to conduct them as he sees fit, subject to the Spaulding Official Rules, with the one exception above noted.

Practice Days

Practice days for each team, giving them sole and exclusive use of the League grounds on such days, are as follows: Rosemary, Tuesdays, Roanoke Mills, Wednesdays, Roanoke Rapids, Thursdays, Patterson Mills, Fridays. (These days were drawn by lot by the several captains.)

Schedule

The schedule shall consist of fifteen games for each team. It shall begin on May 1, 1915, and two games shall be played on that Saturday and on each Saturday thereafter until the schedule is completed. Postponed games are to be played on Saturdays succeeding after the close of the schedule and exact dates for these postponed games are to be determined by the Board of Governors.

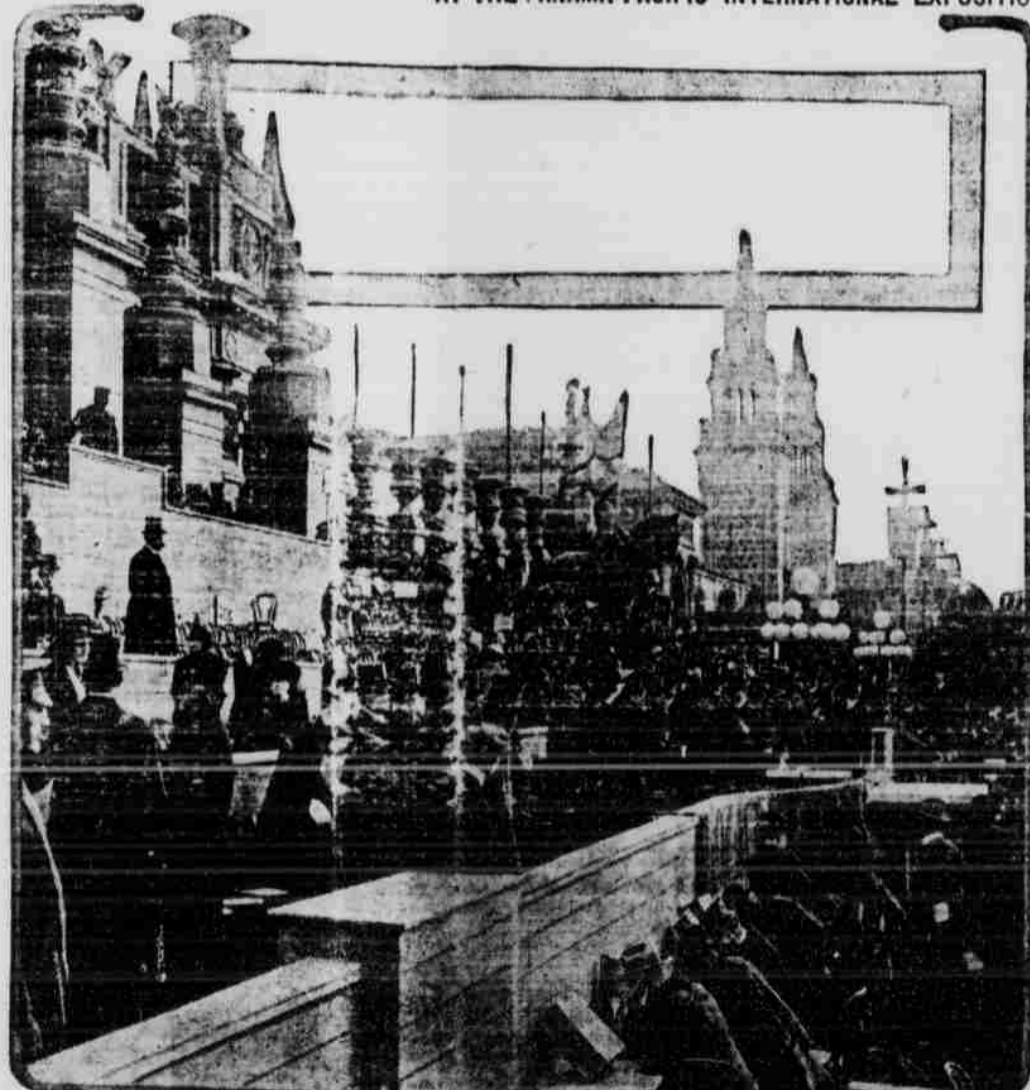
Time of Games

The first game each Saturday shall be called by the umpire at three o'clock and the second game shall be called at fifteen minutes after the end of the first game, or otherwise, at the discretion of the umpire. The Rosemary team shall play the last game on each Saturday of the regular league schedule.

Adopted by Board of Governors, March 26 and 27, 1915.

? Have You Turned in ?  
Your Renewal ?

DURING A LULL IN THE OPENING DAY CEREMONIES  
AT THE PANAMA-PACIFIC INTERNATIONAL EXPOSITION



The Panama-Pacific International exposition was opened by a wireless spark, dispatched by President Woodrow Wilson, Washington, and caught on the tendrils of a wireless aerial on the lofty Tower of Jewels at the exposition. Instantly the power was released in the mighty Palace of Machinery and the portals of the exhibit palaces opened. The scene is on the grand stand after the ceremonies had ended, Secretary of the Interior Franklin K. Lane, Gov. Hiram Johnson of California, Mayor James Rolph, Jr., of San Francisco, President C. C. Moore of the exposition and a notable group of visiting dignitaries being seen in animated discussion of the epochal event. In the press box the correspondents are seen flashing to the world the news that the exposition had opened.

The Man Who Succeeds  
at Baseball

Is the Man Who Can  
Make a Timely Hit

BANG!

In life it still holds good. When the opportunity comes you must have money in the bank in order to realize on your chance.

Start NOW with the

Rosemary Banking and  
Trust Company

New Store For Rent

Located on Roanoke Avenue, Second Door from First National Bank Building -- one of the Best Locations in Roanoke Rapids. New Building, Modern Show Windows, Ample Room. Apply to

W. F. HORNER  
Rosemary, N. C.

Our Special Clearing Up  
SALE

of Ladies and Gents Fine Clothing, Shoes, Hats, Boys' Suits, Men's Pants, Ladies Dress Goods, Hats, Etc.

The Big Sale will open Saturday, April 3rd, and close Saturday, April 10th.

Drop in and look over our line, we can save you big money. Goods must go regardless of cost. Don't fail to come in give us a trial. Next to wholesale grocery.

M. SALOUM  
ROSEMARY, N. C.

Spring Specials

A few articles mentioned - just selected at random from our big stock of New SPRING GOODS.

Men's Straw Hats

Palm Beach Suits  
Shirts - Prettiest we've seen.  
Canvas and Rubber Soled Shoes  
Half Shoes - Latest Styles.

Ladies House Dresses

Middy Blouses  
Canvas and Rubber Soled Shoes  
Hosiery - Silk and Lisle  
in the new shades  
Dress Goods of Every Description  
Crepes, Silks, Crepe de Chines  
Voiles, Dress Gingham, Percales  
We know you'll say it is  
The most attractive line of  
Dress Goods you've seen yet.

We'll Appreciate Your Looking Them Over

The L. G. SHELL CO., Inc.  
The Store of Quality

We can fit your Sewing Machine [any make] with  
NEEDLES, BOBBINS, or SHUTTLES