

Has More Than Double The Circulation of Any Weekly Paper in The Tenth Congressional District, Comprising Thirteen Large Counties.



Has More Than Double The Circulation of Any Weekly Paper in The Tenth Congressional District, Comprising Thirteen Large Counties.

CLOSING OF THE GRADED SCHOOL.

Exercises Unusually Interesting And Largely Attended.

MUCH FAVORABLE COMMENT

The Court Filled To Its Entire Capacity During The Series Of Entertainments—Hon. C. R. Hoey Delivers The Annual Address.

The annual exercises of the Rutherfordton graded school were held in the court house last week, under the direction and management of Mrs. W. F. Rucker, assisted by Mrs. Clara Geer, Miss Minnie Daniel and Miss Mollie Harton, of the faculty.



HON. CLYDE R. HOEY.

capacity at all times. The whole affair seems to have met the hearty approval of the community; the interest manifested by the public was indeed gratifying to those whom the burden of the exercises had fallen, and it is not doubted that such manifestation betokened an increased enthusiasm in this community relative to higher education.

Mr. W. F. Rucker was master of ceremonies and made all announcements during the exercises.

The first entertainment was opened on Wednesday evening by a farce, "A Trip to Europe," presented by a number of the graded children. It was, however, the second number on the program that added the great pleasure to the evening, brought down the house.

This was a song entitled, "A Paper of Pins," sung by little Edna Harris and Master Hugh Carpenter to the general amusement of the audience. The last number was "The Fairy Festival," and the evening closed.

At 11 o'clock Thursday morning, the exercises were opened with prayer by the Rev. J. D. Arnold, of the Methodist church. Then the school sang "America," after which Mr. Matt McBrayer introduced Hon. Clyde R. Hoey, of Shelby, the greater of the occasion.

Mr. Hoey opened his discourse gracefully with a few pleasantries, after which he announced that his subject was "The Dreamer." He treated his subject in a masterly way, his method indicating much thought and deliberation as well as power of argument and oratory.

He had no trouble in getting hold of his audience directly, and it was easily discernible that every one was in full sympathy with the speaker and his line of thought. His discourse at times sparkled with wit and humor, at times serious argument and logic caught the attention of the audience and held them in his power as he drove each point to its final determination with eloquence and power.

lines of study were then presented to the ninth grade of the school by Capt. W. T. R. Bell, County Superintendent of Public Instruction. The presentation speech was terse and to the point, yet it was eloquent and in fine taste. The speaker tried earnestly to impress upon the children his idea of proficiency in knowledge and the priceless worth of greater and higher education.

The entertainment Thursday evening was the last of the series. It was not expected that the last night would be so well attended, on account of an admission being charged to defray expenses and purchase books for the school library, but to the agreeable surprise of all there was no falling off in the attendance. On this night, too, as well as that of Wednesday, the house was crowded, many standing during the whole performance.

The program was opened by the presentation of "Cindarella," a light but attractive little play of the operetta type. No time or attention had been spared in preparation for the production of this number. Children of grades, from the highest to the lowest, were required for its rendition. The utmost care had been given to the training and costume of each character, as could be plainly seen by the grace and accuracy with which each part was performed.

The report of the principal of the school was then read by Hon. W. F. Rucker. For its contents the reader is referred below.

The last number of the evening was a song familiar to all opera-going people, entitled, "Tell Me Pretty Maiden," from the popular opera, "Floradora." This was sung, embellished by pantomimic exercises, by eighteen young ladies and gentlemen in evening dress. This number scored heavily, the applause being so loud and continuous as to force a repetition.

Since the closing of the series of entertainments, there has been much favorable comment, and from what can be gathered from public opinion, it is safe to say that the entertainments were the best of their kind ever given in the town. There is an increasing interest in educational matters in Rutherfordton, and there is predicted for the graded school a brighter prospect for the coming term.

The success of the school this year has been due to several causes co-operating together for the accomplishment of a satisfactory and successful result. These are: (1) The experience of the principal in her profession and her proficiency and ability to govern, select and direct the courses of study.

(2) The competency of and the valuable services so willingly and faithfully rendered by the corps of assistant teachers employed. (3) The sympathy and co-operation of the board of trustees and the public at large concerning the advancement of the best interests of the school; and to these may be added the kindness and help rendered by our capable Superintendent of Schools. Should this state of affairs continue to exist, it will not be long until Rutherfordton will have a graded school second to none in the State in point of thoroughness of work and results.

REPORT OF THE PRINCIPAL. I want to thank all the good people of Rutherfordton for their help and co-operation. We especially indebted to Messrs. Horace Carpenter and George Biggerstaff. I want also to thank my teachers for their work. I also wish to thank Miss Hazel Fisher and Mrs. R. S. Eaves for assisting us with the music during the closing exercises. We are indebted to Messrs. Powers and Griffin for the stage, to Mr. Earl Justice for bringing in the piano for us, to Mr. Arthur Smith for assisting the marshals in putting up the curtain and helping in other ways with the stage, and we return to them our thanks for their kindness. We thank you all for your presence, sympathy and encouragement.

The enrollment for the school is as follows: Enrollment for public school, 192; the average attendance 85 per cent. The enrollment for the graded school, is 201; the average attendance 89 per cent. Total enrollment 224; average attendance for the year, 87.5 per cent.

In addition to those who will receive medals, the following deserve honorable mention for both deportment and class standing: Miss Harton's room—First grade, Misses May Bell, Sarah Dickerson, Rebecca Carpenter, Ruth Levi, Gladys Lewis, Lois Goforth and Master Hugh Walker; second grade, Georgie Biggerstaff, Preston Lewis, Sylvia Levi and Agnes McBrayer; third grade, Willie Southern, Annie Craton, Marie Reid and Winnie Keeter.

(Continued on another page.)

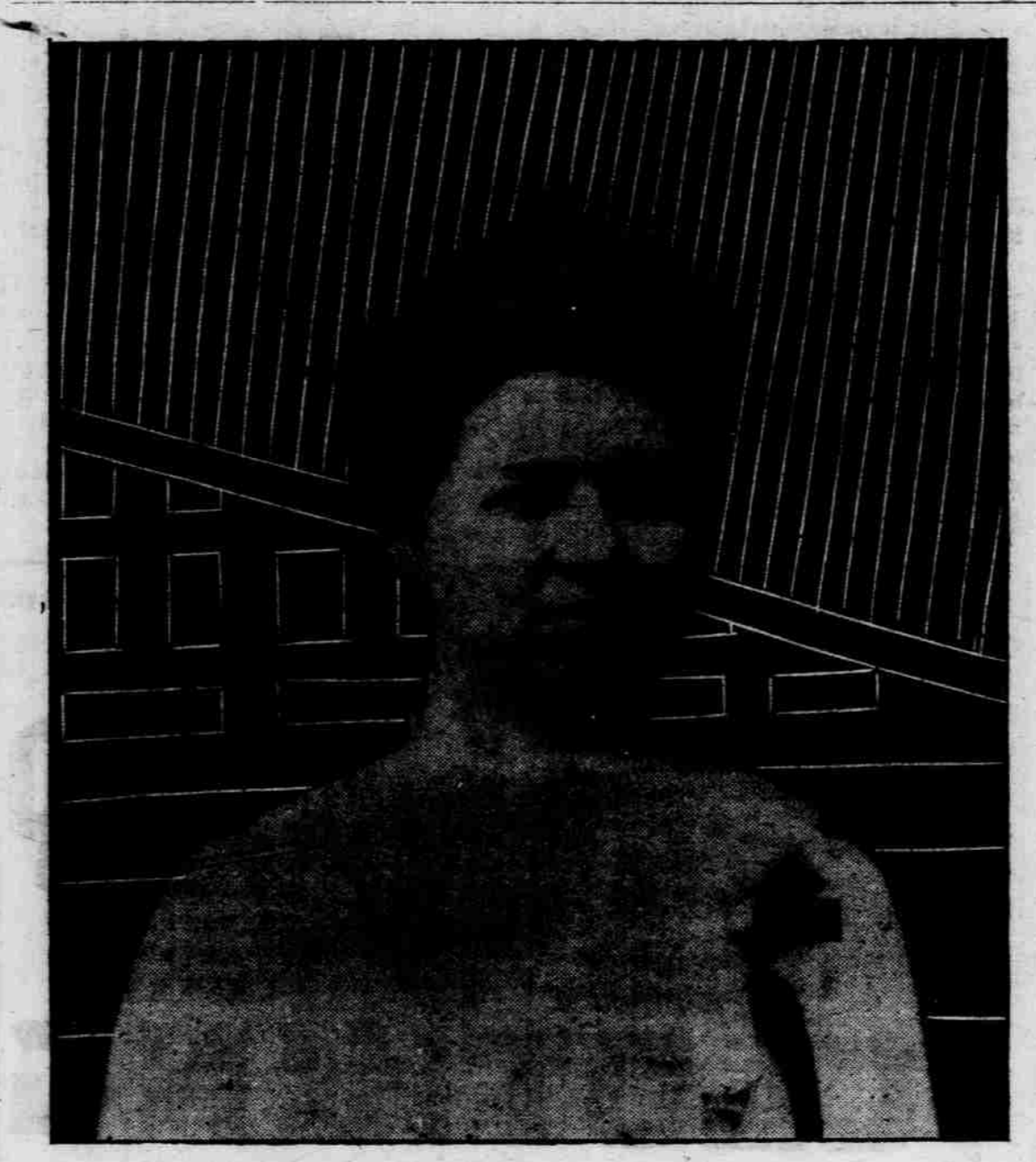
MISS LILLIE BLAND WINS IN CONTEST.

She Gets The Sun's Fifty Dollar Diamond Ring.

HER MAJORITY BEING 22,740.

The Four Highest Are Miss Bland 105,575, Miss Harris 82,835, Miss Powers 57,340, Miss Morrow 19,142—The Vote In Full.

The Sun's diamond ring contest closed last Thursday afternoon promptly at o'clock. Miss Lillie Bland, of Nanito, the pretty and accomplished daughter of Mr. and Mrs. W. L. Bland, is the successful lady and is the winner of the beautiful \$50.00 diamond ring by a very large majority. By the vote cast for her the people of this county say she is the most popular person in Rutherford county.



MISS LILLIE BRAND.

The Prettiest And Most Popular Lady In Rutherford County—105,575 Votes.

The total amount of votes cast was 281,905, which was much greater than expected. The following is the vote in full: Miss Lillie Bland, Nanito..... 105,575 Miss Mammie Harris, Ruth..... 82,835 Miss Novela Powers, Ruth..... 57,340 Miss Bonnie Morrow, Ruth..... 19,142 Miss Jennie Lytton, Caroleen..... 4,749 Miss Virginia Grayson, Ruth..... 2,621 Henry Forney, Union Mills..... 2,042 Miss Edna Long, Forest City..... 1,611 Miss Kathleen Harris, Ruth..... 1,225 Jno. C. Mills, Rutherfordton..... 1,058 Miss Bessie Young, Forest City..... 980 Miss Ruth D. Walker, Ruth..... 592 Miss Beth Forney, Wildemere..... 500 Miss Lula Brown, Cliffside..... 485 Miss Anne Ida Justice, Ruth..... 401 Miss Louise Carpenter, Ruth..... 325 Miss Gladys Lewis, Ruth..... 337 Miss Fairy Clemmer, Bostic..... 260 T. P. Reynolds, Forest City..... 250 Robert R. Simmons, Ruth..... 225 Miss Florence Harrill, Bonny..... 219 Miss May Hester, Rutherfordton..... 204 Miss Ethel Jackson, Forest City..... 200 Mrs. W. F. Rucker, Ruth..... 200 Mrs. J. M. Allhands, Henrietta..... 200 Miss Maggie Wiley, Ellenboro..... 150 Miss Mary Wells, Rutherfordton..... 105 Miss Della Huntley, Ruth..... 100 Mrs. J. P. D. Withrow, Hollis..... 100 J. P. D. Withrow, Hollis..... 100 J. W. Griffin, Rutherfordton..... 68 Cantus McDonald, Forest City..... 55 Miss Love Mae Flack, Gilkey..... 51 Ernest Price, Ellenboro..... 36 W. E. Flack, Gilkey..... 33 Mrs. F. W. King, Forest City..... 25 Miss Emma Carpenter, Ruth..... 25 Miss Etta McBrayer, Ruth..... 12 Kenneth Tanner, Caroleen..... 9

Joe Suttle Rutherfordton..... 7 G. C. Moore, Forest City..... 6 Miss Jonnie R. Logan, Union Mills..... 6 Miss Mammie Ross, Bonny..... 6 Trns Morgan, Rutherfordton..... 5 Otto Williams, Forest City..... 4 Miss Annie Conner, Ruth..... 3 Miss Marie Allen, Ruth..... 3 W. W. Gray, Rutherfordton..... 3 Miss Maude Livingston, Union M..... 2 Miss Irene Lathan, Union Mills..... 2 Miss Evie Ross, Bonny..... 2 Tyra York, Bonny..... 2 Lester Bridges, Bonny..... 2 Miss Nora Freeman, Bonny..... 2 Miss Janie King, Wildemere..... 1 Miss Lollie Harris, Ruth..... 1 Miss Louise Waldrop, Ruth..... 1 Miss Swannie Hester, Ruth..... 1 Miss Fannie Justice, Ruth..... 1 Miss Katie Edgerton, Union Mills..... 1 Miss Nannie Lou Morgan, U. M..... 1 Miss Laura McKeown, Wildemere..... 1 Miss Myrtle Arrowood, Wildemere..... 1 Miss Dillie Hensley, Cuba..... 1 Sherod Hall, Otter Creek..... 1 W. W. Horn, Cuba..... 1 Miss Meldona Livingston, U. M..... 1

TO WORK THE OLD BECHTLER MINE.

The Property To Be Re-Opened On A Large Scale.

70-FOOT SHAFT BEING SUNK.

The Company A Michigan Corporation, Capitalized At \$300,000. \$25,000 Worth Of Machinery On The Ground And More To Follow.

The Wolverine Goldmining Company, which about a year ago purchased the Bechtler gold mine, about three miles north of Rutherfordton, has begun what promises to be an extensive development of this famous old property. This company is a Michigan corporation and is capitalized at \$300,000. Its offices and shipping point will be Rutherfordton. About twenty-five thousand dollars worth of machinery has been recently delivered on the ground and a shaft located and sunk to a depth of about seventy feet. In addition to the machinery already delivered a thirty thousand-dollar stamp mill, of one hundred stamps, and a cyanide plant have been purchased and will be erected during the summer. The company now employs about thirty men on the works and are adding others as fast as machinery and material arrive.

Gold was first discovered in Rutherford county early in the last century, and the property now being developed by the Wolverine Company was successfully and profitably worked from 1830 till 1861, when the civil war put an end to it. It has never been, however, explored far below water level and its possibilities are not known. The veins traversing the Bechtler property have been traced and partially tested and opened from Broad river on the east to the Main Broad river on the north of Rutherfordton—a distance of some eight or ten miles. Mr. S. G. Abbott, of Sault Ste. Marie, Mich., the general superintendent of the Wolverine Company, has had wide experience in the development of gold mining properties, and he assures us that he has never seen a better prospect than the one he is now interested in. An electric plant will be installed for lighting and power purposes. The people of Rutherfordton and surrounding country are interested in the outcome of this enterprise as its success will make this a mining section.

Other northwestern companies have secured options on gold-bearing lands adjoining the Wolverine property and will in a few days

PROVED Satisfactory

Boston Mass., Jan. 25th, 1905 Mr. Chas. M. Stieff, Boston, Mass

Dear Sir:—The Stieff upright piano, which you sent to the New England Conservatory of Music on trial last October, has proved entirely satisfactory, and on the strength of this trial, I have decided to place an order with you for Twenty Five (25) Stieff upright pianos, same style as samples submitted. These pianos must be delivered at the New England Conservatory of Music on or before September 1st, 1905. Yours Very Truly Ralph L. Flanders, Manager.

Charles M. Stieff

Manufacturer of the piano with the sweet tone. Southern warehouses, 211-213 North Tryon St., Charlotte, North Carolina. C. H. WILMOTH, Manager. Mention this paper.

CANCER HOSPITAL

We want every man and woman in the United States to know what we are doing. We are curing Cancers, Tumors and Chronic Sores without the use of the knife, and are endorsed by the Senate and Legislature of Virginia. If you are seeking a cure, come here and you will get it. We guarantee our cures. The Kellam Cancer Hospital, RICHMOND, VA.

take up the titles. A widely known mica property adjoining the mineral lands mentioned above and known as "Isin Glass Hill." was purchased for mica several years ago by Indianapolis parties. Its development showed that the quantity of mica was unlimited, in fact more abundant than anywhere else in North Carolina, but valueless on account of its dark color, but has proven nevertheless to be of great value on account of the kaolin which it contains. The kaolin taken from this mine by analysis has been found to be of a finer quality than any other kaolin so far discovered in the United States, and it is rumored that a large pottery plant will be built on the property for the manufacture of a high grade of porcelain ware. Parties will visit Rutherfordton in a few days to perfect plans for the erection of this plant.

FREE! We have a nice Medicine Cabinet to give away to the lucky person out of 72 persons. Every family needs one just like it. All you have to do is to buy a bottle of FURNITURE POLISH for 15 cents. YOU GET A GUESS FOR 15 CTS. The Polish is worth 50 cents to any woman in her home. It is easy to use and goes along easy. Remember there is only 72 bottles, so come early and don't miss it. CROWELL AND WILSON Philadelphia, Pa. 10 State St., Boston Mass., Citizens Building, Cincinnati, Ohio, Old Colony Building, Roanoke, Va. EUROPEAN AGENTS: Fenchurch Avenue, London, E. C., England.