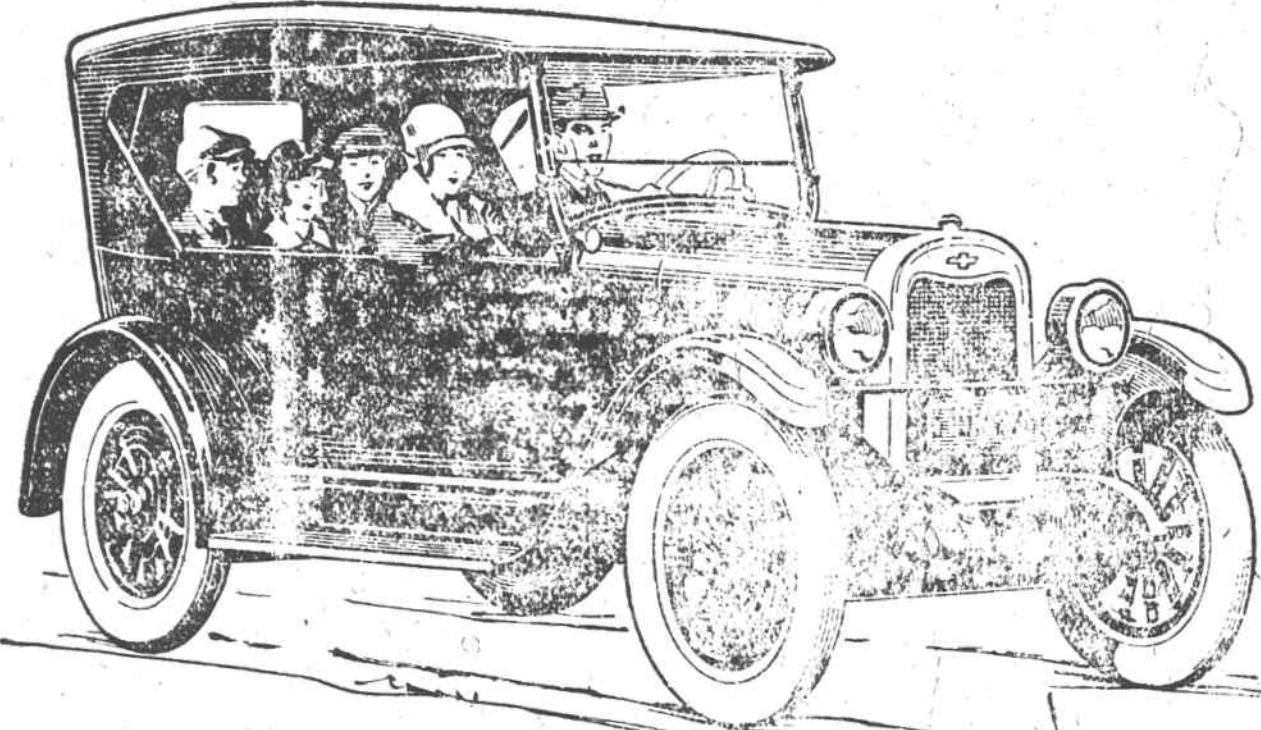


for Economical Transportation



The Touring Car

\$ 510

- Roadster - 510
- Coupe - 645
- Coach - 645
- Sedan - 735
- Landau - 765
- 1/2 Ton Truck 395
- 1 Ton Truck 550

All Prices f. o. b. Flint, Mich.

so Smooth

—that after a single ride you will pronounce the Improved Chevrolet a revelation in low-priced-car performance.

so Powerful

—that its ability to conquer hills and plow through mud or sand will literally amaze you.

so Durable

—that the passing months will prove to you that it has to millions, the lasting economy of buying this low-priced car of modern design and quality construction. Let us give you one ride in the Improved Chevrolet!

Cullowhee Motor Co.

QUALITY AT LOW COST

Ford

Highest in Quality  
Lowest in Price

The finest steel available are used in the manufacture of Ford cars. The plate glass for windshields and windows is as perfect as can be made. Upholstery material contains a larger percentage of wool than is ordinarily specified—even for much higher priced cars. The basic features of Ford design have never been improved upon by any manufacturer.

No other car offers greater dependability. The Ford car has won the favor of millions of users under every conceivable motoring condition. Its convenience is known and appreciated the world over; its performance is taken for granted.

Such quality is possible at Ford prices because every operation, from mining of ore to final as-

sembly, is under direct control of the Ford Motor Company.

Iron is taken from Ford mines in Michigan; coal from the Company's mines in Kentucky and West Virginia. Glass comes from Ford glass plants; wood from the Ford timber tracts in the North. Raw materials and finished products are carried over the Company's own transportation routes; coke ovens, blast furnaces, a steel mill, foundries and saw mills—all are part of this complete organization. There are even salvage plants, paper mill, cement plant, etc., to transform waste materials into useful by-products.

In this way every possible economy is effected. Under no other circumstances could Ford quality be had at Ford prices.

Features That Maintain Ford Leadership

- All-Steel Bodies
- Planetary Transmission
- Torque Tube Drive
- Dual Ignition System
- Thermo-Syphon Cooling
- Simple, Dependable Lubrication
- Three Point Motor Suspension
- Multiple Disc-in-Oil Clutch

FORD MOTOR COMPANY, DETROIT, MICHIGAN

NEW PRICES

TUDOR SEDAN	RUNABOUT	TOURING	COUPE	FORDOR SEDAN
\$520	\$290	\$310	\$500	\$565

Closed car prices include starter and demountable rims. All prices F. O. B. Detroit  
TWENTY-TWO YEARS OF LEADERSHIP

IN THE SUPERIOR COURT  
NORTH CAROLINA.  
JACKSON COUNTY.  
BUCHANAN & LEATHERWOOD

vs  
JULIUS McMAHAN

Notice to sell Lands Under execution

By virtue of an execution directed to the undersigned from the Superior Court of Jackson County in the above entitled action, I will on Monday, the 3rd day of May, 1926, at 12:00, noon, at the Court House door of said county, sell to the highest bidder for cash to satisfy said execution, all the right, title and interest which the said Julius McMahan, defendant, had or has in the following described real estate, to-wit:

FIRST TRACT

Beginning at a poplar at the head of a branch on the line of No. 124 and William Sutton's corner and runs S. 15 E. 14 poles to a chestnut, conditional corner; thence S. 4 W. 33 poles to a dogwood, conditional corner; thence S. 15 E. 8 poles to a black oak in a flat, conditional corner; thence S. 2 E. 31 poles to a chestnut on top of a ridge, conditional corner; thence S. 61 W. 20 poles to a hickory on a ridge, conditional corner; thence N. 85 W. 6 poles to a small locust in the line of No. 124, conditional corner; thence N. 45 W. with the line of No. 124, 70 poles to a locust in the head of a rich cove, thence N. 32 poles to a chestnut-oak; thence N. 80 E. 62 poles to the beginning, containing 27 acres more or less.

SECOND TRACT

Beginning at a chestnut-oak corner of the old Sutton tract also a corner of the 640 acre tract and runs thence N. 60 W. 35 poles to Bill Sutton's corner on top of a ridge; thence S. 12 W. 44 poles to the Northwest corner of the old Wm. Buchanan tract; thence N. 83 E. 25 poles to a locust, corner of the old Sutton tract; thence with said Sutton line to the beginning, containing 8 acres more or less.

This the 2nd day of April, 1926.  
N. L. SUTTON,  
Sheriff of Jackson County.

ENTRY NO. 6162

North Carolina, Jackson County.  
I S. M. Beck, do hereby enter and claim five acres, more or less, of land in Webster Township on head waters of Little Savannah Creek, Jackson County, North Carolina, adjoining the lands of Sam Beck, Cullowhee water shed tract of land and others and bounded as follows:

Beginning on a black oak corner of said Beck and runs S. 72 W. with Beck's line to a chestnut oak and then to a cove oak, old corner of the Wilburn Buchanan tract; then N. 65 E. with Buchanan old line to a stake in the Mack Frizzle old line on a ridge; then up the ridge to the beginning, containing by estimation five acres, more or less, and running so as to include all the vacant land in that vicinity.

Entered this 5th day of April, 1926  
S. M. BECK,  
Claimant.

Approved:  
Raymond R. Nicholson,  
Ex-Officio Entry Taker

NORTH CAROLINA  
JACKSON COUNTY.

IN the Superior Court.

NOTICE

CoyMcFee vs Ida Mac McFee  
The defendant above named will take notice that an action entitled as above has been commenced in the Superior Court of Jackson County to annul the bonds of matrimony now existing between the plaintiff and defendant, and said defendant will further take notice that she is required to appear before the clerk of the Superior Court of Jackson County on or before the 3 day of May, 1926 and answer or demur to the complaint in said action, or the plaintiff will apply to the Court for the relief demanded in said complaint.

This the 1 day of April, 1926.  
JOHN D. NORTON,  
Clerk Superior Court Jackson County

NORTH CAROLINA,  
JACKSON COUNTY.

By virtue of the power and authority given to the undersigned, Trustee, in a certain Deed of Trust executed by F. E. Parker and wife Emily Parker and A. D. Parker to Cyrus A. Nicholson Trustee for Wilburn Parker, dated February 26, 1925, and recorded in the office of the Register of Deeds for Jackson County in Book No. 94 at page 214, default having been made in the payment of the indebtedness thereby secured, the undersigned trustee will offer for sale and sell to the highest bidder for cash, at the Court House door in the town of Sylva, N. C., on Thursday Noon, May 6, 1926, a Five Sixth (5-6) undivided interest in the following described lands:

Lying and being in Jackson County State of North Carolina, and more particularly described and bounded as follows:

Being in Cullowhee Township, adjoining the lands of Bob Ashe, Silas Davis Wilson Lowery, W. C. Norton and others:

Beginning on a spanish oak, opposite N. H. Bryson's house on top of the ridge and runs thence N. 55 E. 14 poles to a black gum; thence N. 20 E. 22 poles to a hickory; thence N. 55 W. 38 poles to a white oak side of a wagon road; thence S. 54 W. 18 poles to a small white oak; thence S. 23 E. 14 poles to a small chestnut; thence S. 31 W. 6 poles with said road; thence N. 84 W. 12 poles to a stake; thence S. 85 W. 14 poles to a black oak; thence S. 65 W. 20 poles to a white oak; thence S. 54 W. 10 poles to a stump near the river, Old Corner of Grant No. 31; thence 80 5 W. 95.1 poles to a spanish oak bush at A. Ashe's line; thence S. 67 poles to a white oak; thence N. 51 E. 24 poles to a white oak; thence N. 38 E. 14 poles to a large chestnut; thence N. 78 E. 50 poles to a spanish oak; thence E. 14 poles to a locust; thence S. 63 E. 46 poles to a black oak sapling, C. J. Bennett's N. E. corner; thence S. 63 E. 46 poles to a white oak; thence 72 E. 30 poles to the beginning. Containing 58 acres more or less.

This the 6th day of April 1926.  
CYRUS H. NICHOLSON, Trustee.

NOTICE

Having qualified as administrator of the estate of Theodore Corbin, deceased, late of Jackson County North Carolina, this is to notify all persons having claims against the estate of said deceased to exhibit them to the undersigned at Norton, N. C., on or before the 16 day of April, 1927 or this notice will be deemed in bar of their recovery. All persons indebted to said estate will please make immediate payment.  
This the 16th day of April, 1926.  
PRIESTLY CORBIN, Administrator of Theodore Corbin.

NOTICE OF SUMMONS AND WARRANT OF ATTACHMENT.

NORTH CAROLINA  
JACKSON COUNTY.

in the Superior Court.

Belva Cagle

vs.

Joseph E. Buchanan

The defendant above named will take notice that a summons in the above entitled action was issued against the defendant on the 30th day of March 1926 by John D. Norton Clerk Superior Court for Jackson County North Carolina, which summons is returnable before said clerk on the 10th day of May, 1926. The defendant will take notice that a warrant of attachment was issued by said Clerk on the 30th day of March, 1926, which said warrant of attachment is returnable before said Clerk on the 10 day of May, 1926 at the time and place for the return of this summons, when and where the defendant is required to appear and answer or demur to the complaint, or the relief demanded will be granted.

This April, 1, 1926.

JNO. D. NORTON  
Clerk Superior Court.

NOTICE

NORTH CAROLINA,  
JACKSON COUNTY.

Upon a petition of a legal number of the qualified voters of Webster Special School District the Board of County Commissioners, of Jackson County made and entered of record the following order:

Ordered by the Board at its regular meeting that a special election be held in the special school district hereinafter described in Webster and Sylva townships, Jackson County, North Carolina, to determine the will of the qualified voters on an additional special tax not to exceed 20 cents above the present 30 cent levy on the One Hundred Dollars valuation and 60 cents on the poll above the present levy to supplement the school funds of said school district, which is described as follows:

Being all of Webster Special School District, which includes all of Webster Special School District of Webster township and all that part of Sylva Township lying within the Webster Special Tax District.

It is further ordered that an election be held on May 17th, 1926 at the regular polling place in Webster township. It is further ordered that Valter Frizzell be and is hereby appointed Registrar and G. W. Hoyle and W. C. Cagle be and are hereby appointed judges of said election. It is further ordered that said election be held under the authority contained in Article 17, Sections 219 to 223 of the Public School Laws of North Carolina. A new registration of the qualified voters in said special School District is hereby ordered and the registration books will be open for registration of voters beginning with the 16 day of April 1926 and closing the 8th day of May, 1926 and the books will be open for registration at the regular polling place on Saturday, April 17, April 24, May 1 and May the 8th, and challenge day will be on Saturday, May 15th and the election will be held on Monday, May 17th, 1926.

All those in favor of the levy and collection of the special tax shall vote a ticket on which shall be printed the words "For Local Tax" and those who oppose the levy and collection of the special tax shall vote a ticket on which shall be printed the words "Against Local Tax."

Done in regular session on April 1st, 1926.

RAYMOND R. NICHOLSON,  
Clerk to the Board of County Commissioners.

Black Minorea and White Wyandott eggs \$1.00 for 15 or \$1.50 post paid.  
S. T. Crisp Dillsboro N. C.

Regardless of the cold weather I am having some real nice tomato plants for sale this season  
MRS. Jas. H. Cathey  
Sylva, N. C. Box 381.

White Leghorn eggs for hatching at \$1.00 for fifteen from mating of my T. & H. hens with Tom Barrow and Hollywood cocks.  
G. T. COOPER.

TO THE DEMOCRATIC VOTERS OF THE 20th JUDICIAL DISTRICT

I am a candidate for re-election for the office of Solicitor of the 20th Judicial District, subject to the wishes of the Democratic voters.

I assure you that I will appreciate your support and influence in the coming Primary.

GROVER C. DAVIS.

EGGS FOR SETTING—From the following matings; Sheperds famous Ancona's, also from Barred Rocks, mated with Parks and E. B. Thompson cocks.