

**SAVE ON FERTILIZERS;  
LOSE ON TOBACCO**

Raleigh, N. C., March 22—Fertilizers are cheap; lower in price than for several years, but tobacco farmers had best consider quality of goods before placing their orders.

"Let me strongly urge the tobacco farmers of North Carolina to consider the quality of their fertilizers this season," says E. Y. Floyd, extension tobacco specialist at State College. "Fertilizers are lower in price than in several years and the chances are that the quality will also be lower for no one expects the manufacturers to produce and sell plant food mixtures below cost. Tobacco is a crop that must have the best plant food materials to make quality weed. This material must be mixed in the right proportions so that it will feed the plant from the beginning until it is killed out for ripening under average seasonal conditions."

Mr. Floyd states that a few dollars saved in buying a ton of fertilizer might cause a loss of several hundred dollars in the resulting crop, especially if cheap materials are used in the fertilizer.

Numbers of fertilizer demonstrations with tobacco conducted by farmers on the sandy loam soils of North Carolina, for the past three years, show that the best results are secured when not over 50 percent of the nitrogen comes from quickly soluble goods. Nitrate of soda and sulphate of ammonia are satisfactory for this form of nitrogen. The organic sources that give best results are cottonseed meal, dried blood, fish meal, peruvian guano and tankage. If half of the nitrogen is derived from two or more of these organic sources and the other half from the two quickly soluble sources, then good results may be expected.

With potash, best results are secured when half of the material comes from muriate and half from sulphate. A grower should not hesitate to use 5 or 6 percent potash if it is mixed half and half, but Mr. Floyd states that all the potash should not come from muriate of potash.

**MOST COVER CROPS  
TURNED TOO EARLY**

Raleigh, N. C., March 22—For the winter cover crop to add much nitrogen or humus to the soil, it must be allowed to make considerable growth. "To really build up our soils by turning under winter cover crops, the crop should be allowed to make considerable growth," says Enos C. Blair, extension agronomist at State College. "The crop will help prevent erosion and check leaching of plant food from the land by merely staying on the soil through the winter but then it merely saves what the soil already contains. Only by making a large growth can the crop gather much nitrogen from the air or supply much humus to the soil."

Mr. Blair states that in eastern Carolina, it is the custom to begin grazing fall-sown cover crops as soon as they make some growth. The crops are then grazed until March or April and then comes the fever to get to plowing. The little three or four inch cover goes under and the owner wonders why some folks say that such a crop is a soil builder.

One man was observed by Mr. Blair last April plowing under a two inch growth of crimson clover for cotton while the greater part of the farm had no such crop at all. It would have been better in Mr. Blair's opinion for this farmer to have planted cotton on a part of the land only and to save the clover until it was in bloom. It could have been turned under for corn at that time and would have increased the yield at least 15 bushels per acre.

All that is necessary to secure a large quantity of humus from a cover crop is to take the livestock from the field and let the crop grow three or four weeks before turning it under. A legume crop will gather more nitrogen during this time than it did all winter. This will also permit time for the planting of corn, tobacco, soybeans or peanuts by May first to fifteenth.

The proper time to turn under vetch or crimson clover is when the crops are in full bloom and rye when it is knee high.

**HOW BEETLE CAUSES  
WORMY PEACHES**

Raleigh, N. C., March 22—Wormy peaches are caused by a beetle known as the curculio which lays its eggs in the fruit. The beetle is slightly larger than the boll weevil and a close relative.

Described by C. H. Brannon, extension entomologist at State College, this peach curculio hibernates thru the winter as an adult under leaves and trash and emerges in spring just as the peach buds are opening. It feeds on the foliage until the young fruit is set, then it goes to work. The fruit is damaged in two ways. First the beetle eats a hole in which an egg is placed. This hole is sealed over and a crescent shaped scar is made just above the egg puncture. This prevents the young worm from being crushed when the peach grows. Second, the beetle damages fruit by feeding. These feeding punctures are not sealed.

Mr. Brannon states that this beetle is known as the million dollar bug among peach growers.

It does serious secondary injury also, especially during wet weather when disease spores get into the punctures and brown rot, especially, is increased this way. Little damage is done by the curculio from feeding on the leaves.

There are two generations of the pest, states Mr. Brannon. Generally by the time the second brood comes along, the increase is enormous and unless controlled by spraying, it may wipe out an entire crop of late peaches such as Elbertas. The eggs of the insect hatch out in about three days in warm weather. Each female will lay from 100 to 500 eggs and the larvae or worms feed in the fruit for about 20 days. They then go into the soil and emerge in about 28 days as adults. Beetles of the first generation die during winter but the second generation enter hibernation and emerge in the spring to attack fruit.

Mr. Brannon has publications and other information which tell how this pest is controlled and he will be glad to send the information on request.

**CLAY COUNTY GETS TWO  
WEEKS EXTRA COURT**

Clay County News.

A certified copy of a bill ratified on March 9th by the General Assembly giving Clay, Graham and Macon counties two weeks more court per year was received by the Clerk of Court Monday. This bill provides a court for Clay county to convene on the first Monday in May and continue two weeks, thus making the spring term come two weeks later than heretofore, and the fall term to convene in September one week earlier than before this law was made. This law became effective immediately upon ratification, and is of vital interest to the people of Clay county, our court docket had become so congested that it was imperative

Over-crowding the young chicks will cause heavy losses. Each four chicks should have at least one square foot of floor space in the brooder house.

The turpentine industry of North Carolina shows prospects of coming back if fire is kept from the second growth long leaf pine now making good growth in certain parts of the State.

American Forest Week will be observed April 24 to 30.

Cover crops add more humus and nitrogen to the soil when allowed to make some growth before turning under.

Mr. Punk advertiser says use the cheapest fertilizer you can buy for the tobacco crop this year.

**NOTICE OF SUMMONS SERVED  
BY PUBLICATION**

North Carolina,  
Jackson County,  
Superior Court.  
Mrs. Neal Quiett  
vs.  
Hubert Quiett

The defendant above named will take notice that an action has been commenced in the Superior Court of Jackson County, in the State aforesaid, by the plaintiff against the defendant for the purpose of severing the bonds of matrimony existing between the plaintiff and the defendant, and a summons therein has been issued returnable before the Clerk of the Superior Court of Jackson county, Sylva, N. C., on the 5th day of April, 1927, when and where the defendant is required to appear and answer the complaint to be filed therein and if the defendant fails to answer, the plaintiff will take judgment for the relief asked in said complaint.

This the 5th day of March, 1927.  
J. T. GRIBBLE  
Clerk Superior Court.

**SYLVA HOTEL**

Reopened under new management. Excellent meals, good beds, nice rooms.  
Reasonable Rates  
Opposite Depot  
J. H. DeHART,  
Manager

SUBSCRIBE TO THE JOURNAL

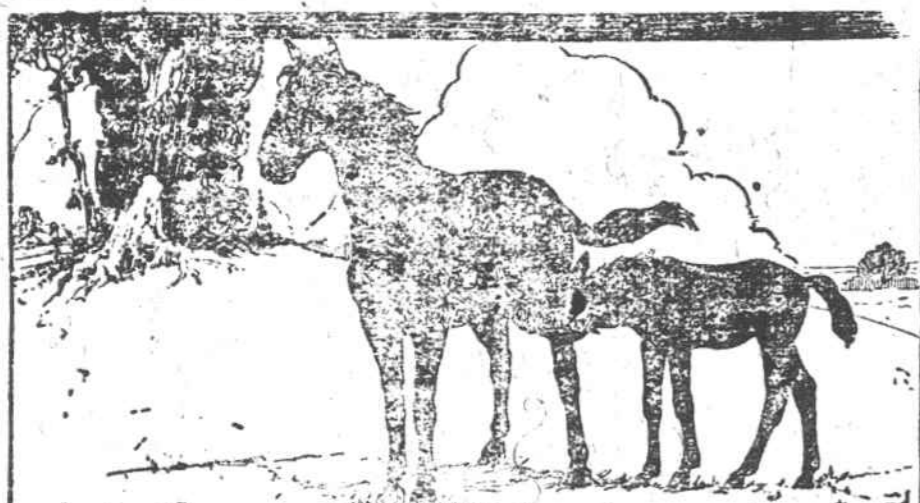
SUBSCRIBE TO THE JOURNAL

**SAFE FOR ALL**

It used to be that the only fellow who could safely buy used cars was the expert who could tell what he was getting and the junk dealer who didn't care. Personally, we have found it profitable to make the world safe for used car buyers—amateurs as well as experts.

M. BUCHANAN, JR., GARAGE

A USED CAR IS ONLY AS DEPENDABLE AS THE DEALER WHO SELLS IT



**Tuxedo Builds  
Strong Colts**

Specialists proclaim that what you feed babies in their early years determines the kind of health they'll have in after life.

This is just as true of colts. Feed haphazardly and the result will be a weak-kneed animal. Feed Tuxedo Chop and the youngster grows into a worker who earns his keep and a good profit besides. Better colts are bred if the mare eats Tuxedo Chop regularly. Breed them and feed Tuxedo Chop the year round. We recommend it for the best results.

J. B. ENSLEY & SON  
SYLVA, N. C.

**Tuxedo Chop**

- Cere-à-lia Sweets
- Tuxedo Dairy
- Tuxedo Hog Ration
- Tuxedo Chop
- Tuxedo Chick
- Tuxedo Starter



- Tuxedo Buttermilk Growing Mash
- Tuxedo Developer
- Tuxedo Egg Mash
- Tuxedo Scratch
- Tuxedo Poultry Fattener, Etc.

**CLUB MEMBERS SELECTED  
TO REPRESENT STATE**

Raleigh, N. C., March 22—Miss Lela Paul of Pike Road, Beaufort County, Miss Augusta Raymond of Como, Hertford county, Elton Whitley of Albemarle, Stanley County, and Aaron Peele of Pikeville, Wayne county, are the four leading club members of North Carolina who will represent the state at the first National Club Encampment to be held at Washington, June 15 to 22.

Each of these four young people was recommended by his home and farm agents. Each has been a leading club member for several years. Each has held important positions and trust and responsibility in the local club organization. Each has conducted several club projects successfully and finished the work as outlined by the extension authorities.

Miss Paul is a member of the Pungo club. She has held all of the elective offices in the club, has attended two short courses for club members at State College and has been active at the annual club encampment. She will be 18 years of age in June and has been in club work for about four years.

Miss Raymond is a member of the Lucille Hill Club and has been president of the organization for three years. She is just past 17 years of age and is now a freshman at the North Carolina College for Women. She has the reputation of doing more than her share of work in any club activity and she has attended both the short courses at State College and the annual club encampments.

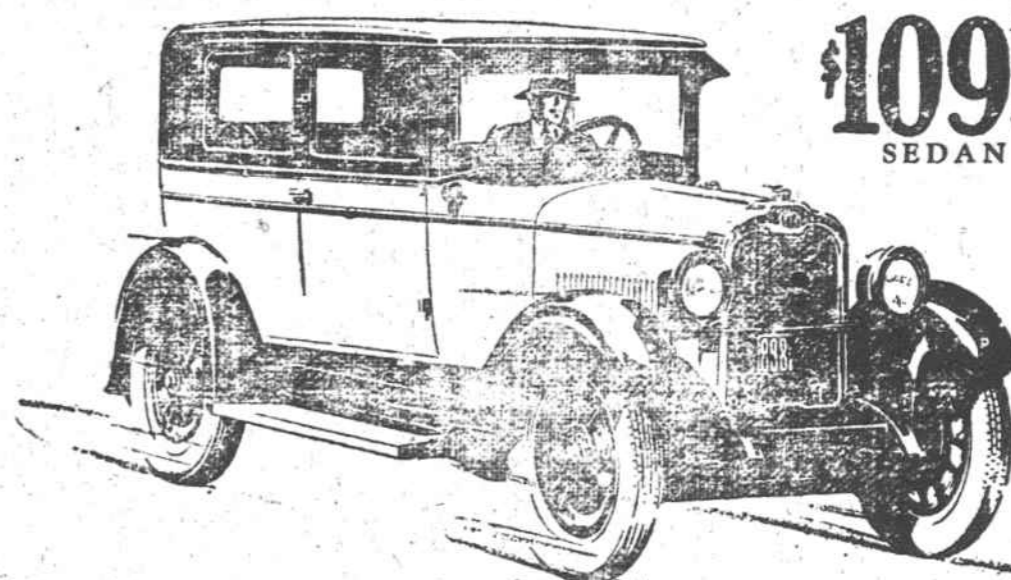
Elton Whitley is a member of the Endy Club. He has made money in pig club work, established the first pastures on his father's farm and has been successful with corn, pasture and legume projects. He has also attended the club short course at State College and is a natural leader among his fellows.

Aaron Peele is a member of the Nahunta Club. He has attended two state short courses and has been active in corn, cotton, pig and bee clubs. He has cleared about \$500 in his club activities.

**Renew Your Health  
by Purification**

Any physician will tell you that "Perfect Purification of the System is Nature's Foundation of Perfect Health." Why not rid yourself of chronic ailments that are undermining your vitality? Purify your entire system by taking a thorough course of Calotabs,—once or twice a week for several weeks—and see how Nature rewards you with health. Calotabs are the greatest of all system purifiers. Get a family package, containing full directions. Only 85 cts. At any drug store. (Adv.)

**"only the most advanced engineering could create it—only super-precision methods could produce it"**



**\$1095**  
SEDAN

If you are one of these sound automobile buyers who buy on comparative values, and if you compare the Greater Oakland Six against the best its field affords—you will discover that only the most advanced engineering could create it... and only super-precision methods could produce it.

interchangeable main bearings, fact controlled tilting-beam headlights and four-wheel brakes. Nor in any other car of comparable price will you find so many examples of that super-precision in manufacture directly responsible for long car life and lasting owner satisfaction.

In no other car of the \$1000 class will you find such a matchless combination of engineering advancements as in the Greater Oakland Six. For no other car, regardless of price, provides Oakland's Rubber-Silenced Chassis and Harmonic Balancer, Oakland's full pressure oiling, bronze-backed in-

All Oakland piston pin bushings are diamond bored... All Oakland connecting rods are exactly matched for center of gravity and weight. All Oakland rotating parts from transmission to rear axle are completely balanced. These are practices which typify the most modern and exacting principles of scientific manufacture—and Oakland uses them all!

Oakland Six, \$1025 to \$1295. The New and Finer Pontiac Six—at New Low Prices—\$775 to \$975. Bodies by Fisher. All prices at factory. Easy to pay on the General Motors Time Payment Plan.

BULLOCK MOTOR COMPANY

The Greater  
**OAKLAND SIX**  
PRODUCT OF GENERAL MOTORS ~ ~ WINNING AND HOLDING GOOD WILL