

OUR CHURCHES

SYLVA METHODIST CHURCH

Rev. W. M. Robbins, Pastor
 Schedule of Services.
 Preaching at Sylva every Sunday morning at 11 o'clock except the 4th Sunday and every Sunday evening at 7:30 except the 2nd Sunday.
 Sunday school every Sunday morning at 10 o'clock.
 Epworth League every Sunday evening at 7 o'clock.
 Prayer meeting every Wednesday evening at 7:30.
 Preaching at Dillsboro every 4th Sunday morning at 11 o'clock and every 2nd Sunday evening at 7:30.
 Preaching at Balsam every 1st and 3rd Sunday afternoon at 3:15.
 The public is cordially invited to all these services.

SYLVA BAPTIST CHURCH

Preaching on first and third Sunday mornings at 11 o'clock and on second and fourth Sunday evenings at 7 o'clock, by Rev. T. F. Deitz.
 Sunday School at 9:45.
 B. Y. P. U. at 6 o'clock Sunday evenings.
 Prayer meeting at 7 o'clock Wednesday evening.
 Choir practice immediately following prayer meeting, each Wednesday evening.
 A very cordial invitation is extended to the public to attend all of these services.

BALSAM GROVE BAPTIST CHURCH

Rev. Ben Cook, Pastor
 Preaching Saturday before the first Sunday, at 11 o'clock and the first Sunday, at 11 o'clock.
 Sunday School every Sunday morning, at 10 o'clock.
 Everybody invited to all of these services.

BLACK MOUNTAIN BAPTIST CHURCH

Rev. Ben Cook, Pastor.
 Preaching Saturday before the second Sunday, at 2:30, Sunday at 11 o'clock.
 Sunday School at 10 o'clock.
 Prayer Meeting Wednesday evening at 7:30
 Everybody is invited to attend all of these services.

CEDAR BAPTIST CHURCH

Rev. Ben Cook, Pastor.
 Preaching Saturday before the third Sunday, at 2:30; Sunday at 11 o'clock.
 Sunday School every Sunday morning at 10.
 Everybody is invited to attend all these services.

NEW SAVANNAH BAPTIST CHURCH

Rev. Ben Cook, Pastor.
 Preaching Saturday before the fourth Sunday at 2:30 and Sunday at 11. Sunday School at 10.
 Everybody is invited to attend all these services

QUALLA BAPTIST CHURCH

Rev. R. L. Cook, Pastor
 Sunday School every Sunday morning at 10:00 o'clock
 Preaching Third Sunday Morning in each month at 11:00 o'clock.

NOTICE OF SUMMONS SERVED BY PUBLICATION

North Carolina, Jackson County, Superior Court.
 Mrs. Neal Quiett vs. Hubert Quiett

The defendant above named will take notice that an action has been commenced in the Superior Court of Jackson County, in the State aforesaid, by the plaintiff against the defendant for the purpose of severing the bonds of matrimony existing between the plaintiff and the defendant, and a summons therein has been issued returnable before the Clerk of the Superior Court of Jackson county, Sylva, N. C., on the 5th day of April, 1927, when and where the defendant is required to appear and answer, the complaint to be filed therein and if the defendant fails to answer, the plaintiff will take judgment for the relief asked in said complaint.

This the 5th day of March, 1927
 J. T. GRIBBLE
 Clerk, Superior Court.

The slogan, "Five Cracking Good Cows and One Hundred Cracking Good Hens," for every farm in Madison County is bearing fruit and there is a change appearing in the agriculture of that county.

REEDBIRDS, OR BOBOLINKS, NO LONGER PERMITTED TO BE KILLED

By an order of the Secretary of Agriculture it is no longer permitted to kill reedbirds, or bobolinks, known in the North as bobolinks. In 1919, owing to the serious depredations of bobolinks on the rice crops of North Carolina, South Carolina, Georgia, and Florida, permission was granted by the Secretary, under authority of the migratory-bird treaty act, administered by the Biological Survey of the United States Department of Agriculture to kill these birds in Pennsylvania, New Jersey, Delaware, Maryland, the District of Columbia, North Carolina, South Carolina, Georgia, and Florida for the protection of rice growers. This permission is now revoked.

Under the new order, a person or members of his immediate family or bona-fide employees, owning or leasing lands in North Carolina, South Carolina, Georgia, or Florida on which rice is being grown, may shoot bobolinks, or reedbirds, only when authorized by special permit issued by the Secretary of Agriculture and countersigned by the chief official in charge of the enforcement of the fish and game laws of the State in which the permit is effective, and only during the period from August 16 to November 15, inclusive, on rice fields where such birds are seriously injuring crops.

CAN CONTROL CUTWORMS BY POISONED BAIT

Raleigh, N. C., March 29—Home gardeners are studying the seed catalogues, clearing up the garden spot and with commendable energy are planning now to supply the family with a constant supply of fresh succulent vegetables as a result of their labors.

"Meanwhile," says C. H. Brannon, extension entomologist at State College, "the ever present cut worm is waiting, somewhat hungrily, for the first of the succulent shoots to appear from the ground. Then he too will get busy. He wants only the finest of the plants — those that are strong and growing well because in those will he get the feed supply that he needs for his voracious appetite."

"These cutworms often do tremendous damage by feeding on the young plants. The worms cut off the plants at or near the surface of the ground. Few farms or gardens have escaped serious damage by these pests. But they can be controlled. By using the following formula, the worms may be wiped out in a short time: Wheat shorts or wheat bran, five pounds; Paris green, 1 1-2 ounces, cheap molasses, 1.2 pint, and water, one gallon."

Mr. Brannon states that the shorts or bran should be mixed with the Paris green while dry and then this is wetted with a mixture of the water and molasses until damp enough that it will fall in small lumps about the size of oat grains when sown about the plants.

This poisoned mash is scattered on the ground around each plant about the same time that they are set in the open ground. If the plants are not to be reset, a small application of the mash made at intervals should be applied.

It is best to scatter the poisoned mash in the evening and the gardener must remember to keep his poultry away from the poisoned places.

STATE MAY AGAIN HAVE TURPENTINE INDUSTRY

Raleigh, N. C., March 29—There are now approximately 200,000 acres of second-growth long leaf pine in North Carolina ready for working in turpentine operations.

"Recent investigations lead me to believe that this State may reestablish its turpentine industry but on a modern basis which will do away with much of the waste of former operations," says R. W. Graeber, extension forester at State College. "In recent months a number of timber owners in the southeastern section of the State have been interested in starting turpentine operations on second-growth long leaf pine. The prospects are bright."

Mr. Graeber states that the new operators will use the cup and gutter method along with light chipping, instead of the old method of cutting a

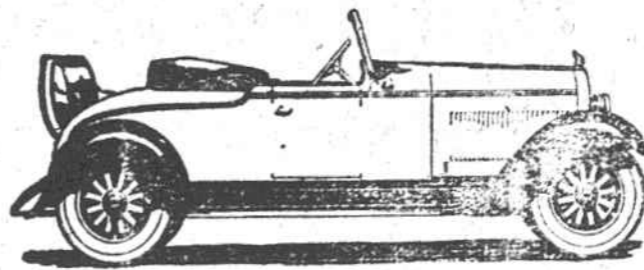
deep box in the tree and heavy chipping. Several small operations have been started in Bladen and Columbus counties. One large concern is making plans to start operations on a commercial scale in New Hanover and Brunswick counties. This latter undertaking will get underway by the time the crop of 1928 is ready.

A. J. Butler of Hoffman is start-

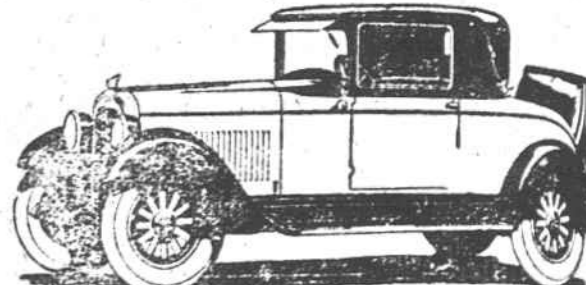
ing a small operation in the Sand Hill section. Here the work of hanging cups is in progress and chipping will start in a few days. Mr. Butler is putting in a modern turpentine still at Hoffman and expects later to have facilities for handling the gum from a number of operations that will be started in the adjacent territory. Mr. Graeber states that with the hogs out of the woods and the growth protected from fire, a second crop of long leaf pines is coming back. When this second growth reaches a diameter of ten inches or more, it is ready for turpentine production. At this age and size it will produce gum faster than will the old trees.

TWO NEW BODY TYPES

never before such style and smartness in a low-priced six



The Sport Roadster \$775



The Sport Cabriolet \$835

Dash, rakishness and sheer value in a four-passenger open car have never been so supremely combined as in the new Pontiac Six Roadster at \$775. Lucerne Blue Duco, striped in Faerie Red. Long, low, graceful lines. Gray shark grain leather upholstery. A swanky rear deck with a spacious rumble seat, a removable top of smart gray material—and, of course, all the power, speed and stamina of the famous Pontiac Six motor!

With its body designed and built by Fisher, the Sport Cabriolet is the lowest priced six-cylinder

car of its type on the market. It is finished in an unusually attractive combination of Duco colors—Brevoort Green on the sweeping crown fenders and upper structure, Cherokee Gray on the body proper. It is upholstered in green leather and handsomely appointed. The rumble seat accommodates two extra passengers. And yet the price is only \$835! If you want Pontiac Six value—and prefer a youthful type of body—come in and see the new Roadster and Sport Cabriolet today!

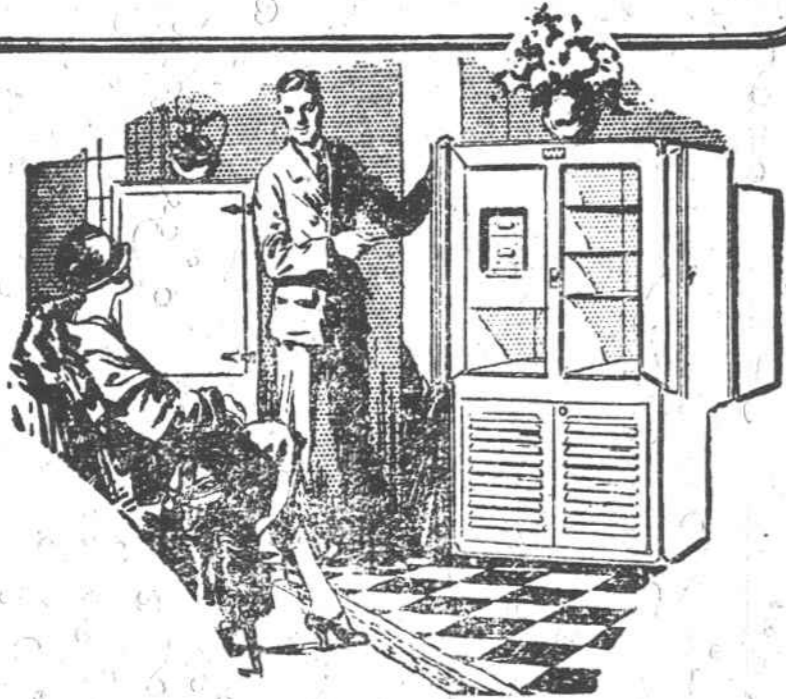
AT NEW LOW PRICES

Sedan \$775 Sport Roadster \$775 Sport Cabriolet (4-pass.) \$835
 Coupe 775 Landau Sedan 895 De Luxe Landau Sedan 975
 Oakland Six, \$1025 to \$1295. All prices at factory.
 Easy to pay on the General Motors Time Payment Plan.

BULLOCK MOTOR COMPANY, SYLVA, NORTH CAROLINA.

PONTIAC SIX

A small first payment puts Frigidaire in your home



Install Frigidaire now!

Be ready for warm weather

DON'T wait another day to start enjoying the convenience, economy and dependability of Frigidaire. You can have it tomorrow. Come to our display room and we'll tell you how a small down payment will put genuine Frigidaire in your home at once—then pay as you use it on the liberal G. M. A. C. monthly payment plan. Have care-free refrigeration—complete and permanent independence of outside ice supply through this summer, and forever.

L. C. Hall

Frigidaire
 PRODUCTS OF GENERAL MOTORS

TAX NOTICE

TO THE TAXPAYERS OF THE TOWN OF SYLVA:

You will hereby take NOTICE that your town tax for 1926 was due and payable on October 1, 1926.

You are hereby requested to come forward and pay your town tax now and save the cost of advertising and sale.

You will further take notice if your taxes are not paid on or before the first day of April, 1927, your property will be advertised for sale as is required by law.

Allen Sutton

TOWN TAX COLLECTOR

SAMS' SALV For

PNEUMONIA, COLDS

GROUP, INFLUENZA, HEADACHE

Ask Your Dealer or Write

Caldwell Medicine Co

BOX 313, ASHEVILLE, N. C.