

OUR CHURCHES

SYLVA METHODIST CHURCH

Rev. W. M. Robbins, Pastor
Schedule of Services.
Preaching at Sylva every Sunday morning at 11 o'clock except the 4th Sunday and every Sunday evening at 7:30 except the 2nd Sunday.
Sunday school every Sunday morning at 10 o'clock.
Epworth League every Sunday evening at 7 o'clock.
Prayer meeting every Wednesday every 2nd Sunday evening at 7:30.
Preaching at Balsam every 1st and 3rd Sunday afternoon at 3:15.
The public is cordially invited to all these services.
Preaching at Dillsboro every 4th evening at 7:30.

SYLVA BAPTIST CHURCH

Rev. J. G. Murray, Pastor
Preaching every Sunday at 11 o'clock in the morning and at 6 o'clock in the evening.
Sunday School at 9:45 Sunday morning, A. J. Dills, superintendent B. Y. P. U. at 7 o'clock Sunday evening.
Prayer meeting at 8 o'clock Wednesday evening.
Choir practice immediately following prayer meeting each Wednesday evening. W. C. Reed, choir director
A very cordial invitation is extended to the public to attend these services.

BALSAM GROVE BAPTIST CHURCH

Rev. Ben Cook, Pastor
Preaching Saturday before the first Sunday, at 11 o'clock and the first Sunday, at 11 o'clock.
Sunday School every Sunday morning, at 10 o'clock.
Everybody invited to all of these services.

BLACK MOUNTAIN BAPTIST CHURCH

Rev. Ben Cook, Pastor.
Preaching Saturday before the second Sunday, at 2:30, Sunday at 11 o'clock.
Sunday School at 10 o'clock.
Prayer Meeting Wednesday evening at 7:30
Everybody is invited to attend all

of these services.

CEDAR BAPTIST CHURCH

Rev. Ben Cook, Pastor.
Preaching Saturday before the third Sunday, at 2:30; Sunday at 11 Sunday School every Sunday morning at 10.
Everybody is invited to attend all these services.

NEW SAVANNAH BAPTIST CHURCH

Rev. Ben Cook, Pastor.
Preaching Saturday before the fourth Sunday at 2:30 and Sunday at 11. Sunday School at 10.
Everybody is invited to attend all these services

QUALLA BAPTIST CHURCH

Rev. R. L. Cook, Pastor
Sunday School every Sunday morning at 10:00 o'clock
Preaching Third Sunday Morning in each month at 11:00 o'clock.

NORTH CAROLINA, JACKSON COUNTY.

I, Jess F. Brown, a citizen of Jackson County, North Carolina do hereby enter and claim Sixteen (16) acres of land more or less, in Savannah Township, Jackson County, North Carolina, lying and being on the headwaters of Savannah Creek; Beginning on a small chestnut, a corner of Grant Number 450, standing North 20 Degrees East Ten poles from the locust beginning corner of the R. O. Brown land, in the County Line and runs thence with R. O. Brown Land North 13 Degrees East about 200 poles to a Black Gum in the Hornbuckle Gap, thence to and with Bishop's Land and Grant No. 450, and various courses and distances for complements to the beginning, as the case may be so as to include all the vacant land lying in that vicinity.

Jesse F. Brown L. S., Claimant
Approved; W. W. Bryson,
Entry Taxer for Jackson County.
9-7-4ts.

Expert Watch and Jewelry Repairing
RAYMOND GLENN

NOTICE OF TRUSTEES SALE OF LANDS

North Carolina, Jackson County

By virtue and authority vested in the undersigned W. R. Sherrill, trustee, by a certain deed in trust by Elbert Bryson on the 28th day of May, 1927, and recorded in the office of the Register of Deeds of Jackson County in Book 101 at page 164, and default having been made in the payment of the indebtedness thereby secured and the same being past due and unpaid and demand having been made by the owner and holder of the note secured by said deed in trust

NOW, THEREFORE, I, W. R. Sherrill, Trustee, will on the 30th day of September, 1927 at 12:00 Noon, at the Court House door in the town of Sylva, offer for sale at public auction for cash to satisfy said debt, (interest and cost of sale) the following described tract of land: Situate, lying and being in Mountain Township, Jackson County North Carolina on the waters of Bear Creek; and Dogin Creek which are tributaries of Cullowhee Creek:

BEGINNING on a white oak the eighth corner from the beginning corner 15646 issued to T. E. Carroll and W. R. Bryson, in cove and thence N 35d W., 60 poles to a stake in Tom Coggins' line, said stake being about half way from the Creek to the top of Bear Pen Ridge; thence with Tom Coggins' line West 120 poles to a stake in Vance Bryson's line; thence with Vance Bryson's line S 150 to a stake and pointers; thence West 134 poles to a hickory in a flat gap; thence S. 40d E., 56 poles to a stake in Stiwinter's line; thence with his line to a stake in the line of Grant 140; thence with that line a Northeast course to a stake in the line where the line of Grant No. 15646 crosses said line; thence N. 75 d W. to the beginning, containing 75 acres more or less.

This the 28th day of August, 1927
W. R. SHERRILL, Trustee

TRUSTEES SALE

Notice is hereby given that under and by virtue of the power of sale contained in a certain Deed in Trust executed by D. A. BUMGARDNER and wife, GRACIE BUMGARDNER to Geo. W. Salton, trustee dated the 15th day of April, 1927, and duly registered in the office of the Register of Deeds in Book 101 at page 141 et seq for Jackson County North Carolina, default having been made in the payment of the debt secured by said Deed in Trust and the holder of said note secured thereby having made demand upon the undersigned trustee that he execute the said trust and sell said property for the payment of the note THEREFORE on Monday the 3rd day of Oct., 1927, at 12 o'clock noon at the Court house door in the town of Sylva, Jackson County North Carolina, the undersigned trustee will expose for sale to the highest bidder for cash the following described real estate, lying and being in the county of Jackson Cashiers Township and state of North Carolina and more particularly described as follows:

BEGINNING on a stake on the north bank of the road, the corner of Shupe and Geo. M. Cole and runs south 62 east about 129 feet to a white oak Mrs. D. E. Coffee corner to an old road leading from the M. E. Church to McGuire or Shupe house and corners on a stake then north west direction with said old road the Shupe line and corners on a stake thence south with said Shupe line to beginning as registered in book 101, page 141 et seq. reference to which is hereby made. This the 31st day of August, 1927.

Lespedeza has doubled the yield of corn on the farm of D. A. Lowder of Stanly county. Hardly anything will take its place on a worn out soil, he states.

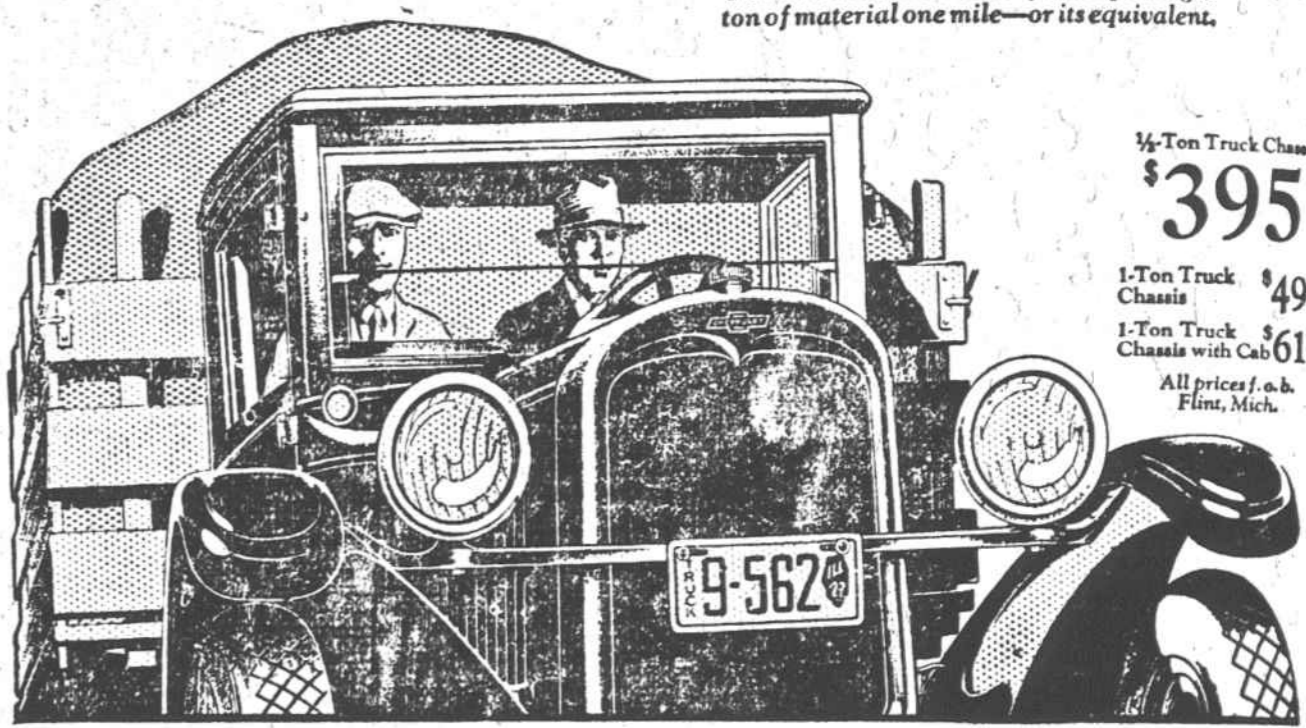
The CHEVROLET for Economical Transportation

World's Lowest Ton-Mile Cost for every line of business

Whether you need a truck for fast delivery over city streets... whether your problem is the transportation of ton-loads over all types of highways... or whether you need a haulage unit for any sort of special purpose—we have a Chevrolet Truck, with a type of body to meet your particular needs, that will give you the world's lowest ton-mile cost*, plus an amazing performance never equalled in a low-priced commercial car!

Here is a type of construction once undreamed-of in a truck at this price—ruggedness, strength and modern design which assure you the long-time, over-all operating efficiency that has made Chevrolet the world's most popular gear-shift truck!

*Ton-mile cost is the cost of transporting a ton of material one mile—or its equivalent.



JACKSON CHEVROLET COMPANY
CULLOWHEE MOTOR COMPANY

THE WORLD'S LARGEST BUILDER OF GEAR-SHIFT TRUCKS

Powerful Evidence

"It's Toasted" gives Lucky Strikes the finest flavor and protects the throat
What 11,105* doctors write about smoking



William Hodge, Favorite Actor of the Stage, writes:

"Until I began to smoke Lucky Strike cigarettes, I had to limit my pleasure in smoking. Now I smoke Lucky Strikes exclusively. My voice, my throat are never affected."

Wm Hodge



*We hereby certify that we have examined 11,105 signed cards confirming the above statement.
LYBRAND, ROSS BROS. & MONTGOMERY
Accountants and Auditors
New York, July 22, 1927.

WHAT is the quality that Mary Garden, David Belasco, Nazimova, Fiske O'Hara, William Hodge, and other famous singers, actors, broadcasters and public speakers have found that makes LUCKY STRIKES delightful and of no possible injury to their voices?

For the answer we turned to medical men and asked them this question:

Do you think from your experience with LUCKY STRIKE cigarettes that they are less irritating to sensitive or tender throats than other cigarettes, whatever the reason?

11,105 doctors answered this question "YES."

These figures represent the opinion and experience of doctors, those whose business it is to know.

"It's toasted"
No Throat Irritation—No Cough.

Christmas

Personal Christmas Cards for individuals or business houses. They are the most attractive form of Christmas Greetings radiating the spirit of good will and good cheer.

We have a line that is the best we have ever shown, engraved, new process printing, or printing. Call and see our samples or phone for Our Representative to call at your home or Office.

JACKSON COUNTY JOURNAL JOB DEPT.



Radios

\$50 TO \$450
Complete

Radios and all radio equipment

Murray
Radio Shop