

**PERSONAL GREETING  
CHRISTMAS CARDS**  
Either Engraved or Printed

The Christmas Greeting with the personal touch.  
We have an exquisite line as was ever shown—and the prices are reasonable.

See Our Samples

**JACKSON COUNTY JOURNAL**

NOW IS THE TIME FOR

# Alcohol

**SYLVA SERVICE STATION**

GULF PRODUCTS HOOD TIRES ACCESSORIES

## Travel by Train

COMFORTABLE  
ECONOMICAL  
SAFE

REDUCED ROUND TRIP  
FARES FOR SHORT  
TRIPS

Ask Ticket Agents

**SOUTHERN**  
RAILWAY SYSTEM

*Everything*  
you WANT or  
NEED  
in America's  
*Fastest Four*

Everything that you want or need in a modern motor car.

Speed swiftly attained, and maintained for hours with effortless smoothness.

Luxury that makes a ride a rest, chiefly because this Four has the longest springbase of any car under \$1000.

Style that draws admiring glances. Stream-line contours. Smart lacquered colors.

Economy at the curb and on the road. 17½ feet are plenty for parking. One gallon of gasoline yields 25 miles at 25 miles per hour.

Low price, and Dodge Brothers special purchase plan, make America's Finest Four today's greatest "buy."

4-DOOR SEDAN  
**\$875**  
F.O.B. Detroit—Full Factory Equipment

M. Buchanan, jr. Garage

**DODGE BROTHERS, INC.**

## OUR CHURCHES

### SYLVA METHODIST CHURCH

Rev. G. B. Clemmer, Pastor  
Schedule of Services.  
Preaching at Sylva every Sunday morning at 11 o'clock except the 4th Sunday and every Sunday evening at 7:30 except the 2nd Sunday.  
Sunday school every Sunday morning at 10 o'clock.  
Epworth League every Sunday evening at 7 o'clock.  
Prayer meeting every Wednesday every 2nd Sunday evening at 7:30.  
Preaching at Balsam every 1st and 3rd Sunday afternoon at 3:15.  
The public is cordially invited to all these services.  
Preaching at Dillsboro every 4th evening at 7:30.

### SYLVA BAPTIST CHURCH

Rev. J. G. Murray, Pastor  
Preaching every Sunday at 11 o'clock in the morning and at 7:30 o'clock in the evening.  
Sunday School at 9:45 Sunday morning, A. J. Dills, superintendent.  
B. Y. P. U. at 6:30 o'clock Sunday evening.  
Prayer meeting at 7:30 o'clock Wednesday evening.  
Choir practice at 8 o'clock each Friday evening.  
Officers' and Teachers' meeting following prayer meeting, each Wednesday evening.  
A very cordial invitation is extended to the public to attend these services.

### BALSAM GROVE BAPTIST CHURCH

Rev. Ben Cook, Pastor  
Preaching Saturday before the first Sunday, at 11 o'clock and the first Sunday, at 11 o'clock.  
Sunday School every Sunday morning, at 10 o'clock.  
Everybody invited to all of these services.

### BLACK MOUNTAIN BAPTIST CHURCH

Rev. Ben Cook, Pastor.  
Preaching Saturday before the second Sunday, at 2:30, Sunday at 11 o'clock.  
Sunday School at 10 o'clock.  
Prayer Meeting Wednesday evening at 7:30  
Everybody is invited to attend all of these services.

### CEDAR BAPTIST CHURCH

Rev. Ben Cook, Pastor.  
Preaching Saturday before the third Sunday, at 2:30; Sunday at 11 o'clock.  
Sunday School every Sunday morning at 10 o'clock.  
Everybody is invited to attend all of these services.

### NEW SAVANNAH BAPTIST CHURCH

Rev. Ben Cook, Pastor.  
Preaching Saturday before the fourth Sunday at 2:30 and Sunday at 11 o'clock.  
Sunday School at 10 o'clock.  
Everybody is invited to attend all of these services.

**QUALLA BAPTIST CHURCH**  
Rev. R. L. Cook, Pastor  
Sunday School every Sunday morning at 10:00 o'clock  
Preaching Third Sunday Morning in each month at 11:00 o'clock.

### WILMOT BAPTIST CHURCH

Rev. Oscar Crisp, Pastor  
Preaching Saturday before the 4th Sunday at 11 o'clock and Sunday at 11 o'clock.  
Sunday School every Sunday morning at 10 o'clock.  
Everybody is invited to attend all of these services.

### CULLOWHEE BAPTIST CHURCH

I. K. Stafford, Pastor  
Sunday School each Sunday 10:00 a. m. Preaching service each Sunday 11:00 a. m. B. Y. P. U.'s each Sunday evening 6:30 p. m. Preaching service each Sunday evening 7:30 p. m. Mid-week service each Wednesday evening 7:30 p. m. Weekly teachers meeting Friday 7:00 p. m.

Expert Watch and  
Jewelry Repairing  
**RAYMOND GLENN**

## MAKES FARM WOODLAND A SAVINGS BANK

Raleigh, N. C., Nov. 23.—By following a system of selective cutting taking only trees of good size, one farmer of Moore county has been able to cut an average of 50,000 board feet of lumber each year for 25 years from his farm of 350 acres.

"W. T. Brown of Spies in Moore county is handling his farm woodlot as it should be handled and is using it as a savings bank," says R. W. Graeber, extension forester at State College. "When he took over his father's farm of 350 acres some 25 years ago, he determined to follow his father's plan of cutting out the mature timber each year during the winter months. Since most of the mature trees had been cut, Mr. Brown was forced to mill the smaller second growth but by carefully selecting only the best trees he has cut over 50,000 board feet of lumber each year for the time he has had the farm in charge. Some sections of the woodlot have been cut over each five years."

Mr. Graeber states that Mr. Brown uses the whole tree. The tops and crippled trees are used for wood and the better stock for lumber. With 275 acres of his land now growing timber, Mr. Brown expects to make a timber harvest each year during his lifetime and to leave more timber on the place than when he began to cut. He harvests the timber during the winter, using his own labor and operating his mill with a little water power on the farm.

This is one excellent example of good timber farming according to Mr. Graeber. It is a method that other landowners in North Carolina should follow because using timber as a farm crop gives employment to labor during idle seasons, enables the owner to use the whole tree and also brings in a steady income year after year. It is a much better method than selling all the timber to a saw mill operator and letting him go through the property at one time cutting the best and wasting the remainder.

## FEED YOUNG HEIFERS DURING WINTER MONTHS

Raleigh, N. C., Nov. 23.—There is a keen demand for good dairy heifers all over the South at the present time and a well grown, typy animal should bring a good price next spring to the dairymen who want to sell.

"To get that well grown, typy animal, however, she must be well fed during the winter," says John A. Arey, dairy extension specialist at State College. "If we assume that the average heifer has reached the age of four to six months, this is the time to give careful attention to winter feeding. One of the main things is to grow out a big frame or skeleton which, in turn, means big capacity. To do this, the heifer should have a liberal amount of lucerne roughage at all times. If possible, part of this roughage should consist of silage. A dairy heifer, six months to one year of age, will consume from five to 15 pounds of silage daily."

The grain ration may consist of a mixture composed of two parts of corn meal, one part bran, one part oats and one part cotton seed meal or linseed meal. A safe rule in feeding this grain mixture is to give a pound a day for the first hundred weight of the heifer and one-half pound for each additional hundred weight. A calf weighing 200 pounds would get one and one-half pounds of the mixture each day.

Mr. Arey states that the number of milk cows in the United States has decreased from 225 per thousand inhabitants in 1916 to 189 per thousand and inhabitants in 1926. During the same period there has been an increase of 16 percent in our population. This explains the present demand for good dairy cows and shows the necessity for raising all heifer calves at this time.

In the past, many dairymen have thought it better to buy their cows as needed rather than raise them. The time has come in Mr. Arey's opinion when his idea must change.

## GET UP NIGHTS? TRY 48 HOUR TEST

If your pep, health and strength are being lowered by frequent night and day calls, backache, bladder weakness, burning or itching sensation, leg or groin pains, why not make the Cystex 48 Hour Test? Don't give up. Don't wait. Get Cystex today. Put it to a 48 hour test. Cost nothing if it does not satisfy, only 60¢ if you soon feel like new, sleep well, full of pep, with pains alleviated. All druggists offer Cystex today, on a money back guarantee. Only 60¢.

## THE WATKINS MAN IS COMING

The Watkins Man will be at your door with this well known and tested line of household and stock remedies, extracts, spices, and toilet articles.

Wait For the Watkins Man

and you will be sure of what you are getting.

**EARLY WILD**

The Watkins Man for Jackson County, representing the J. R. Watkins Company



## Engraved Cards

Season's Greetings  
from  
Mr. and Mrs. D. W. Wrent

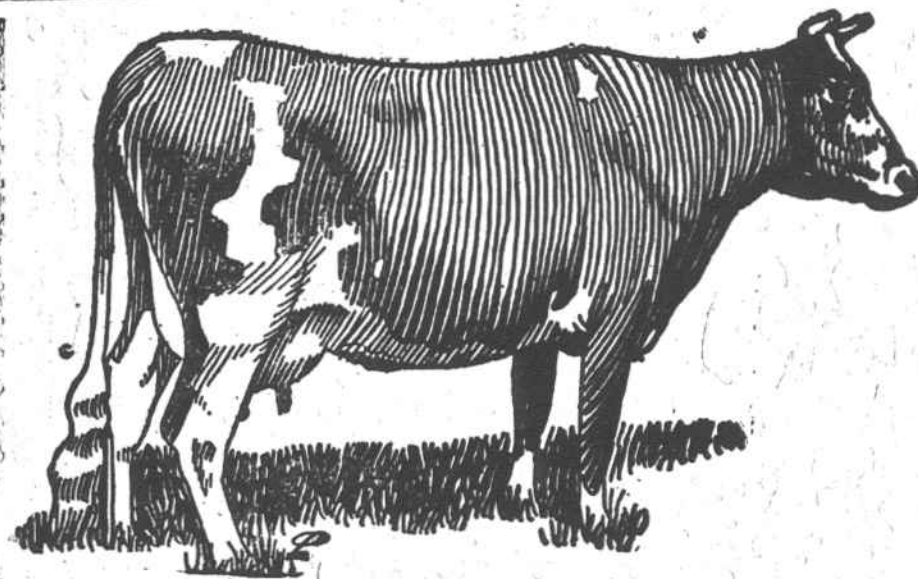
Now is the Time to  
Buy Your

## Christmas Cards



For the people who prefer greeting cards with their own personal signature and message.

Jackson County Journal



## Dairy Feed.

UNION GRAIN  
COTTON SEED MEAL  
HULLS  
SHORTS  
CRUSHED OATS

Alfalfa Hay. One pound of Alfalfa is worth as much as three or four pounds of Timothy, as a milk producer. A full line of Horse, Hog and Chicken Feed. Our prices on Groceries always in line. Flour a specialty. Will sell you low grade flour at a low price, but cannot sell you high grade flour at a low price.

**J. B. Ensley**