

# H. C. Bryson Company

CULLOWHEE, NORTH CAROLINA

Our policy of **HELPING OUR CUSTOMERS** increase their savings is demonstrated in the extremely low prices on our Men's and Boys Suits.

The styles are the markets very latest showing. The patterns are beautiful and workmanship is the best.

We also have some very select extra trousers at attractive prices. Now is the time to get yours.

EXTEND TO US THE PLEASURE OF SHOWING THEM TO YOU

JNO. S. TROTTER, Mgr



Priceless health protection  
*at terms you can afford*

The value of keeping food fresh, sweet, palatable and healthful cannot be appraised in dollars. Yet, Frigidaire prices are low and easy monthly terms can be arranged.

## FRIGIDAIRE

F. W. SWAN

Andrews, N. C. Sylva, N. C.

PRODUCT OF GENERAL MOTORS

BUY AND SELL THROUGH THE JOURNAL

# VALUE

more obvious *with every passing mile*

A Successful Six  
now winning Even  
Greater Success



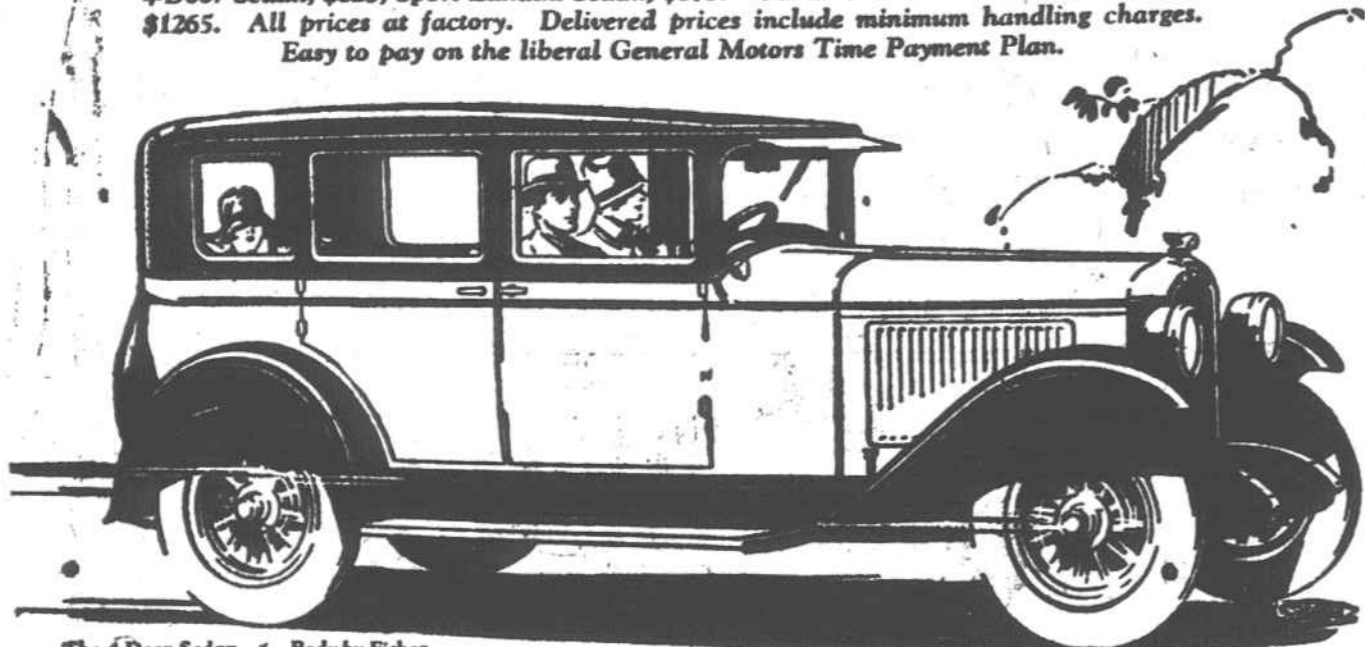
In the New Series Pontiac Six you get all the style and staunchness of Fisher bodies. You get the biggest, smoothest, most flexible engine in any car of its class. And, above all, you get value that grows more obvious with every passing mile!

Years of development on General Motors Proving Ground—oversize dimensions in every vital part—such fine car features as a full-

pressure oiling system—all have contributed to the unmatched stamina and long life for which the New Series Pontiac Six is famed.

A great car when you buy it—and still great with every passing mile—unquestionably the New Series Pontiac Six is the finest, most enduring six-cylinder value ever offered at \$745.

2-Door Sedan, \$745; Coupe, \$745; Sport Roadster, \$745; Phaeton, \$775; Cabriolet, \$795; 4-Door Sedan, \$825; Sport Landau Sedan, \$875. Oakland All-American Six, \$1045 to \$1265. All prices at factory. Delivered prices include minimum handling charges. Easy to pay on the liberal General Motors Time Payment Plan.



The 4-Door Sedan Body by Fisher

SULLOCK MOTOR CO., Sylva

# PONTIAC SIX

PRODUCT OF GENERAL MOTORS

### THE YOHANOLASSEE DRIVE

Winston-Salem Journal. Congressman Doughton is right in his contention that the Great Smoky Mountain and Shenandoah National Parks should be connected by an improved highway. If the Great Smoky Mountain Park, recently established in extreme Western North Carolina and Eastern Tennessee, is to mean much to North Carolina, the State must have dependable highway connection with the Park.

A vital link in this highway is known as the Yohanolassee Drive just beyond Blowing Rock. This is by far the most picturesque highway in North Carolina. For some ten or twelve miles it runs along the very top of the Blue Ridge. No such mountain scenery can be found on any other stretch of road in all the mountains.

The Yohanolassee Drive from Blowing Rock around the base of Grandfather Mountain is at present in a deplorable condition. It should be rebuilt by the State and Federal Governments. This is not a county road, or a district highway. It is primarily a State and National highway. Although short, it touches three counties, Watauga, Caldwell and Avery, and two State highway districts.

If the State is going to put convicts to work on any public highway, they should be put to work on this stretch of road. The Federal Government should co-operate with the State and the two ought to rebuild the famous Yohanolassee Drive without expense to counties or districts.

All North Carolina should be vitally interested in the construction of this road. For no North Carolinian should visit the mountains without seeing the Yohanolassee Drive. Nobody has really seen the mountains of North Carolina until they have seen them from this scenic highway. This drive could be made a tremendous asset to the whole state. If properly advertised, the Yohanolassee Drive would bring tourists to the State from all over Eastern America, and the Middle West.

### WINNERS ANNOUNCED IN STATE GARDEN CONTEST

Raleigh, N. C., May 2.—Winners in the year 'round state garden contest for the season of 1927-28 have been decided upon by the horticultural and home demonstration workers of the State College of Agriculture under whose supervision this contest was conducted.

There were 2,037 individuals in 20 different counties entering the contest last spring. Each of the five districts under which extension work is administered was represented and the sum of \$350 in cash was awarded to the prize winners of the different districts. Under the plans of the con-

test as announced last year, a county prize of \$25 was offered for the county making the best record in a district. This prize was awarded to the county council of farm women sponsoring the movement under the direction of the home agent. Three prizes of \$20, \$15 and \$10 were also offered to individuals in each of the

five districts. The money used in awarding these prizes was donated to the Extension Service by the Educational Bureau of the Chilean Nitrate of Soda.

According to E. B. Morrow, extension horticulturist, Buncombe County won the prize for the mountain district with Mrs. P. D. Car-

enter of Forest City, Mrs. C. F. Cline of Gilkey and Mrs. Grant Allen of Union Mills winning the three prizes for individuals.

Farmers of Robeson county expect to sell over \$25,000 worth of poultry in cooperative market shipments before the season ends this spring.

# Lyric

Thursday  
TODAY  
"A MILLION BID"

FRIDAY  
"THE MAIN EVENT"

SATURDAY  
"THE GAY RETREAT"

MONDAY and TUESDAY  
Will Rogers in Congress  
"A TEXAS STEER"

# Rodeo

Thursday  
TODAY  
Ken Maynard

"FIGHTING COURAGE"

Friday and Saturday  
Al Wilson

"SKY HIGH SAUNDERS"

Buster Brown Comedy  
Chapter 4  
"THE CRIMSON FLASH"

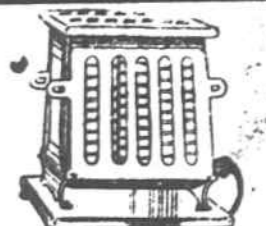
MOTHER'S DAY



MOTHER'S DAY



ELECTRIC IRONS  
Every well known brand of electric iron in stock. Electric irons make ironing day pleasant.  
\$5.00



ELECTRIC TOASTERS  
Make good toast quickly. We have electric toasters in a wide range of styles. Eliminate all risk of burns.  
\$4.00

Making  
Household Tasks  
Easier to Perform!

Give your mother a practical gift this Mother's Day—something that will lighten her household tasks. We offer many new electrical home appliances which are efficient, time saving and convenient. Mother will be pleased with nothing so much as with something for the home. It is always best to give useful gifts.



ELECTRIC FANS  
\$7.00 to \$12.00

THE  
WINCHESTER  
STORE  
OF SYLVA

MANY OTHER  
THINGS  
TO  
MAKE LIFE  
EASIER  
FOR  
MOTHER