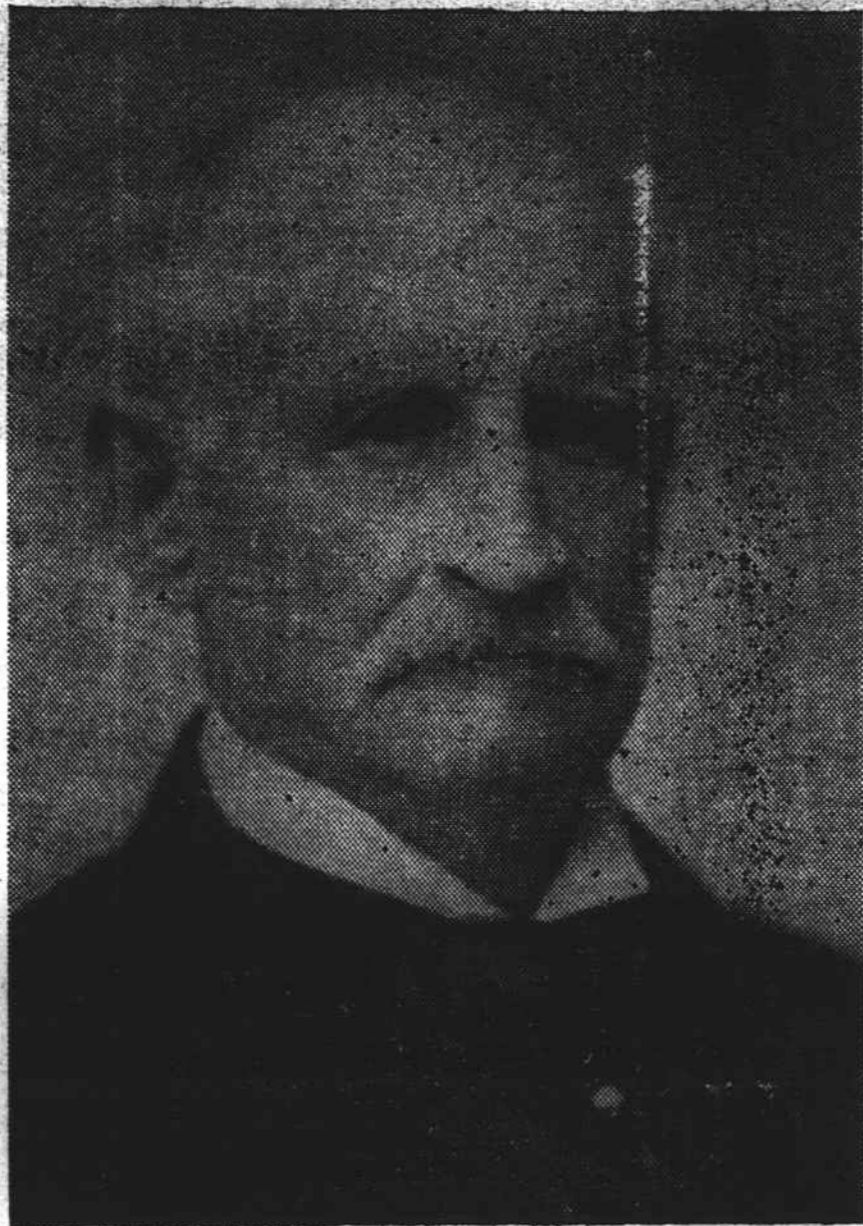


When Charles J. Harris came to Jackson County, it marked the beginning of the industrial era in Sylva.



Col. Harris may well be styled the father of industry in Sylva.

The Harris Clay Company, the Blue Ridge Locust Pin Company, the Dillsboro and Sylva Electric Light Company, the Harris Tannery, the Harris Granite Quarries Company, and many other Harris industries have contributed to the wealth of Sylva, Dillsboro and Jackson County.

Col. Harris took a deep interest in the welfare of his adopted county, and his capital and his fertile brain worked for half a century in the interest of the progress of Sylva and Jackson County

No story of the 50 years of progress would be complete without a fitting tribute to the foresight, the ability and the contribution that this adopted Jacksonian has made.

S. W. Enloe, a native son of Jackson has been associated with Col. Harris almost from the beginning, and he now worthily carries on the work that Col. Harris began, in promoting the Harris industries, and through them, building Jackson County and Sylva

