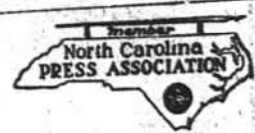


The Jackson County Journal  
Published Weekly By  
**DAN TOMPKINS**  
DAN TOMPKINS, Editor

Entered as second class matter at  
the Post Office at Sylva, N. C.



## TODAY AND TOMORROW

(Continued from first page)

business. The Long scheme kept the public completely in the dark as to how much money the politicians were collecting from the people and how they were spending it.

The procession of political grafters that has recently started for the Louisiana Penitentiary is evidence that the people have waked up to the fact that they were being robbed, and how. But until the state resumes the publication of official reports of its financial matters, there's always a chance of something being put over.

### ADVERTISERS

Every once in a while somebody comes out with a book or a magazine article trying to tell people that advertising is an economic waste; that if it wasn't for the cost of advertising they could buy things cheaper. The precise opposite happens to be true, as every publisher and every advertiser knows. If it wasn't for advertising no concern could do a large enough volume of business to sell his product at reasonable prices.

Some of these same wrongheaded critics contend that newspapers are under the domination of advertisers. I've run several newspapers, and have studied the inner workings of the business for years. I've never encountered an instance of a newspaper adapting its editorial policy to the whims of advertisers.

One newspaper I worked on had a large advertiser who disliked the paper's attitude on a certain matter and pulled out his daily full page advertisement. A year later he offered advertising copy again and the publisher refused to let him in on the paper.

### Mrs. Cowan Hostess To

**Twentieth Century**  
Mrs. Mary Cowan will be hostess to the Twentieth Century Club, on Thursday, December 14, at which time Rev. A. P. Ratledge will speak on the subject of his visit to Bethlehem.

### State College Offers Data On Fertilizers

Two circulars containing detailed recommendations of approved fertilizers for tobacco and other crops grown in North Carolina are available free upon application to the Agronomy Department of the North Carolina Agricultural Experiment Station at State College, announces Prof. C. B. Williams, head of the department.

One of the circulars, No. 116, contains information on approved fertilizers for all crops grown in the State, while the other, No. 119, gives in more detail recommendations for tobacco fertilizers exclusively.

"All of the recommendations are based upon the assembled judgment of field workers of the Department of Agronomy," Prof. Williams said. "They have a vital touch with the field fertilizer experimental work which has been conducted in the State, including demonstrations conducted by the State College Extension Service through county farm agents and cooperating farmers."

"High grade, well-balanced fertilizers will usually cost more per ton than will low grade poorly proportioned goods," the agronomist continued, "but with tobacco of all crops, costing so much more per acre to produce, ill proportioning of the essential plant nutrients from the best suited materials can least be afforded."

He also stressed the importance of applying the correct amounts of fertilizers per acre for different soil types and conditions, and the value in using fertilizer at the proper time and in such a manner as to give the best results.

### State College Answers Timely Farm Questions

**QUESTION**—What is the best green feed for poultry in winter?

**ANSWER**—Cured alfalfa hay, lespedeza, or clover hay make good greens for winter use provided the green color is retained. Alfalfa leaf meal, if green in color, also makes a satisfactory feed, but should constitute more than ten percent of

the mash. This feed is much preferred to alfalfa meal which has a high fiber content, but neither is as satisfactory as green alfalfa hay. All the hays should be fed in racks; the birds will eat only the leaves and the stems can then be thrown in the litter.

**QUESTION**—Should shade trees be pruned in winter the same as fruit trees or shrubs?

**ANSWER**—No! Many beautiful groves are ruined each year by quick tree surgeons or by superstitious persons. Shade trees should be allowed to form their natural shape and, if there are too many trees, thin them out rather than cut them back. For scale control, the trees should be sprayed with lime-sulphur or miscible oil. The same treatment should be applied to fruit trees and shrubs. Be sure that the air is still and not too cold when the spray is applied.

Farmers of North Carolina have their choice of 29 different forage crops, says E. C. Blair, agronomist of the State College Extension Service, although some of them are better adapted to certain soil types and conditions than others. "We are extremely fortunate in this respect," Blair stated, "but we are not taking full advantage of our opportunities."

Summer legumes include soybeans, cowpeas, annual lespedeza, peanuts velvet beans, and kudzu. Perennial legumes are alfalfa, red clover, sweet clover, alsike clover, and lespedeza sericea. Winter legumes include crimson clover, vetch, Austrian winter peas, and bur clover. Small grains are oats, barley, wheat, and rye. Perennial grasses are timothy, orchard grass, reedtop, and tall oat grass. Annual grasses include sorghums, foxtail millet, Japanese millet, Johnson grass, sudan grass, and crabgrass.

Seven of these—soybeans, velvet beans, annual lespedeza, barley, sweet clover, Austrian winter peas, and lespedeza sericea—have been introduced into the State during the present century, Blair said.

"We are making progress, but not enough," he declared. "We are not growing enough forage for the number of livestock we now have, and we should be growing enough, not only for these livestock, but for a great many more."

The extension specialist reported that the acreage of hay in North Carolina has risen from 618,000 in 1925 to 1,000,000 in 1939, an increase of about 60 percent. Lespedeza was introduced into the State in 1914 by T. J. W. Broom, farm agent of Union County, and the 1939 acreage of les-

## Groping Through



### BUYER MEETS SELLER

Lespedeza in the State is 911,000, exceeded only by corn as the biggest crop in the State in acreage planted. "When more of our farmers produce forage crops, we will have more livestock and poultry, and a consequently better standard of living," Blair concluded.

### Slays Former Suitor



DALLAS, Tex. (AP)—Shown as she was questioned at Police Headquarters here is Corinne Maddox, 26, daughter of Roger Maddox, a member of the Board of the National Bank of Commerce, who shot and fatally wounded a former suitor. Blazing away with two guns the girl followed the man as he ran on a street of downtown Dallas. In her reported confession to police Miss Maddox said the attorney caused her great mental anguish. Coffman was charged with assault to kill when he allegedly attacked Miss Maddox last May.

### Cigarette Shield



ENGLAND... An A. R. P. worker with his home-made shield to enable him to smoke while working for the "All Clear," without having any glow come from his cigarette. The covering is an aluminum tube with vent holes and it fits onto the holder.

UNEXPECTED VACANCY in Southeast Haywood County. Dealer now selling there finds it necessary to close up. Trade well established. Has sold there since 1934. Good opportunity for industrious man between 25 and 50 with car. Write Rawleigh's, Dept. NCL-25-201, Richmond, Va.

### WHY GAMBLE

on a watch you never heard of when you can buy a real

*Ingersoll*

for so little money. The Ingersoll Buck costs only \$4.00. Other pocket and wrist models to \$3.95.



BUCK \$4.00

\*\*\*\*\*  
★ **Help your teeth shine like the stars... use Calox Tooth Powder** ★  
\*\*\*\*\*



Many of Hollywood's brightest stars use Calox to help bring out the natural lustre of their teeth—and you can rely on Calox too. Pure, wholesome, pleasant-tasting, approved by Good Housekeeping Bureau. Five tested ingredients, blended according to the formula of a foremost dental authority, make Calox an economical tooth powder that can't harm tooth enamel. Get Calox today at your drug store. Five sizes, from 10¢ to \$1.25.

Copyright 1939 by Wallace Auto Parts Company

### TIRE SALE SPECIAL PRICES

On a large number of Tires just bought from Smoky Mountains Park

- 403 Tires
- 32x6
- 6.50x20
- 6.00x20
- 30x5
- 7x20

GREAT TIRE BARGAINS  
**WALLACE AUTO PARTS COMPANY**  
CULLOWHEE ROAD

## Your Cold Cough Is Tough On Your Friends, Too!

You can't blame your friends for wishing you would go somewhere else with your cold and cough; colds are highly contagious and cause more loss of time from illness than all other diseases combined. Get Mentho-Mulsion. Mentho-Mulsion is guaranteed to stop your cold cough immediately and rid you of that cough entirely, quicker than any medicine you ever tried, or every cent of the cost will be refunded without question.

Mentho-Mulsion is the formula of the dean of pharmacy of a large mid-western university. It contains vitamins A and D to build up cold resistance, and seven essential

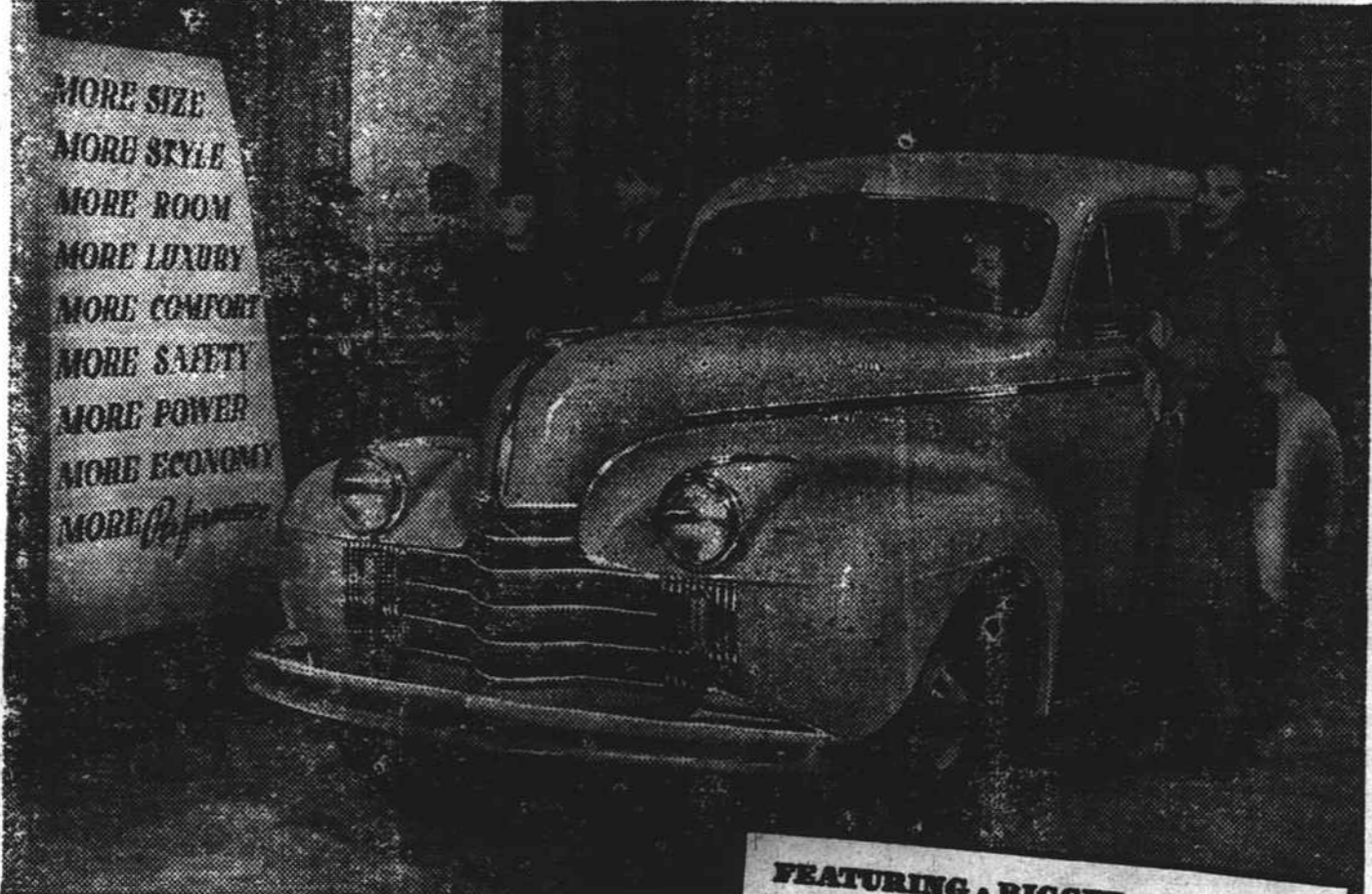
healing oils and unguents, with highest quality beechwood creosote for penetration. Genuine California fig syrup gives Mentho-Mulsion a taste you will like and makes it cling to your irritated membranes; so its healing ingredients act more quickly and effectively.

Feverish, irritated air passages are fine nesting places for stray germs, including even such dangerous ones as flu, pneumonia and tuberculosis. It is dangerous to take a chance with a cough due to a cold.

Mentho-Mulsion is endorsed by leading physicians and guaranteed by its manufacturer. It registers everywhere.

**Sylva Pharmacy**

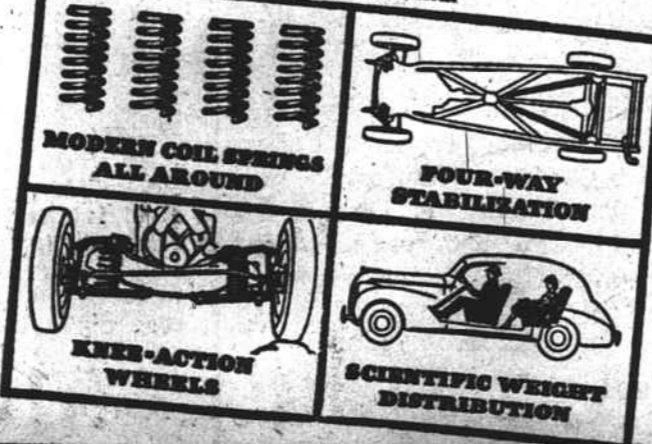
## THE CAR THAT HAS *Everything* BIGGER AND BETTER!



- MORE SIZE
- MORE STYLE
- MORE ROOM
- MORE LUXURY
- MORE COMFORT
- MORE SAFETY
- MORE POWER
- MORE ECONOMY
- MORE...

### FEATURING A BIGGER AND BETTER RHYTHMIC RIDE CHASSIS!

Oldsmobile's the smoothest riding car on any road—the only car with the famous Rhythmic Ride—the lowest priced car with modern coil springs all around.



A SMASH-HIT from coast to coast—that's the new Oldsmobile for 1940! It's bigger—in length, in breadth, in roominess. It's better—in styling, in performance, in economy. It gives you new Hi-Test Safety Plate Glass and Sealed-Beam Safety Headlamps. And it's available in three new series. The big, 95 H. P. Sixty is priced in the low-price field. The stunning new Seventy sells at a popular price. The luxurious, new Custom 8 Cruiser is the finest Eight ever offered at medium price. Come in for a thrilling trial drive!

PRICED FOR EVERYBODY  
Coupes, \$807 and up. Sedans, \$853 and up. Delivered at Lansing, Michigan. Car illustrated: Sixty 4-Door Touring Sedan, \$899. Prices include Safety Glass, Chrome Window Reveals, Bumpers, Spare Wheel, Tire, Tube, Dual Trumpet Horns, 2 Windshield Wipers, Vacuum Booster Pump, 2 Sun Visors. Transportation based on rail rates, state and local taxes (if any), optional equipment and accessories—extra. Prices subject to change without notice. General Motors Installment Plan. A GENERAL MOTORS VALUE

AMERICA'S BIGGEST MONEY'S WORTH

## OLDSMOBILE

Allison Motor Company, Sylva, N. C.