

In the best advertising medium in the Piedmont section of North Carolina...

The Morganton Herald

VOL. XII.—NO. 4

MORGANTON, N. C., THURSDAY, APRIL 9, 1896.

PRICE FIVE CENTS.



THE BEST SPRING MEDICINE

is SIMMONS LIVER REGULATOR. Don't forget to take it. Now is the time you need it most to wake up your liver.

PATENTS C. A. SNOW & CO. OFF. PATENT OFFICE, WASHINGTON, D. C.

EVERY \$

YOU SPEND WITH KIBLER & CO.

brings its full return. Every purchase made of us is appreciated.

We do not assume that you cannot buy elsewhere, but we do claim that you can save money by buying

DRY GOODS, SHOES

—AND— GROCERIES

FROM US.

M. B. KIBLER & CO., THE CHEAP STORE.

—FOR— STAPLE AND FANCY GROCERIES,

Flour, Meal, Bacon, Hams, Lard, Sugar, Coffee, Rice, Molasses, Kerosene Oil, Canned Goods, Cheese and Crackers, Cakes and Candies, Fruits, etc., and

COUNTRY - PRODUCE

—GO TO—

T. L. HEMPHILL,

(One Door Below Postoffice.)

I have also recently added a line of

SHOES

For both Ladies and Gentlemen, and am selling them at low prices.

I will appreciate a share of your patronage, and promise full value for your money.

Respectfully,

T. L. HEMPHILL

Mortgage Sale.

By virtue of a power of sale contained in a certain trust deed executed by Lida E. Garrison and John W. Garrison to W. C. Ervin on the 10th day of September, 1895...

MORGANTON AND ENVIRONS

A Prosperous, Progressive and Beautiful City.

Wealth, Culture, Refined Society, Financial Interests, Natural Advantages, Minerals, and Agricultural Productions.

UNSURPASSED AS A HEALTH AND PLEASURE RESORT.

Grand Location, Delightful Climate, Rapid Advancement of Trade Industries, and Unparalleled Advantages Presented to the Capitalist, the Manufacturer and the Artisan.

MORGANTON is one of the leading cities in Western North Carolina and the county seat of Burke county. It contains about four (4,000) thousand inhabitants. Some thirteen (13) years ago, the State authorities, recognizing the convenient and accessible location, the healthful and salubrious climate of this truly delightful mountain city, decided to establish the Western Division of the Hospital for the Insane within its borders.

of North Carolina's health department would not have invested so much of the Commonwealth's funds, and located two such important branches of her benevolence here had not the climate and surroundings been of the highest value as curative agents; and not only is this a perfect paradise for invalids, but for all those in search of pleasure, and diversion as well.

The People Are for the most part direct descendants of the sturdy Scotch, English and German colonists who first came to this (at that time) "Wilderness" from Pennsylvania, Maryland and Virginia, augmented by "bold spirits" from the Scotch-Irish settlements on the Cape Fear river, in this State, and having early become imbued with a high sense of religious and educational advantages, their benignant influences have been felt and fostered through each succeeding generation, producing the present eminently pure, moral and cultured Society.

nity from the disadvantages of irregular weather. Clover and grasses flourish in the strong clay soils, and both Irish and sweet potatoes yield abundantly. Cotton is a staple crop of adjoining counties of Cleveland and Catawba, but only a few bales are raised in Burke, the elevation of its area for the most part being too great. Tobacco of the "Golden" quality is here produced in its most valuable weights and colors, the Vienna Exposition having awarded first premium to Burke county tobacco.



face of the South Mountains in Burke. In the future this phenomenal section must become of inestimable value; for no where is there such certain assurance of the security and maturity of peaches and other tender fruit crops, or of the grape; to the successful cultivation of the grape the soil and the general conditions of the climate offer numerous inducements. The foregoing needs no comment, the intelligent reader readily understanding the many advantages possessed by such a section As to minerals, the county is ex-



STATE SCHOOL FOR THE DEAF AND DUMB, MORGANTON, N. C.

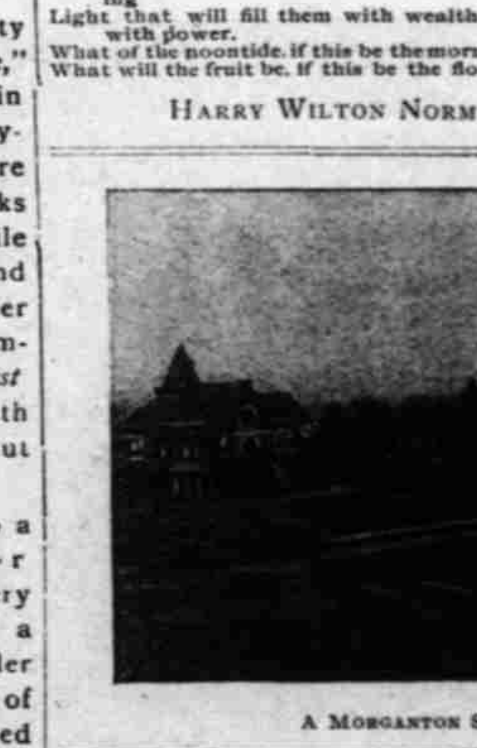
dance that it has been shipped by the carload to be used in manufacturing sandpaper. Other minerals found are iron ore, magnetic iron, limonite ores, lime stone, magnetite and hematite, free from phosphorus and sulphur, and which yield from 60 to 80 per cent. of iron. Kaolin, corundum and graphite largely exist in the county and there are also large deposits of talc. The mineral wealth of the county is now attracting wide spread attention, especially in the gold mining districts, and the near-

the deaf and dumb; social and literary clubs, handsome residences, refined and hospitable people and many women peerless in point of purity, beauty and cultivated, stylish deportment. To sum it all up, with abundant water power, cheap fuel, cheap labor (because of the small cost of living), with fertile soil, a healthful climate and lovely women, "Morganton and environs" present a perfect "El Dorado" to the capitalist, the manufacturer, the planter, the workingman, and—the

vine blessing to the community—giving employment to a large number of workers at good wages, besides utilizing material that, before its establishment, was of no value whatever, and placing money in the pockets of needy people who previously had no means of earning it—we refer to the gathering of chestnut-oak bark. Heretofore this timber was not marketable at any price, while now hundreds and thousands of tons of this bark are being annually consumed and is supplied by the small farmers in the surrounding country from their own forests at a good profit to themselves; and in order to equally distribute this expenditure of funds among the people of the county the Tanning Company each season (spring) places contracts for a certain number of tons at a given price with each eligible applicant until their year's stock of bark is laid in. Last season this business was divided up among nearly two hundred and fifty people, and this spring the company received over two hundred propositions for contracts in a single day. It will be readily seen what this means to the small farmer. It furnishes him means to carry on his crop and, too, at a time when his resources are at the lowest ebb—being exhausted by expenses incurred through enforced idleness during the winter months, etc. The people do not literally "rise up and call it blessed," but that is the sentiment entertained toward the Burke Tanning Company, for a large share of which feeling its popular general manager, Mr. W. F. Camp, comes in, who was instrumental in locating the enterprise here, and who, by his many sterling qualities, has firmly established himself in the esteem and respect of his adopted people—nor could his position in the community be supplied by any other.

future will witness a wonderful development in that field. Touching lightly upon the timber resources, we will state that one (1/3) third of the county's area, 620 square miles, is still virgin forests, and consists mostly of oak, hickory, poplar and yellow pine; with white pine, chestnut, maple, locust, birch and other hardwood in the mountains. There are strips of fir trees along the higher mountain streams, and in some sections wild cherry, mountain mahogany, black walnut and giant sycamore trees; also the rock chestnut oak, so valuable for its tan bark, is found on all mountain sides. The water power is unlimited.

Strictly speaking, Burke county is not a "Sportsman's Paradise," but game is still sufficiently "in evidence" to afford keen enjoyment either with gun or rod, there being good quail shooting, ducks and grey squirrels in season, while in the mountains can be found wild turkeys, ruffed grouse, deer and black bear in sufficient number to make the hunting "interest ing." The streams are alive with the finny tribes, mountain trout being very plentiful.



A MORGANTON SUBURBAN RESIDENCE STREET.

Morganton has, in addition to a progressive, up-to-date set of merchants, the largest steam tannery in the South, a cotton factory, a smoking tobacco factory, roller mill, two newspapers and one of the most modern and best equipped book and job printing establishments in the State, woodworking and building supply mills, a model telephone system, one of the best electric light plants in the country, paved streets, a good sound bank, a progressive land and improvement company, six elegant churches, three female and two male schools, Masonic and Pythian lodges, an immense hospital for the insane, a school for

SALLY MICHAEL SMOKING TOBACCO COMPANY, LAXTON BROTHERS (SUCCESSORS). This widely known and justly famous brand of smoking tobacco was first manufactured more than ten (10) years ago by the above company, founded for that purpose, but about fifteen months since the business passed into the hands of the Messrs. Laxton Brothers, and later was purchased by Mr. Ralph R. Laxton, who is now sole owner. The quality of "Sally Michael" is kept fully up to the standard of excellence enjoyed by that popular brand. The local demand and trade in surrounding towns being something immense, it is also extensively handled from Washington, D. C., to Dallas, Tex., and as far west as Salt Lake City, Utah. So popular is it, that orders are received daily from individuals for



THE BURKE TANNING COMPANY

was established here about five years ago. It is the largest financial interest in Morganton and one of the most extensive tanneries in the South, being a steam plant equipped with all the latest machinery and devices, and conducted on the most modern, scientific and intelligent principles. This mammoth industry is a gen-

Do You Use Printed Stationery? If you do, it will pay you to get samples and prices from us before placing your orders.

ROYAL BAKING POWDER Absolutely Pure. A STREAM OF FINEST BAKING POWDER. Highest of all its kind.

THE ASHEVILLE WOODWORKING CO. MANUFACTURES ALL KINDS OF BUILDING MATERIAL, INCLUDING DOORS, SASH, BLINDS, MOULDING, STAIR WORK, MANTELS, ETC.

Public Buildings, Banks, School Houses & Stores A SPECIALTY.

WE DO THE HIGHEST GRADE OF WORK AND ALSO LOWER GRADES TO SUIT CUSTOMERS.

SEND - FOR - ESTIMATES. ASHEVILLE WOODWORKING CO., BOX 296, ASHEVILLE, N. C. W. G. RICH, Superintendent.

FIRE INSURANCE! We write policies on all classes of desirable risks in the following standard companies: N. C. HOME of Raleigh; CONTINENTAL of New York; PENNSYLVANIA of Philadelphia, DELAWARE VA. FIRE AND MARINE of Richmond; MECHANICS AND TRADERS' of New Orleans. AVERY & ERVIN, HERALD Building, Morganton, N. C.

CATARRH LOCAL DISEASE and is the result of cold and sudden climate. It can be cured by a pleasant remedy which is sold directly to the afflicted by mail. ELY'S CREAM BALM is acknowledged to be the most thorough cure for Nasal Catarrh.

BUY YOUR WALL PAPER MAIL AT WHOLESALE PRICES. 100 New designs in. Warranted to give satisfaction. Send for color book and price list.

PARKER'S HAIR BALM. HINDERCORNS. FOR SALE.

Ole Hundred and Thirty-One acres of timbered and mineral land in Burke county, near Table Rock. It contains a fine grind stone quarry, almost inexhaustible; good specimens of gold; land is all heavily timbered, and two thirds of the land when cleared can be cultivated. The timber and tan bark on the land will pay for it at the price asked. Will take lumber, shingles and laths as payment; will give some one a bargain. Title perfect. E. L. PROPST, Lumberman, Charlotte, N. C. march 12-2u S. J. ERVIN, Attorney-at-Law. MORGANTON, N. C. Practices in all the courts of the State where his services may be required, and special attention given to all business. Feb 13 17