

Comin' Atcha

# Keep it in Perspective

*Despite losing so many starters to graduation and injuries, UNC is trying to fulfill rising expectations*

Expectations are never met. They are always too high or too low, but never directly on target.

In the case of the 1994 North Carolina football team, it's really hard to tell which one.

Has this team underachieved? Or has it overachieved?

Which way you see it depends upon your perspective: fans and the media or coaches.

The team has failed to put up the same numbers it did last year and lost for the second consecutive season in Charlottesville. The Johnson & Johnson tandem has failed to run for the yards it did in 1993.

From the fans' standpoint, the Tar Heels have had a disappointing season. The Peach Bowl, which people went bonkers over in 1992, is no longer good enough.

To the UNC coaching staff, however, this team is a smashing success. It is a tribute to the program's level of recruiting and coaching.

The squad lost 14 of 22 starters to graduation. That was before the injuries. Now mark off four more starters — right guard Scott Overbeck, split end Gray Bovender, cornerback Tim Smith and most recently, offensive lineman Pat Conneely.

The first three were lost for the year in

a one-week span in the preseason. Conneely has played this season, but the games he lost to injury, combined with other various lesser injuries on the offensive line have created numerous problems.

The graduation losses mixed in with the injuries left North Carolina with two very inexperienced positions — offensive line and the secondary.

Both have been scrutinized this year, but as the season comes to a close, the players at those positions are improving and the future looks bright.

The offensive line is controlling the line of scrimmage almost as well as last year's edition.

The Maryland and N.C. State games have been a case in point. Especially against the Wolfpack, where redshirt freshmen Jeff Saturday and Mike Hobgood showed that they were ready for action.

How far has Hobgood moved up the depth chart? In August he wasn't even listed on it. The UNC media guide said that he will be "competing for playing time at right guard." Playing time? He's starting these days.

The much-maligned secondary has faced similar problems. Jimmy Hitchcock was supposed to play free safety this year, but Smith's injury forced him to move back to the corner.

BY JUSTIN SCHEEF  
SPORTSATURDAY EDITOR



Then Hitchcock went down, leaving only one returning starter in the defensive backfield, strong safety Sean Boyd. Omar Brown, Terry Billups and Reggie Love got a chance to prove themselves a year earlier than expected. This will ease the transition next year.

Even though Hitchcock returned after only missing two games, it has been a year of learning for the young defensive backs. After giving up the big play to opponents most of the year, last week the Tar Heels practically shut out N.C. State's Eddie Goines, one of the nation's top deep threats.

All this bodes well for the future. With these young players getting a chance to prove themselves this year, it should provide UNC with unbelievable depth in the 1995 campaign.

But it is still 1994 and some expectations are still unfulfilled. When trying to decide whether North Carolina has over or under achieved, just keep it in perspective.

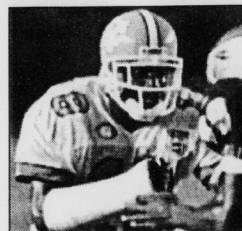
**RANDOM THOUGHTS**

Duke's undefeated run was kind of fun while it lasted. It was like cheering on a high school team.... This goal post tearing down epidemic is just plain stupid. But you have to give credit to the athletic department for installing new fan-resistant, bend-but-don't-break goal posts.

# DTH SportSaturday

COVER STORY

## 8 Talking tough and hitting hard



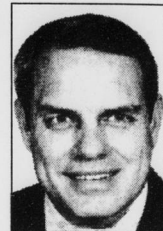
Despite playing with a broken arm, North Carolina cornerback Jimmy Hitchcock is one of the most respected cornerbacks in the nation.

BY CHAD AUSTIN

## 10 Unfinished business

Rice coach Ken Hatfield left Clemson under fire despite the fact he had helped a team rebound academically and gain a bowl berth. After a year, Clemson is struggling and Rice is bowl-bound.

BY ADAM DAVIS



FEATURES

4-6 ACC/NCAA Gameday: Previewing today's games

7 Steinbacher and Holliday find life after football

9 Leon Johnson wants his 1,000 yards

DEPARTMENTS

12-14 Non-revenue sports pages

15 N.C. State photo essay

16 SportStats: ACC, UNC and Clemson statistics

Cover photo by Katie Cannon

STAFF

SPORTS EDITOR Steve Robblee  
DTH SPORTSATURDAY EDITOR Justin Scheef

ASSISTANT DTH SPORTSATURDAY EDITORS  
Chad Austin and Alison Lawrence

ASSISTANT SPORTS EDITORS  
Adam Davis, Robbi Pickeral and James Whitfield

STAFF WRITERS  
Jacson Lowe, senior writer; Andy Alley, John Ashley, Aaron Beard, Todd Graff, Jonathan Hart, Sarah Manekin, Erin Parrish, Jill Santopietro, Heidi Schmitt, Scott Weaver and Lisa Zaranek.

THE DAILY TAR HEEL EDITOR  
Kelly Ryan

PRODUCTION MANAGER Stacy Wynn  
PHOTO EDITOR Katie Cannon

**Business and Advertising:** Kevin Schwartz, director/general manager; Chrissy Mennitt, advertising director; Leslie Humphrey, classified ad manager; Holly Aldridge, business manager; Tiffany Krueger, advertising manager.  
**Business Staff:** Jenny Schwartz, assistant manager. **Classified/Customer Service:** Melissa Allam, Gwendolyn Blackburn, Dodie Brodsky, Michelle Byrd, Grace Consacro, Shannon Hrdlicka, Jason Lowe, Leah Richards, Allison Saunders, Holly Stepp, Mary Tate and Justin Williams, representatives. **Display Advertising:** Kristen Boyd, Michelle Clifton, Amy Cojak, Tiffany Krueger, Gidget Lamb, Megan Stephenson, Kathy Trent and Ashley Widdis, account executives; Nina Hashway and John Logan, assistant account executives; Tina Collier, office assistant. **Advertising Production:** Bill Leslie, manager/system administrator; Richard D. Allen, Laura Bensen, John Mims and Denise Walker, assistants.

DTH SportSaturday is published by the DTH Publishing Corp., a non-profit North Carolina corporation, on home football Saturdays. Advertisers should call dial 962-1163 between 8:30 a.m. and 5 p.m., M-F. Editorial questions should be directed to 962-0245/0246.

Office: Suite 104 Carolina Union  
Campus Mail address: CB# 5210 box 49, Carolina Union  
U.S. Mail Address: P.O. Box 3257, Chapel Hill, NC 27515-3257

# DTH SportSchedule

## Division I Football

**FRIDAY, NOV. 4**  
**EAST**  
Rhode Island (2-6) at Hofstra (7-1), (n)

**TODAY**  
**EAST**  
Air Force (5-3) at Army (3-5)  
Connecticut (3-5) at Boston U. (7-1)  
Youngstown St. (7-0-1) at Buffalo (3-5)  
So. Connecticut (4-4) at Central Conn. St. (4-4)  
Lafayette (2-6) at Colgate (2-6)  
Columbia (4-2-1) at Dartmouth (3-4)  
Brown (4-3) at Harvard (4-3)  
Bucknell (4-4) at Holy Cross (1-7)  
Canisius (2-6) at Iona (2-4)  
Delaware (5-3) at Lehigh (4-3-1)  
St. Francis, Pa. (2-5-1) at Marist (5-3)  
Northeastern (0-8) at Massachusetts (4-4)  
Stonehill (6-2) at Monmouth, N.J. (5-2)  
Penn (6-0) at Princeton (5-2)  
Bethany, W.Va. (3-4) at Robert Morris (5-1-1)  
Temple (2-6) at Rutgers (4-3-1)  
Duquesne (4-3) at St. John's, NY (6-1)  
Georgetown, D.C. (3-4) at Siena (2-5)  
Miami (6-1) at Syracuse (6-1)  
Kutztown (4-4) at Towson St. (5-2)  
West Chester (7-2) at Villanova (4-5)  
St. Peter's (1-6) at Wagner (4-4)  
Cornell (6-1) at Yale (3-4)

**SOUTH**  
Butler (7-2) at Alabama-Birmingham (5-4)  
Liberty (3-5) at Appalachian St. (6-2)  
East Carolina (5-4) at Auburn (8-0)  
Middle Tennessee St. (6-2) at Austin Peay (3-5)  
Knoxville (1-6-1) at Bethune-Cookman (3-6)  
Tennessee-Chattanooga (2-6) at Citadel (3-5)  
Evansville (2-6) at Cumberland, Tenn. (5-2)  
Centre (6-2) at Davidson (1-6)  
North Carolina A&T (6-3) at Delaware St. (4-4)  
Virginia (6-1) at Duke (7-1)  
Marshall (8-1) at East Tennessee St. (4-4)  
Southeast Missouri (6-3) at Eastern Kentucky (7-2)  
Southern Mississippi (5-4) at Florida (6-1)  
Georgia Southern (4-4) at Furman (3-5)  
Florida St. (6-1) at Georgia Tech (1-6)  
Alabama St. (4-4) at Grambling St. (8-0)

Texas Southern (3-5) at Jackson St. (5-3), (n)  
Vanderbilt (4-4) at Kentucky (1-7), (n)  
Alabama (8-0) at LSU (2-5), (n)  
NW Louisiana (5-3) at Louisiana Tech (1-7), (n)  
North Carolina St. (5-2) at Maryland (4-4)  
Southwestern Texas St. (4-4) at McNeese St. (6-2), (n)  
Memphis (5-3) at Mississippi (3-5)  
Arkansas (3-5) at Mississippi St. (6-2)  
Murray St. (4-4) at Morehead St. (0-8)  
Samford (2-5-1) at Morgan St. (2-6)  
Clemson (3-5) at North Carolina (6-2)  
New Hampshire (7-1) at Richmond (3-6)  
Howard U. (4-4) at South Carolina St. (7-2)  
Florida A&M (4-4) at Southern U. (4-4), (n)  
UNLV (5-3) at SW Louisiana (4-4), (n)  
Charleston Southern (0-8) at Tennessee-Martin (3-5)  
Tennessee St. (4-4) at Tennessee Tech (4-5)  
Navy (1-7) at Tulane (1-7), (n)  
James Madison (7-1) at VMI (0-8)  
Indiana St. (4-5) at Western Kentucky (5-4)  
Maine (3-6) at William & Mary (6-3)

**MIDWEST**  
Toledo (5-2-1) at Central Michigan (7-2)  
Troy St. (7-1) at Cincinnati (0-7-1)  
Wisconsin-Oshkosh (2-6) at Drake (5-3)  
Akron (0-8) at Eastern Michigan (2-6)  
Eastern Illinois (3-5) at Illinois St. (5-4)  
Penn St. (7-0) at Indiana (5-3)  
Iowa St. (0-7-1) at Kansas St. (5-2)  
Bowling Green (8-1) at Kent (2-6)  
Ball St. (3-4-1) at Miami, Ohio (3-5-1)  
Illinois (5-3) at Minnesota (3-5)  
Kansas (5-3) at Nebraska (9-0)  
Michigan St. (3-5) at Northwestern (3-4-1)  
Wisconsin (4-3-1) at Ohio St. (6-3)  
Michigan (5-3) at Purdue (4-2-2)  
Southern Illinois (1-7) at Southwestern Missouri St. (2-6)  
Aurora (2-3-2) at Valparaiso (5-3)  
Jacksonville St. (3-4) at Western Illinois (5-3)  
Ohio U. (0-8) at Western Michigan (6-2)

**SOUTHWEST**  
Northern Illinois (3-6) at Arkansas St. (1-7)  
Missouri (3-5) at Oklahoma (4-4)  
Tarleton St. (1-6-1) at Prairie View (0-8)  
Southern Methodist (1-7-1) at Rice (3-4)

Nicholls St. (4-4) at Sam Houston St. (5-4), (n)  
North Texas (6-2) at Stephen F. Austin (4-3-1)  
Texas A&M (7-0-1) at Texas (5-3)

**FAR WEST**  
California (3-5) at Arizona (6-2), (n)  
San Diego (5-3) at Azusa Pacific (2-5), (n)  
Montana (8-0) at Boise St. (7-1)  
NE Louisiana (1-7) at Brigham Young (7-2), (n)  
Oklahoma St. (3-4-1) at Colorado (7-1)  
Wyoming (4-5) at Colorado St. (7-1)  
Nevada (7-1) at Fresno St. (4-5), (n)  
Northern Iowa (6-2) at Idaho (7-1)  
Western New Mexico (4-2) at Montana St. (2-7)  
Cal Poly-SLO (5-3) at Northern Arizona (5-4), (n)  
Utah (8-0) at New Mexico (3-6)  
Arizona St. (3-5) at Oregon (3-6)  
Pacific (5-3) at Oregon St. (2-6)  
Sacramento St. (4-3) at St. Mary's, Cal. (6-3)  
New Mexico St. (2-6) at San Jose St. (1-7), (n)  
CS Northridge (3-4) at Southern Utah (3-5)  
Washington (6-2) at Stanford (2-5-1)  
Eastern Washington (3-5) at Utah St. (2-6)  
Southern Cal (5-2) at Washington St. (6-2)  
Idaho St. (4-4) at Weber St. (4-5)

## NFL Week 10

**SUNDAY**  
Chicago (4-4) at Tampa Bay (2-6), 1 p.m.  
Detroit (4-4) at Green Bay (4-4), 1 p.m.  
Indianapolis (4-5) at Miami (6-2), 1 p.m.  
New Orleans (5-3) at Minnesota (6-2), 1 p.m.  
Pittsburgh (6-2) at Houston (1-7), 1 p.m.  
San Diego (7-1) at Atlanta (4-4), 1 p.m.  
San Francisco (6-2) at Washington (2-7), 1 p.m.  
New England (3-5) at Cleveland (6-2), 4 p.m.  
Arizona (3-5) at Philadelphia (6-2), 4 p.m.  
Buffalo (5-3) at N.Y. Jets (4-4), 4 p.m.  
Cincinnati (0-8) at Seattle (3-5), 4 p.m.  
Denver (3-5) at L.A. Rams (3-5), 4 p.m.  
L.A. Raiders (4-4) at Kansas City (5-3), 8 p.m.

**MONDAY**  
N.Y. Giants (3-5) at Dallas (7-1)