

THE MORNING POST

RALPHIGH, N. C.

PUBLISHED DAILY BY THE NORTH CAROLINA PUBLISHING CO.

ROBERT M. FURMAN - Editor

SUBSCRIPTION PRICE: One Year \$5.00, Six Months 2.50, Three Months 1.25, One Month .50

Office in the Pullen Building, Fayetteville Street.

The Post will publish brief letters on subjects of general interest. The writer's name must accompany the letter.

Brief letters of local news from any section of the State will be thankfully received.

Merely personal controversies will not be tolerated.

Address all business letters and communications for publication to THE MORNING POST.

The telegraphic news service of THE MORNING POST is absolutely full and complete, and is unequalled by any morning newspaper south of New York.

THE LAFFAN NEWS BUREAU of the New York Sun, and is the same service that is used by The Sun itself, which is known to be superior to any service in any newspaper in the United States.

WASHINGTON BUREAU: Kimball Building, 1417 G. St. N. W. EASTERN OFFICE: WESTERN OFFICE: 140 Nassau St., New York.

Subscribers to THE POST are requested to note the date on the label of their paper and send in their renewal before the expiration.



THE WEATHER TODAY: Clearing.

TUESDAY, MARCH 31, 1903.

MAYOR POWELL NOMINATED

After a long contention over the delegates and substitutes, the convention last night nominated for re-election Mayor A. M. Powell.

Mr. Powell will begin his third term in May. His services in the past may be taken as an earnest of the future.

THE INLAND CANAL

From a military as well as a commercial point of view the construction of the Panama canal, or a canal across that isthmus, was and is deemed a necessity for the future welfare of our people and country.

As a hand-maiden, we may say, of this isthmian canal, an auxiliary of that great work and of equal military as well as commercial necessity, is the proposed inland canal connecting Chesapeake Bay by way of Albemarle and Pamlico Sounds with Beaufort Harbor in this State.

But under present conditions the commercial necessities of such a passage-way avoiding the reefs and storms of Hatteras are naturally uppermost for consideration.

The party was at Charleston on Friday, and that evening addressed the Chamber of Commerce. The News and Courier of that city reports the meeting as follows.

The Hon. John H. Small, Congressman from the 1st district of North Carolina, and Mr. Clarence H. Forest, secretary of the Merchants' and Manufacturers' Association of Baltimore, addressed the business men of Charleston at the Chamber of Commerce yesterday on the pressing need of an inland waterway between Norfolk, Va., and Beaufort, N. C.

tricks—to call them mildly, upon Democrats. Every Democrat must have a fair show, and every honorable obligation must be observed by all chosen to represent the party in any position as delegate no less than in office.

The Winston Sentinel remarks upon a recent occurrence: "Wisconsin has passed an anti-cigarette law. Wisconsin grows tobacco extensively, but it is cigar leaf. That partially accounts for it."

The speaker then explained how Charleston would be benefited by the construction of this waterway. He had not come here to elaborate on an academic proposition.

Barge transportation, said the speaker, would greatly reduce freight rates. He figured that there would be a reduction in the tariff rates of about 33 1-3 per cent.

Mr. Small had facts and figures at hand to support his contention, and his argument was convincing and commanded the closest attention.

A PARTY DUTY

Without questioning the intentions of the parties to the delegate-substituting business as developed in connection with the mayoraltyship, we must submit that it affords urgent reasons whereby a definite plan of action shall be prescribed for the future to the effect at least of avoiding all semblance of a trade, a trick or a secret combination.

Tutt's Pills

This popular remedy never fails to effectually cure Dyspepsia, Constipation, Sick Headache, Biliousness, And ALL DISEASES arising from a Torpid Liver and Bad Digestion.

The discovery that tobacco put up in the cigarette form was unhealthy and immoral was made when the use in this shape developed so rapidly correspondingly curtailing the use of cigars, and largely though to a less extent the pipe.

This article of inter-State and international commerce is more largely a North Carolina product than it is of any other State. And bright leaf is peculiarly excellent for the cigarette and the pipe and three-fourths of the crops grown by our farmers that command the highest market price let it be high or low in general, is of the class thus consumed.

As in the case of the cigar-leaf growers of Wisconsin so it is and has been the case with other growers and manufacturers in carrying on the contest on pretense of "moral and physical" injury.

The way candidates manage their campaigns in Chicago strikes us as containing more elements of popularity if not success than some other ways, appointing proxies or substitutes for delegates already chosen for instance.

Mr. Roosevelt has adopted the plan of Royalty and determined to swing through the West strictly incog, which means without forming unpleasant acquaintances while on foot.

A Royal Privilege

Chicago Record-Herald. It's great to be a king, after all. The boy king of Spain, it appears, can marry a grown up woman if he wants to.

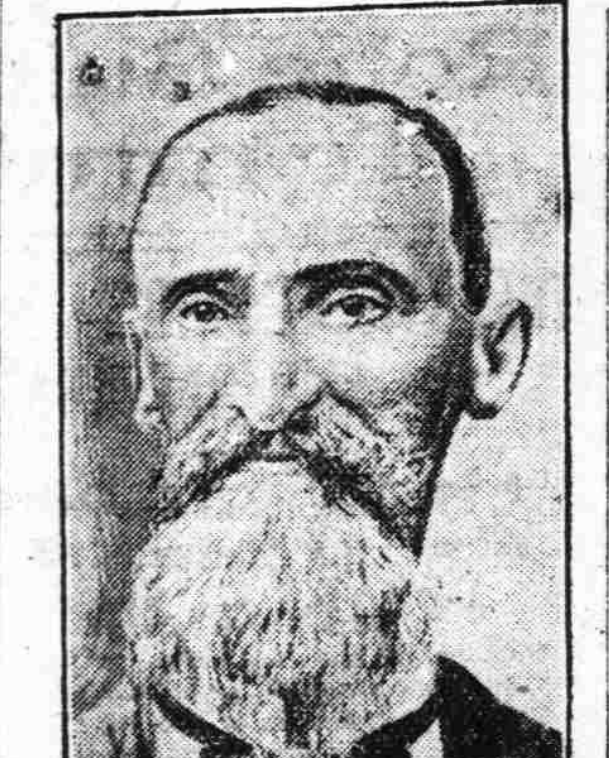
Had All-Gone Feelings, Impure Blood, and Was Daily Losing Flesh.

Paine's Celery Compound

The Spring Fertilizer and Cleanser Prolongs Life

Paine's Celery Compound is today the most reliable and most successful spring medicine in the world. The present enormous demand is the best proof of its popularity.

Paine's Celery Compound has been marvelously successful for the simple reason that in every instance it accomplishes more than is claimed for it.



W. H. LADD, of Allinson, Tenn.

is the one spring remedy that physicians and the best people endorse. Men and women of wealth and high social position, able to command the services of the most eminent medical men, use Paine's Celery Compound in spring time, having full confidence in its virtues.

"For several weeks before I commenced using Paine's Celery Compound I had a tired and all-gone feeling, my blood became impure, and I was daily losing flesh.

Choke the Splitters!

Providence Telegram. Expectation with its accompaniment of disease germs, is a menace to health and no person has a right, to spread contagion.

Both Ends Upright

(Durham Herald.) No fault has been found with the tail-end of the Raleigh Post's presidential ticket, but it is a fact that one end stands as much chance of landing as the other.

Senate's Wise Man had Three Years of School

(Pittsburg Dispatch.) The most learned man in the United States Senate spent only three years in school, and those in his early childhood. From 6 to 9 years of age embraced the entire academic training of John T. Morgan of Alabama.

The Pleasure is Ours

Durham Sun. The Raleigh Post of this morning contains as its leading editorial, a very gratifying article upon "Durham's Growth and the Cause of It."

Girls' Ways

London Lady's Pictorial. There is greater freedom now between young folks than in the days gone by, and more "chumminess," girls write as a matter of course to many "nice boys" they know, and the "nice boys" in turn bring them chocolates and flowers and take them out to tea with never an arriere-pensee.

Too Effeminate

Boston Herald. The strenuousness of President Roosevelt is further exemplified by the fact that he never carries an umbrella, though this is not saying that he doesn't know enough to go in when it rains if he feels like it.

J. R. Ferrall & Co.

222 Fayetteville Street. JUST RECEIVED Georgia Cane Syrups, Old Fashion Mountain Buckwheat, Prepared Buckwheat, Pancake Flour, New Cured Va. Hams, few Old Va. Hams. ALL PHONES 88.

Any Trip is a Pleasure Trip TO THOSE WHO TRAVEL VIA THE SOUTHERN RAILWAY

The Florida service of the Southern Railway this season is palatial. The South's Greatest Railway System. Magnificent Vestibuled Trains between the North, West and South. Convenient Schedules. Luxurious Pullman Accommodations. Unexcelled Dining Car Service. W. A. TURK, S. H. HARDWICK, Passenger Traffic Manager, General Passenger Agent. General Offices, Washington, D. C. R. L. VERNON, T. P. A., T. E. GREEN, Charlotte, N. C. City Ticket Agent, Raleigh, N. C.

GO-CARTS

Baby's confinement to nursery is now over and SPRING invites her to a ride outdoors. We have a beautiful line of GO-CARTS for your inspection.



\$7.50 TO \$25.00 Write FOR Catalogue.

N. B.—Our Spring Stock of Furniture and Housefurnishing is complete. Royall & Borden Furniture Co. COR WILMINGTON AND HARGETT STS. RALEIGH