

Practical Pedestrian Suits and Hats

In Natty Design



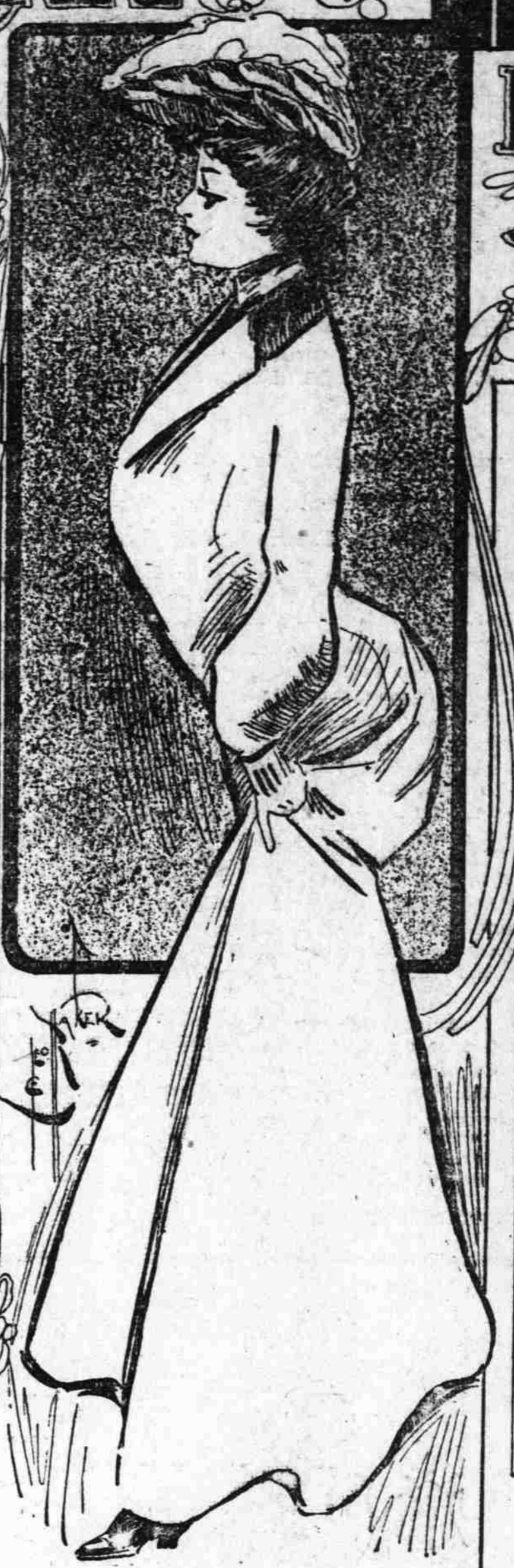
SNUGLY FITTING WALKING SUIT



THE SEVERELY TAILORED WALKING SUIT



BACK VIEW OF A SUCCESSFUL MODEL



CADET BLUE WITH SCARLET AND GOLD

Novelty and Pastel Shades in Light Weight Effects

Most interesting is the study of dress from the observer's point of view; to note how the first fashions of every season are always fanciful and elaborate; to watch these same fashions being modified as time goes on and individual taste is allowed to assert itself, and then to observe how after all the styles for the season have apparently been definitely decided upon, there will come into view some new and absolutely different design in hat, coat or costume which will at once receive sanction of popular approval.

We know already how greatly favored the pedestrian or so-called walking suit is, and how absolutely essential to woman's health and comfort this practical costume is. For walking or shopping, when our mental as well as physical strength is under a certain amount of strain, is there anything that is actually more comforting than the fact that we are enjoying the freedom of motion afforded by a "trotter" skirt?

A few years ago woman paid little attention to the details of what we at that time called the rainy-day skirt, and which was worn only in stormy weather. Very frequently an old skirt was cut off at the line of the ankle and finished to answer the immediate purpose. No wonder that in those days the woman clothed in a short skirt felt apologetic, as well as ill-dressed, if she were seen in it after the sun had emerged from the clouds.

Today its legitimate and far more presentable successor, the pedestrian suit, calls for as much care and thought in its development as does any other costume. It is the correct garment on all occasions, though the sky be never so blue, and the woman wearing it, in the city or in the country, will present a smart as well as sensible appearance.

It is not generally known that the very first walking suit originated here. It was made for a charming American actress, who found it so convenient that she took it abroad with her and wore it in the streets of Paris itself. The French dressmakers, appreciating its good points, immediately copied it. And now the walking suit has returned to us, assured of widespread popularity since it came via Paris and stamped with the magic seal of French approval.

This morning gown for shopping and for street wear should be quiet and subdued. At the same time it must impart to its wearers an air of distinction.

Possibly the passing of the long coat may be traced to a similar desire for comfort, wholly incompatible with the length and weight of this garment. However this may be, or whatever the real reason for it, it is certain that the long coat and all extremely blouse effects will presently disappear before the 1890 Eton coat, with its full sleeve and back made in one piece, and the close, short coat that reaches just to the waistline in back and a little below in the front.

Another feature that is wholly new this season is the girdle that accompanies this particular coat. This one design is about five to seven inches deep, absolutely round across the back, and carefully fitted in to the figure. It is cut on the straight of the material and shaped with three or four seams. Usually one at the back and one at each side are all that are needed. Frequently this belt or girdle is made absolutely plain, but more often it is laid in soft folds before being shaped to the figure.

Since the prevalent idea in dress just now is to have everything loose and comfortable without concealing the lines of the figure, this stiff high belt is largely depended upon to outline the contour and to give the latest seal of fashion to the frock. The high belts are certainly very smart, but it requires the nicest attention to detail to fashion them properly.

Of course there are a variety of designs in the finish of the new coats this spring, which require that much attention be paid to the waist and belt of the gown worn underneath. The wide centre is a marked feature of the new spring fashions, but let it not be suggested for a moment that "any old belt" will give the desired effect. On the contrary, the smart girdle is fitted and even boned as carefully as a waist is.

In spite of the fact that many of the walking costumes are exceedingly plain, almost severe in effect, there are many of our fair sex who prefer to appear most stunning in their street costume. To acquire this end, the gown naturally is made a little more elaborate and the skirt, instead of being the usual walking length is made a little dressier by just escaping the ground.

In spite of the fact that purple was the fashionable color last spring and that there have been no end of purple costumes seen this winter, the smartest of all the new gowns now being made up for spring wear are those of mauve, violet, lilac and all the shades of heliotrope and purple. As is the general rule, when the dark shades of any color have been worn during the winter, the very lightest shades of the same color make their appearance in the spring walking gowns. The dark purple rough cloths and camel's hair of the winter have given place to the exquisite shades, very light ones, of mauve, and heliotrope in smooth cloths, not unlike last year, with the fleck of white, and on the zibeline order, but in the lightest weight broadcloth. Then, too, the biscuits and grays will be predominant colors, and the gray will be of the light silvery shade.

The bolero—and the Eton too, for that matter—have certainly an undisturbed lease of life, and both will hold glorious sway. The air is full of predictions as to the coming modes. The blouse, say some, will hark back to the days before it assumed a pouch and when it was known as a "shirt-waist." In fact some of the new models are drawn down perfectly straight in the

front without a suggestion of bagginess. But from the outlook now it is probable that a middle course will be adopted as the spring waxes and that while the blouse will have less bag than heretofore it will still have a little.

One very attractive, severely tailored walking suit, noticed in the shopping district, was of bouretted voile, the Eton coat of which had a dip in front while it defined the waistline at the back and sides. There was a narrow vest and shoulder straps of braided white. The skirt was gored, plain and flared at the bottom, finished with a stitched hem.

Another decidedly neat looking suit, was of light gray tweed with an invisible hairline of blue. The jacket fitted snugly to the figure and the plastron dipped below the waistline and was ornamented with gold buttons. Narrow fancy braids of blue and gold were used as strapping on both coat and skirt, and also edged the nun's folds which made the trimming. The skirt had hip yoke and fan front and the folds trimmed the circular flounces which made the smart flare at the foot.

Still another decidedly chic frock, with detailed suggestions of military glory was of cadet blue cloth, with many gold buttons and scarlet and gold embroideries. The short Eton had a double epaulette over each shoulder trimmed with gold buttons, and the narrow vest was embroidered in scarlet and gold. The skirt was in pleated gores, and the straps, fastened with small gold buttons gave a very smart effect.

Made of the lightest weight black broadcloth was another more elaborate style of street gown, with longer skirt trimmed with bands of black silk braid, which outlined an irregular shaped yoke, pointed at the front of the skirt. From this yoke there were small pleats which opened at the knee and effected the required flare at the bottom. The short jacket was trimmed to correspond with the skirt, and made with short square or rounded fronts slashed up to allow the dressy white waist to peep through. A beautiful shade of red introduced in a tiny vest and edging the jacket, with a mere suggestion on the sleeves, which were finished by the soft lingerie ruffles, gave a distinctly charming effect tout ensemble.

Just a word, in conclusion, as to the absolute necessity of a pedestrian costume. The decided tendency toward the development of the walking suit in its more dressy aspect, both as regards trimmings and materials, further accents the development of good taste in the modern woman, whether she be of American or French origin.

Apropos of street or walking costumes we intuitively select something in the line of hats that is stunning and attractive at the same time neat and simple. With Easter coming in the first week of April, the millinery market bids fair to be a lively one indeed, and everyone is on the qui vive for new ideas.

The darker colored ready-to-wear hats show strongly, a tendency toward the Parisian fashion of gold trimmings for hats. Straw braids show the introduction of glittering gold thread, and are already being displayed in many of the leading shops.

There is no doubt that the tricorne is the shape par excellence for gold trimmings. This is the shape which is being worn so much in Paris at present with the smart and dressy walk-

ing costumes. It means that the wearer must have fluffy, well-dressed hair to carry it off properly and make it becoming to any but the youngest faces.

Then equally as chic is the new Torpedo turban. One design markedly attractive was made of straw braids fashioned into foliage shapes to form the brim, which rolls gracefully at the sides. The crown is filled in with white roses and foliage in natural tints. The shape projects over the face, is rather narrow through the sides, and sets closely to the shape of the head in the back.

Golden brown will to some degree take the place of black as the fashionable color, a touch of which is essential for contrast. This will be chiefly employed in the velvet ribbon. With the popularity of leather as a trimming we see some of the naggiest creations that are simply alluring. A rough brown Marselles straw has a large crown with rolling brim, this caught sharply at the left side, the shiny black leather belt which is crushed around the crown passing over the brim and buckling at the left side. The shape is novel and quite different from its predecessors.

For useful, every day wear the plainer hat the smarter it is. The small natty shape, sparingly trimmed, and above all, becoming to the wearer, is always decidedly attractive and correct.

New Torpedo Turban.
Straw braids are fashioned into foliage shapes to furnish the brim of this torpedo turban, the crown of which is filled in with white roses and foliage in the natural tints. The shape projects markedly over the face, is rather narrow through the sides and sets closely to the shape of the head in the back.

"Ezell" Hat Trimmed With a Leather Belt.
A rough brown Marselles straw has a large crown with rolling brim, this caught up sharply at the left side, the shiny black leather belt which is crushed around the crown passing over the brim and buckling at the left side. The shape is novel and very different from its predecessors.

The Severely Tailored Walking Suit.
A bouretted voile is used for this plain tailor-made walking suit, the Eton coat of which has a dip in front while defining the waistline at the back and sides. There is a narrow vest of braided white, this also serving as shoulder strap. The skirt is gored, plain and finished with a velvet binding and stitched hem.

Back View of a Successful Model.
The very short Eton of this snuff colored etamine has velvet collar and buttons of brown, while the underblouse is of messaline silk the same tint. The shoulder is elongated into a sleeve cap where the full puff sleeve is inserted; and the blouse is finished with a crush girdle which shows beneath the coat. The skirt has slot seams with inserted

pleats below the knee, these heavily pressed their entire length.—From Wolerstein Goldsmith.

Snugly Fitting Walking Suit
Light gray tweed with an invisible hairline of blue fashions this trim walking suit. The jacket fits closely to the figure and the plastron dips below the waistline and is decorated with gold buttons. Narrow fancy braids of blue and gold are used as strapping on both coat and skirt, and also edge the nun's folds which compose the trimming schemes. The skirt has hip yoke and fan front and the nun's folds trim the circular ruffle which makes the smart flare at the foot.

Cadet Blue With Scarlet and Gold.
There is a hint of military glory in this cadet blue cloth costume with its many gold buttons and scarlet and gold embroideries. The short Eton has a double epaulette over each shoulder trimmed with gold buttons, and the narrow vest is embroidered in scarlet and gold. The skirt is in pleated gores, and the straps are fastened down with small gold buttons with very smart effect.



"See here, waiter, I have been waiting here for an hour."
"Yes-sah! I've been waiting here for a month, sah! Very tiresome, sah!"



EZZEL HAT TRIMMED WITH A LEATHER BELT