

A Centre of Learning.

Numerous Colleges and Schools Educate Thousands in the Arts and Sciences.

THE PUBLIC SCHOOLS.

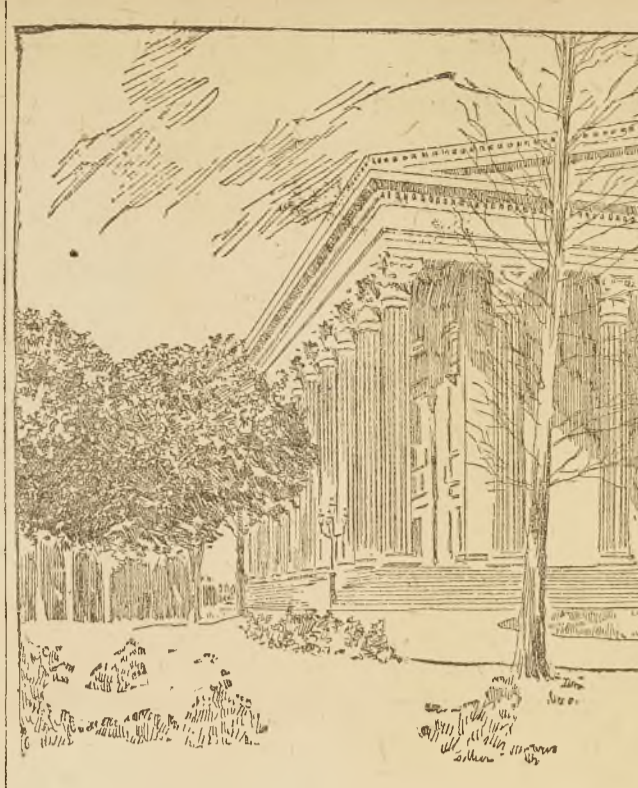
There is but one city in the United States that equals and none that surpasses Philadelphia as an educational center. From its earliest history it has been prominent in educational work and today is the seat of many prominent institutions.

museum of archaeology and paleontology. Twelfth, the University Hospital, thirteenth, the Wharton Institute of Anatomy and Biology.

Full information about the details of instruction may be obtained from the annual catalogue, and in the special circulars issued from time to time. But apart from current information, there are some of these departments worth noting.

The college department occupies College Hall, the Mechanical Buildings at Third and Arch streets, the Medical Hall, at Thirty-seventh and Pine. It includes the courses in Arts and Sciences, and the special schools mentioned above. Under the head of the 'Downe' department are the following courses: Mechanical, electrical, civil and mining, and the courses in architecture and chemistry.

The biological school is one of the many unique features of the University, and one of the most interesting. No other part of the college department has a greater proportion of students thoroughly interested and working hard. The school is superbly equipped, and is one of the things people from other colleges talk about.



GIRARD COLLEGE

of the water which is reputed to have health-restoring qualities. But, as every one is not situated so that he or she can go to the springs at pleasure, the bottling and sale in the cities of mineral waters has come to be quite an important business.

of the water which is reputed to have health-restoring qualities. But, as every one is not situated so that he or she can go to the springs at pleasure, the bottling and sale in the cities of mineral waters has come to be quite an important business.

The Refining of Sugar.

One of Philadelphia's Great Industries in Which Millions Are Invested.

FRANKLIN INSTITUTE.

The manufacture of sugar from the sugar cane and other sources is now one of the largest branches of human industry, but this great development is of comparatively recent date, and although there are evidences of its high antiquity in Africa and China, it appears only to have been vaguely known to the Greeks and Romans of olden times.

publications of the principal scientific and technical societies of the world, lists of about 400 home and foreign scientific societies, and lists of about 1000 members in good standing, and complete sets of the British (and colonial), French, German, Austro-Hungarian, Russian, Swiss and American Patent Records, are introduced to Europe.

Philadelphia Clubs.

Because Philadelphia is a city of homes with home comforts far in advance of those of other cities, it is not a community famous for the number of its clubs. Nevertheless there are a number of clubs of prominence, offering to the properly accredited stranger a warmth of hospitality not exceeded by similar institutions in any community in the land.

WOMEN'S CHRISTIAN ASSOCIATION BUILDING.

ing districts. The antiquated method of doing up upon long credit, at large profits, which so long prevailed, has been superseded to a great extent by quick sales, and close collections.

Leather Goods.

There is not a separate and distinct factory for the manufacture of leather goods in Philadelphia. This includes the coarse and hard leather that is placed as a 'top' upon the rough boot or shoe. Leather belting, or machinery (and cotton belting, too) by the way, leather for whips, leather for base balls, leather for carriage tops, leather for rough shoes and fine kid shoes, and leather for the morocco bindings of the daintiest books printed. Every branch of the trade is represented, and represented well.

Leather Belling.

The making of leather belting is a distinct industry, but one which might very consistently be included in a general article on the leather industry. The oak leather belting turned out by Philadelphia manufacturers is not surpassed anywhere. It is used in all the big mills, factories and shops of this city, and of recent years has taken the place of home manufactured belting in Baltimore, Pittsburg, Cincinnati and other cities.

Pattern Making.

The rapid and material progress that has been made by inventive genius throughout the United States during the past half a century has never had its counterpart elsewhere, and has stimulated various industries to a most marvelous extent, especially in the line of producing machinery and every description.

WOMEN OF PENNSYLVANIA.

but to open up the way to civilization to other women. Philadelphia physicians are prominent, so are Philadelphia dentists. There are three dental colleges in the city, each connected with one of the medical colleges, viz., the Department of Pharmacy and the Pennsylvania College of Dental Surgery with Jefferson University, and the Philadelphia College of Dental Surgery with the University of Pennsylvania. This gives opportunity to their students for excellent instruction in anatomy, physiology and chemistry, both didactic and practical.

Fishing Tackle.

Philadelphia being located on the water and near to a number of streams where fishing is extensively engaged in, the twine, netting and fishing tackle business is one of the largest in the country. The people who make a living by catching fish and other members of the finny tribe, as well as those who do it for pleasure and sport, must be equipped with certain kinds of tackle.

The Franklin Institute.

The Franklin Institute of the State of Pennsylvania, located in Philadelphia, was founded in the year 1824, specifically for the promotion of the mechanic arts. The scope of its operations, however, has been greatly extended within recent years, and it may more properly be termed an association for the promotion of the arts and manufactures.

Leather Goods.

There are several thoroughly reliable houses in the city whose business is the dyeing and finishing of fabrics, which is an art separate and distinct by itself, contrary to the beliefs of most people.

Leather Belling.

The making of leather belting is a distinct industry, but one which might very consistently be included in a general article on the leather industry.



UNIVERSITY OF PENNSYLVANIA.

lege or should ever be admitted within its walls, even as a visitor. The college buildings are magnificent specimens of architecture. The main building is of marble, in the form of a Greek temple in Corinthian style, and is surrounded by colonnades, which comprise thirty-six massive marble columns, 16 feet in diameter and 26 feet high. The structure has a length of 218 feet and a width of 140 feet and a height of 30 feet. It has three stories, each divided into four rooms with vestibules, and is surmounted by a roof of massive marble. The remains of the founder rest in the lower vestibule, beneath a marble statue. Four other buildings, also of marble and each 62 feet wide by 125 feet long, were built of the same stone and others have since been added, until the college has an accommodation for more than 1300 boys.

Mineral Waters.

Within a few hundred miles of Philadelphia are to be found any number of mineral springs, and many of these are visited Summer and Winter by persons in search of health. They come from all parts of the land, and live in the hotels which are near the springs, and partake

Mineral Waters.

Within a few hundred miles of Philadelphia are to be found any number of mineral springs, and many of these are visited Summer and Winter by persons in search of health. They come from all parts of the land, and live in the hotels which are near the springs, and partake

Mineral Waters.

Within a few hundred miles of Philadelphia are to be found any number of mineral springs, and many of these are visited Summer and Winter by persons in search of health. They come from all parts of the land, and live in the hotels which are near the springs, and partake

Mineral Waters.

Within a few hundred miles of Philadelphia are to be found any number of mineral springs, and many of these are visited Summer and Winter by persons in search of health. They come from all parts of the land, and live in the hotels which are near the springs, and partake

Mineral Waters.

Within a few hundred miles of Philadelphia are to be found any number of mineral springs, and many of these are visited Summer and Winter by persons in search of health. They come from all parts of the land, and live in the hotels which are near the springs, and partake

Mineral Waters.

Within a few hundred miles of Philadelphia are to be found any number of mineral springs, and many of these are visited Summer and Winter by persons in search of health. They come from all parts of the land, and live in the hotels which are near the springs, and partake

Mineral Waters.

Within a few hundred miles of Philadelphia are to be found any number of mineral springs, and many of these are visited Summer and Winter by persons in search of health. They come from all parts of the land, and live in the hotels which are near the springs, and partake

Mineral Waters.

Within a few hundred miles of Philadelphia are to be found any number of mineral springs, and many of these are visited Summer and Winter by persons in search of health. They come from all parts of the land, and live in the hotels which are near the springs, and partake

Mineral Waters.

Within a few hundred miles of Philadelphia are to be found any number of mineral springs, and many of these are visited Summer and Winter by persons in search of health. They come from all parts of the land, and live in the hotels which are near the springs, and partake

Mineral Waters.

Within a few hundred miles of Philadelphia are to be found any number of mineral springs, and many of these are visited Summer and Winter by persons in search of health. They come from all parts of the land, and live in the hotels which are near the springs, and partake

Mineral Waters.

Within a few hundred miles of Philadelphia are to be found any number of mineral springs, and many of these are visited Summer and Winter by persons in search of health. They come from all parts of the land, and live in the hotels which are near the springs, and partake

The Leather Industry.

The Manufacture of Shoes and Glazed Kid Leather Extensively Carried On.

MANY OTHER LINES.

Of the many necessities incidental to modern living, no one thing seems to be more conducive to our physical comfort than the article of footwear, and as it is no longer the fashion to go barefooted, it follows that with the increasing and growing population, the consumption of shoe leather must be very large indeed.

Leather Belling.

The making of leather belting is a distinct industry, but one which might very consistently be included in a general article on the leather industry. The oak leather belting turned out by Philadelphia manufacturers is not surpassed anywhere.

Pattern Making.

The rapid and material progress that has been made by inventive genius throughout the United States during the past half a century has never had its counterpart elsewhere, and has stimulated various industries to a most marvelous extent, especially in the line of producing machinery and every description.

Leather Goods.

There is not a separate and distinct factory for the manufacture of leather goods in Philadelphia. This includes the coarse and hard leather that is placed as a 'top' upon the rough boot or shoe.

Leather Belling.

The making of leather belting is a distinct industry, but one which might very consistently be included in a general article on the leather industry. The oak leather belting turned out by Philadelphia manufacturers is not surpassed anywhere.

Pattern Making.

The rapid and material progress that has been made by inventive genius throughout the United States during the past half a century has never had its counterpart elsewhere, and has stimulated various industries to a most marvelous extent, especially in the line of producing machinery and every description.

Leather Goods.

There is not a separate and distinct factory for the manufacture of leather goods in Philadelphia. This includes the coarse and hard leather that is placed as a 'top' upon the rough boot or shoe.

Leather Belling.

The making of leather belting is a distinct industry, but one which might very consistently be included in a general article on the leather industry. The oak leather belting turned out by Philadelphia manufacturers is not surpassed anywhere.

It has grown to large proportions because it comes from mountainous regions, and is produced on a very extensive basis. There are about a dozen tanneries in the city, and an enormous lot of hides are tanned every year. While many hides are received from nearby points, a great quantity comes from South America, Rio de Janeiro, and other prominent places far-away places. The bark used in tanning is shipped here from the mountains, much of it coming from mountainous regions in the State, and of a quality especially useful for the purposes for which it is intended. The product of the tanneries is then sent to the wholesale leather houses. The leather is made into harness, belts, boots, shoes and many other things, and is sold at the present age. So it is that the raw cowhide, just taken from the beast's back, is made into a variety of articles through various processes, finally ready to stand the strain of usage upon a horse's back, helping to stretch the machinery in important manufacturing enterprises, protecting the feet and doing many other things. It is thus seen at a glance that the tanning business is one of the most important and prominent parts in the industrial life.

The Tanning Industry.

The tanning industry is very important to Philadelphia, and is carried on to a very extensive basis. There are about a dozen tanneries in the city, and an enormous lot of hides are tanned every year. While many hides are received from nearby points, a great quantity comes from South America, Rio de Janeiro, and other prominent places far-away places. The bark used in tanning is shipped here from the mountains, much of it coming from mountainous regions in the State, and of a quality especially useful for the purposes for which it is intended. The product of the tanneries is then sent to the wholesale leather houses. The leather is made into harness, belts, boots, shoes and many other things, and is sold at the present age. So it is that the raw cowhide, just taken from the beast's back, is made into a variety of articles through various processes, finally ready to stand the strain of usage upon a horse's back, helping to stretch the machinery in important manufacturing enterprises, protecting the feet and doing many other things. It is thus seen at a glance that the tanning business is one of the most important and prominent parts in the industrial life.

Leather Belling.

The making of leather belting is a distinct industry, but one which might very consistently be included in a general article on the leather industry. The oak leather belting turned out by Philadelphia manufacturers is not surpassed anywhere. It is used in all the big mills, factories and shops of this city, and of recent years has taken the place of home manufactured belting in Baltimore, Pittsburg, Cincinnati and other cities.

Pattern Making.

The rapid and material progress that has been made by inventive genius throughout the United States during the past half a century has never had its counterpart elsewhere, and has stimulated various industries to a most marvelous extent, especially in the line of producing machinery and every description.

Leather Goods.

There is not a separate and distinct factory for the manufacture of leather goods in Philadelphia. This includes the coarse and hard leather that is placed as a 'top' upon the rough boot or shoe.

Leather Belling.

The making of leather belting is a distinct industry, but one which might very consistently be included in a general article on the leather industry. The oak leather belting turned out by Philadelphia manufacturers is not surpassed anywhere.

Pattern Making.

The rapid and material progress that has been made by inventive genius throughout the United States during the past half a century has never had its counterpart elsewhere, and has stimulated various industries to a most marvelous extent, especially in the line of producing machinery and every description.

Leather Goods.

There is not a separate and distinct factory for the manufacture of leather goods in Philadelphia. This includes the coarse and hard leather that is placed as a 'top' upon the rough boot or shoe.

Leather Belling.

The making of leather belting is a distinct industry, but one which might very consistently be included in a general article on the leather industry. The oak leather belting turned out by Philadelphia manufacturers is not surpassed anywhere.

NEW HIGH SCHOOL.

NEW HIGH SCHOOL.