

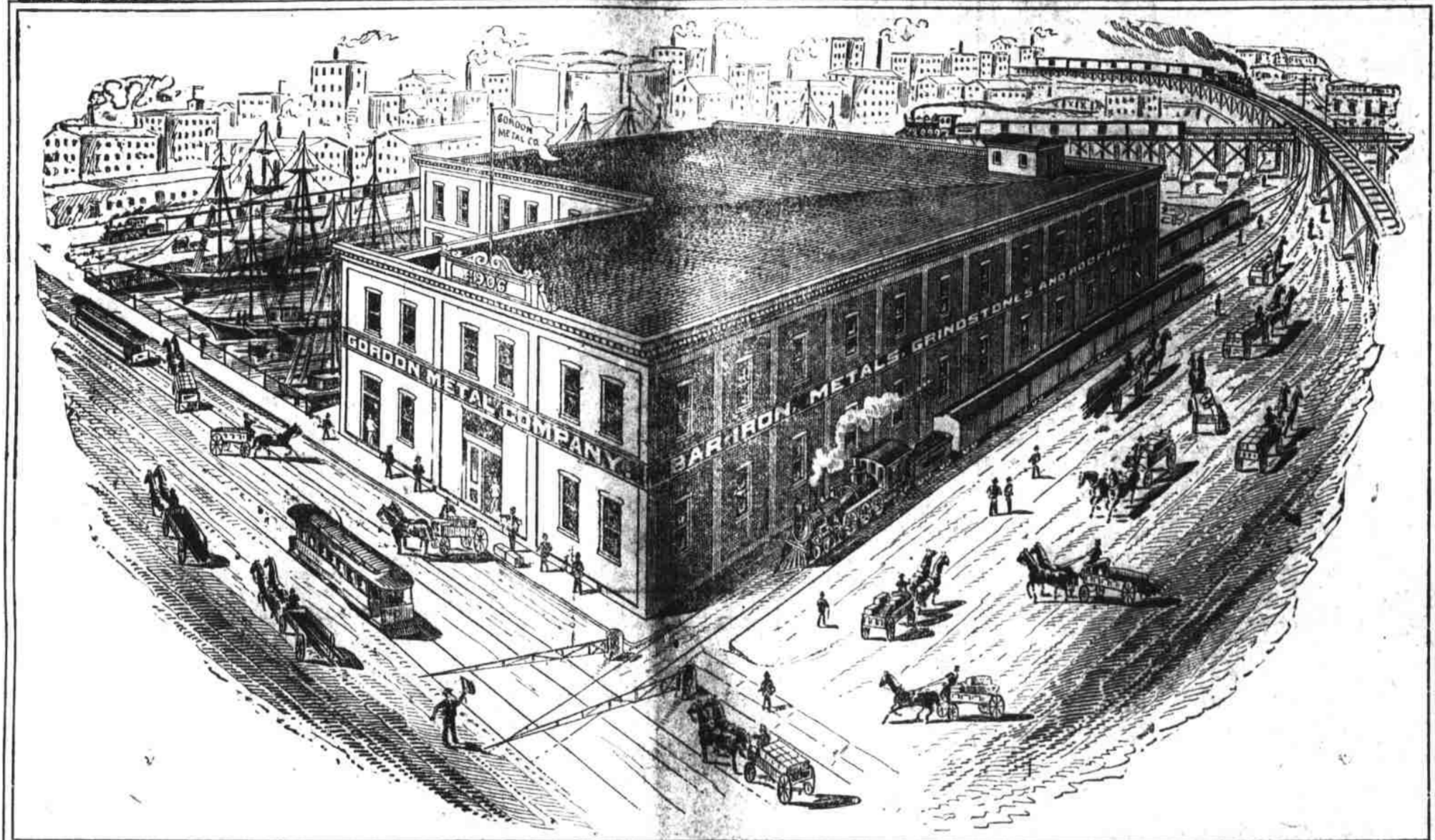
When You Go to the Exposition be Sure to Visit Richmond and Call on

# The Gordon Metal Co.

Jobbers, Manufacturers' Agents, and Dealers in

## Metals, Iron, Steel, Roofings, Etc.

RICHMOND, - - - - VIRGINIA



**The Gordon Metal Co.'s New Building—Reinforced Concrete Construction.**  
Capacity—First Floor, 21,000,000 pounds; Second Floor, 4,500,000 pounds, which is equivalent to 850 carloads.

We present a cut showing the building of the Gordon Metal Company, on the south side of Dock Street, at Fourteenth Street. This building fronts 80 feet on Fourteenth Street and runs back 150 feet on the Dock, with an "L" 51 feet by 84 feet, is two stories high, and has a floor area of 30,000 square feet in the two stories. The first story is 18 feet clear pitch to the floor above, and the second is 15 feet average height. The building has been designed especially to meet the needs of the Gordon Metal Company's business, the great pitch of the stories being such that bars of steel can be stood up on end, and the floors, particularly the first-story floor, which has a safe strength of 1,500 pounds per square foot, have been constructed so as to carry the enormous weights which the conduct of this business makes necessary. The offices of the Company are in a gallery convenient to the

front, the Fourteenth-Street entrance is designed for the accommodation of local trade, and the rear, or eastern end, is arranged for shipping, with large double doors. There is also on the south side of the building a space devoted to railroad track, so that four freight cars can enter the building and unload directly on the floor. The entire building is fire-proof throughout, the floors being constructed of steel rods and concrete, as also are the columns and girders, and the entire weight on the outside of the building is carried on columns just as on the inside, the architect having introduced into this building the recognizedly new feature in this form of building, viz., a curtain wall, six inches thick, which does not carry any weight, it being the same general idea as that used in skeleton steel construction, except in that case the curtain wall is put on the outside of the

columns and girders; but this material, having the advantage of protecting its own steel, does not require a wall on the outside for this purpose, and it will be seen in the picture that the wall sets back from the face of the columns and girders. All windows are of metal and wire glass. There will be absolutely no wood used in the construction. MR. J. T. WILSON is the contractor for this building, and has exhibited business industry worthy of note in undertaking to erect this, the FIRST CONCRETE STEEL BUILDING IN RICHMOND, and he is assisted in his work by a corps of skilled men. MR. WILLIAM C. WEST is architect for the building, and, after large research and a great many estimates, he found this to be the cheapest form of fire-proof construction, it being in some cases as much as 33 per cent

cheaper than some other forms. He has been assisted in the preparation of the drawings for this specialty by MR. S. B. WILLIAMSON, of Baltimore, and in the erection of the building by MR. A. COLE BLANTON, as deputy superintendent. The building is also a monument to the industry and enterprise of the Gordon Metal Company. This form of building has been proven to be fire-proof. The reduced rate of insurance and increase in its value to resist wear and tear, make it the coming construction, and this is the first building in Richmond to be built entirely of this material. The Gordon Metal Company are agents for "Giant" Portland Cement and Twisted Steel Bars, and will be glad to correspond with parties contemplating using these materials in connection with reinforced concrete construction.

### Principal Articles from Stock List of Gordon Metal Company

- |  |   |  |  |  |  |
|--|---|--|--|--|--|
| <ul style="list-style-type: none"> <li>"Giant" Portland Cement.</li> <li>Twisted Steel Bars.</li> <li>Roofing Tin.</li> <li>Virginia New Method.</li> <li>Gordon's Old Style.</li> <li>Nyle Old Style.</li> <li>Roanoke New Method.</li> <li>Pearl L. C.</li> <li>Jessamine L. C.</li> <li>Diana or Defenders</li> <li>Expanded Metal Laths.</li> <li>Charcoal.</li> <li>Ornamental Steel Ceilings.</li> </ul> | <ul style="list-style-type: none"> <li>Tinners' Rosin.</li> <li>Asbestos Material.</li> <li>Metallic Paint.</li> <li>Lead Pipe.</li> <li>Stove Boards.</li> <li>Roofers' and Furnace Cement.</li> <li>Sheet Lead.</li> <li>Sheet Brass.</li> <li>Wire (all kinds).</li> <li>Barbed Wire Roofing Nails.</li> <li>Tinners' Rivets.</li> </ul> | <ul style="list-style-type: none"> <li>Stove Bolts.</li> <li>Tin Shingles.</li> <li>Bright Tin Plates.</li> <li>Refined Bar Iron.</li> <li>Soft Steel Bands.</li> <li>Soft Steel Hoops.</li> <li>Best Bloom Galvanized Sheets.</li> <li>Plate Iron and Steel.</li> <li>Sheet Iron and Steel.</li> <li>Steel Angles.</li> <li>Sweeds or Norway Iron.</li> </ul> | <ul style="list-style-type: none"> <li>Crackle Tool Steel—warranted.</li> <li>Norway Nail Rods.</li> <li>Gantle Spring Steel.</li> <li>Round Edge Tire Steel—Gantler.</li> <li>Smooth Finish Machine Steel—Gantler.</li> <li>Iron Finish Machine Steel.</li> <li>Two Calk Steel—Gantler.</li> <li>Railroad and Boat Spikes.</li> <li>Sheet Copper.</li> <li>Sheet Zinc.</li> </ul> | <ul style="list-style-type: none"> <li>Tar Roofing and Felts.</li> <li>Solders.</li> <li>Tinners' Machines and Tools.</li> <li>Babbitt Metals.</li> <li>Grindstones.</li> <li>Iron and Steel Roofing.</li> <li>Galvanized Conductor Pipe.</li> <li>Galvanized Eave Trough.</li> <li>Conductor and Eave Trough Fittings.</li> <li>Stove Pipe, Stove Pipe Elbows.</li> </ul> | <ul style="list-style-type: none"> <li>Stove Pipe Dampers and Collars.</li> <li>Wood's Patent Planished Sheet Iron.</li> <li>Sundry Metals.</li> <li>Pig Tin—Bar Tin.</li> <li>Pig Lead—Bar Lead.</li> <li>Antimony.</li> <li>Spelter.</li> <li>Ingot Copper.</li> <li>Type Metal.</li> <li>Braziers' Solder.</li> </ul> |
|--|---|--|--|--|--|

We can furnish promptly from Mill any article in our list not mentioned above. Send for our Full List with Prices.

## THE GORDON METAL COMPANY,

FOURTEENTH AND DOCK STREETS  
RICHMOND, - VIRGINIA

JAMES W. GORDON, President.      FRANK W. BROWN, Vice-President and Treasurer.      HOWARD GORDON, Secretary.

