

# The Secret of Perfect Baking

If all the heat in an oven was thrown on one spot like a burning glass — part of your bread or cake would burn up and the rest remain uncooked. No range is so poorly constructed as to do this—but there is a vast difference in the way ranges radiate heat. Some don't throw heat evenly onto the oven, and good baking is impossible. The fault of poor cooking lies oftener in the range than in the cook. The secret of successful baking is to have a range that distributes heat evenly.

Get a "Richmond" Range—made in all sizes and styles to burn wood, hard or soft coal—the range that is so constructed that it throws heat evenly onto the oven.

## The Range That Pays for Itself

A "Richmond" Range will quickly pay for itself. Figure for a minute the enormous amount of fuel wasted in clinging to a range that buckles and wastes heat. Figure, too, the amount of food a poor range ruins. It's a matter of economy to put in a "Richmond" Range—because it saves you money—by stopping the waste of food and fuel. They're so constructed that cracking, buckling and warping is almost impossible.

## Quick Heating

The sheet flue construction used insures a strong drawing range. No long delays waiting for stove to heat up. The fire boxes are so constructed that ashes cannot accumulate. Ash chutes force ashes into the pan. This means more heat at less cost. You can keep an abundance of water hot on a modest amount of fuel.

## Sold on a Guarantee

We have published some intensely interesting booklets on the heating and baking question. These books show "Richmond" Stoves for every purpose—explain the vital points in stove and range construction—and explain our money-back guarantee on which every "Richmond" Range or Stove is sold. Send for your copy now. State whether you are interested in a range, stove or heater.

**Richmond Stove Company**

2506 E. Main St., Richmond, Virginia.

## This Range Will Save You Money

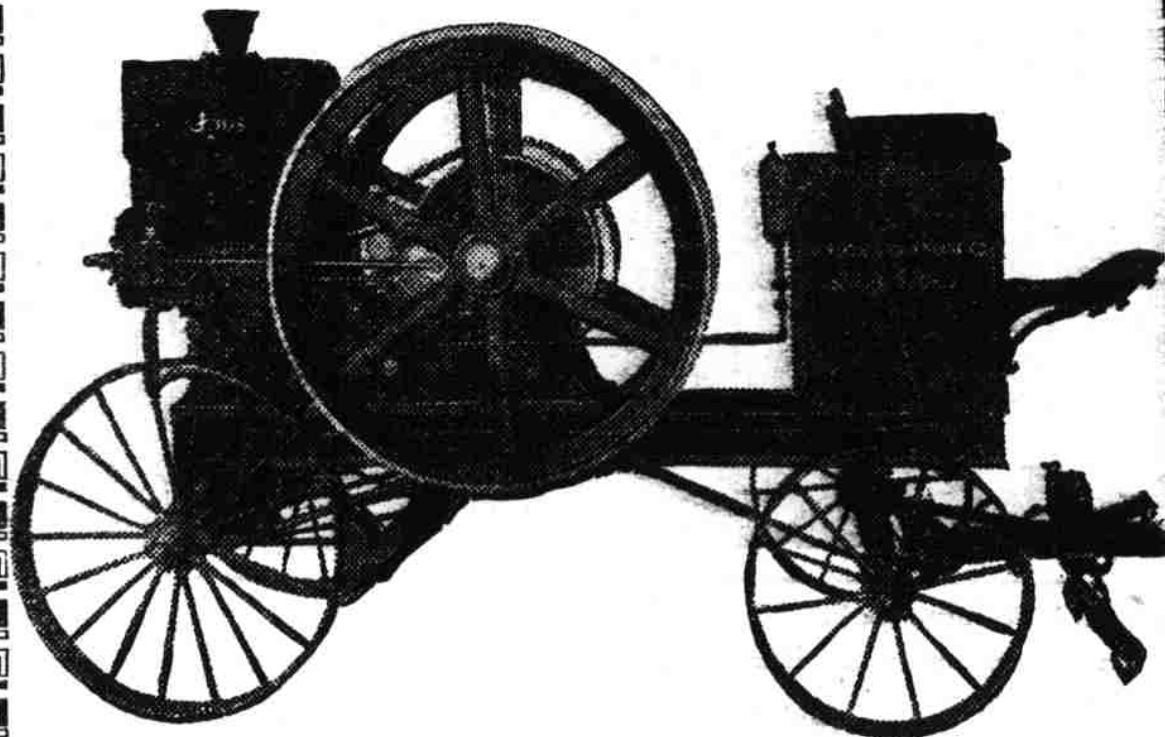
It will cut down housekeepers labor—reduce the cost of fuel—insure better baking.

The tops are cut in four pieces to prevent cracking and warping. The fire boxes are large and so constructed that ashes cannot accumulate. Duplex grates, or Flat Dumping or Shaking Grates. Heavy fire backs in three sections. Deep, large ash pits with ash chutes, which force ashes to the pan. Sheet flue construction insures strong drawing. Direct draft dampers operated from top, easily removed. Water front of good capacity and fire surface.



Fully Described in Our Catalog

# RICHMOND MERIT RANGES



Made Either Portable or Stationary

## Are You Prepared, Mr. Farmer

TO GIN YOUR COTTON  
TO PICK YOUR PEANUTS  
TO HUSK YOUR CORN  
TO SAW YOUR WOOD



IS LABOR CHEAP AND PLENTIFUL, OR WERE YOU INCONVENIENCED LAST YEAR, IF SO

**Reliable Help** Can be found in the Foss Gasoline and Kerosene Engines.

The best on the market and the cheapest because the value of an engine should be measured by the number of years it will run at its highest efficiency.

AMERICA'S STANDARD ENGINE FOR 29 YEARS

**STOCKDELL-MYERS CO.**

MACHINERY OF EVERY DESCRIPTION

PETERSBURG, VA.



## Here's the HUSTLER Saw Mill

YOU'VE HEARD SO MUCH ABOUT—built especially to saw lumber better and quicker than any other mill, and to last longer. It is the lightest running, fastest cutting little mill you ever saw—easy to handle, durable and satisfactory. Has the famous Hustler variable belt feed works, the best ever invented, wire cable drive, steel head blocks, steel dogs, automatic offset of the log when pligged back, spring receder, steel lined carriage. Manufactured by

**SALEM IRON WORKS,**  
Winston-Salem, N. C., and Columbia, S. C.  
Address Nearest Point.

# THE PROGRESSIVE FARMER

OFFICES:

Birmingham, Ala., Raleigh, N. C., Memphis, Tenn., and Dallas, Tex.  
New York Office, 41 Park Row; Chicago Office, 400 Advertising Building.

COMMUNICATIONS REGARDING ADVERTISING OR SUBSCRIPTIONS MAY BE ADDRESSED TO EITHER OFFICE. ENTERED AS SECOND-CLASS MATTER AT THE POSTOFFICE AT BIRMINGHAM, ALA., UNDER THE ACT OF CONGRESS OF MARCH 3, 1879.

## SUBSCRIPTION RATES

One year, \$1; six months, 50 cents; three months, 25 cents. Long-term subscriptions, if paid wholly in advance: two years, \$1.60; three years, \$2; five years, \$3. Foreign subscriptions, \$2 a year; Canadian, \$1.50.

## OUR TWO BEST SUBSCRIPTION OFFERS

One old subscriber and one new subscriber, if sent together, can get The Progressive Farmer one year for \$1.50. A club of three yearly subscriptions, if sent together, all for \$2.

## YOUR LABEL IS YOUR RECEIPT

The date to which your subscription is paid is given on the little red or yellow slip on page 1 opposite your name, printed thus, "John Doe, 31 Dec. 14," means that Mr. Doe is paid up to December 31, 1914, etc. After you send in your renewal, it requires about ten days to have this date changed and properly corrected on your label. Please advise us promptly if the label date does not properly show when your subscription expires.

## Each Advertiser's Reliability Guaranteed

WE WILL positively make good the loss sustained by any subscriber as a result of fraudulent misrepresentations made in The Progressive Farmer on the part of any advertiser who proves to be a deliberate swindler. This does not mean that we will try to adjust trifling disputes between reliable business houses and their patrons, but in any case of actually fraudulent dealings, we will make good to the subscriber as we have just indicated. The conditions of this guarantee are, that the claim for loss shall be reported to us within one month after the advertisement appears in our paper and after the transaction complained of; that our liability shall cover only the purchase price of the article in question, nor aggregate over \$1,000 on any one advertiser, and that the subscriber must say when writing each advertiser: "I am writing you as an advertiser in The Progressive Farmer, which guarantees the reliability of all advertising it carries."

Readers in the Carolinas, Virginia, Georgia and Florida should always address their letters to

**THE PROGRESSIVE FARMER, Raleigh, N. C.**

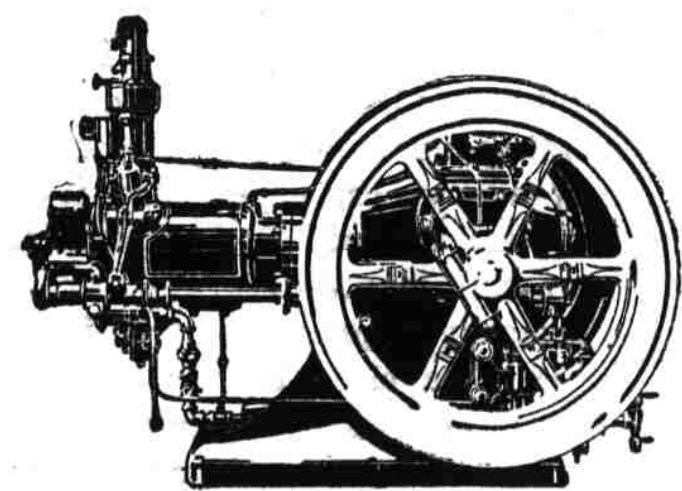
## RUSH YOUR LETTERS FOR OUR COÖPERATION SPECIAL, NOVEMBER 14

As announced last week, our issue of November 14 is to be a Coöperation Special. For this number we want concrete, snappy stories of actual, successful coöperation. There are hundreds of our readers who have taken an active part in some form of coöperation that has resulted in general community betterment, and it is of these coöperative efforts that we wish you to tell us.

Remember, we do not care for academic theories about how folks ought to coöperate, but stories of how it has actually been done.

All letters must reach us not later than November 2.

# International Harvester Engines Give You Cheapest Power



WISE farmers buy International Harvester engines—Mogul or Titan—engines of standard construction with such features as accurately fitted piston and rings, extra large valves, prompt repair service, use of cheapest local fuel—features that make them last by far the longest and save the most money in the end.

Be sure when you buy your engine that it is an I H C engine, and you will be sure of best material and best construction. They are made portable, stationary, or skidded; vertical or horizontal; air or water-cooled. Sizes range from 1 to 50-H. P. They operate on both low and high grade fuels.

Not every local dealer can show you International Harvester engines. Write us for interesting catalogs and full information, and we will tell you the name of the local dealer who handles our engines.

## The IHC Line

- GRAIN AND HAY MACHINES
- Binders, Reapers
- Headers, Mowers
- Rakes, Stackers
- Hay Loaders
- Hay Presses
- CORN MACHINES
- Planters, Pickers
- Binders, Cultivators
- Essilage Cutters
- Shellers, Shredders
- TILLAGE
- Peg, Spring-Tooth, and Disk Harrows
- Cultivators
- GENERAL LINE
- Oil and Gas Engines
- Oil Tractors
- Manure Spreaders
- Cream Separators
- Farm Wagons
- Motor Trucks
- Thrashers
- Grain Drills
- Feed Grinders
- Knife Grinders
- Binder Twine

**International Harvester Company of America**



CHICAGO

Champion Deering McCormick Milwaukee Osborne Plano

USA

