

John Deere Implements

A New Book
Free

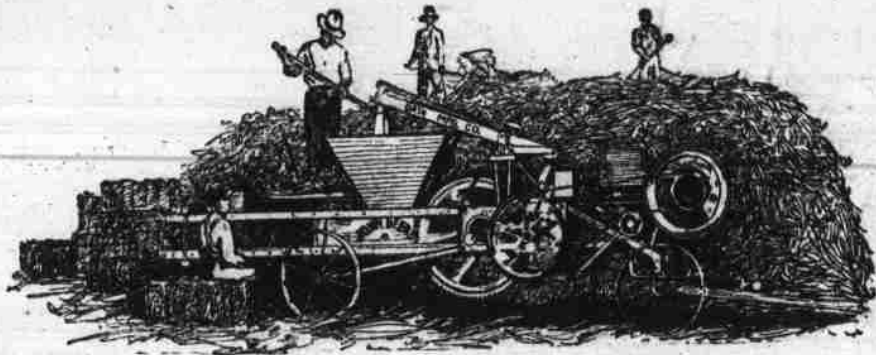


Just Off the Press

Illustrates and describes the most complete line of farm implements. Tells how to adjust and use farm tools under varying conditions. It is a practical encyclopedia of farm implements worth dollars to you—a 168 page text book.

It tells about John Deere Implements: Steel plows, cultivators and harrows; corn planters, disc harrows and beet tools; farm and mountain wagons; manure spreaders; portable and stationary grain elevators and corn shellers; hay loaders, stackers, sweep rakes, mowers and side delivery rakes; motor hay presses; grain drills and seeders; full line of chilled plows; grain binders and corn binders; hit-and-miss and volume-governing gasoline engines.

To get this book free, state what special implements you are interested in and ask for the book as Package No. X-2.



John Deere Motor Press

The Press with the powerful eccentric gears. Gears are mounted off center, giving more power on the working stroke, a quicker return of plunger and very desirable action of the self-feed—the three points of prime importance.

Easily bales 2 to 4 tons per hour without any jar or shock.

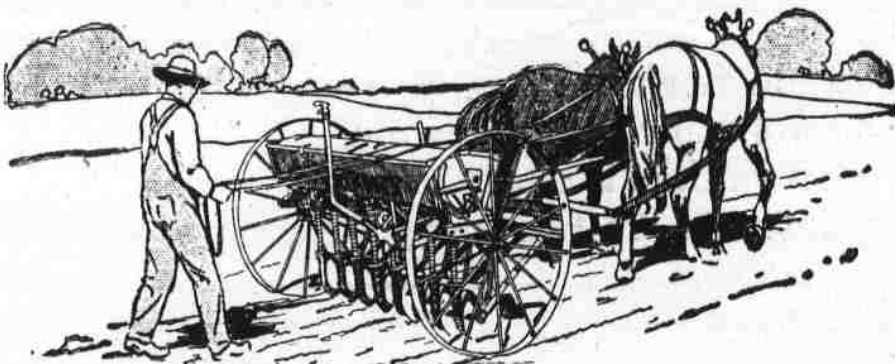
Powerful self-feed arm and plunger, improved form of drop blocker and automatic tucker insure well shaped, firmly packed, smooth end bales,—the kind that bring the highest price.

Entire outfit is always ready for work. No lining up of engine required.

Wide track front axles with a fifth wheel is why this press stands up so well and is so easily moved.

Made in three sizes for 14x18, 16x18 and 18x22" bales.

Write if interested in Hay Press, Loader, Stacker, Side Delivery Rake or other hay tools—and ask for free book, "Better Hay—How to Make and Market It".



Van Brunt Single Disc Grain Drills

Plant any small grain, from alfalfa to bearded oats, corn and peas, even in trash, gumbo or mud.

Van Brunt Drills never choke. Adjustable gate force feed compels an even, continuous flow through each seed tube. Amount sown regulated simply by moving a lever.

Seed is planted at even depth. Individually adjustable springs enable you to give each furrow opener the required pressure for hard or soft ground to make furrows of even depth, and the seed is placed at the bottom of the furrows. All of the grain is up and ready for harvest at the same time.

Van Brunt Drills are light weight, light draft, well balanced and strong. Frame is rigid; hopper does not sag; the gear drive is positive (each wheel drives half the feeds) and the disc bearings are guaranteed to last lifetime of drill. Spring steel scrapers keep the discs clean.

Write us for free booklet, "John Deere-Van Brunt Single Disc Drills." It tells why the Van Brunt plants seed at bottom of furrows of uniform depth, and what this means to you.

John Deere Publicity Department, Moline, Illinois

WHIRLWIND SILO FILLER

"THE Whirlwind is certainly a glutton for work", writes one of many enthusiastic owners.—"It takes the fodder as fast as we can get it there and elevates 'way way up—no band cutting, chokes, or break-downs."

That's what all Whirlwinds do—be one piece Main Wheel, the heaviest made, means fast work, uniform speed, uniformly applied centrifugal strain and therefore absolute safety.

Fewest working parts, hence least friction. Every piece of Whirlwind iron withstands from 9,000 to 17,000 lbs. greater strains per sq. in. than high grade cast.

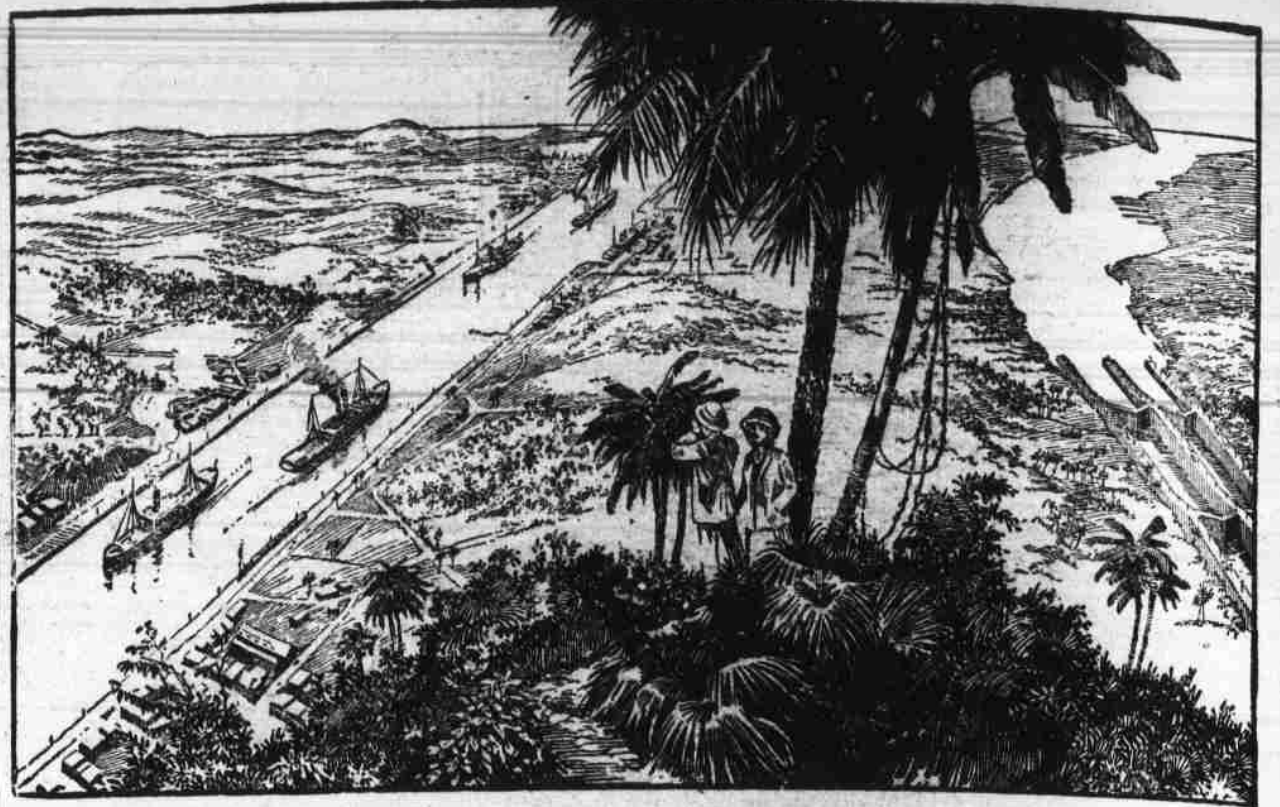
It pays to investigate carefully before buying. Write for our free catalogue and book: "Why and How to Fill A Silo." Learn how to judge the real essentials of a Silo Filler.

There's a lot of inside information in our free weekly WHIRLWIND BULLETIN to Agents. It's yours for the asking.

Wildner-Strong Impl't Co.
Box 81 Monroe, Michigan



WHIRLWIND
SIZE G



The Price of Progress

THE Panama Canal stands as one of the most marvelous achievements of the age. Into its construction went not only the highest engineering skill, but the best business brains of the nation, backed by hundreds of millions of dollars.

Suppose conditions not to be foreseen made it necessary to replace the present canal with a new and larger waterway of the sea-level type, to be built in the next ten years.

Also suppose that this new canal would be the means of a great saving in time and money to the canal-using public, because of the rapid progress in canal engineering.

This sounds improbable; yet it illustrates exactly what has happened in the development of the telephone, and what certainly will happen again.

Increasing demands upon the telephone system, calling for more extended and better service, forced removal of every part of the plant not equal to these demands. Switchboards, cables, wires and the telephone instrument itself were changed time and again, as fast as the advancing art of the telephone could improve them.

It was practical to do all this because it greatly increased the capacity of the plant, reduced service rates and added subscribers by the hundred thousand.

In ten years, the telephone plant of the Bell System has been rebuilt and renewed, piece by piece, at an expense exceeding the cost of the Canal.

Thus the Bell System is kept at the highest point of efficiency, always apace with the telephone requirements of the public. And the usefulness of the telephone has been extended to all the people.



AMERICAN TELEPHONE AND TELEGRAPH COMPANY
AND ASSOCIATED COMPANIES

One Policy One System Universal Service

Peeling Peaches
With RED DEVIL LYE

THE NEW WAY

GREAT BIG CANS 5¢

THE OLD WAY

Mr. King Pharr, canner, of Catherine, Ala., wrote us as follows:

"At your suggestion I tried Red Devil Lye for peeling peaches. It was so successful that I bought six cases and am saving \$25.00 to \$50.00 every day—and peeling thousands of bushels. I feel that I must thank you."

Send for Booklet that explains

WM. SCHIELD MFG. CO., Dept. C., ST. LOUIS, MO.

\$10 A DAY—THAT'S WHAT YOU CAN MAKE WITH A

RANEY CANNER

\$10 a day for girls and women, 'Bigger money than that for men. The RANEY turns surplus fruit and vegetables into cash. Produces finer food than big canneries. Works glass or tin for home or market. INSTRUCTION BOOK FREE WITH EACH OUTLET. Canners \$5 and up. RANEY is patented—has greater fire surface—keeps water always boiling. Used by Government Demonstrators. Get started in this money-making business. Write for catalogue now.

CHATTANOOGA ROOFING & FOUNDRY CO., Dept. 234, Chattanooga, Tenn.

When writing to advertisers say: "I am writing you as an advertiser in The Progressive Farmer, which guarantees the reliability of all advertising it carries."

ROSS Ensilage Cutters and Silo Fillers with Blower

STEEL Cutting Apparatus and Blower (instead of cast iron).

Especially designed for steam power and extraordinarily heavy work. Steel is known to be stronger than cast iron. The Ross is not an ordinary fodder cutter but a special made machine for filling silos. We have manufactured the Ross for 35 years, and to-day it will by its own actions prove its superiority. Write for catalog.

We also manufacture the Ross Wood and IN-DE-STR-UCT-O Metal Silo.

Guaranteed free from defects for life of machine.

THE E. W. ROSS CO., Box 157 Springfield, O.