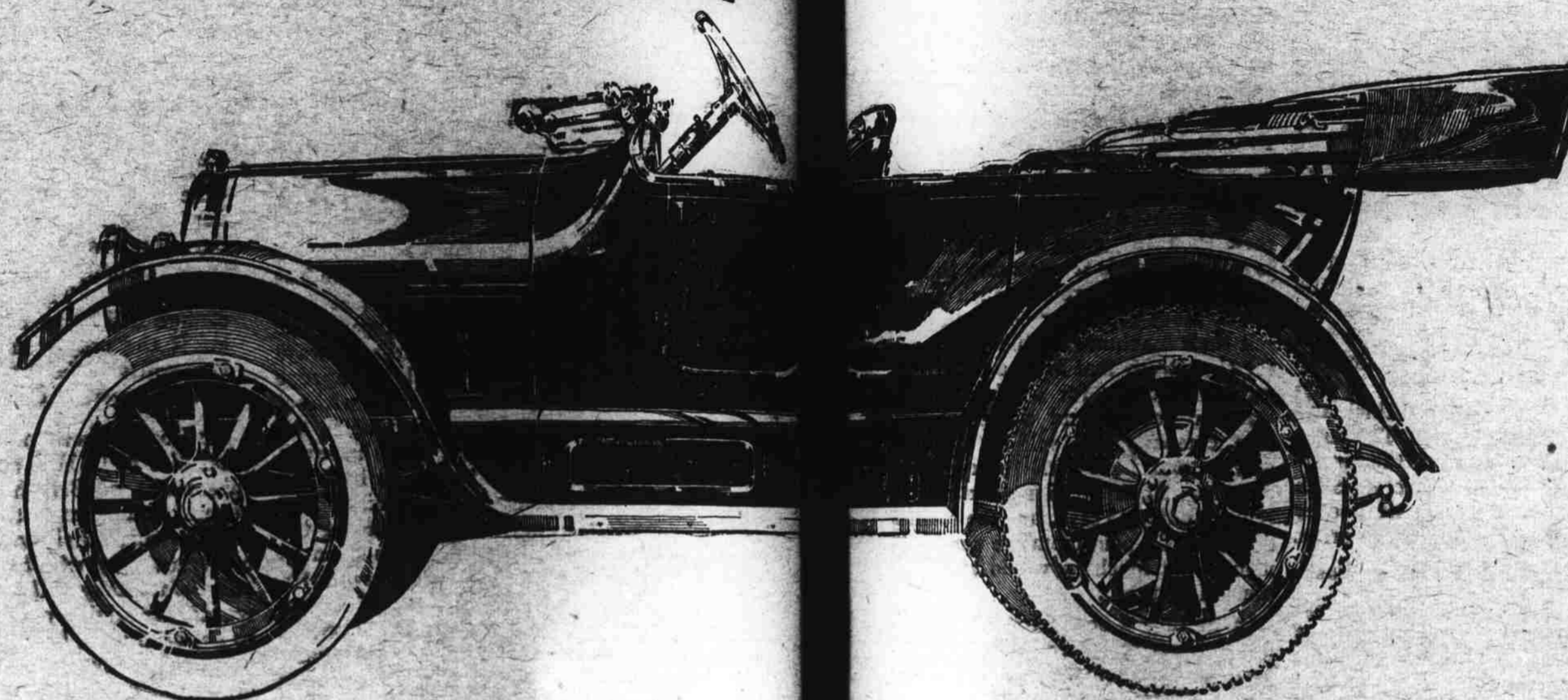


\$750

Model 83 f. o. b. Toledo
Roadster - \$725

This is the largest 4-cylinder Overland that will be produced this year



\$750

Model 83 f. o. b. Toledo
Roadster - \$725

This is the largest 4-cylinder Overland that will be produced this year

The Newest Overland—\$5 Less Than Last Year

THE 1916 Overland is in many particulars the same as the 1915 Overland—the famous Model 80 that sold for \$1075.

But the price is \$325 less.

The stream-line body is the same design as the \$1075 model of last season.

It has the same magnificent finish; that deep, rich tone of dark Brewster green with fine hairline striping of clear ivory-white.

It has the same powerful, economical thirty-five horsepower, four-cylinder motor but weighs less.

It has high-tension magneto ignition.

It has the same underslung rear springs. It has the convenient arrangement of electric control buttons on the steering column.

It has the same easy-working clutch which any woman can operate; the same

to handle" shifting levers; the same "steer with" wheel; the same positive brakes.

It has 33" x 4" tires which is unusual for a car at this price.

In detail, finish, mechanical fineness, comforts and conveniences, this newest Overland gives you all there was in the \$1075 model and even more power.

And it costs you but \$750—\$325 less than last season's large 35 horsepower Overland.

This car is on display at our dealers. Deliveries are being made now all over the country.

Every Overland dealer already has a waiting list.

Place your order immediately and you can be sure of a speedy delivery.

35 horsepower motor
High-tension magneto ignition
5-Bearing crankshaft
Thermo-syphon cooling

Underslung rear springs
33" x 4" tires; non-skid in rear
Demountable rims; with one extra
Electric starting and lighting system

Specifications:

Light dimmers
Close-up vision, ventilating type, built-in windshield
Instrument board on cowl dash

Left-hand drive, center control
One-man top; top cover
Magnetic speedometer

Handsomeness catalogue
Please address Dept. 99

The Willys-Overland Company, Toledo, Ohio

New Models Now on Display at Panama Pacific Exposition

