



"Good News for Farm Women"

Orange, N. J., March 1, 1916

Dear Mrs. Dairywoman:—

The bearer of good news is always welcome; and I have some very good news for farm women. We've a new separator at our house and it's a wonder.

One splendid feature of this new invention which must have been planned with the comfort of the dairy woman in mind is the knee-high supply can. This does away with the hard, high lift no woman should be asked to endure day after day. It's only a few inches to lift and a tilt of the pail, even for a small boy. This is one item of good news.

Cleanliness is the beginning, middle, and end of good dairy work. You know how quickly the separator shows the effect of any slight letting up in this direction. With dishes to wash three times a day, cooking utensils, calf pails, milk pails, etc., a big pile of separator disks is just about the "last straw", isn't it? But with our new Sharples there are only three pieces to clean, not one heavy, bulky, or fussy. This is the second piece of good news.

Formerly, a slight slowing of speed in turning the handle of the separator meant a loss of cream—and money. One's attention had to be strictly on turning the crank at an unvarying high speed, which was trying to both mind and strength. My third and best piece of good news is that

THE NEW SHARPLES SUCTION-FEED

Separator draws up into the bowl just the right amount of milk—always in proportion to the separating force. If you feel out of sorts, you may turn slowly and the bowl will drink up just enough milk for clean skimming and no more. If you feel spry and want to get through to sew, to trim a hat, or to visit a neighbor, turn as fast as you please and the bowl will take up proportionally more milk, yet the cream will be of the same thickness. Smooth, even cream, such as the Suction-feed gives you makes quality butter that brings top prices.

The separator has only one thing to do while you have many tasks. The separator has always been a tyrant which insisted on being turned at regulation speed, whether you were well or ill, worried or happy, rested or worn out. But this new Suction-feed Separator meets your moods. Its speed is your speed and yet, it gets all the cream all the time.

Why don't you drop a postal to the Sharples people for their new book? Then, you can show your husband that this new invention will be a money saver for him as well as a labor saver for you.

Yours truly,

A Dairywoman

What this farm woman says in her letter is absolutely true. There are many other pieces of good news in our new book, "Velvet" for Dairywomen, which fully describes this wonderful separator. Send for your copy today. Address Dept. 121



The bowl is easy to wash. There are only three parts, and no disk.

The Sharples Separator Co.

Also Sharples Milkers and Gasoline Engines

West Chester Pennsylvania

Chicago San Francisco Portland Toronto

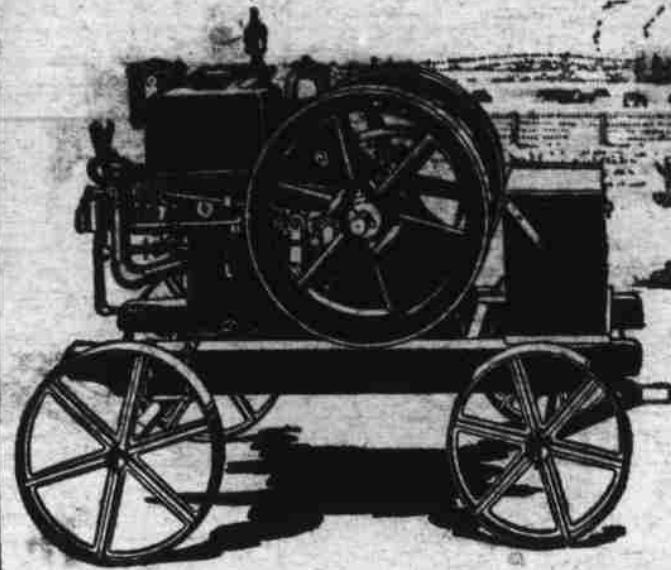
Light Running Silberzahn "THE KING OF ENSILAGE CUTTERS"

is known everywhere for its great simplicity, strength and durability, its can't clog and safety features, its absolute supremacy among ensilage cutters. It stands the test of hardest work. Guaranteed to do more and better work on less power than any other ensilage cutter on the market. Write for catalog and proof.

GEHL BROS. MFG. CO., 1117 S. Water St., West Bend, Wis.



Power for Forty Farms



Mogul and Titan Engines



TWENTY Titan engines of all sizes, all kerosene burners, were lined up in front of the I H C dealer's store at Litchfield, Minn., one day last summer. That day their new owners took them out to supply good, reliable power on twenty farms. A few months later Litchfield saw twenty more farmers take Titan engines out to their farms.

Two big I H C engine delivery days in that town last year. In many hundreds of towns you will find this same popularity of I H C Mogul and Titan engines—the best farm power—Grand Prize winners at San Francisco.

You must have an engine—then buy an International Harvester engine—Mogul or Titan. It will keep down your fuel and repair bills, deliver the most power with least trouble, and save you more hard work than you can realize now.

International Harvester engines are made in all approved styles, sizes from 1 to 50-horse power, operating on low as well as high-grade fuels. Some local dealer near you handles Mogul or Titan engines. If you don't know him, drop us a line. We'll send you full information, and make it easy for you to get the best farm engine made.

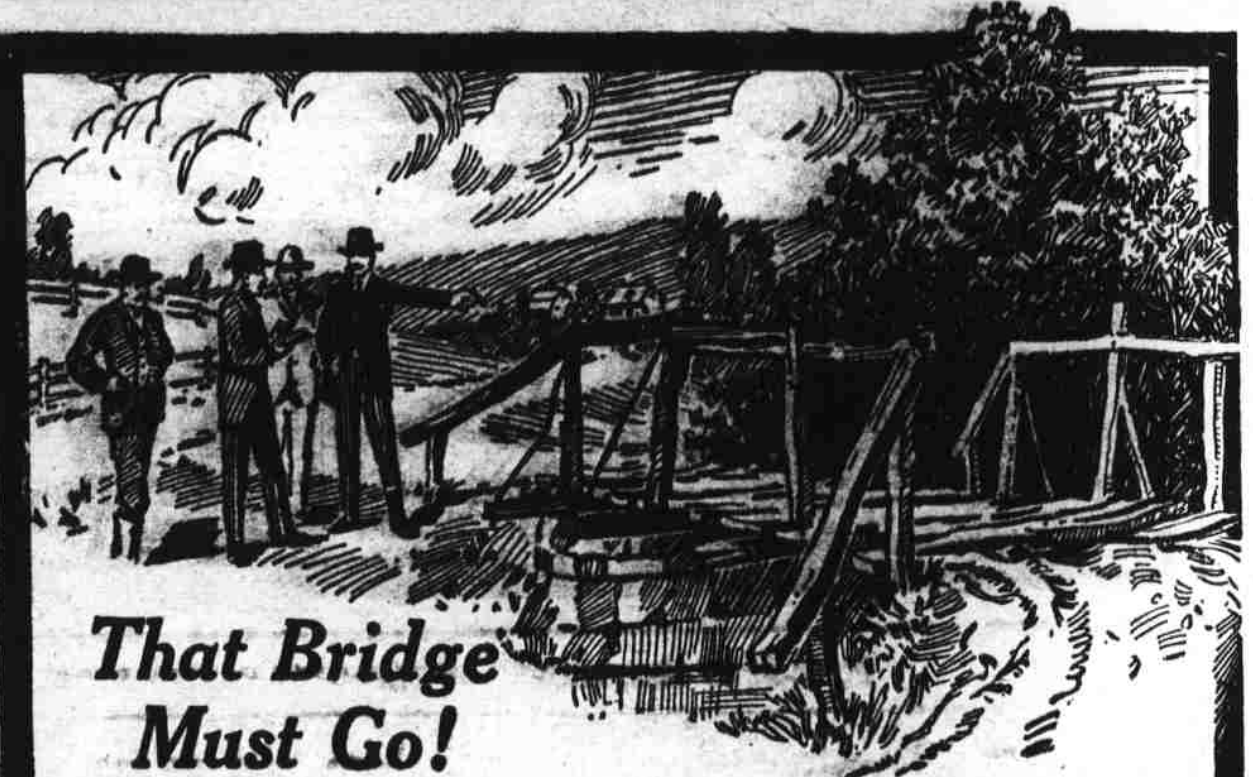
International Harvester Company of America

(Incorporated)

CHICAGO

USA

Champion Deering McCormick Milwaukee Osborne Plano



That Bridge Must Go!

The "Safety First" idea rules the country today. The public is demanding that the highways be made as safe as the railroads and traction lines. Wooden bridges must give way to

"ARMCO" IRON CORRUGATED CULVERTS

These culverts are not only absolutely safe but moderate in first cost, inexpensive of installation and entirely free from up-keep costs. The fact that they are made of "ARMCO" IRON insures unequalled rust resistance and life-time service. Specify "Armco" (American Ingot) Iron and insist on seeing the Triangle Trade-Mark on every section. This is your assurance that your taxes are being spent for the public benefit.

For full information on "Armco" Iron Culverts, Flumes, Sheets, Roofing and Formed Products, write the manufacturer in your vicinity, or ARMCO IRON CULVERT MANUFACTURERS ASSOCIATION Cincinnati, Ohio



Land clearing an easy, one-man job—big stumps pulled clean with this wonderful machine.

K HAND POWER Stump Puller

Works on any land. Operated by hand! No horses, no digging. Made of forged Krupp steel—guaranteed. Adopted and used by U.S. Government officials and many states. Send for free illustrated book on Land Clearing and special offer.

Drop a postal to W. J. FITZPATRICK Box 19 902 Fifth Street San Francisco, Calif.