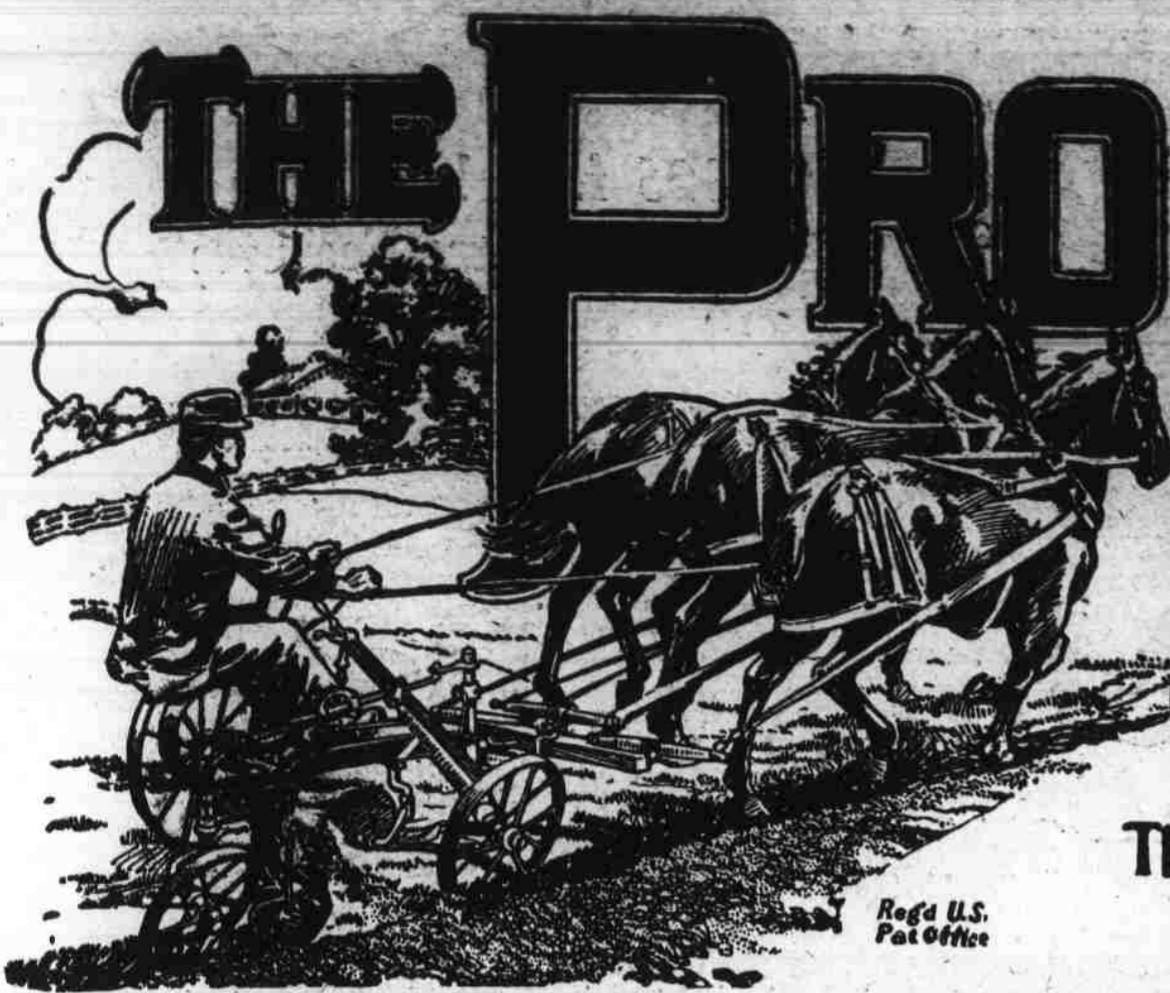


TIMBER CROP SPECIAL



# THE PROGRESSIVE FARMER

AND SOUTHERN FARM GAZETTE

A Farm and Home Weekly for  
The Carolinas, Virginia, Georgia, and Florida.

FOUNDED 1886, AT RALEIGH, N. C.

Vol. XXXI. No. 21.

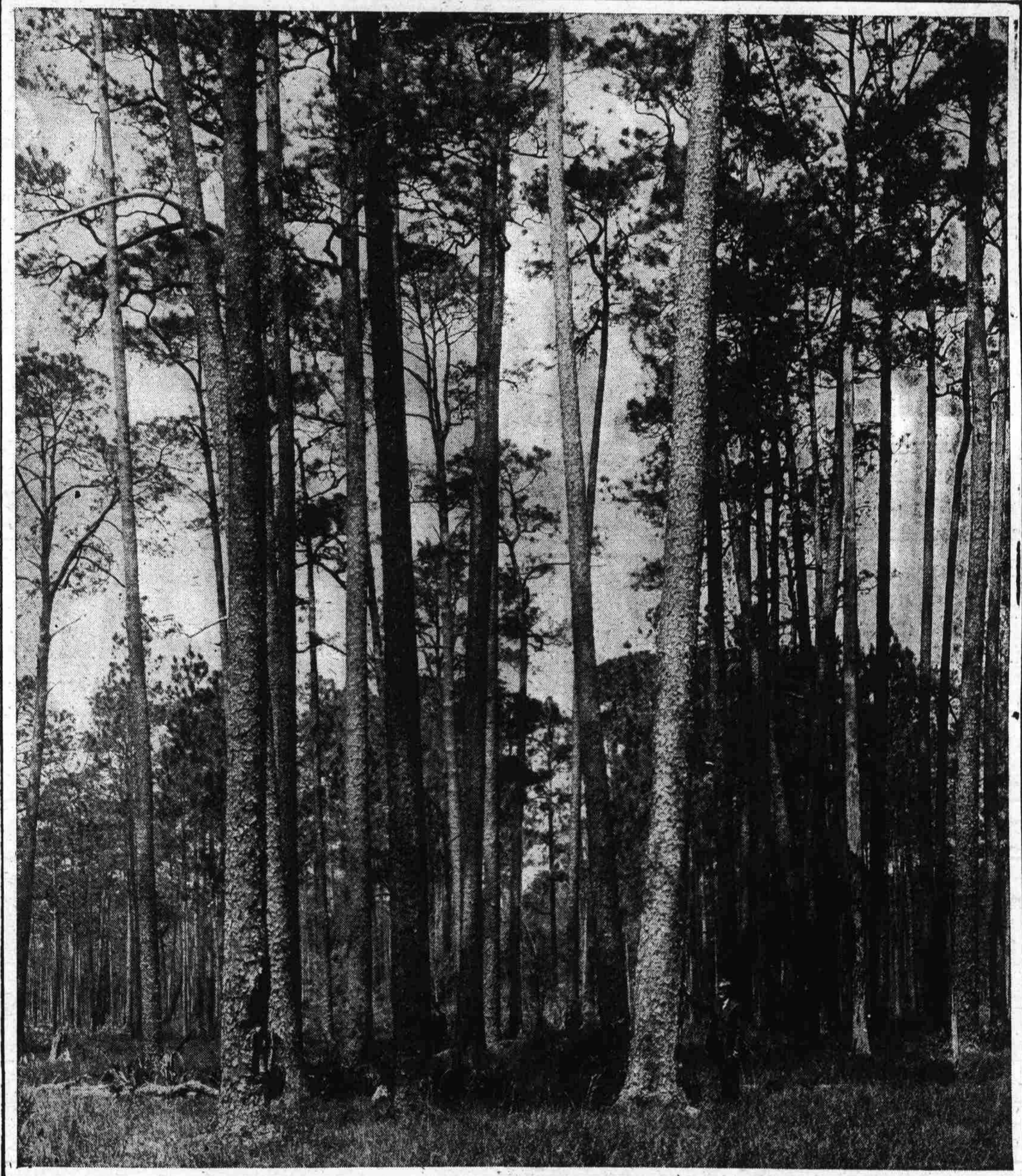
SATURDAY, MAY 20, 1916.

\$1 a Year; 5c. a Copy



## A Yellow Pine Forest

Southern People  
Have Lost Millions  
of Dollars by  
Not Knowing the  
Value of Their  
Timber; Millions  
More Will Be Lost  
Unless we Awake  
to This Value



### DON'T FAIL TO READ—

	Page		Page
A Problem in Dairy Farm Management . . . . .	3	Fire Costs Southern Farmers Millions of Dollars Annually . . . . .	14
We Must Raise More and Better Hogs . . . . .	4	Put Away the Surplus for Winter Use . . . . .	14
A Message From the Chief Forester of the United States . . . . .	5	Uncle John Gives Us a Health Talk . . . . .	14
A Success Talk by Senator Theodore E. Burton . . . . .	5	Coöperation for Timber Owners . . . . .	15
Pinchot Urges Coöperation in Timber Marketing . . . . .	5	Rural Credits at Last . . . . .	15
Improving the Farm Forest . . . . .	6	How to Prepare School Lunches . . . . .	16
Cultivation: Killing Weeds and Saving Moisture . . . . .	10	Candidates Answer Union Inquiries . . . . .	20