

If it hasn't this Red Woven Label

MADE FOR THE
B.V.D.
BEST RETAIL TRADE

It isn't B.V.D. Underwear



FORM the habit of looking for the B. V. D. Label. A Summer of comfort is worth a few seconds of time.

In our own modernly equipped Cotton Mills at Lexington, N. C., the fabric from which these Loose-Fitting B.V.D. Undergarments are made, is woven from specially selected cotton. This assures durability in wash and wear.

In our own B. V. D. Factories the garments are skillfully cut, evenly stitched and accurately finished to fit and to be cool and comfortable all day long.

B. V. D. Coat Cut Undershirts and Knee Length Drawers, 50 cents the Garment. B. V. D. Closed Crotch Union Suits (Pat. U. S. A.) the \$1.00 Suit.

The B. V. D. Company,
New York.



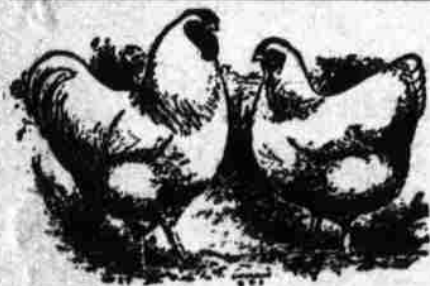
Copyright U.S.A. 1917 by
The B.V.D. Company

Ear Tags FOR STOCK

Tag your stock—best and cheapest means of identification for Hogs, Sheep and Cattle. Name, address and number stamped on tags. Catalog and samples free on request. F. S. Birch & Co., 184 W. Wabash St. Chicago

RAILROADS LOSE LANDS—2,300,000 acres in fertile Oregon forfeited to government by Southern Pacific Railroad. Will be opened to homesteading. Write quick for free information—send no money. F. M. Anderson, Povey Bldg., Portland, Ore.

When writing to advertisers, say: "I am writing you as an advertiser in The Progressive Farmer, which guarantees the reliability of all advertising it carries."



Nomination Form



FOR THE PROGRESSIVE FARMER PURE-BRED PIG AND CHICKEN CLUB.

Enclosed find \$_____ for _____ years subscription for

Name of Subscriber.

Post Office _____ State _____ Route _____

Credit the foregoing subscription and enter the following in The Progressive Farmer Pig and Chicken Club.

Name of Club Worker

Post Office _____ State _____ Route _____

A Bigger Yield From the Same Field

From any field that you have been manuring by the hand method you can get a bigger yield if you use the spreader method—and save much time and labor.

A good spreader tears up the manure into small particles and spreads it evenly. The manure goes farther. It can be worked well into the seed bed so that the plant roots get all of its valuable plant food. *Wasting manure is like wasting money—a good spreader makes every particle of manure count.* A Newton County, Ind., farmer testing the spreader and hand methods of applying manure on two ten-acre tracts found that the spreader method gave 120 more bushels of corn, 140 more bushels of oats and 9 more tons of clover.

The John Deere Spreader

The Spreader with the Beater On the Axle

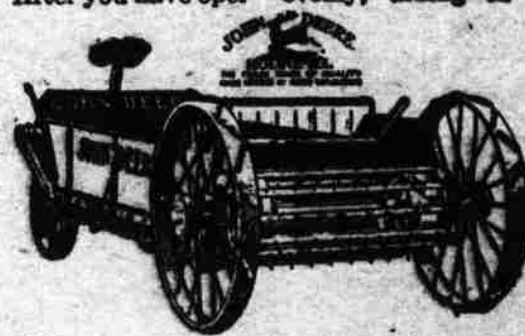
has special capabilities for increasing your crop yields. Its exclusive features make it the ideal implement for the best method. Ask any owner of the John Deere Spreader about the way it increases crop yields and saves time and labor. After you have operated a John Deere Spreader of your own for a year, you will fully appreciate how much these gains really mean. You'll find that the Spreader with the Beater on the Axle more than pays for itself in one year from the gains it gets on even a fair-sized farm.

The beater on the axle construction eliminates all chains, clutches and scores of other trouble-making parts. Does away with half the types of castings otherwise necessary. Does away with adjustments. Puts upkeep at minimum. Makes the John Deere Spreader exceptionally long-lived.

Beater is all steel—practically indestructible—runs on roller bearings, aiding light

draft. Beater teeth spirally arranged—tear up manure perfectly and distribute it evenly. Deliver manure close to the ground—wind does not affect spreading.

Revolving rake feeds manure to beater evenly, aiding in uniform distribution. Shock-absorbing spring relieves spreader and horses of sudden strains.



Spreader only high to top—easy to load. Big drive wheels—light draft. Ball-bearing apron drive—apron travel frictionless. Simple

gear attachment keeps weight of load from making apron race when spreading up hill.

Easy to operate—only two levers—one lever determines number of loads spread to the acre; the other starts and stops the spreading. It's so simple, a boy can operate it.

Wide-spread attachment for extra wide spreading.

Write for booklet on the John Deere Spreader.

The Bottom Is the Heart of the Plow

The right kind of plow bottom lays the foundation for the right kind of seed bed. Crop yield is increased. The plow lasts longer and pulls lighter—a saving in actual cost, power, trouble.

John Deere Tractor Plows

Have the Famous John Deere Plow Bottoms

The bottom on every John Deere plow is correctly designed—John Deere plow success is largely due to bottom construction. It is the result of eighty years' experience.

These plows can be used with any style tractor. Hitch has a wide range of adjustment. They make one-man tractor plowing outfits. A pull of the rope by the man on the tractor lowers or raises the bottoms high and level, and the tractor does the

work. The bottoms do not gather trash in turning or when plow is being transported.

John Deere Light Tractor Plows can be backed up—they have stiff hitch.

Equipped with John Deere Quick Detachable Shares—save eight to thirty minutes changing each share.

Write for free booklet.



Big Book Free



Better Farm Implements and How to Use Them

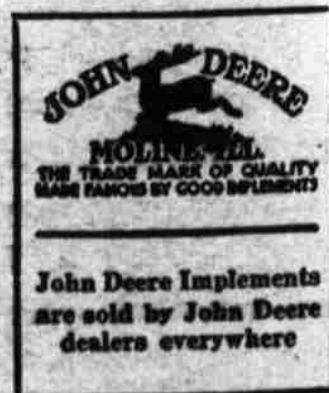
America must produce more food. Labor-saving implements will play an important part in increased crop production.

This book tells all about a full line of labor-saving farming implements. Tells how to adjust and operate many of them. A practical farm implement encyclopedia. Worth dollars. Illustrates and describes the following machines: Walking and Riding Plows, Tractor Plows, Disc Plows, Disc Harrows, Spring Tooth and Spike Tooth Harrows, Corn and Cotton Planters and Drills, Listers, Alfalfa and Beet Tools, Grain Drills and Seeders, Riding and Walking Cultivators, Lister Cultivators, Mowers, Side Rakes, Loaders, Sweep Rakes and Stackers, Hay Presses, Grain and Corn Binders, Corn Cutters, Stalk Cutters, Kaffir Headers, Manure Spreaders, Portable and Inside Cup Elevators, Corn Shellers, Wagons, Farm Trucks and Buggies. This big book will be sent FREE if you state the implements in which you are interested and ask for Package X 20.

John Deere Said

In reviewing his career, that he felt most pride in the consciousness that he never produced an implement of poor quality.

The same pride that John Deere felt is the pride of the makers of John Deere implements today. It is a powerful incentive to the maintenance of the high standard to which John Deere tools have been kept for eighty years.



John Deere Implements are sold by John Deere dealers everywhere

JOHN DEERE, MOLINE, ILLINOIS

DON'T forget the big saving on three and five-year subscriptions to The Progressive Farmer:

One year, 52 issues, \$1.00
Two years, 104 issues, 1.50
Three years, 156 issues, \$2.00
Five years, 260 issues, 3.00
Ten years, 520 issues, \$5.00—less than 1c. per copy.