

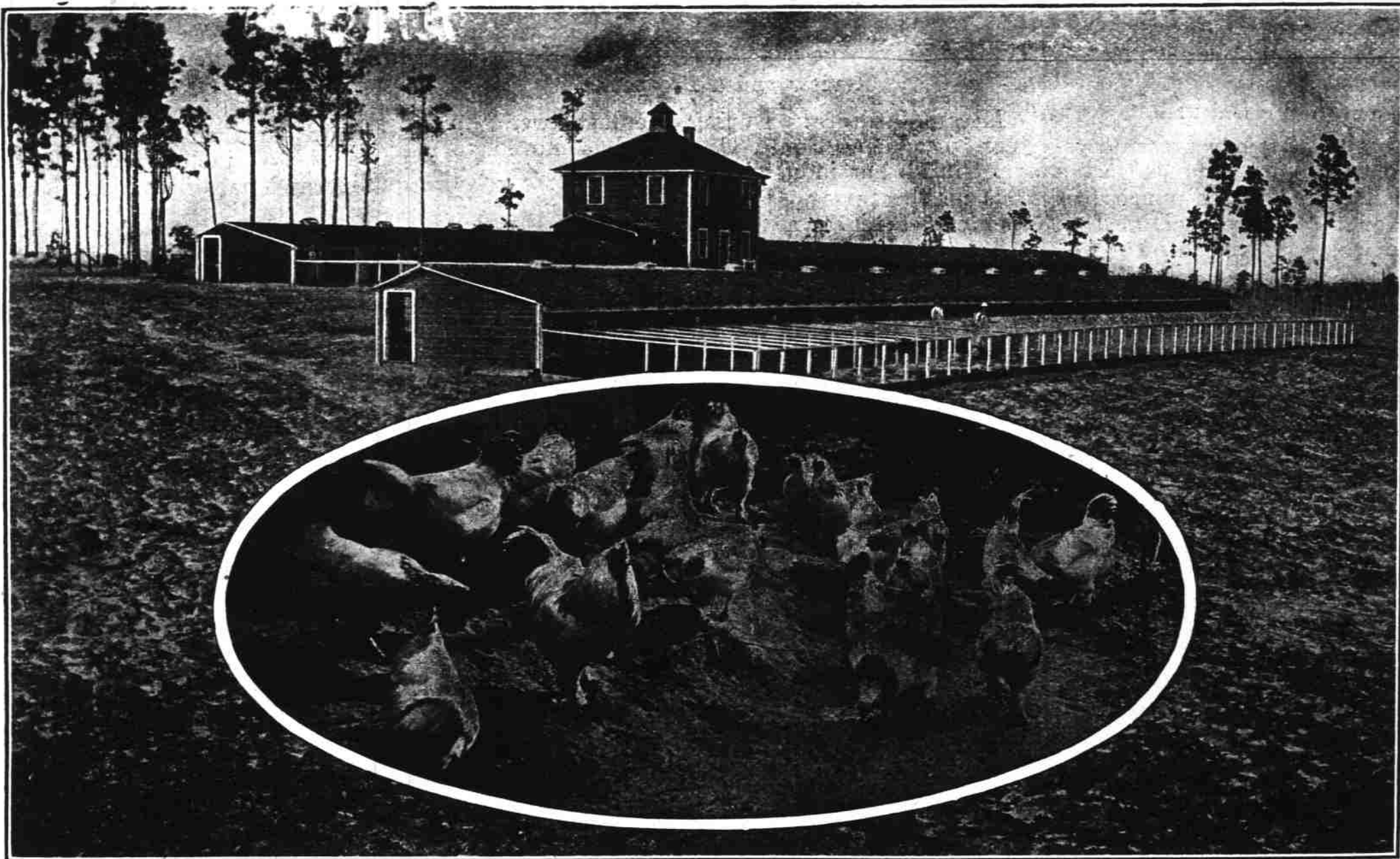
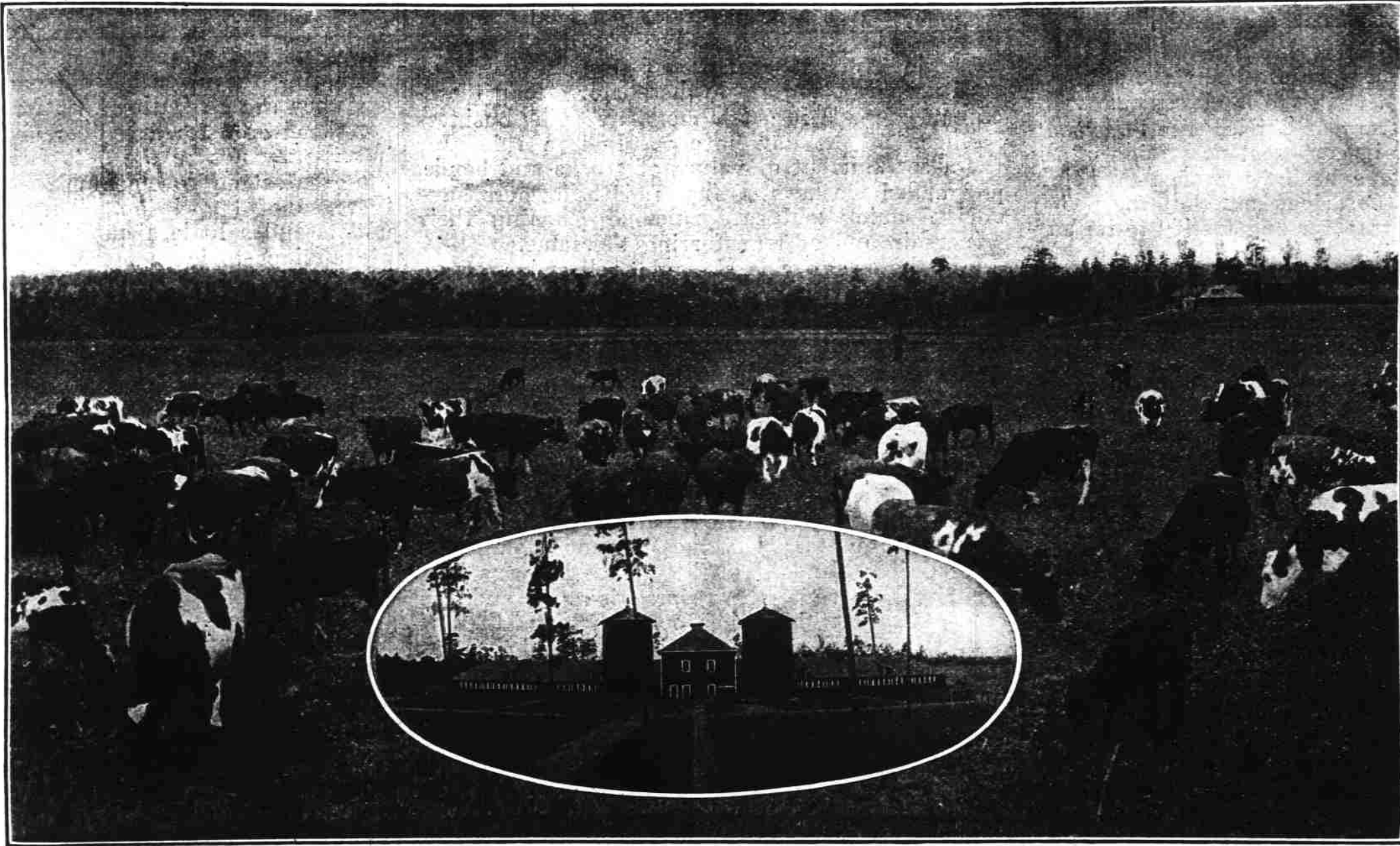
THE PROGRESSIVE FARMER.

Consolidated, 1904, with The Cotton Plant, Greenville, S. C.

PROGRESSIVE FARMER—VOL. XXI. NO. 8
THE COTTON PLANT—VOL. XXIII. NO. 2.

RALEIGH, N. C., MARCH 1, 1906.

Weekly—\$1 a Year.



LIVE STOCK AND POULTRY IN THE SANDHILL SECTION.

These two beautiful views of cattle and cattle barns, poultry and poultry pens, indicate what is being done at Pinehurst, Moore County, N. C., (Pinehurst General Office), in the heart of the sandhill section, to bring more stock and better stock into the Southland.