

# THE PROGRESSIVE FARMER

A Farm and Home Weekly for the Carolinas, Virginia, Tennessee and Georgia.

PROGRESSIVE FARMER—VOL. XXI. NO. 49.  
THE COTTON PLANT—VOL. XXIII. NO. 48.

RALEIGH, N. C., JANUARY 24, 1907.

Weekly: \$1 a Year.

## Peanut Growers Meet in Suffolk.

Organization Completed at January Meeting—Minimum Price of 5½ Cents Fixed, to Increase One-Eighth of a Cent Each Sixty Days—Plans for Jamestown Exhibit.

An interesting official report of the Peanut Growers Association, held at Suffolk, Va., on the 11th instant, sent us by Secretary Stephenson, came to hand just too late to appear in last week's paper. We are giving in this issue, however, the salient points of interest in the business transactions, for The Progressive Farmer has from the first taken a deep interest in these steps to organize the peanut farmers, and we are anxious to give all the aid we can.

At this Suffolk meeting, the first held since the twentieth of last November, Vice President Nat. T. Ridley, of Boykins, Va., presided, and Mr. Gilbert T. Stephenson was secretary. Thirty-three of the local and county unions were represented.

By resolution, the Association was organized as a department of the American Society of Equity, a National organization of farmers to secure profitable prices for farm products.

### The Constitution and By-Laws.

The Constitution and By-Laws provide:

(1) That this organization shall be known as the American Society of Equity, Department of Peanut Growers.

(2) Its membership shall consist of white members of the American Society of Equity, who are producers of peanuts or who are in sympathy with the interests of peanut growers.

(3) The principal office of this organization shall be maintained at the place of residence of its Secretary.

### Purposes and Objects.

(4) The purposes and objects of this organization are to promote the growth of peanuts along conservative lines, market the crops at profitable prices, protect our home markets, and do such other things as will promote the best interests of peanut growers.

(4) The directors shall have charge of the prudential concerns of this organization. They shall have power to hire agents and representatives and decide their compensation, appoint committees and discharge committees and employees, make contracts and agreements; but it is not intended by this section to confer upon said directors the authority to assume any obligation or make any contract for the expenditure of money in excess of such amount as may be in the treasury at the time subject to the draft of said directors.

(5) The expenses of this organization shall be met out of a fund created by the assessment of one-half per cent per bag upon all peanuts grown by the members of the several Local Unions, to be paid to the Secretary of the Local Union at the second

regular meeting in February of each year.

(6) The minimum price at which any crop of peanuts shall sell shall be agreed upon at each annual meeting for the crop of that year.

(7) This organization must be chartered by the National Union of the American Society of Equity. Full power will be conferred upon this organization by the National Union to conduct its own affairs.

### Board of Directors.

The following Directors were elected by a rising vote: Dr. Livius Lankford, Norfolk, Va.; J. T. Bryant, Sunbeam, Va.; S. P. Winborne, Como, N. C.; Dr. R. H. Stancell, Margarettsville, N. C.

### To Maintain Prices.

At the opening of the meeting a committee to report on prices was named as follows: C. F. Whitfield, Southampton Co., Va.; B. C. Roberts, Isle of Wight Co., Va.; E. L. Everitt, Nansemond Co., Va.; R. H. Stancell, Northampton Co., N. C.; S. P. Winborne, Hertford Co., N. C.; C. S. Godwin, Bertie Co., N. C.; J. L. Savage, Chowan Co., N. C.

This committee on price offered the following report:

"1. The members of this Union have on hand 73 per cent of their production. The non-members hold 29 4-5 per cent of their production.

"2. The price of peanuts (farmers' grade) shall remain at 5 1-2 cents per pound for sixty days from January 15th, 1907. At the expiration of these 60 days the price shall be advanced ½ cent, and ½ cent for every 60 days thereafter, until our regular meeting to be held in September, 1907."

### Exhibit at Jamestown.

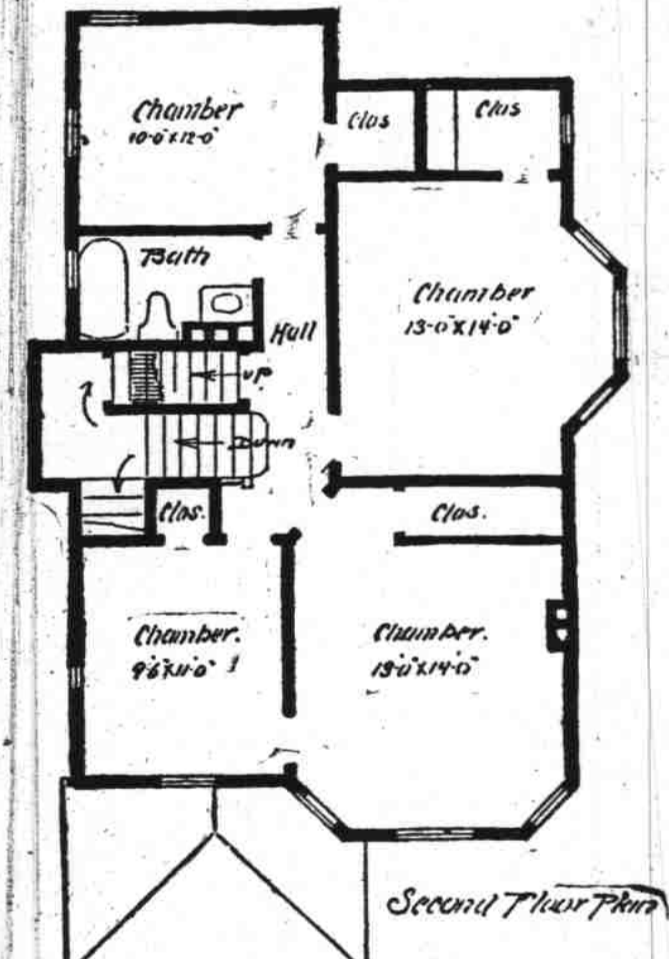
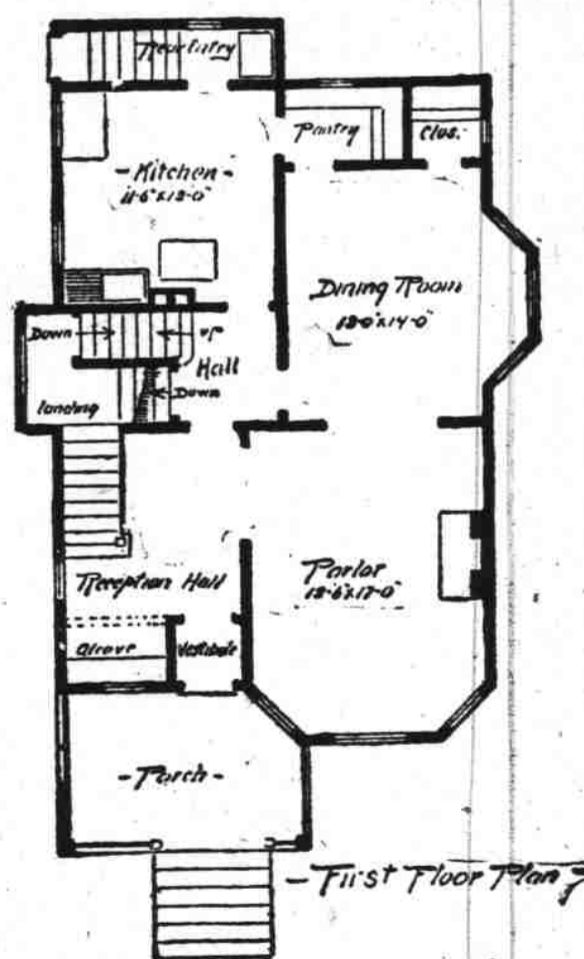
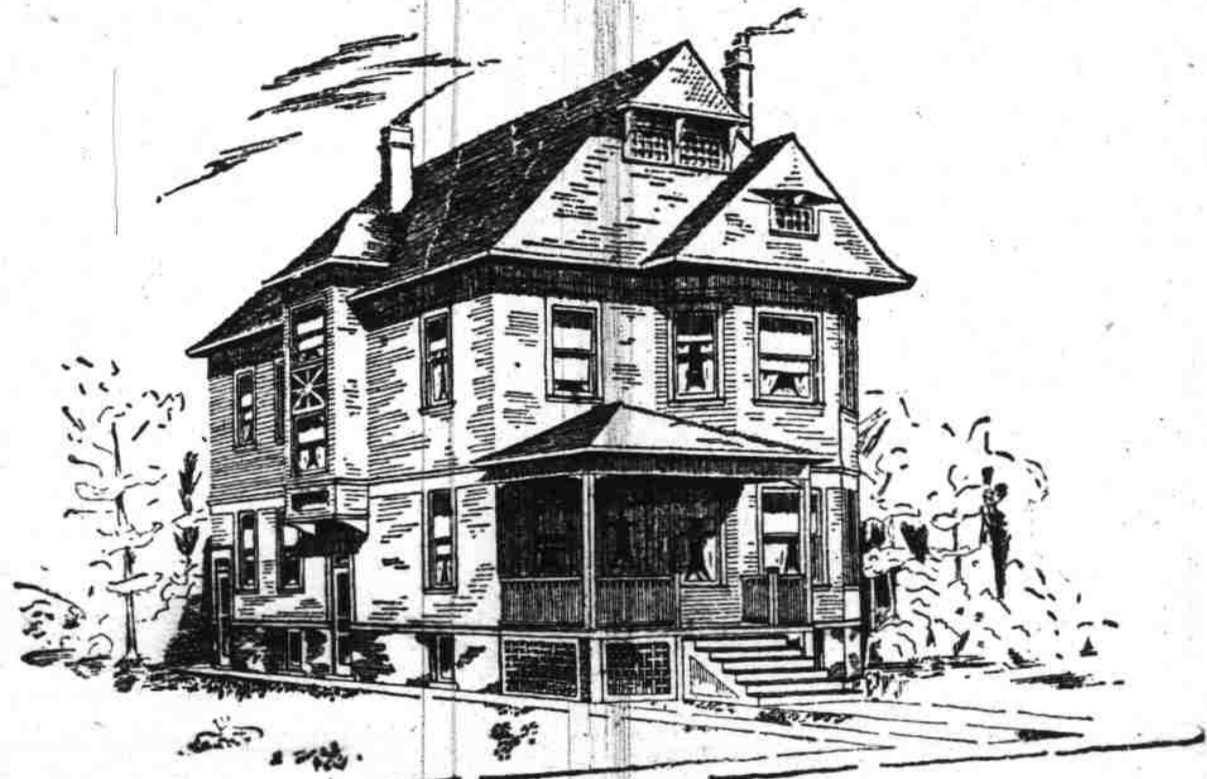
The report of the Committee on the Jamestown Exposition was given by Dr. R. H. Stancell, who introduced Mr. J. Lyman Babcock, Special Exposition Agent of the Norfolk and Southern Railway Company. Mr. Babcock offered free floor space, and stated that his company would assume entire responsibility and expense of demonstrating the exhibit, asking in return about twenty-five bags of the best peanuts to be had in the Peanut Belt, 2,000 yards of fine peanuts strung for festooning purposes, and \$5 from each Local Union.

Messrs. O. Goodridge, of Surry Co., Va., and W. H. Howell, of Northampton Co., N. C., and Dr. L. Lankford, of Norfolk, Va., briefly addressed the body, after which the Association adjourned to meet in the Agricultural Building of the Jamestown Exposition on September 26-27, 1907, on an invitation from the Exposition authorities.

## A Modern Eight Room House.

No. 3. of the Series of Pretty Rural Homes Designed for Progressive Farmer Readers by a Chicago Architect.

An eight-room house is a popular size, especially if four of the rooms are bed rooms. The house shown herewith is of this type and has many interesting points. The stairway, for instance, is a unique arrangement, being of the combination pattern—that is, the front and rear stairways lead up to a common landing and then continue to second story



as one stairway. In this manner a considerable amount of space is saved which can be devoted to other uses. The rear stairway continues from basement to attic and also serves for a stairway from basement to outdoors and for a side entrance. The rear steps to kitchen are enclosed and space is arranged in the enclosure for a refrigerator. The rooms are all of good size and plenty of closet room has been provided. The bath room is located on the second floor and over the kitchen, which is an economical arrangement owing to the fact that one set of plumbing pipes will answer for both kitchen and bath room.

The basement extends under the whole of house and attic is large. Front porch is extra large in size and of neat appearance. In designing this house I have endeavored to obtain as large a house as possible for the least amount of money. My estimate of the cost of this house, if finished in Georgia pine, and heated by a furnace, is \$2,200, and I will be pleased to furnish any additional information on request.

I have been requested to plan and design a barn suitable for use on a farm. Can any of the readers of this paper send me any information along this line? I will publish it and give credit where it belongs. Send me a rough sketch if you can of your ideal barn suitable for a farm, giving dimensions as near as you can.

GEO. S. KINGSLEY.  
36 LaSalle St., Chicago, Ill.

(Index to this issue will be found on page 9.)