



# THE PROGRESSIVE FARMER

EASTERN EDITION

A Farm and Home Weekly for  
The Carolinas, Virginia, Georgia, and Florida.

FOUNDED 1886, AT RALEIGH, N. C.

Reg'd U. S. Pat. Office

Vol. XXXII. No. 48.

SATURDAY, DECEMBER 1, 1917

\$1 a Year; 5c a Copy

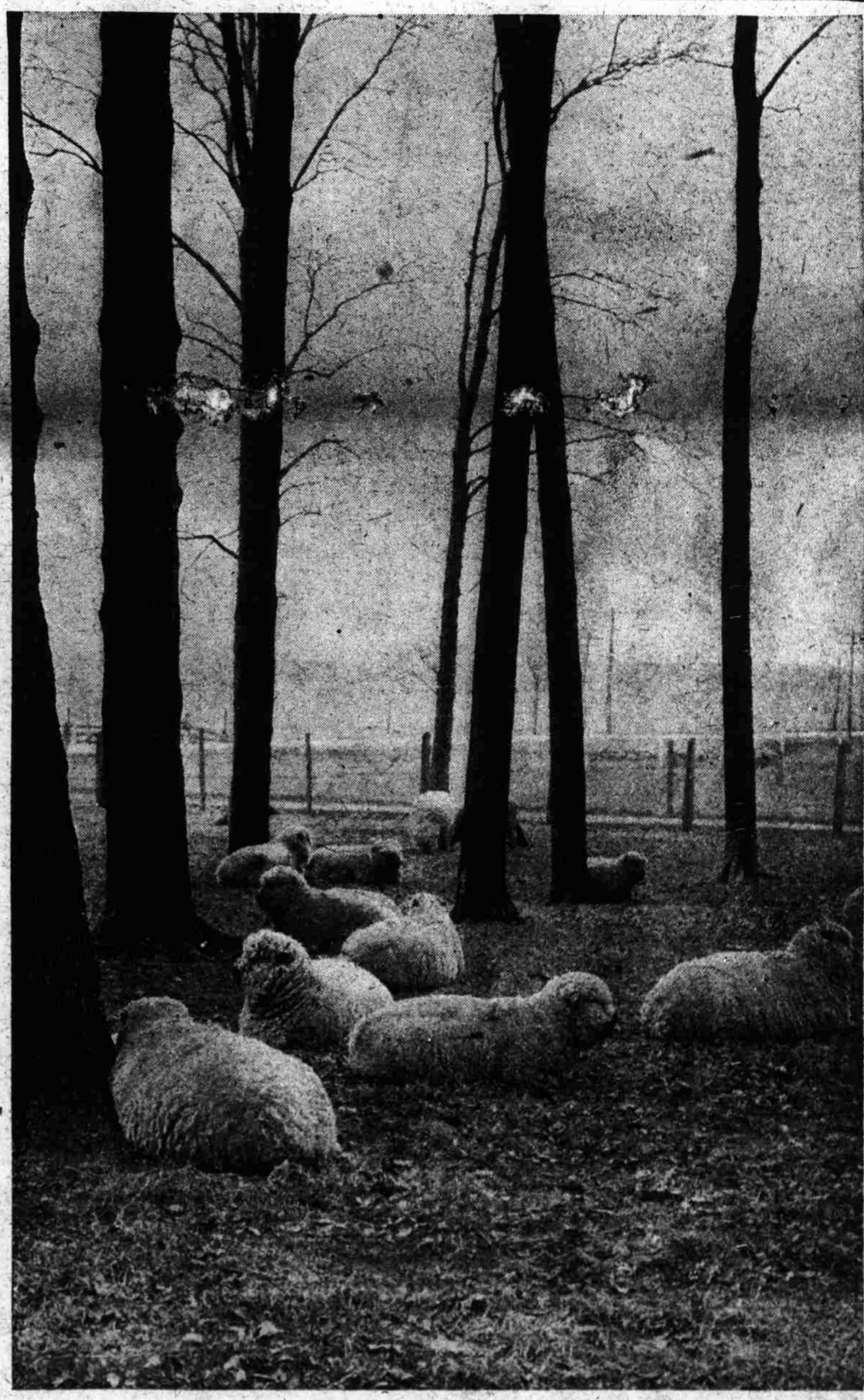
## Join in the "Spray Your Orchard" Campaign

IN MISSISSIPPI the extension forces of the A. & M. College have designated the week beginning December 9 as "Spray Your Orchard Week." The plan, backed by the college, the demonstration agents, all state officials from the Governor down, the press and the pulpit, is to arouse a state-wide interest in an orchard-spraying campaign—to create a knowledge of the need for spraying if good fruit is to be grown.

While initiated in Mississippi, there is no reason why a similar campaign should not be put under way in every state and county in the South. If it is too late for the extension forces as a whole to take up the work, let county demonstration agents and individual orchard owners get behind the plan and push it to a successful conclusion.

As to the value of spraying and the almost universal necessity for it if our orchards are to bear good fruit, there is no longer any question. "No spray, no pay" has become an axiom among successful fruit men everywhere. Nor is the fact that we happen to have only a small home orchard any reason why we should not spray. There are small spraying outfits suited to the small orchard, or a few neighbors can club together and buy a larger outfit.

Next week's Progressive Farmer will have articles on spraying by men who know, telling why we need to spray, when to spray and how to spray. Look for these articles, and in the meantime talk the matter over with your neighbors and your county demonstration agent and plan to have a "Spray Your Orchard Week" of your own. It will pay you.



A FLOCK OF FARM MONEY-MAKERS

### DON'T FAIL TO READ—

	Page
Feeding Value of Cob Meal . . . .	3
The Garden in December . . . .	4
Cultivation: Its Relation to Soil Fertility . . . . .	6
Farm Work for December . . . .	8
Has Your County an Official Cotton Grader? . . . . .	12
Hog-raising Both Patriotic and Profitable . . . . .	12
Lime Should Be Ordered Now . . . .	12
Regulate Ginning Charges by Law . .	12
December Suggestions for the Housewife . . . . .	14
Meeting National Farmers' Union .	18