

THE PROGRESSIVE FARMER



EASTERN EDITION

A Farm and Home Weekly for

The Carolinas, Virginia, Georgia, and Florida.

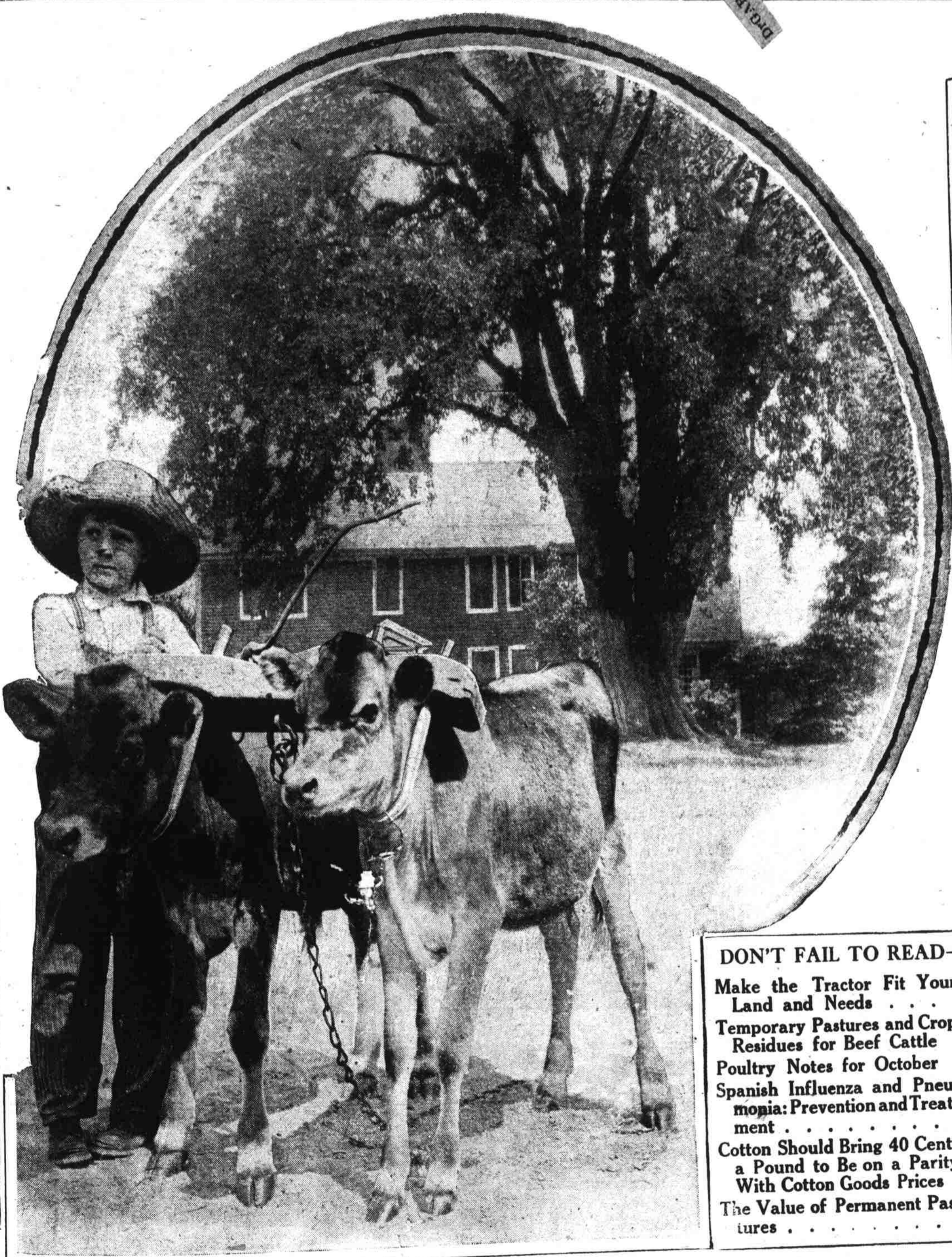
FOUNDED 1888 AT RALEIGH, N. C.

Reg'd U.S. Pat. Office

Vol. XXXIII. No. 42.

SATURDAY, OCTOBER 19, 1918

\$1 a Year; 5c a Copy



DON'T FAIL TO READ— Page

Make the Tractor Fit Your Land and Needs	6
Temporary Pastures and Crop Residues for Beef Cattle	7
Poultry Notes for October	12
Spanish Influenza and Pneumonia: Prevention and Treatment	15
Cotton Should Bring 40 Cents a Pound to Be on a Parity With Cotton Goods Prices	16
The Value of Permanent Pastures	24

YOUNG BEGINNERS

—Courtesy the De Laval Separator Co.