

TERRACING and DITCHING

when properly done, is the most profitable work a farmer can do. This is also true of Tile Drainage and Irrigation.

Agricultural Schools; County Demonstration agents and farmers in every state and practically every county in the United States, who know from experience, use and endorse the

BOSTROM IMPROVED



Shipping weight 15 lbs. Price \$20

with TELESCOPE, as meeting every requirement for all such work. They say no land owner can afford to be without one, as it pays for itself on one job and lasts a lifetime. It is absolutely simple to operate, accurate, durable and complete, including Level, Telescope with magnifying glasses which enable you to see the cross on Target a quarter of a mile away, man size Tripod, Graduated Leveling Rod, Target, Plumb Bob and full instructions.

Write today for description of Level and Telescope, and details of our positive and unqualified guarantee of satisfaction or money back, or better still, order direct from this advertisement, before the heavy rains set in, as we have material to make only a limited number this winter.

BOSTROM-BRADY MANUFACTURING Co.
58 Stonewall St., ATLANTA, GA.

1918 Cotton Crop Estimated at 11,700,000 Bales

THE Crop Reporting Board of the Bureau of Crop Estimates of the United States Department of Agriculture estimates, from the reports of the correspondents and agents of the Bureau, that the total production of cotton in the United States for the season 1918-19 will amount to 5,595,529,000 pounds (not including linters), equivalent to 11,700,000 bales of 500 pounds, gross weight, (478.3 pounds lint and 21.7 pounds bagging and ties estimated per 500-pound gross-weight bale).

Total production in 1917 was 11,302,375 bales (500 pounds gross); in 1916, 11,449,930 bales; in 1915, 11,191,820 bales; in 1914, 16,134,930 bales; in 1913, 14,156,486 bales; in 1912, 13,703,421 bales; and in 1911, 15,692,701 bales.

The average weight per running bale is estimated at 505.8 pounds gross, compared with 502.4 pounds in 1917 (as reported by the Bureau of the Census), 503.8 pounds in 1916, 505.6 pounds in 1915, and 505.5 pounds, the average of the preceding five years.

Reports of the Bureau of Crop Estimates do not include "linters," which are a product obtained at mills from the seed. The Census Bureau reports that 1,125,719 bales of 500 pounds gross were delinted from the 1917 crop, equal to 10 per cent as many as bales of lint cotton produced, which compare with 11.6 per cent, the ratio for the 1916 crop, 8.3 per cent for the 1915 crop, and 4.3 per cent, the average for the preceding five years.

The price per pound of lint cotton, to producers December 1, 1918, was 27.6 cents, compared with a December 1 price of 27.7 cents in 1917, 19.6 cents in 1916, 11.3 cents in 1915, 6.8 cents in 1914, 12.2 cents in 1913, 11.9 cents in 1912, and 8.8 cents in 1911.

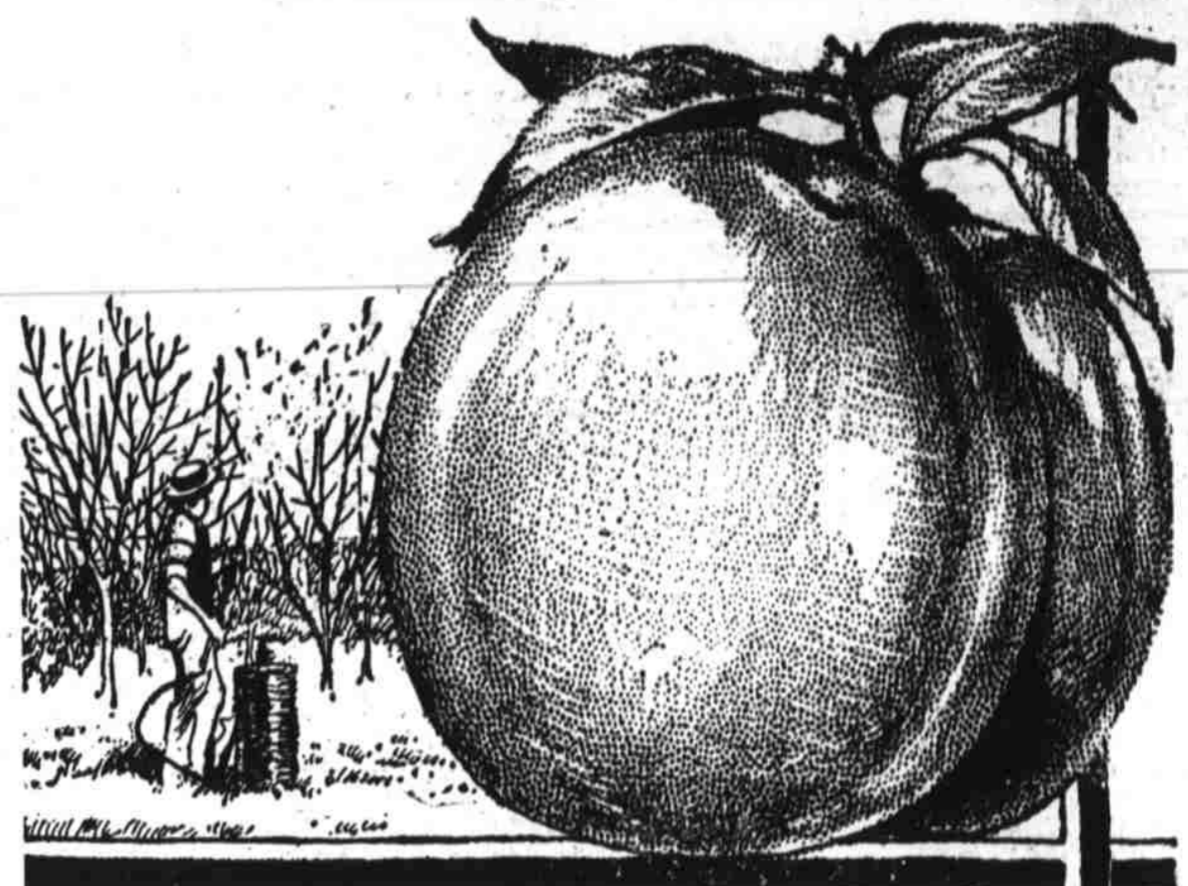
The estimated production, with comparisons, by states, follows:

Bales	Bales of 500 lbs. Gross Wt.			Price Per Pound Dec. 1	
	1918	1917 (Census)	5-Yr. Av. 1912-1916 (Census)	1918	1917
Va.	26,000	18,777	23,209	26.5	27.8
N. C.	870,000	617,989	788,585	26.4	27.7
S. C.	1,500,000	1,236,871	1,231,900	27.6	28.4
Ga.	2,100,000	1,882,311	2,108,159	27.5	28.8
Fla.	25,000	37,858	56,398	43.0	50.5
Ala.	820,000	517,890	1,228,675	27.0	28.0
Miss.	1,210,000	905,554	1,073,691	27.8	28.5
La.	525,000	638,729	410,724	27.5	26.7
Texas	2,580,000	3,125,478	4,074,095	28.2	26.7
Ark.	835,000	973,752	966,230	27.8	28.2
Tenn.	330,000	240,525	315,075	26.7	27.3
Mo.	70,000	60,821	63,079	27.0	27.5
Okl.	550,000	959,081	917,393	25.5	26.5
Calif.	100,000	57,826	30,612	30.0	28.0
Arizona	51,000	21,737	48.0
All other	8,000	5,666	9,732
U. S.	11,700,000	11,302,375	13,327,317	27.6	27.7

Production of Sea Island Cotton is estimated as follows in running bales: Florida, 18,000 bales; Georgia, 22,000 bales; South Carolina, 8,000 bales; total Sea Island, 48,000 bales. Last year 52,619 bales (running) were ginned.

Shepherd's Don'ts

- DON'T keep sheep on wet land.
- Don't feed moldy or spoiled hay, roots, silage or grain.
- Don't forget to keep salt and fresh water before the sheep.
- Don't neglect the sheep in winter. Keep them in good condition.
- Don't forget to tag the ewes before breeding and lambing time.
- Don't forget exercising the bred ewe.
- Don't let the lamb go too long without sucking.
- Don't neglect to feed the lamb grain as soon as it starts eating.
- Don't let parasites kill your lamb for lack of some fresh green pasture.
- Don't shear your ewes until warm weather comes.
- Don't tie your wool with anything but wool or paper twine.
- Don't hesitate to ask any questions of the county agent, or write to the Department of Agriculture at Washington, D. C.



Spray Trees During the Dormant Period with

B. T. S.

(PATENTED)

B. T. S. is an approved remedy for San Jose and other scales and insect pests, and is more easily handled and more economical than spray materials commonly used.

Lime Sulphur Solution carries a large amount of water—is very bulky and inconvenient to handle—there is also considerable waste on account of leakage—all this is avoided in B. T. S.

B. T. S. is a dry product which is easily soluble in water. Water costs you nothing. Make your own solution according to plain directions. A 100-lb. keg of B. T. S. is the full equivalent in all spraying operations of a 50-gallon barrel of Lime Sulphur Solution weighing 600 lbs.

This Company manufactures and sells Lime Sulphur Solution of the highest standard. But we especially recommend B. T. S. because you will find it in every way more satisfactory and economical.

Our Special Service

Have you a spraying problem? Do you want advice? Our Service Department is at your command. Our experts gladly answer all spraying inquiries. Put your problems up to us.

Orchard Brand

Spray Materials

A complete line of standardized Insecticides and Fungicides manufactured by the largest chemical company in America

General Chemical Co.

Insecticide Dept., 25 Broad St., New York

FREE

BROWN'S BARGAIN FENCE BOOK

JUST OUT—My New "direct from factory" Bargain Book on Fence and Gates. Prices way below competition. Values bigger than ever. Get it today. I Pay ALL Freight

Brown Fence lasts longest because built strongest, stiffest. All wires same size, heavily galvanized, 150 styles. Also Gates, Lawn Fence and Barb Wire at bargain prices.

Sample and book free, postpaid. Brown Fence & Wire Co., Dept. 287, Cleveland, O.

Make Money All Winter

Pull out stumps and get all the virgin land at work making money for you. It's the best land you have. Work can be done in winter and early spring. Stumps pulled at 3c to 5c each. An acre or more a day.

The Hercules Portable Puller

Is all steel with triple power. Equipped with solid steel bedplate and broad steel wheels. One man with team can handle it. Find out all about it by sending for the big book at once. Get the special low price proposition we are making.

Hercules Mfg. Co.
980 27th St., Centerville, Ia.

Ditching Made Easy

With this Simplex Ditcher-Terracer works in any soil, clay or gumbo. Digs V-shaped ditch down to 4 ft. Practically all steel. Reversible. Equal to 100 men. Pays for itself in a day.

Sent on 10 Days' Trial

Ditches, Terraces, Bulldozers, Levels Bumps, Fills Gullies, Grades Roads, Back Fills, Cleans out old ditches at low cost. Simplex Farm-Ditcher Co., Inc., Box 52 Owensboro, Ky.

Simplex
DITCHER-TERRACER

FURS will be higher than ever this season. We pay top prices for all kinds. Write today for FREE price list and shipping tags. We keep you posted.

MARX-ABRAMS FUR & WOOL CO., Inc.
Dept. F 816 W. Main St., Louisville, Ky.

The Key To The HARVEST

GOOD SEEDS

Write To-day

FREE OUR BIG SEED BOOK

The Jefferson-Rothkin Seed Co.
Box 105 Jefferson, Iowa.

DIXIE DRAG SAW

Start a profitable business cutting timber, firewood, etc., for yourself and others. The DIXIE pays for itself in a short time. Made of the best materials obtainable. Cuts 10 to 30 cords of firewood in 10 hours. A one-man outfit.

A 4 H.P. Portable Single Cylinder, 2 Cycle, Gasoline Rig, upon skids. Weight 280 lbs. Makes 125 strokes per minute. Cuts logs 7" to 72" diameter. Easily started and moved. Runs as smoothly as a Liberty Motor.

The Solution of the Present and Future Fuel and Labor Shortage

Economical of fuel and never grows weary. May be taken to the woods for cutting Log, fuel, etc. Equipped with friction clutch and when not required for sawing, Dixie Engine may be used for driving Pumps, Dynamo, Churn, Feed Cutters, etc.

Price with 6 or 7-foot Blade, \$200.00 F. O. B. Cleveland

THE PETER GERLACH CO., CLEVELAND, OHIO
Established 1854

150 EGG INCUBATOR CHICK BROODER

Both are made of Calif. Redwood. Incubator is covered with asbestos and galvanized iron; has triple walls, copper tank, nursery, egg tester, thermometer, ready to use. 30 DAYS' TRIAL—money back if not O. K. Write for FREE Catalog Now.

Ironclad Incubator Co., Box 85 Racine, Wis.

THAT'S RIGHT, UNCLE SAM.

Thrifty, healthy birds, well fed and free from lice; some neat, attractive letterheads; prompt and careful attention while making every effort to satisfy customers are the first things necessary. The next thing is an advertisement in

The Progressive Farmer.

When writing to advertisers, say: "I am writing you as an advertiser in The Progressive Farmer, which guarantees the reliability of advertising it carries."