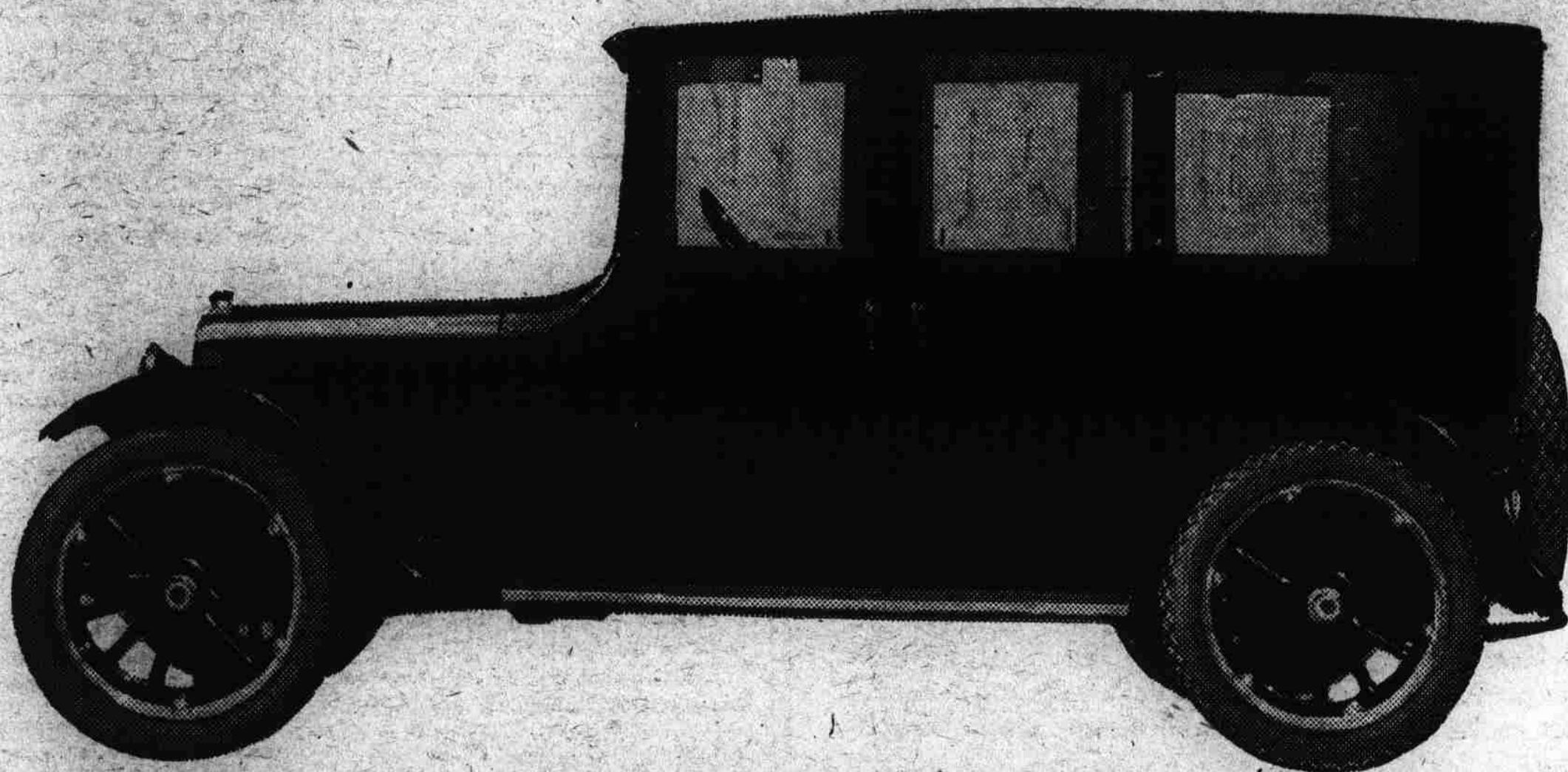




OAKLAND OWNERS REPORT RETURNS OF FROM
18 TO 25 MILES PER GALLON OF GASOLINE
AND FROM 8,000 TO 12,000 MILES ON TIRES



THIS OAKLAND SENSIBLE SIX FOUR DOOR SEDAN IS POWERED WITH THE FAMOUS 44-HORSEPOWER, OVERHEAD-VALVE OAKLAND ENGINE

OAKLAND SENSIBLE SIX

THE present remarkable value of the Oakland Sensible Six four door Sedan as an investment is evidenced in every field in which this competent automobile serves. Day after day, under the most strenuous conditions of service, it is not only delivering performance of the most satisfactory character, but is delivering it at extremely reasonable cost. This pronounced reliability of mechanical action, this economical discharge of every duty it may encounter, in the Oakland Sensible Six Sedan is joined with the unusual comfort that only complete equipment and appointment can give. The way the Oakland performs, the careful provision made in every detail of chassis and body construction for prolonged and capable service, makes the relative worth of this car unrivaled in the present automobile market.

MODEL 34-C: TOURING CAR, \$1165; ROADSTER, \$1165; FOUR DOOR SEDAN, \$1825; COUPE, \$1825. F. O. B. PONTIAC, MICH. ADDITIONAL FOR WIRE WHEEL EQUIPMENT, \$85

OAKLAND MOTOR CAR COMPANY
Pontiac, Michigan