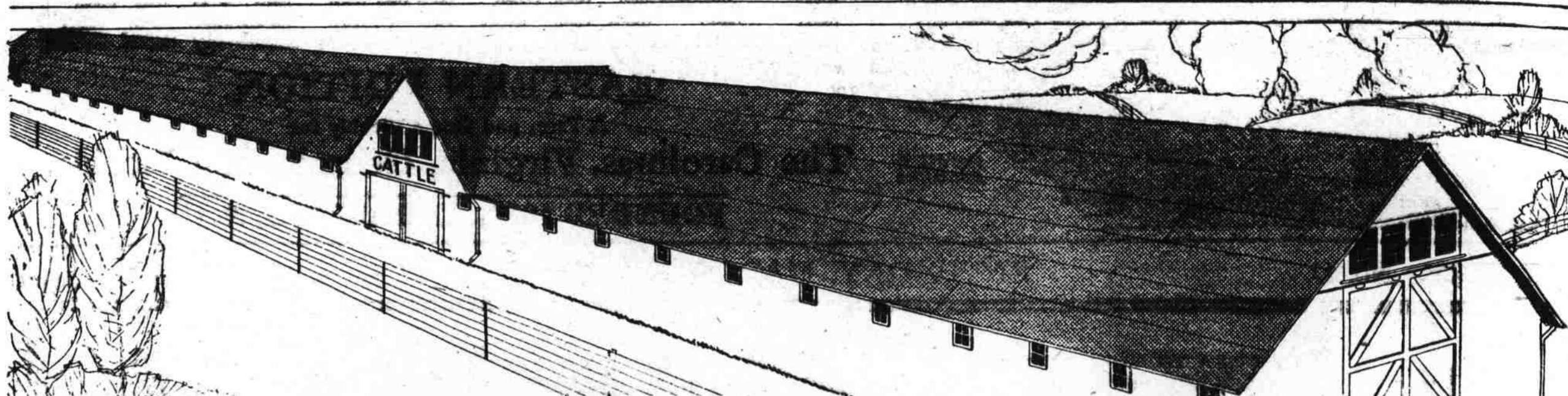


The area of roofs yearly covered with Certain-teed is greater than that covered by any other kind of prepared roofing. Certain-teed comes in rolls—both in the staple gray kind and the mineral-surfaced green or red, and also in green or red mineral-surfaced shingles for residences. Light, medium and heavy Certain-teed Roofings are guaranteed for five, ten or fifteen years respectively. The mineral-surfaced Certain-teed is guaranteed for ten years.



CERTAINTY OF QUALITY AND GUARANTEED SATISFACTION — CERTAIN-TEED

Buying Roofs by the Year

AFTER all, the only accurate way of figuring the cost of a roof is to divide its total cost by the number of years service that it gives.

With Certain-teed the total cost is low and the number of years is high.

A Certain-teed heavy grade roof—the kind generally used on barns—is guaranteed for fifteen years and as a rule lasts considerably longer.

Yet the cost per square is much lower than that of less modern forms of roofing, and the cost of laying is also low, because even unskilled labor can put it down very quickly.

Dividing the total cost of Certain-teed by the number of years service shows a most moderate cost per year.

Those who have compared this cost per year with that which they have usually paid, find that Certain-teed represents a really amazing economy.

Certain-teed Products Corporation
General Offices Saint Louis
Offices and Warehouses in Principal Cities

Certain-teed



PAINT - VARNISH - ROOFING & RELATED - BUILDING - PRODUCTS