

AJAX ROAD KING

Farm service puts tires to the test—for the car or light truck on the farm meets all sorts of road conditions.

The splendid records established by the Ajax Road King on the farm, are proof of its ability to meet the test.

It is a tire with stamina—with the all round strength for all round service. Its heavy tread is braced and re-inforced by Ajax "Shoulders of Strength." Its side walls are extra heavy so rats won't wear them down.

Buy the Ajax Road King — Ajax Cord — Ajax Tubes — Ajax H. Q. (High Quality) Tire Accessories from the nearest Ajax dealer.

AJAX RUBBER COMPANY, INC.
NEW YORK

Factories: Trenton, N. J. Branches in Leading Cities



A Farm With a Thousand Workers

Davis Poultry Farm, Henderson, N. C., Is Always a Busy Place

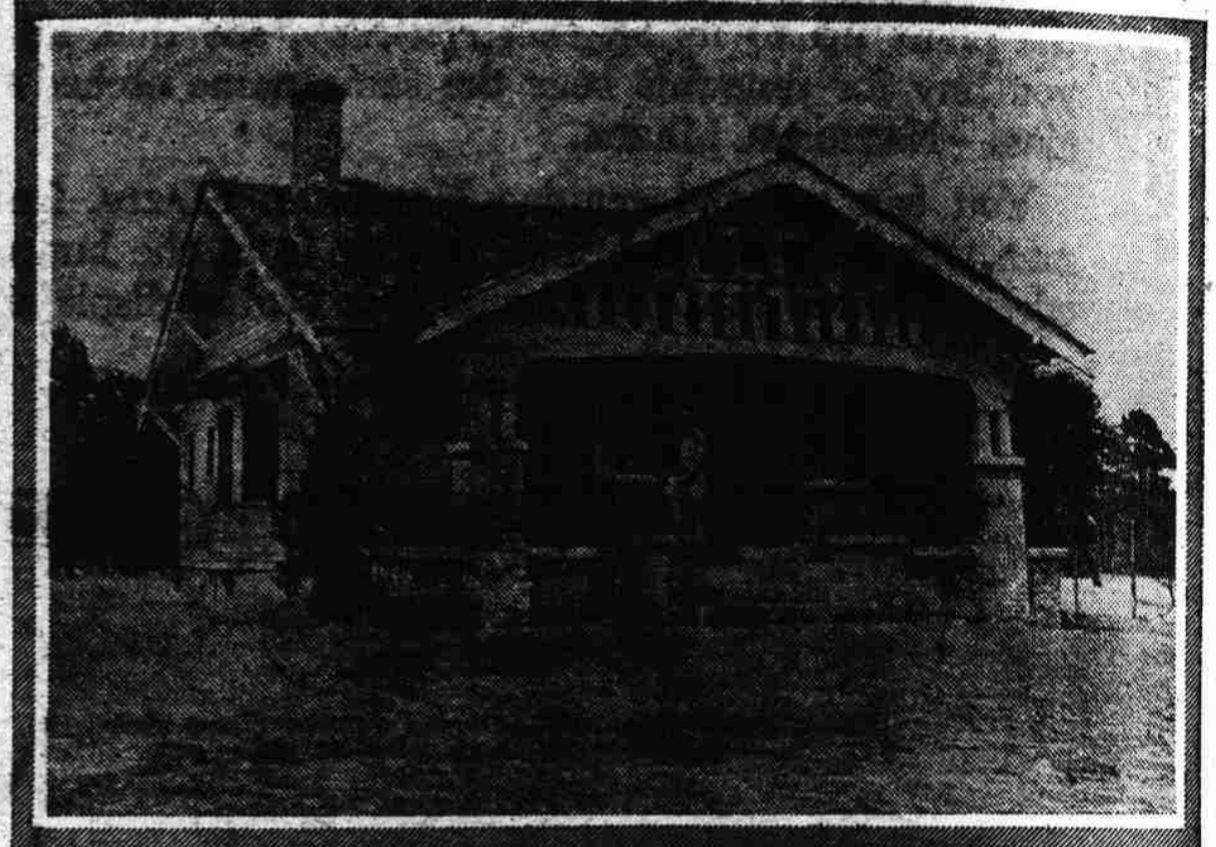
By P. T. HINES

WITH the present scarcity and indifference of farm labor, it does a person good to see a farm on which over a thousand workers are busily engaged—even though these workers are chickens instead of human beings!

Such a sight I saw the other day on Davis Poultry Farm, H. R. Davis, owner and manager, Henderson, N. C. Besides this great number of laying hens, there were baby chicks galore.

York. This is explained by the fact that Mr. Davis has a brother who makes frequent trips North and he assisted in working up a trade among his friends. However, the trade could have been worked up through New York newspapers, or the eggs could have been sold to hotels or individual Southern consumers.

How to Feed Little Chickens
IT WOULD have been impossible, of course, for this man to have made



MODERN NEW HOME ON THE DAVIS POULTRY FARM

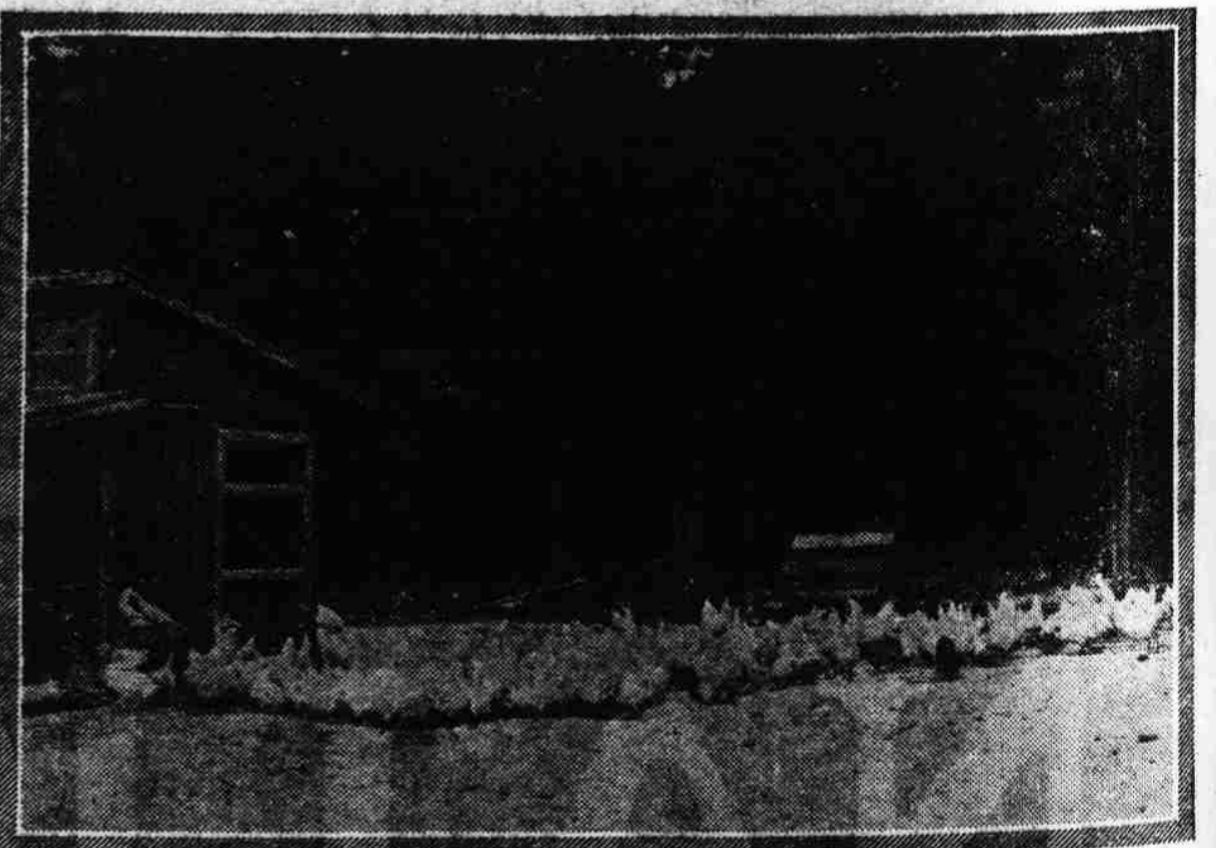
and about a thousand of these—a picture to delight the eyes of any preacher!—were nearing frying size.

In April, 1915, Mr. Davis started in the poultry business by buying a thousand baby chicks, raising 900 of them. From these he had a good bunch of layers the next fall and was able to put in his own incubators. With this start, the chickens have paid for the farm, a fine home with every modern convenience, and the farm buildings and equipment—all in five years. Besides there is a nice balance in the bank. The farm and home is valued at \$12,000.

The purpose of the farm is to pro-

duce such a wonderful success of the poultry business without some experience. For quite a while, he worked on a farm in Maryland where many baby chicks were raised. It was here that he learned this art. "Raising the little fellows is about the whole secret of the poultry business," was one of the remarks of Mr. Davis. He has also taken a correspondence course in poultry raising under a noted expert. By working with another poultryman, he also learned how to operate incubators before putting in the four 400-egg machines he now uses.

When the baby chicks are first taken from the incubator, they are fed



SOME OF THE WORKERS ON DAVIS POULTRY FARM

duce eggs for table use, though some breeding fowls are sold and a few eggs for hatching purposes. All of the eggs are marketed in New York City and are shipped direct to consumers. As Mr. Davis guarantees their freshness and quality, he has no trouble in obtaining 10 cents a dozen above market prices.

It seemed rather singular to find a North Carolina poultryman selling eggs only to individual buyers in New

all the sand they will eat in an hour. They are then given a feed of butter-milk, if this is on hand. The next feed used is composed of two parts of rolled oats to one part of wheat bran. This oat and bran feed is given the little chicks for three or four days, at which time they can be fed commercial grain chick feed.

At first, the biddies are fed often. They are usually given every two and (Concluded on page 26, column 4).

Ditches Terraces

Prevent crop failure. Reclaim abandoned land. Get my introductory offer on Model 29.

THE Martin

Write for FREE Book and Prices
All-steel—Adjustable—Reversible—No wheels, levers or cogs to get out of fix. Cuts new farm ditches or cleans old ones to 4 feet deep—grades roads—builds farm terraces, dykes and levees. Does work of 100 men. Every farm needs one. Send your name.

Owensboro Ditcher & Grader Co., Inc.
Box 531 Owensboro, Ky.

10 Days Free Trial

Ditch Wet Land With this Simplex

Cuts a mile of ditch a day, V-shaped, wide or narrow, to a depth of 4 feet. Builds terraces and levees, fills up old ditches and gullies. Sent you on **TEN DAYS' TRIAL**. Does the work of a hundred men. Lightest draft, all steel. Reversible.

Simplex Farm Ditcher Co., Inc.
Box 52 Owensboro, Kentucky

Eli HAY PRESS

40 styles and sizes for every purpose. Catalog free.

COLLINS FLOW COMPANY
2045 Hampshire St., Quincy, Ill.

Send in your renewal promptly